

3-435640-9 ✓ ACTIVE

[Alcoswitch](#) | [Alcoswitch DIP](#), [Alcoswitch DIP ADF](#)

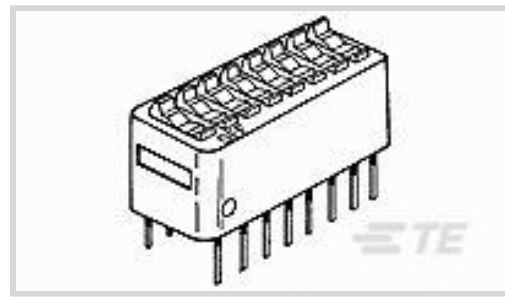
TE Internal #: 3-435640-9

DIP & SIP Switches, Switch, Gold, Blue Housing, Polyester GF,
Sealed, 8 Switch, -55 – 105 °C, DIP, Alcoswitch DIP

[View on TE.com >](#)



Relays, Contactors & Switches > Switches > DIP & SIP Switches



DIP & SIP Switch Product Type: **Switch**

DIP & SIP Switch Contact Mating Area Plating Material: **Gold**

DIP & SIP Switch Housing Color: **Blue**

DIP & SIP Switch Housing Material: **Polyester GF**

Auto-Insertable: **No**

Features

Product Type Features

DIP & SIP Switch Product Type	Switch
Sealed DIP & SIP Switch	Yes
DIP & SIP Switch Type	DIP
Actuator Style	Rocker (Top Actuated)

Configuration Features

Number of Positions	8
Number of Switches	8
Configuration (Pole-Throw)	Single Pole - Single Throw

Electrical Characteristics

DIP & SIP Switch Voltage Rating	40 VDC
---------------------------------	--------

Body Features

Seal Type	Standard
-----------	----------

Contact Features

Solder Tail Contact Plating	Gold over Nickel
	30 µin
DIP & SIP Switch Contact Mating Area Plating Material	Gold
Auto-Insertable	No
DIP & SIP Switch Contact Current Rating	1 A



Contact Base Material	Copper Alloy
-----------------------	--------------

Termination Features

Termination Post Length	3.56 mm[.14 in]
-------------------------	-----------------

Mechanical Attachment

Mounting Angle	Vertical
----------------	----------

DIP & SIP Switch Mounting Type	Through Hole
--------------------------------	--------------

Housing Features

Low Profile	No
-------------	----

DIP & SIP Switch Housing Color	Blue
--------------------------------	------

DIP & SIP Switch Housing Material	Polyester GF
-----------------------------------	--------------

DIP & SIP Switch Centerline	2.54 mm[.1 in]
-----------------------------	----------------

Dimensions

Height	8.64 mm[.34 in]
--------	-----------------

Length	22.3 mm[.88 in]
--------	-----------------

Usage Conditions

Operating Temperature Range	-55 – 105 °C
-----------------------------	--------------

Industry Standards

UL Flammability Rating	UL 94V-0
------------------------	----------

Packaging Features

Packaging Quantity	14
--------------------	----

Other

Comment	All switches are bottom sealed.
---------	---------------------------------

Product Compliance

[For compliance documentation, visit the product page on TE.com>](#)

EU RoHS Directive 2011/65/EU	Not Compliant
------------------------------	---------------

EU ELV Directive 2000/53/EC	Compliant with Exemptions
-----------------------------	---------------------------

China RoHS 2 Directive MIIT Order No 32, 2016	Restricted Materials Above Threshold
---	--------------------------------------

EU REACH Regulation (EC) No. 1907/2006	Current ECHA Candidate List: JUNE 2023 (235) Candidate List Declared Against: JUNE 2023 (235) SVHC > Threshold:
--	---



Pb (13% in Component Part)

Article Safe Usage Statements:

Do not eat, drink or smoke when using this product. Wash thoroughly after handling. Recycle if possible and dispose of the article by following all applicable governmental regulations relevant to your geographic location.

Halogen Content

Not Low Halogen - contains Br or Cl > 900 ppm.

Solder Process Capability

Wave solder capable to 265°C

Product Compliance Disclaimer

This information is provided based on reasonable inquiry of our suppliers and represents our current actual knowledge based on the information they provided. This information is subject to change. The part numbers that TE has identified as EU RoHS compliant have a maximum concentration of 0.1% by weight in homogenous materials for lead, hexavalent chromium, mercury, PBB, PBDE, DBP, BBP, DEHP, DIBP, and 0.01% for cadmium, or qualify for an exemption to these limits as defined in the Annexes of Directive 2011/65/EU (RoHS2). Finished electrical and electronic equipment products will be CE marked as required by Directive 2011/65/EU. Components may not be CE marked. Additionally, the part numbers that TE has identified as EU ELV compliant have a maximum concentration of 0.1% by weight in homogenous materials for lead, hexavalent chromium, and mercury, and 0.01% for cadmium, or qualify for an exemption to these limits as defined in the Annexes of Directive 2000/53/EC (ELV). Regarding the REACH Regulation, the information TE provides on SVHC in articles for this part number is based on the latest European Chemicals Agency (ECHA) 'Guidance on requirements for substances in articles' posted at this URL: <https://echa.europa.eu/guidance-documents/guidance-on-reach>

Compatible Parts



TE Part # 2-5435668-8
DIP SW 8 POSN W/TAPE AU



TE Part # 2-5435668-5
DIP SW 6 POSN W/TAPE AU



TE Part # 435668-7
LO PROFILE DIP SW 8P AU

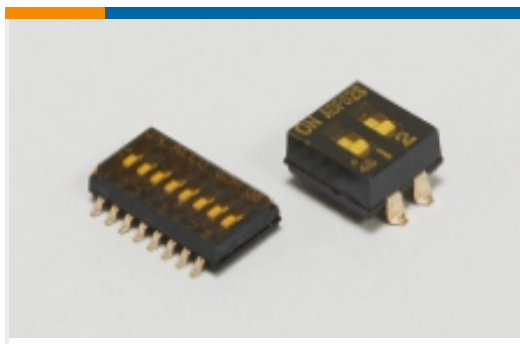


TE Part # 3-5435668-4
DIP SW 4 POSN W/TAPE AU



TE Part # 2-435668-5
DIP SW 6 POSN W/TAPE AU

Also in the Series | Alcoswitch DIP

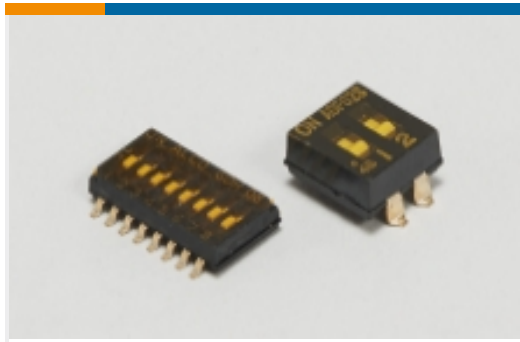


DIP & SIP Switches(240)



Rotary Switches(16)

Also in the Series | Alcoswitch DIP ADF



DIP & SIP Switches(74)

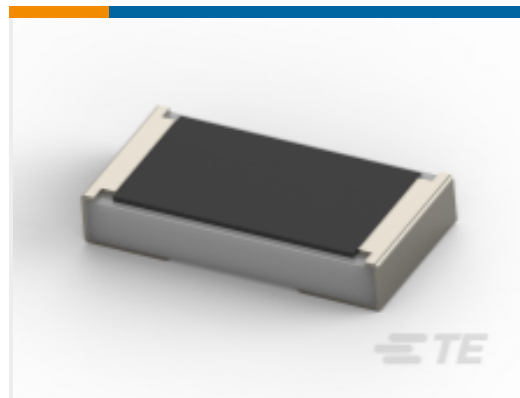
Customers Also Bought



TE Part #DTF15-12PA
HDR, 12P, GRY, ST, SN/NI/CU, A



TE Part #2-640454-0
20P MTA100 HDR ASSY SQ STR POL



TE Part #9-2176231-8
SMD Power Resistor: 3 Watt, 1% Tol



TE Part #MS580305BA01-00
MS5803-05BA 5BAR WHITE GEL TUBE



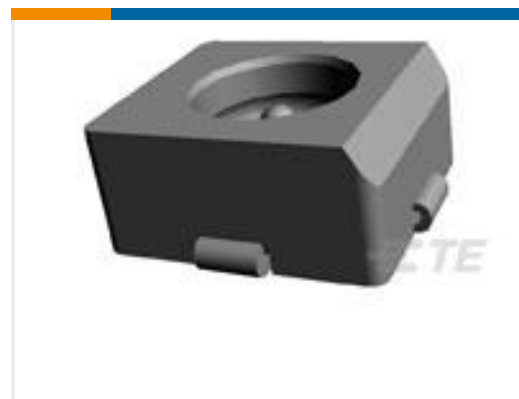
TE Part #1393194-9
T77S1D10-12



TE Part #6-1437657-9
8PCV-03-006=#8 TRIBARRIER



TE Part #1-1617150-0
JMGSCD-26MW = M39016/42-052M



TE Part #1055687-1
2367 0000 54, VERT PLUG



TE Part #2-1393237-8
RT424012F



Documents

CAD Files

Customer View Model

[ENG_CVM_3-435640-9_AM.3d_igs.zip](#)

English

Customer View Model

[ENG_CVM_3-435640-9_AM.3d_stp.zip](#)

English

Customer View Model

[ENG_CVM_3-435640-9_AM.2d_dxf.zip](#)

English

[3D PDF](#)

English

[3D PDF](#)

3D

Customer View Model

[ENG_CVM_CVM_3-435640-9_CL.2d_dxf.zip](#)

English

Customer View Model

[ENG_CVM_CVM_3-435640-9_CL.3d_igs.zip](#)

English

Customer View Model

[ENG_CVM_CVM_3-435640-9_CL.3d_stp.zip](#)

English

By downloading the CAD file I accept and agree to the [Terms and Conditions](#) of use.

Product Specifications

[Application Specification](#)

English

Product Environmental Compliance

[MD_3-435640-9_03152018955_dmtec](#)

English

[MD_3-435640-9_03152018955_dmtec](#)

English

Instruction Sheets

[Instruction Sheet \(U.S.\)](#)

English