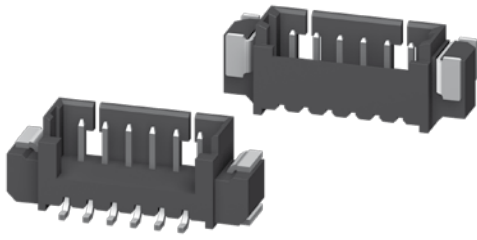


Pin Header SMD Shrouded 1,25 mm

Series **427**



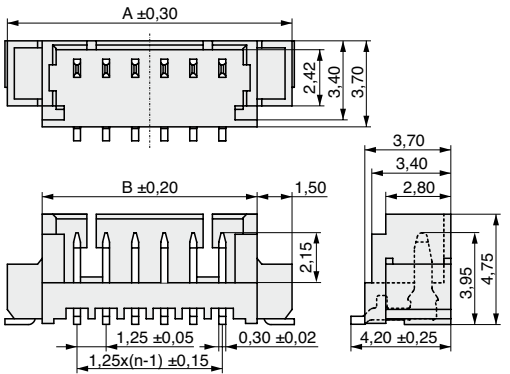
Rated current	1,0 A
Rated voltage	100 V _{RMS} / V _{DC}
Withstand voltage	300 V _{RMS} for one minute
Material contact	Copper alloy
Material insulator	High temp. thermoplast UL94V-0
Operating temperature	-40°C to +105°C
Max. processing temper.	260°C for 10 seconds

pitch	1,25
termination	
max. pincount	015

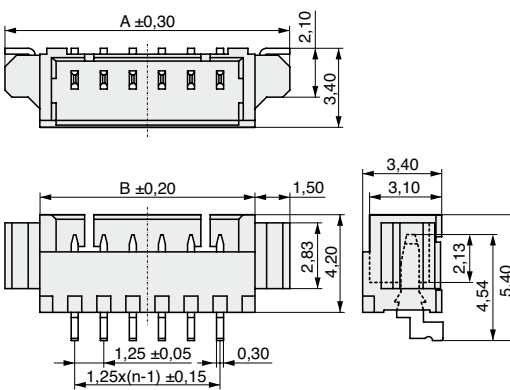
All dimensions in mm.

Product group **3**

Variation



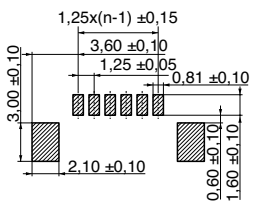
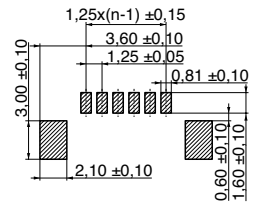
1



2

Plating: T = Sn
 Packaging: S = Standard, R = Reel
 Cap: 0 = Without cap, 1 = With cap (only for variation 1)

PCB Layout



no. of contacts	see figure left	see figure left	available in variation	
n	A	B		
002	7,25	4,25	1	2
003	8,50	5,50	1	2
004	9,75	6,75	1	2
005	11,00	8,00	1	2
006	12,25	9,25	1	2
007	13,50	10,50	1	2
008	14,75	11,75	1	2
009	16,00	13,00	1	2
010	17,25	14,25	1	2
011	18,50	15,50	1	2
012	19,75	16,75	1	2
013	21,00	18,00	1	2
014	22,25	19,25	1	2
015	23,50	20,50	1	2

Variation (1,2)

No. of contacts

Plating contact

Packaging (S,R)

Cap (0,1)



Order code: **427-2-222-0-T-K22**

Mating series	425																		
see page	6-3																		