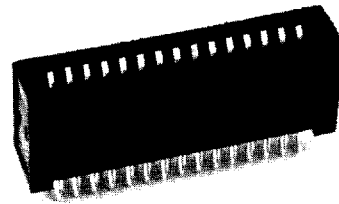


**.100" CENTER-TO-CENTER  
.200" ROW-TO-ROW  
PRESS-FIT CARDEDGE  
WITH STANDOFFS**



**PHYSICAL PROPERTIES**

INSULATION RESISTANCE: 5000 megohms minimum.  
 CONTACT RETENTION INTO PCB: 5 lbs.  
 INSERTION/WITHDRAWAL FORCE: 8 oz./2 oz. average contact pair using .0620 steel blade.  
 INSULATOR BODY: Glass filled thermoplastic, UL rating 94V-0  
 COLOR: Black  
 CONTACTS: High strength copper alloy.  
 CONTACT PLATING: 50 microinches nickel underplate with 30 microinches gold in the mating area, tin/lead on tails, 100 microinches minimum

**ELECTRICAL PROPERTIES**

OPERATING VOLTAGE: 600 VDC (sea level)  
 CURRENT RATING: 3 Amperes  
 INITIAL CONTACT RESISTANCE: 10 milliohms

**ENVIRONMENTAL PROPERTIES**

OPERATING TEMPERATURE: -55°C to +125°C  
 TEMPERATURE CYCLING: MIL-STD-202 method 107  
 VIBRATION: MIL-STD-202, method 204

**APPLICATION TOOLING**

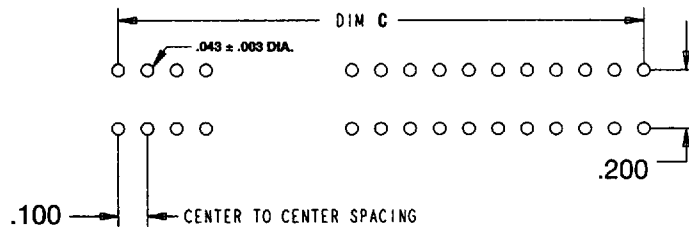
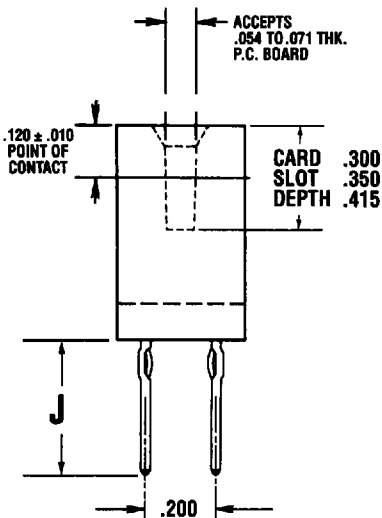
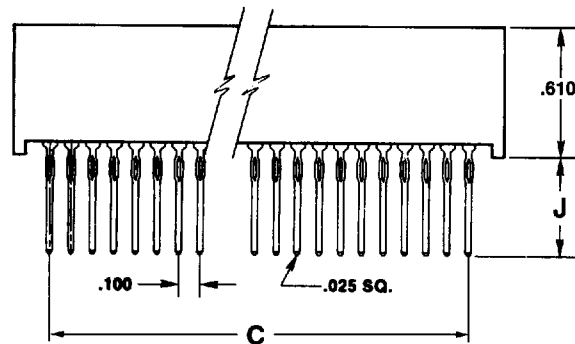
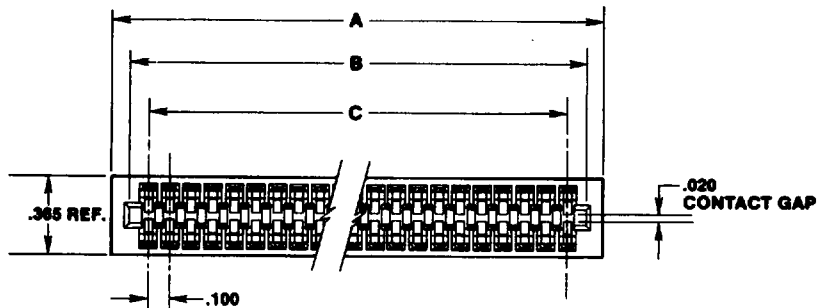
INSERTION TOOL: Cat. # 98236, see page 420

**ACCESSORIES**

POLARIZATION KEY: Cat. # 98014-00, see page 372

**DAUGHTER CARD**

See page 373 for layout



Open ends and open/closed ends are available. Consult factory.

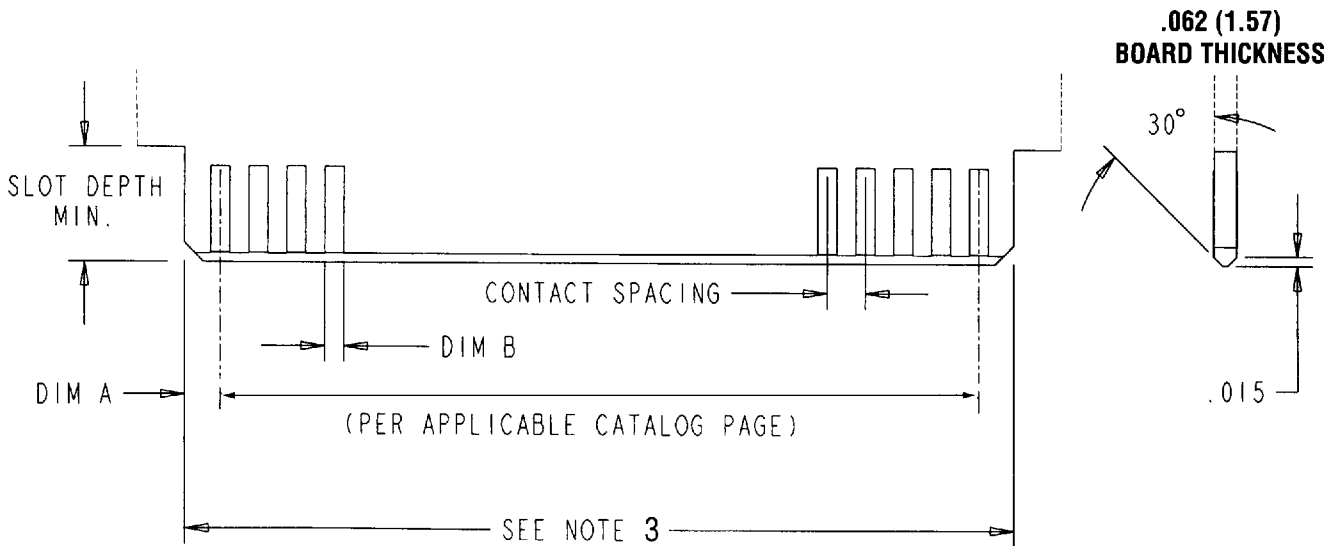
## ORDERING INFORMATION -

.100 CENTER-TO-CENTER/.200 ROW-TO-ROW

| # OF DUAL<br>READOUT POS.         | CATALOG NUMBER       |                      |                      | DIMENSIONS |       |       |
|-----------------------------------|----------------------|----------------------|----------------------|------------|-------|-------|
|                                   | .300 CARD SLOT DEPTH | .350 CARD SLOT DEPTH | .415 CARD SLOT DEPTH | A          | B     | C     |
| <b>TAIL LENGTH .670 (DIM "J")</b> |                      |                      |                      |            |       |       |
| 6                                 | C8D06PF29012         | C8D06PF29132         | C8D06PF29042         | 0.860      | 0.700 | 0.500 |
| 10                                | C8D10PF29012         | C8D10PF29132         | C8D10PF29042         | 1.260      | 1.100 | 0.900 |
| 12                                | C8D12PF29012         | C8D12PF29132         | C8D12PF29042         | 1.460      | 1.300 | 1.100 |
| 15                                | C8D15PF29012         | C8D15PF29132         | C8D15PF29042         | 1.760      | 1.600 | 1.400 |
| 20                                | C8D20PF29012         | C8D20PF29132         | C8D20PF29042         | 2.260      | 2.100 | 1.900 |
| 22                                | C8D22PF29012         | C8D22PF29132         | C8D22PF29042         | 2.460      | 2.300 | 2.100 |
| 25                                | C8D25PF29012         | C8D25PF29132         | C8D25PF29042         | 2.760      | 2.600 | 2.400 |
| 28                                | C8D28PF29012         | C8D28PF29132         | C8D28PF29042         | 3.060      | 2.900 | 2.700 |
| 30                                | C8D30PF29012         | C8D30PF29132         | C8D30PF29042         | 3.260      | 3.100 | 2.900 |
| 31                                | C8D31PF29012         | C8D31PF29132         | C8D31PF29042         | 3.360      | 3.200 | 3.000 |
| 35                                | C8D35PF29012         | C8D35PF29132         | C8D35PF29042         | 3.760      | 3.600 | 3.400 |
| 36                                | C8D36PF29012         | C8D36PF29132         | C8D36PF29042         | 3.860      | 3.700 | 3.500 |
| 40                                | C8D40PF29012         | C8D40PF29132         | C8D40PF29042         | 4.260      | 4.100 | 3.900 |
| 43                                | C8D43PF29012         | C8D43PF29132         | C8D43PF29042         | 4.560      | 4.400 | 4.200 |
| 50                                | C8D50PF29012         | C8D50PF29132         | C8D50PF29042         | 5.260      | 5.100 | 4.900 |
| 60                                | C8D60PF29012         | C8D60PF29132         | C8D60PF29042         | 6.260      | 6.100 | 5.900 |
| <b>TAIL LENGTH .180 (DIM "J")</b> |                      |                      |                      |            |       |       |
| 6                                 | C8D06PF29013         | C8D06PF29133         | C8D06PF29043         | 0.860      | 0.700 | 0.500 |
| 10                                | C8D10PF29013         | C8D10PF29133         | C8D10PF29043         | 1.260      | 1.100 | 0.900 |
| 12                                | C8D12PF29013         | C8D12PF29133         | C8D12PF29043         | 1.460      | 1.300 | 1.100 |
| 15                                | C8D15PF29013         | C8D15PF29133         | C8D15PF29043         | 1.760      | 1.600 | 1.400 |
| 20                                | C8D20PF29013         | C8D20PF29133         | C8D20PF29043         | 2.260      | 2.100 | 1.900 |
| 22                                | C8D22PF29013         | C8D22PF29133         | C8D22PF29043         | 2.460      | 2.300 | 2.100 |
| 25                                | C8D25PF29013         | C8D25PF29133         | C8D25PF29043         | 2.760      | 2.600 | 2.400 |
| 28                                | C8D28PF29013         | C8D28PF29133         | C8D28PF29043         | 3.060      | 2.900 | 2.700 |
| 30                                | C8D30PF29013         | C8D30PF29133         | C8D30PF29043         | 3.260      | 3.100 | 2.900 |
| 31                                | C8D31PF29013         | C8D31PF29133         | C8D31PF29043         | 3.360      | 3.200 | 3.000 |
| 35                                | C8D35PF29013         | C8D35PF29133         | C8D35PF29043         | 3.760      | 3.600 | 3.400 |
| 36                                | C8D36PF29013         | C8D36PF29133         | C8D36PF29043         | 3.860      | 3.700 | 3.500 |
| 40                                | C8D40PF29013         | C8D40PF29133         | C8D40PF29043         | 4.260      | 4.100 | 3.900 |
| 43                                | C8D43PF29013         | C8D43PF29133         | C8D43PF29043         | 4.560      | 4.400 | 4.200 |
| 50                                | C8D50PF29013         | C8D50PF29133         | C8D50PF29043         | 5.260      | 5.100 | 4.900 |
| 60                                | C8D60PF29013         | C8D60PF29133         | C8D60PF29043         | 6.260      | 6.100 | 5.900 |

# CARDEDGE CONNECTORS RECOMMENDED DAUGHTER CARD LAYOUT

PER MIL-C-21097E



**Daughter Card**

| CONTACT SPACING<br>NON-ACCUM. | DIM A<br>±.005 (.13) | DIM B       |
|-------------------------------|----------------------|-------------|
| .100 (2.54)                   | .093 (2.36)          | .052 (1.32) |
| .125 (3.18)                   | .093 (2.36)          | .052 (1.32) |
| .156 (3.96)                   | .105* (2.67)         | .094 (2.39) |

\* Except MIL-C-21097E 8-4 which is .070 (1.78)

**NOTES:**

1. Dimensions are in inches
2. Unless otherwise specified, tolerance is ±.005 (0.13 mm) for three place decimals.
3. Number of contact fingers shall be the same as the corresponding printed wiring connector.