

Receptacle Assemblies for Rack Mounting with Posted Contacts (Wrap-Type)

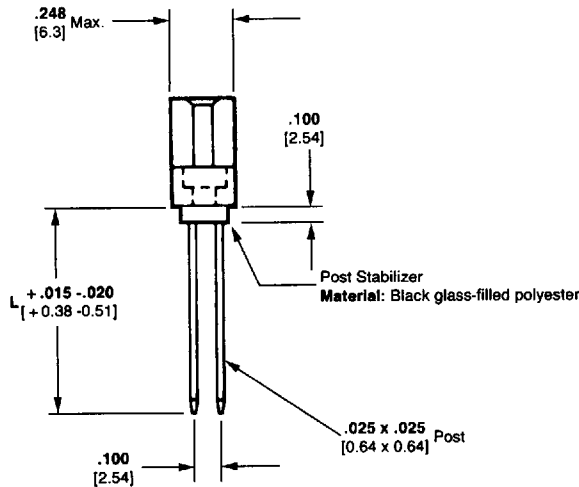
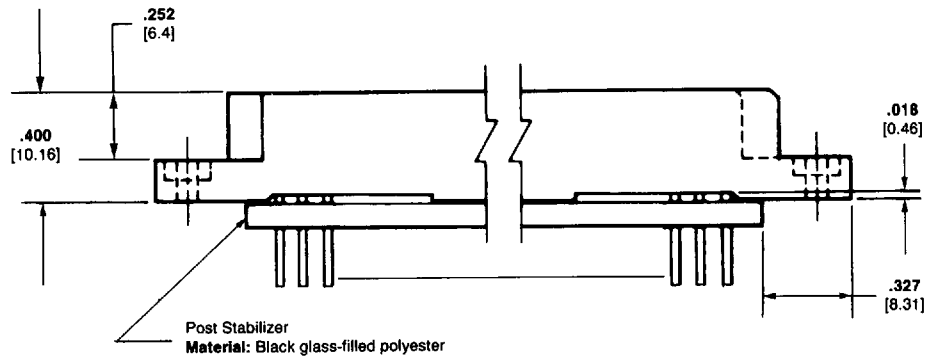
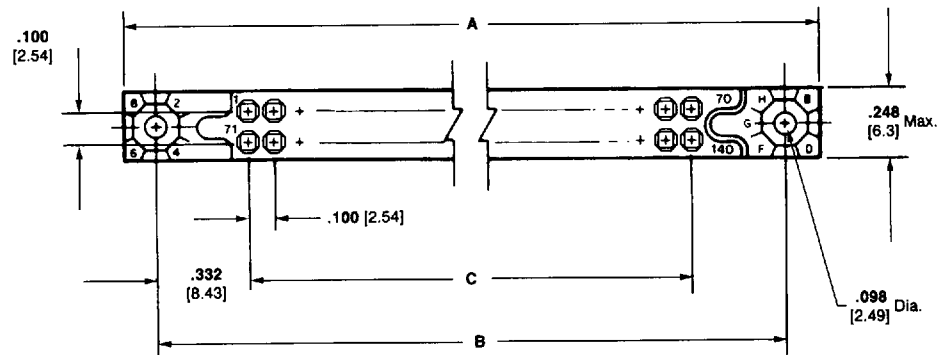
Related Product Data:

Mates with—Pin Headers Assemblies, pages 15 thru 19

External Keying—page 42

Post Wrapping Information—page 10

Recommended Pc Board Layout—page 36



Post Length	No. of Terminals per Post		
	1 High	2 High	3 High
L	.405 10.29	.565 14.35	.725 18.42

Post Wrapping Information

Maximum wire size for wrapping a posted box terminal is 30 AWG [0.05mm²] (maximum insulated wire diameter, .019 [0.49mm]).

The following data can be used to determine bit and sleeve size:

- Maximum Terminal Diagonal: .034 [0.87]
- Minimum Terminal Diagonal: .031 [0.78]
- Maximum Effective Radius: .067 [1.71]

Recommended Sleeve:

No. 507100¹

Recommended Bits:

No. 511208¹

No. 507063¹

¹Available from Gardner-Denver Co., Grand Haven, Michigan.

Receptacle Assemblies for Rack Mounting with Posted Contacts (Wrap-Type) (Continued)

Commercial Receptacle Assemblies:

Housing Material—In accordance with MIL-C-55302

Contact Material and Finish—Beryllium copper per QQ-C-533 plated .000030 [0.00076] gold in the contact area, .000100 [0.00254] tin-lead on the tails over .000030 [0.00076] nickel on the entire contact.

No. of Pos.	Dimensions			No. of Terminations Per Post		
	A	B	C	1 High AMP Part No.	2 High AMP Part No.	3 High AMP Part No.
140	7.855 199.52	7.565 192.15	6.900 175.26	—	—	—
134	7.555 191.50	7.265 184.53	6.600 167.64	—	—	—
130	7.355 186.82	7.065 179.45	6.400 162.56	—	—	—
120	6.855 174.12	6.565 166.75	5.900 149.86	—	1-531837-0	1-531838-0
110	6.355 161.42	6.065 154.05	5.400 137.16	—	—	531838-9
100	5.855 148.72	5.565 141.35	4.900 124.46	—	531837-8	531838-8
90	5.355 136.02	5.065 128.65	4.400 111.76	531836-7	—	—
80	4.855 123.32	4.565 115.95	3.900 99.06	—	531837-6	531838-6
70	4.355 110.62	4.065 103.25	3.400 86.36	—	—	531838-5
60	3.855 97.92	3.565 90.55	2.900 73.66	—	—	531838-4
50	3.355 85.22	3.065 77.85	2.400 60.96	531836-3	—	531838-3
40	2.855 72.52	2.565 65.15	1.900 48.26	531836-2	531837-2	—
30	2.355 59.82	2.065 52.45	1.400 35.56	—	—	531838-1

Military Receptacle Assemblies:

Housing Material—In accordance with MIL-C-55302

Contact Material and Finish—Beryllium copper per QQ-C-533

No. of Pos.	Dimensions			No. of Terminations Per Post					
	A	B	C	1 High		2 High		3 High	
				MIL-Part No.	AMP Part No.	MIL-Part No.	AMP Part No.	MIL-Part No.	AMP Part No.
140	7.855 199.52	7.565 192.15	6.900 175.26	M55302/27-213	—	M55302/27-209	1-530777-3	M55302/27-205	1-530763-3
134	7.555 191.50	7.265 184.53	6.600 167.64	M55302/27-212	1-530778-2	M55302/27-208	1-530777-2	M55302/27-204	1-530763-2
130	7.355 186.82	7.065 179.45	6.400 162.56	M55302/27-211	1-530778-1	M55302/27-207	1-530777-1	M55302/27-203	1-530763-1
120	6.855 174.12	6.565 166.75	5.900 149.86	M55302/27-210	1-530778-0	M55302/27-206	1-530777-0	M55302/27-202	1-530763-0
110	6.355 161.42	6.065 154.05	5.400 137.16	M55302/27-144	530778-9	M55302/27-135	530777-9	M55302/27-126	530763-9
100	5.855 148.72	5.565 141.35	4.900 124.46	M55302/27-143	530778-8	M55302/27-134	530777-8	M55302/27-125	530763-8
90	5.355 136.02	5.065 128.65	4.400 111.76	M55302/27-142	530778-7	M55302/27-133	530777-7	M55302/27-124	530763-7
80	4.855 123.32	4.565 115.95	3.900 99.06	M55302/27-141	530778-6	M55302/27-132	530777-6	M55302/27-123	530763-6
70	4.355 110.62	4.065 103.25	3.400 86.36	M55302/27-140	530778-5	M55302/27-131	530777-5	M55302/27-122	530763-5
60	3.855 97.92	3.565 90.55	2.900 73.66	M55302/27-139	530778-4	M55302/27-130	530777-4	M55302/27-121	530763-4
50	3.355 85.22	3.065 77.85	2.400 60.96	M55302/27-138	530778-3	M55302/27-129	530777-3	M55302/27-120	530763-3
40	2.855 72.52	2.565 65.15	1.900 48.26	M55302/27-137	530778-2	M55302/27-128	530777-2	M55302/27-119	530763-2
30	2.355 59.82	2.065 52.45	1.400 35.56	M55302/27-136	530778-1	M55302/27-127	530777-1	M55302/27-118	530763-1

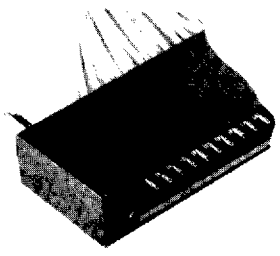
.100 [2.54] Centerline
Series Connectors



Pin Housing and Assemblies for Crimp Contacts

.100 [2.54] Centerline Series Connectors

Housing Assembly (includes turnable jackscrews)



Housing Material—In accordance with MIL-C-55302

Jackscrew Material—Passivated stainless steel

Related Product Data:

Mates with—Receptacle assemblies, pages 8 thru 14 and receptacle housings, pages 20 and 21

Crimp Type Pin Contact:

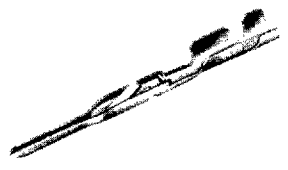
Material—Brass

Finish—.000050 [0.00127] gold over .000050 [0.00127] nickel

Wire Range—26-22 AWG [0.12-0.4mm²]

Ins. Dia. Range—.036-.054 [0.91-1.37]

Extraction Tool—Part No. 91156-1

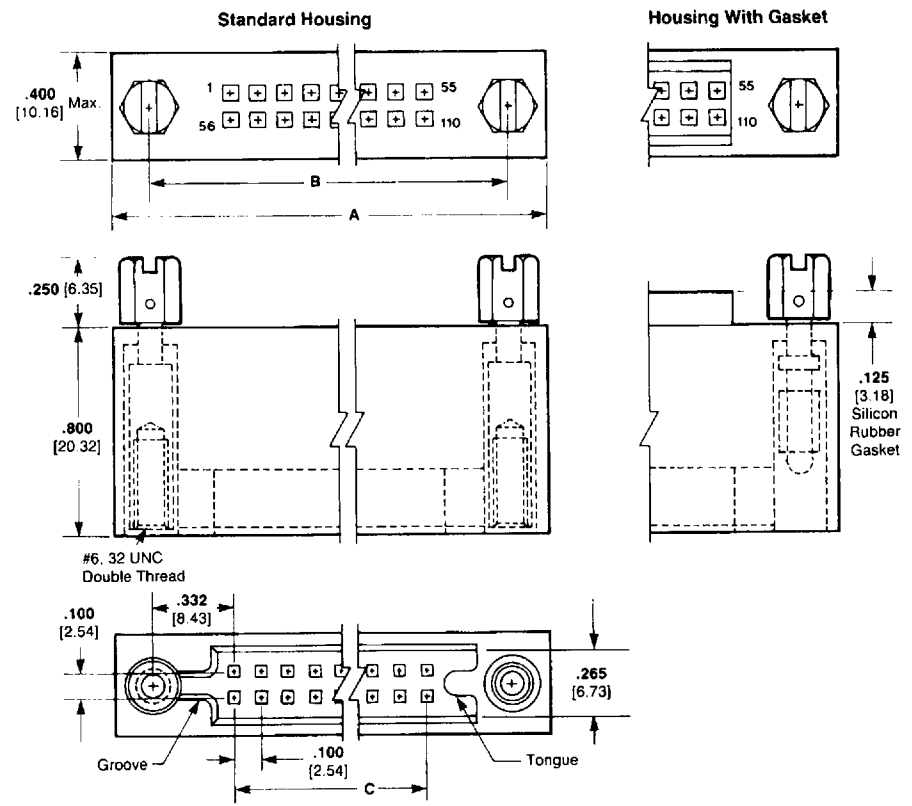


Loose Piece
Military Part No. M55302/113-05
AMP Part No. 530750-5

Strip Form
Military Part No. M55302/113-05
AMP Part No. 530750-4

Tooling:

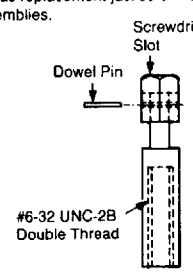
Hand Tool No. 90346-1 is used to apply the loose piece contacts (Hand tool instruction sheet 408-7820). For the application of strip contacts use the AMP-O-LECTRIC Machine with the applicator No. 466625-3. Other automated machines are available, consult AMP Incorporated for specifications.



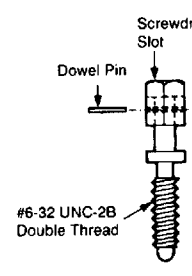
Turnable Jackscrews

Material: Passivated stainless steel

Note: To be used as replacement jackscrew for the pin housing assemblies shown above. They are not compatible with any other pin header assemblies.



Female
Military Part No. M55302/113-11
AMP Part No. 530754-2

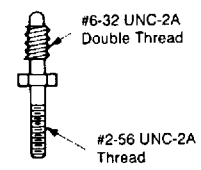


Male
Military Part No. M55302/113-12
AMP Part No. 530754-1

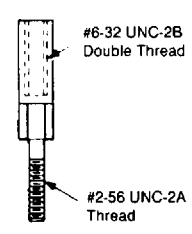
Fixed Jackscrews

Material: Passivated stainless steel

Note: To be used with receptacle assemblies shown on pages 8 thru 14 for mating with pin assemblies shown above.



Male
Military Part No. M55302/113-14
AMP Part No. 531141-3
(Nut supplied by customer)



Female
Military Part No. M55302/113-13
AMP Part No. 531141-4
(Nut supplied by customer)