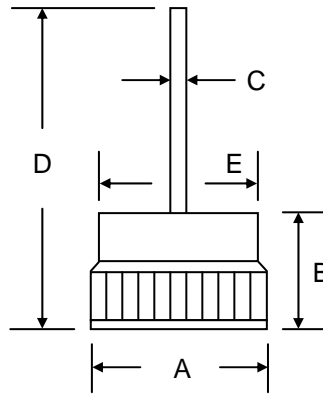


Features

- Glass Passivated Die Construction
- Low Leakage
- Low Cost
- High Surge Current Capability
- Typical IR less than 5.0μA

Mechanical Data

- Case: 13mm Motorola Type Press-Fit
- Terminals: Contact Areas Readily Solderable
- Polarity: Cathode to Case (Reverse Units Are Available Upon Request and Are Designated By A "R" Suffix, i.e. MD2502GR or MD2504GR)
- Polarity: Red Color Equals Standard, Black Color Equals Reverse Polarity
- Mounting Position: Any
- **Lead Free: For RoHS / Lead Free Version, Add "-LF" Suffix to Part Number, See Page 2**



Anode +



13mm Motorola		
Dim	Min	Max
A	12.80	13.20
B	7.70	8.10
C	1.25	1.31
D	26.50	—
E	11.10	11.75
All Dimensions in mm		

Maximum Ratings and Electrical Characteristics @T_A=25°C unless otherwise specified

Single Phase, half wave, 60Hz, resistive or inductive load.
For capacitive load, derate current by 20%.


Characteristic	Symbol	MD 2500G	MD 2501G	MD 2502G	MD 2503G	MD 2504G	MD 2505G	MD 2506G	Unit
Peak Repetitive Reverse Voltage	V _{RRM}	50	100	200	300	400	500	600	V
Working Peak Reverse Voltage	V _{VRWM}								
DC Blocking Voltage	V _R								
RMS Reverse Voltage	V _{R(RMS)}	35	70	140	210	280	350	420	V
Average Rectified Output Current @T _C = 150°C	I _O	25							A
Non-Repetitive Peak Forward Surge Current 8.3ms Single Half Sine-Wave Superimposed on Rated Load (JEDEC Method)	I _{FSM}	300							A
Forward Voltage @I _F = 25A	V _{FM}	1.0							V
Peak Reverse Current @T _A = 25°C At Rated DC Blocking Voltage @T _A = 100°C	I _{RM}	5.0 500							μA
Typical Junction Capacitance (Note 1)	C _J	300							pF
Typical Thermal Resistance (Note 2)	R _{JC}	1.2							°C/W
Operating and Storage Temperature Range	T _J , T _{STG}	-65 to +175							°C

Note: 1. Measured at 1.0 MHz and applied reverse voltage of 4.0V D.C.
2. Thermal Resistance: Junction to case, single side cooled.

ORDERING INFORMATION

Product No.	Package Type	Shipping Quantity
MD2500G	13mm Motorola Press-Fit	100 Units/Tray
MD2501G	13mm Motorola Press-Fit	100 Units/Tray
MD2502G	13mm Motorola Press-Fit	100 Units/Tray
MD2503G	13mm Motorola Press-Fit	100 Units/Tray
MD2504G	13mm Motorola Press-Fit	100 Units/Tray
MD2505G	13mm Motorola Press-Fit	100 Units/Tray
MD2506G	13mm Motorola Press-Fit	100 Units/Tray

1. Shipping quantity given is for minimum packing quantity only. For minimum order quantity, please consult the Sales Department.
2. **To order Lead Free version (with Lead Free finish), add "-LF" suffix to part number above. For example, MD2500G-LF.**

WON-TOP ELECTRONICS and  are registered trademarks of Won-Top Electronics Co., Ltd (WTE). WTE has checked all information carefully and believes it to be correct and accurate. However, WTE cannot assume any responsibility for inaccuracies. Furthermore, this information does not give the purchaser of semiconductor devices any license under patent rights to manufacturer. WTE reserves the right to change any or all information herein without further notice.

WARNING: DO NOT USE IN LIFE SUPPORT EQUIPMENT. WTE power semiconductor products are not authorized for use as critical components in life support devices or systems without the express written approval.

Won-Top Electronics Co., Ltd.
No. 44 Yu Kang North 3rd Road,
Chine Chen Dist., Kaohsiung 806, Taiwan
Phone: 886-7-822-5408 or 886-7-822-5410
Fax: 886-7-822-5417
Email: sales@wontop.com
Internet: <http://www.wontop.com>

We power your everyday.