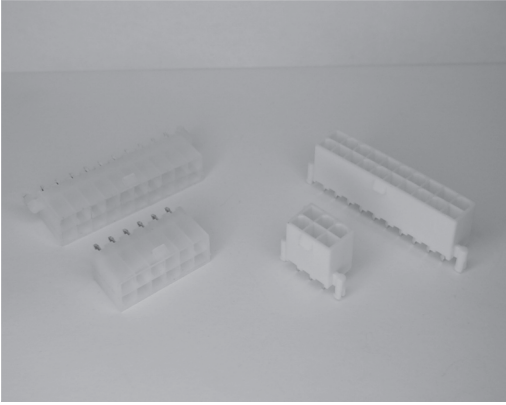


210/ATX



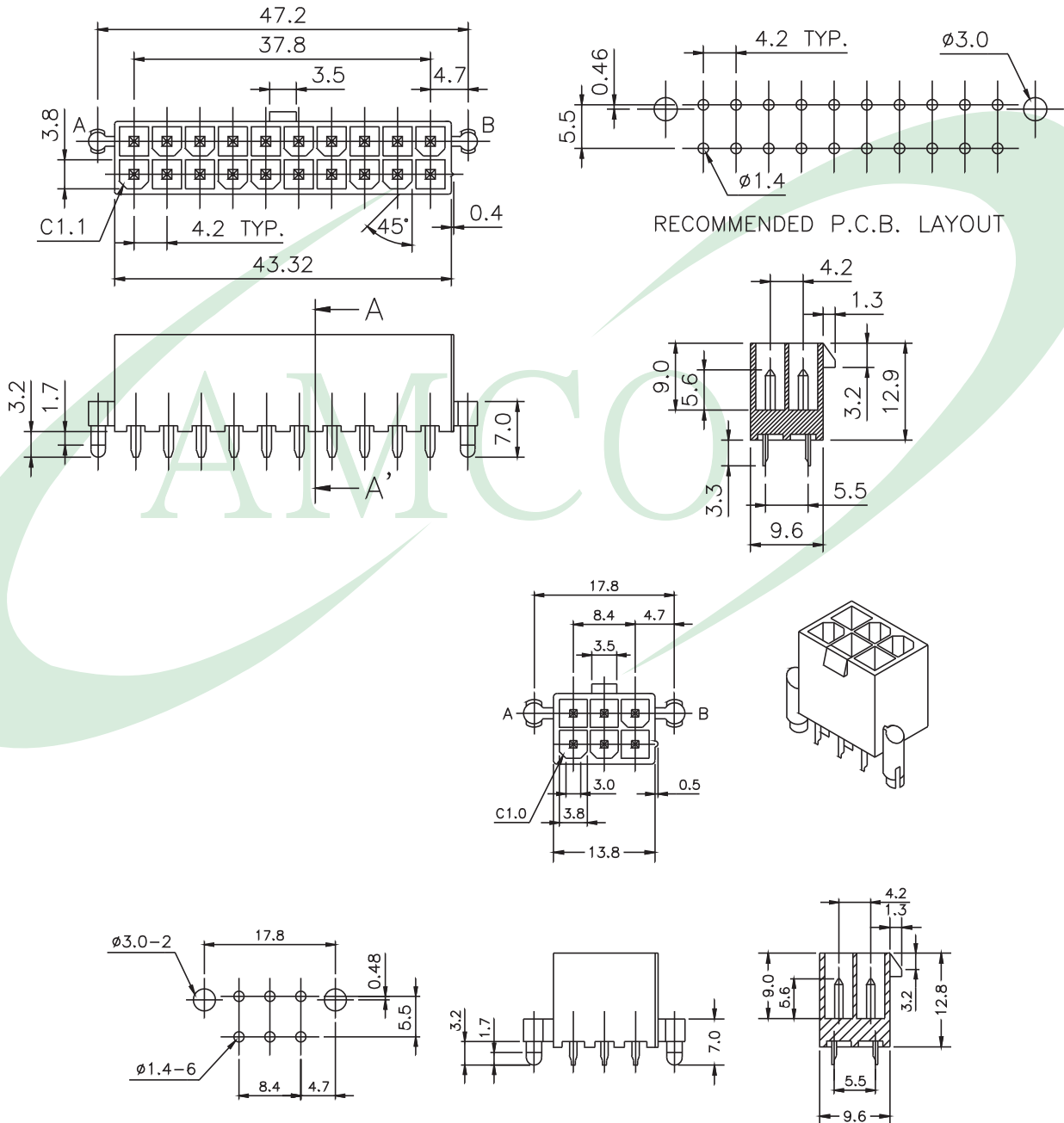
MATERIAL:

1. INSULATOR : NYLON 66 UL94V-0.
2. CONTACT : PHOSPHORBRONZE.
3. CONTACT PLATED : TIN OVER NICKEL.

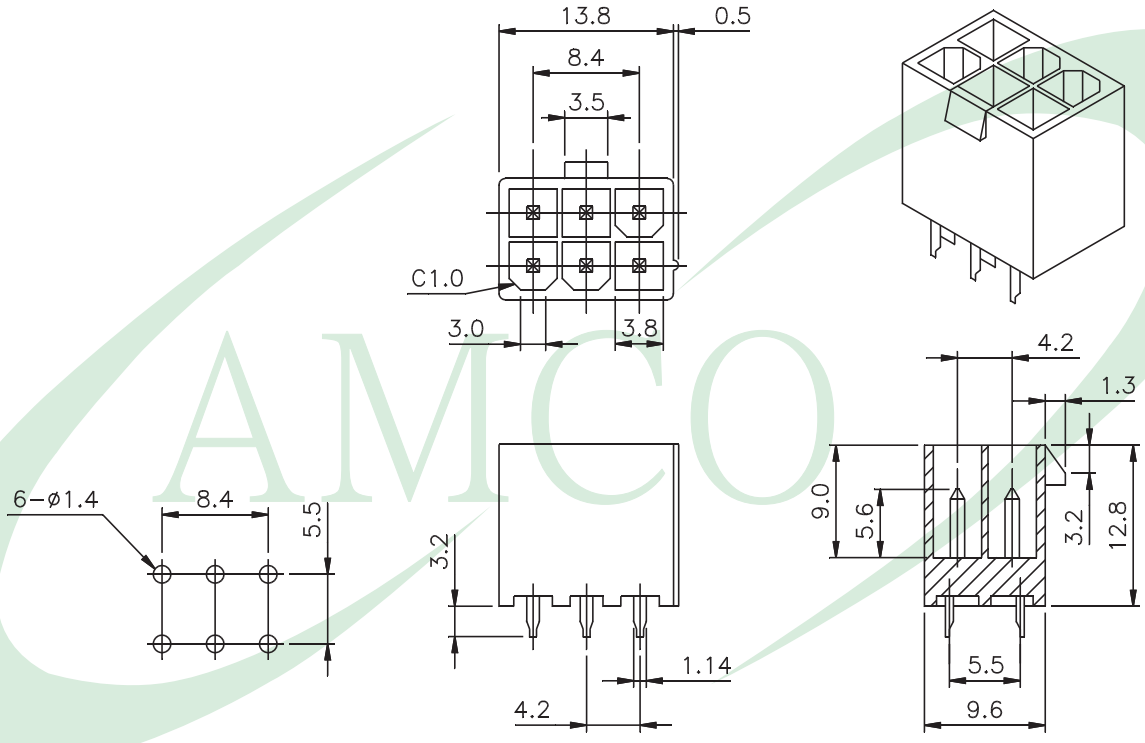
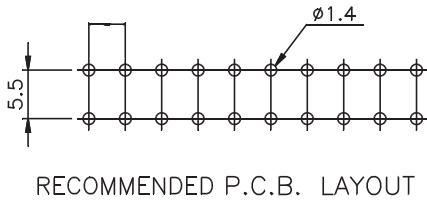
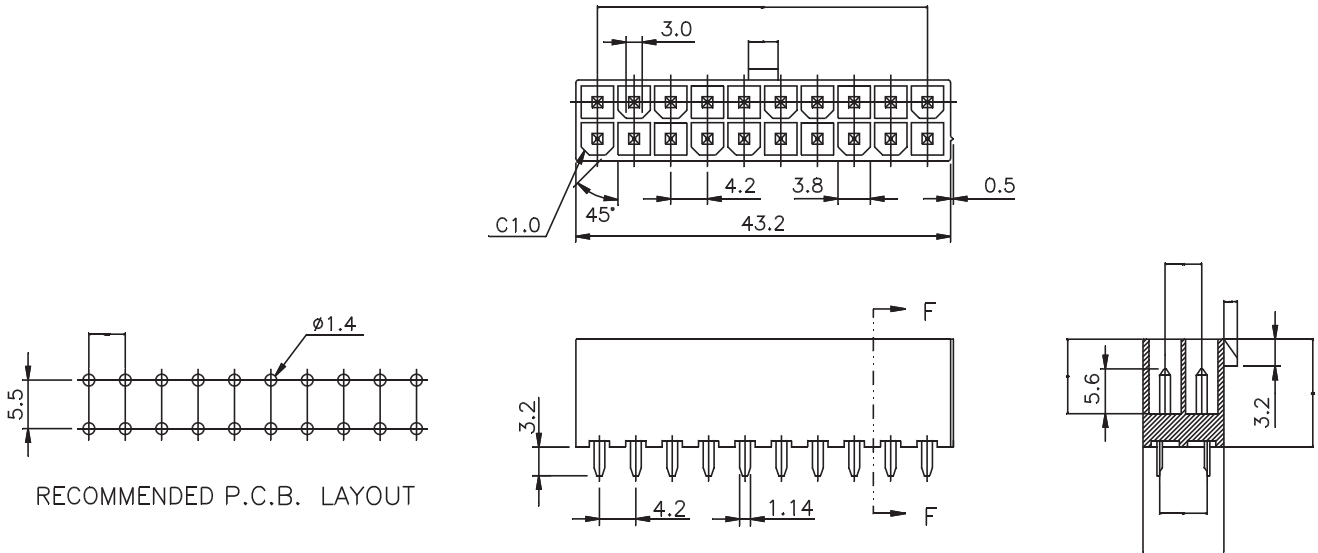
ELECTRICAL:

1. CURRENT RATING : 9 AMPS PER CIRCUIT MAX.
2. WITHSTANDING VOLTAGE : AC 600 V RMS.
3. CONTACT RESISTANCE : 10 MILLIOHMS MAX.
4. INSULATION RESISTANCE : 1000 MEGOHMS MIN.

With Pillar



Without Pillar



210. ATX POWER
Series No.

1	2	3	4
2	1	0	

No. of Contacts

5	6
0	6

06-24 PIN

Housing

Type

7
Y

Y: With 2 Pillar
N: Without 2 Pillar

Contact Plated

8	9
T	1

T1: TIN
G1: Gold Flash S1: Gold Flash
G2: 3u" Gold S2: 3u" Gold
G3: 5u" Gold S3: 5u" Gold
G4: 10u" Gold S4: 10u" Gold
G5: 15u" Gold S5: 15u" Gold
G6: 30u" Gold S6: 30u" Gold
(G: Full Gold)(S: Selective Gold)

Plastic

Color

10
M

M: Milk-White
N: Natural

Branding

11
A

A: Amco Mark
N: No Mark