

4

3

2

1



REVISION DATA				
SYM	ECN	DESCRIPTION	DATE	APPROVED
	00	new part	16.12.	2014

Technical Specification

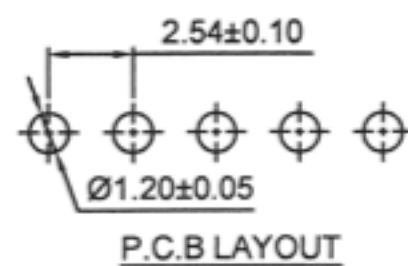
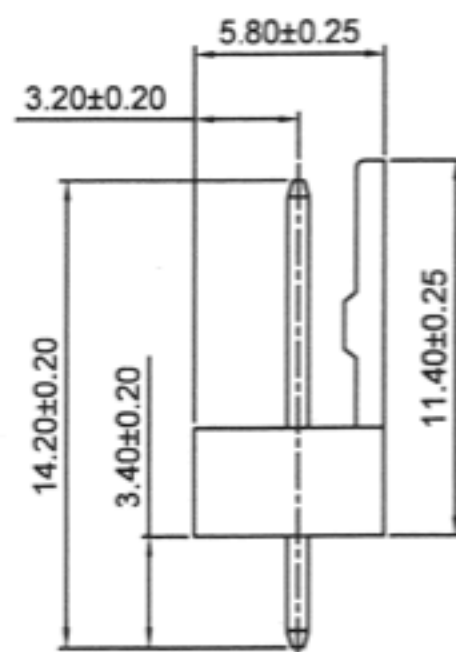
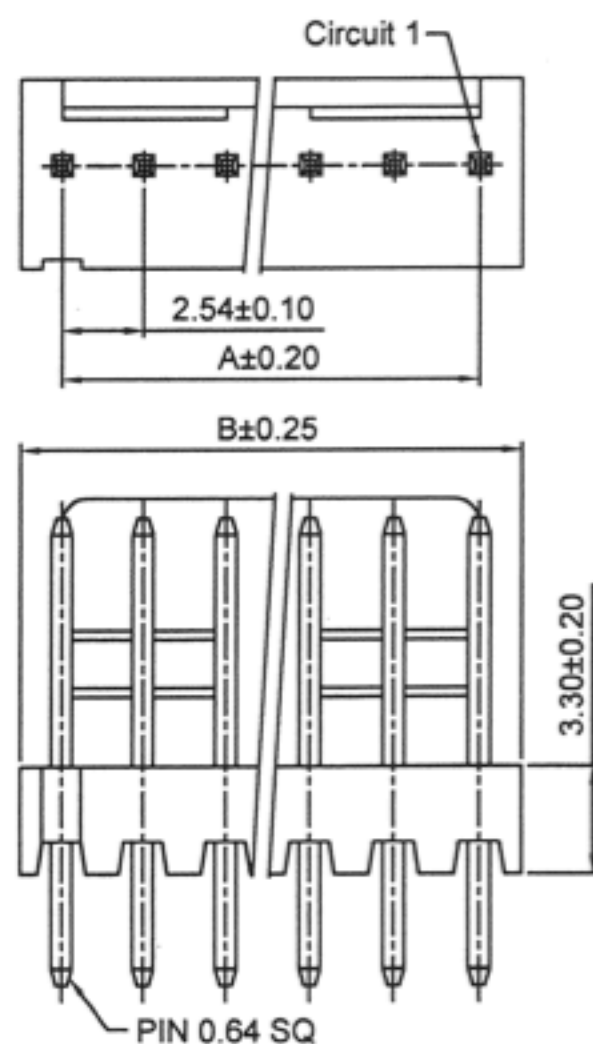
Reference Informations:

- *Material:Pin:Brass/Tin over Nickel
Insulator:Nylon 66 ,UL94V-0
- *Mates with CJT A2543 series Housing
- *Color:Beige

Dimensions:

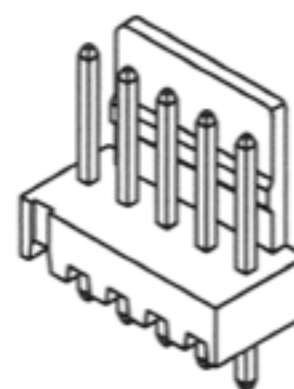
Dimensions	
A	B
2.54	5.08
5.08	7.62
7.62	10.16
10.16	12.70
12.70	15.24
15.24	17.78
17.78	20.32
20.32	22.86
22.86	25.40
25.40	27.94
27.94	30.48
30.48	32.02
32.02	35.56
35.56	38.10
38.10	40.64
40.64	43.18
43.18	45.72
45.72	48.26
48.26	50.80
50.80	53.34
53.34	55.88
55.88	58.42
58.42	60.96
60.96	63.50
63.50	66.04
66.04	68.58
68.58	71.12

Unit: mm



Order Information

C25406	-	XX	XX	XX
		No.Of Positions 02 to 24	Packing A=Bag B=Box C=Tube xx=on request	Special Customer



TOLERANCE:	PROJECTON		TITLE:	Wafer Connector 2.54mm- Straight Type	
ANGLE ±5°	DATE	16.12.2014			
X.XXX ±0.05	DRAWN	SONG			
X.XX ±0.15	CHECKED	CHEN	DRAWING NO: 21499199		
X.X ±0.20	APPROVED	CHEN	REV: A	UNIT: mm	SCALE: SIZE: A4
X. ±0.35					