

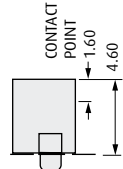
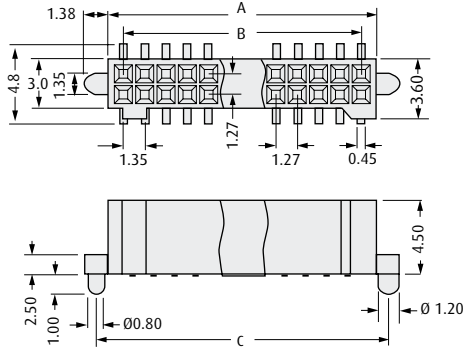
M50 Connectors

Vertical SMT Polarised Connectors

- ❖ Mating connectors in Surface Mount format.
- ❖ Dual Polarisation to prevent mis-mating.
- ❖ Locating pegs to ensure correct positioning on the board.
- ❖ Shrouded for additional pin protection.

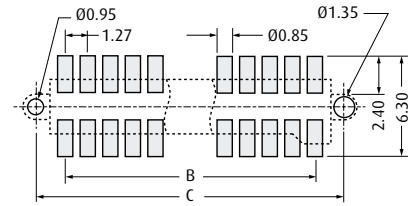
1.27mm (.050") PITCH

FEMALE



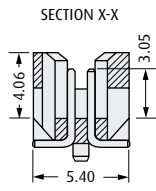
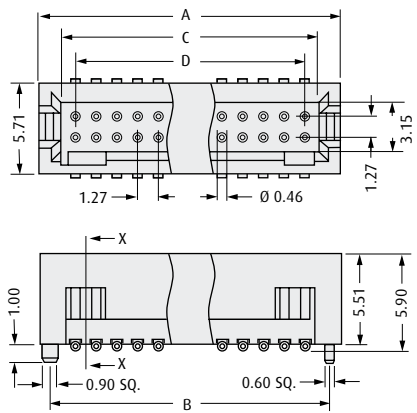
CALCULATION

A	$B + 1.67$
B	$1.27 \times (\text{No. of ways per row} - 1)$
C	$B + 3.05$



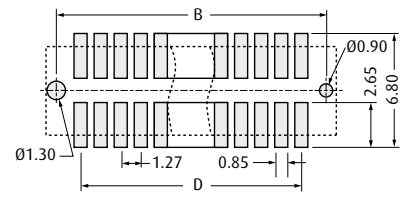
Recommended PC Board Pattern

MALE



CALCULATION

A	$D + 4.37$
B	$D + 2.95$
C	$D + 2.61$
D	$1.27 \times (\text{No. of ways per row} - 1)$



Recommended PC Board Pattern

HOW TO ORDER

M50 - 4 X 2 XX 05

SERIES CODE

TYPE	
3	Female
9	Male

FINISH

05	Gold	
----	------	--

NO OF WAYS PER ROW
08, 10, 15, 20, 25, 30, 35, 40, 50

www.harwin.com

All dimensions in mm.

