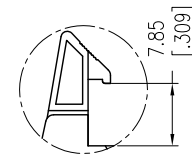
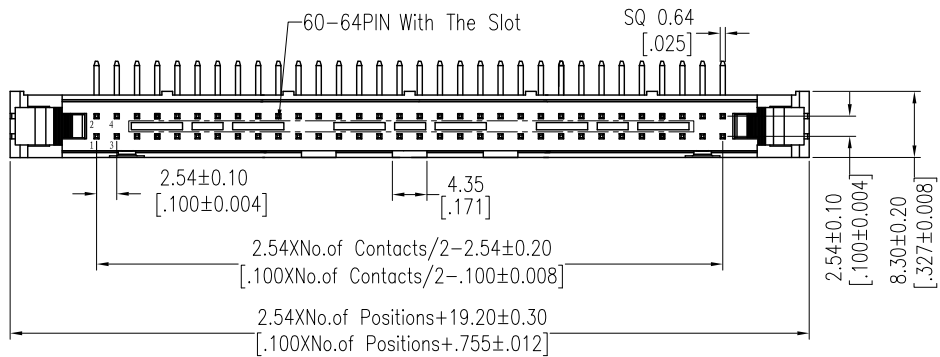
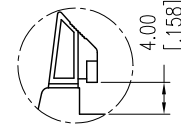


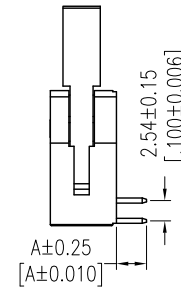
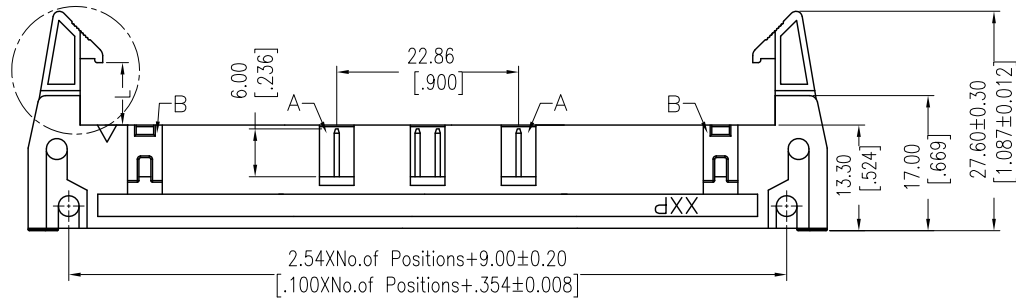
# Lat-Con, Series 050, 90° Male Header, different Latch Options, grey



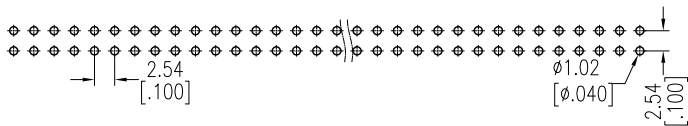
Long Latch



Short Latch



Recommended P.C.B Layout (Top Side)  
(PCB BOARD TOLERANCE±0.05)

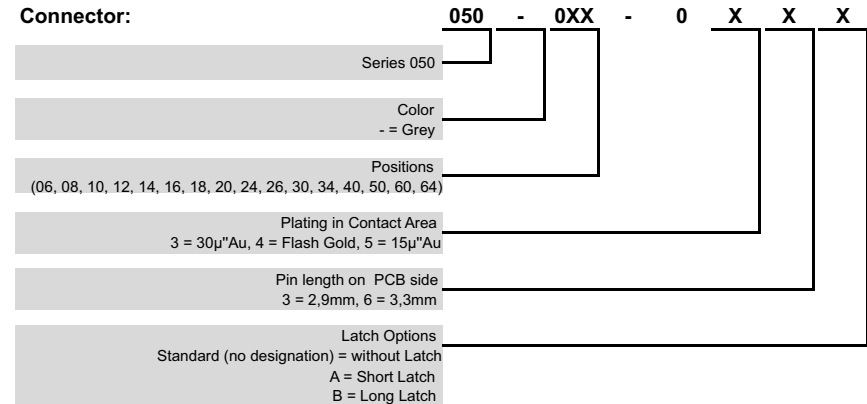


NOTES:  
 Current Rating: 3,0 AMP  
 Contact Resistance: 20mΩ max.  
 Withstand Voltage: 1000V AC/DC  
 Insulation Resistance: 1000MΩ min.  
 Operation Temperature: -40°C to +105°C

Contact Material: Copper Alloy  
 Contact Plating: Au or Sn over Ni  
 Insulator Material: PBT (UL94 V-0)

Positions	Feature A	Feature B	OPERATION	
			X.X	±0.40
			X.XX	±0.25
6 - 18			X.XXX	±0.15
20 - 58		x	Angle	± 3°
60 - 64	x	x	DIM	TOL

Connector:



REV	DATE	NOTE	NAME
3	25.01.2022	Revised	PER
2	08.12.2021	Revised	PER
1	22.04.2021	issued	JAL