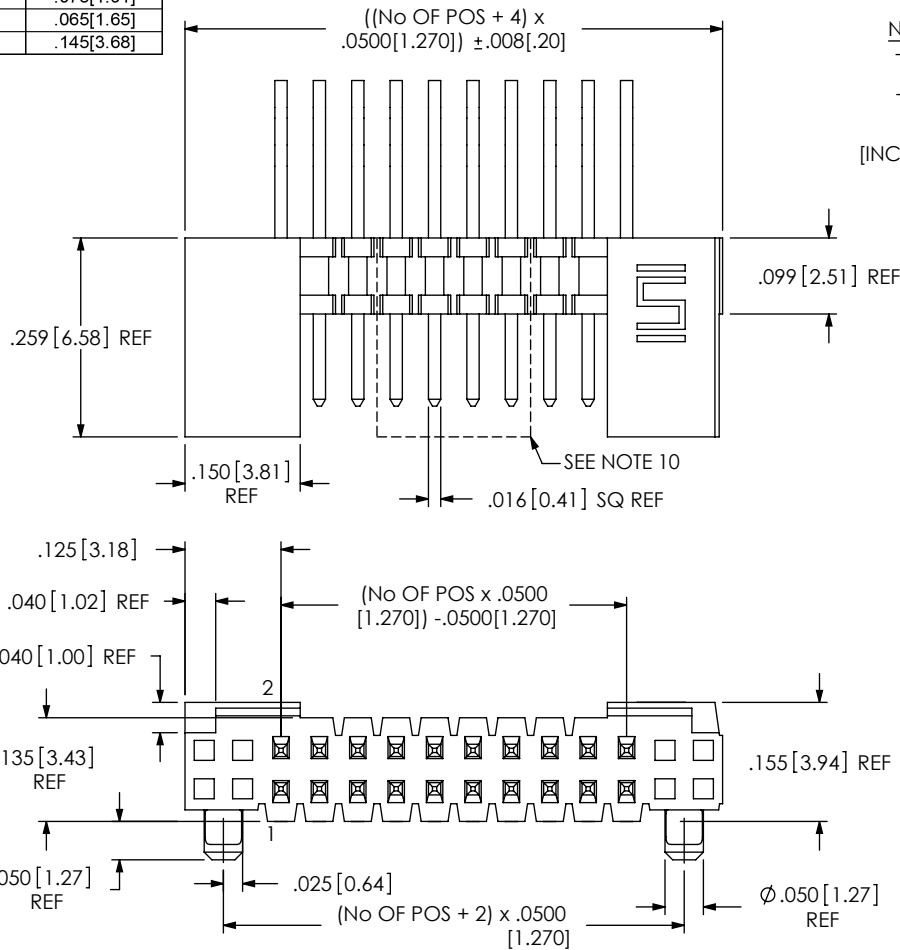


TABLE 1	
STYLE	"A"
-01	.120[3.05]
-02	.075[1.91]
-03	.065[1.65]
-04	.145[3.68]

DO NOT SCALE FROM THIS PRINT



FSH-1XX-XX-XXX-XX-XX-X-XX

No OF POSITIONS
 -DH ROW SPEC:
 -05 THRU -25
 -RA ROW SPEC:
 -05 THRU -46
 (PER ROW)
 [INCREMENTS OF 5 STD]

OPTION
 -TR: TAPE & REEL
 (NOT AVAILABE WITH -RA OPTION)

OPTION
 -C: POLYAMIDE FILM (USE K-500-300)
 (10 POSITION MIN.) (SEE FIG. 3, SHT 2)
 (NOT AVAILABE WITH -RA)

LEAD STYLE
 -01
 -02
 -03
 -04

OPTION
 -SL: SOLDER LOCKS

ROW/TAIL SPECIFICATION
 -DH: DOUBLE HORIZONTAL
 (USE FSH-XX-D-ES-XX-XX)
 -RA: RIGHT ANGLE
 (USE FSH-XX-D-ES-XX-XX)

PLATING SPECIFICATION

-L: LIGHT SELECTIVE (USE T-1S15-XX-L)
 -F: FLASH SELECTIVE (USE T-1S15-XX-F)
 -S: SELECTIVE GOLD/MATTE TIN TAIL (USE T-1S15-XX-S)
 -LM: LIGHT SELECTIVE GOLD/MATTE TIN TAIL (USE T-1S15-XX-L)
 -FM: FLASH SELECTIVE GOLD/MATTE TIN TAIL (USE T-1S15-XX-F)
 -STL: SELECTIVE GOLD CONTACT, TIN/LEAD TAIL (USE T-1S15-XX-STL)
 -FTL: FLASH SELECTIVE GOLD CONTACT, TIN/LEAD TAIL (USE T-1S15-XX-FTL)

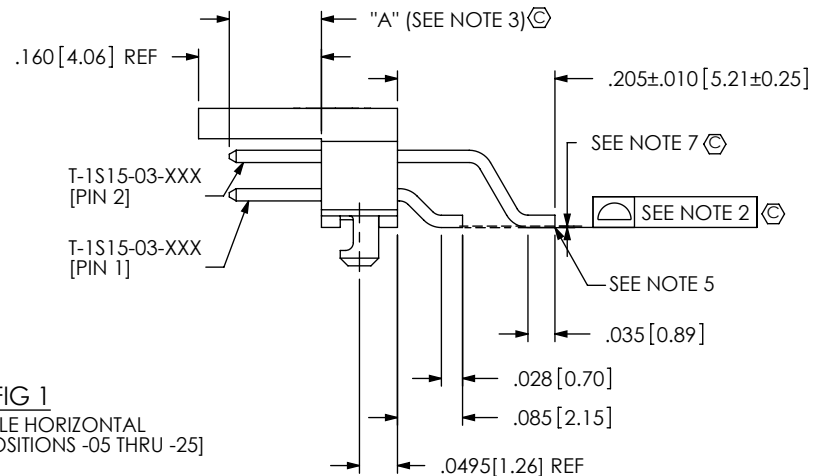


FIG 1
 -DH: DOUBLE HORIZONTAL
 [AVAILABLE IN POSITIONS -05 THRU -25]

NOTES:

1. $\text{\textcircled{C}}$ REPRESENTS A CRITICAL DIMENSION.
2. COPLANARITY TO INCLUDE INSULATOR: .0060[.152].
3. MAXIMUM HEIGHT VARIATION BETWEEN ROWS: .005[.13].
4. MINIMUM PUSHOUT FORCE: .5 LB.
5. MAXIMUM BURR ALLOWED [SHEARED TAILS]: .002[.05].
6. MAXIMUM ALLOWABLE BOW: .002[.05] INCH/INCH AFTER ASSEMBLY.
7. FIRST AND LAST PINS TO BE FLUSH TO .001 ABOVE OR BELOW LINE MADE BY BODY [SEE SHT 3].
8. MAX FLASH TO BE .015[.38].
9. END SHROUDS NOT TO BE CUT.
10. POSITIONS 13-28 (ONCE CUT) TO HAVE 1 TAB EVENLY SPACED BETWEEN THE FIRST AND LAST CORE. POSITIONS 29-46 TO HAVE TWO TABS EVENLY SPACED BETWEEN THE FIRST AND LAST CORES.
11. FOR POSITIONS 13-27, MIDDLE SHROUD WILL NOT BE CENTERED FOR ODD POSITION PARTS.
12. FIRST AND LAST PINS TO BE FLUSH TO .004 ABOVE LINE MADE BY BODY AND PIN 1 (SEE SHT 4).

PATENT NUMBERS
 6159045

UNLESS OTHERWISE SPECIFIED,
 DIMENSIONS ARE IN INCHES.
 TOLERANCES ARE:
 DECIMALS ANGLES
 .XX: $\pm .01[.3]$ 2°
 .XXX: $\pm .005[.13]$
 .XXXX: $\pm .0020[.051]$

PROPRIETARY NOTE
 THIS DOCUMENT CONTAINS INFORMATION
 CONFIDENTIAL AND PROPRIETARY TO
 SAMTEC, INC. AND SHALL NOT BE REPRODUCED
 OR TRANSFERRED TO OTHER DOCUMENTS OR
 DISCLOSED TO OTHERS OR USED FOR ANY
 PURPOSE OTHER THAN THAT WHICH IT WAS
 OBTAINED WITHOUT THE EXPRESSED WRITTEN
 CONSENT OF SAMTEC, INC.

samtec

520 PARK EAST BLVD. NEW ALBANY, IN 47150
 PHONE: 812-944-6733 FAX: 812-948-5047
 e-Mail: info@SAMTEC.com code: 55322

MATERIAL: VECTRA E130I, COLOR: BLACK TERMINAL: PHOS BRONZE, THICKNESS: .0160 SQ	DO NOT SCALE DRAWING	SHEET SCALE: 2.5:1	DESCRIPTION: .050 SHROUDED TERMINAL ASSEMBLY
	DWG. NO. FSH-1XX-XX-XXX-XX-XX-X-XX		
	BY: DEANP	9/8/1999	SHEET 1 OF 4

FIG 2

-RA: RIGHT ANGLE
(SAME AS FIG. 1, UNLESS OTHERWISE STATED)
[AVAILABLE IN POSITIONS -05 THRU -46]

TABLE 2	
STYLE	"B"
-01	.120[3.05]
-02	.075[1.91]
-03	.065[1.65]
-04	.145[3.68]

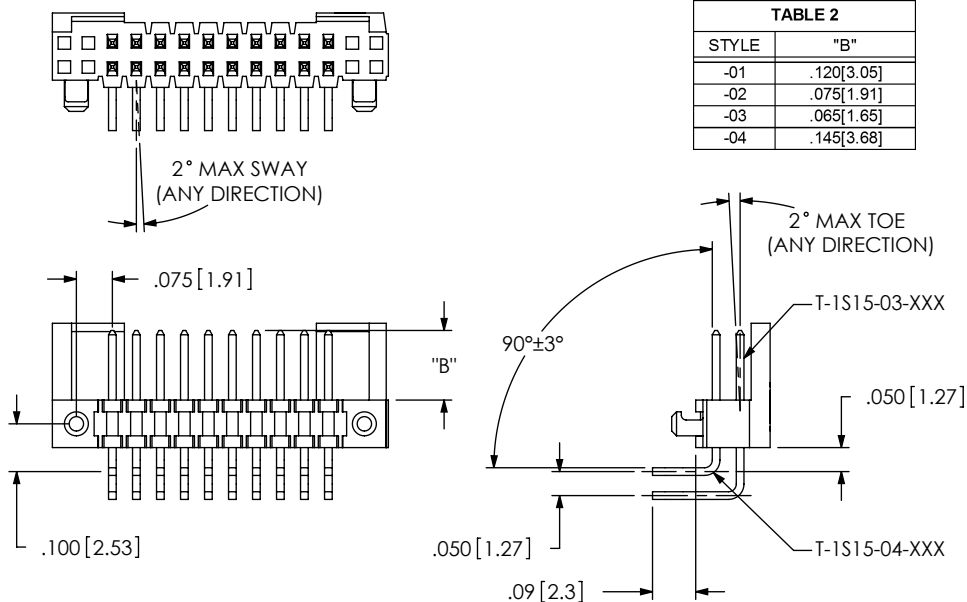
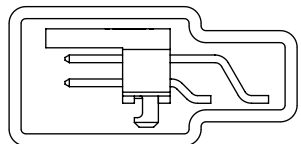
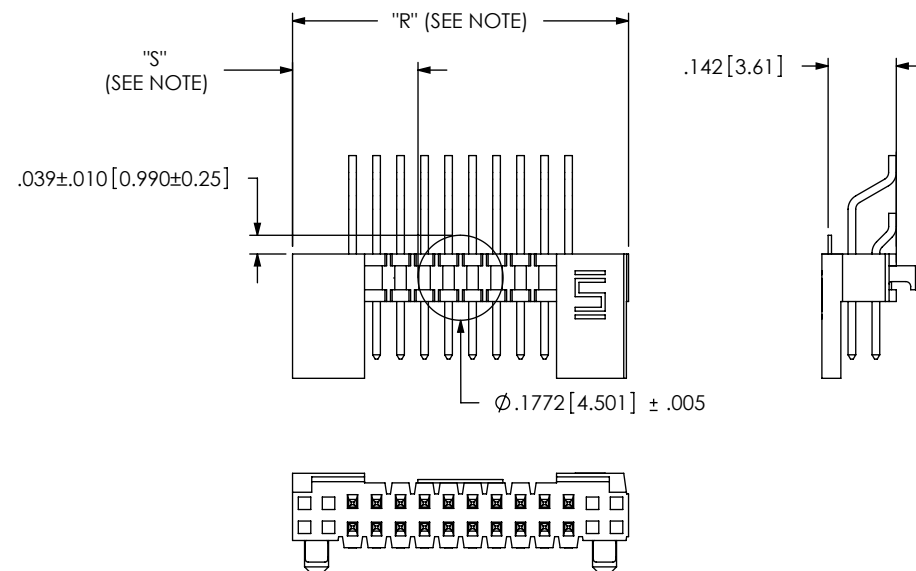


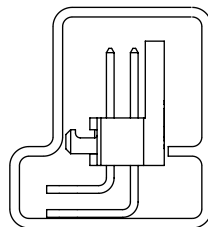
FIG 3

-C: POLYIMIDE FILM
NOTE: "R" = USE MEASURED DIMENSION (REF)
"S" = $\{("R" - .1772[4.501]) / 2\} \pm .020[.51]$



-DH
TUBE: PT-1-24-02-53
PLUG: TP-09

PACKAGING VIEW
TUBE ALL POSITIONS



-RA
TUBE: PT-1-24-01-45
PLUG: TP-07

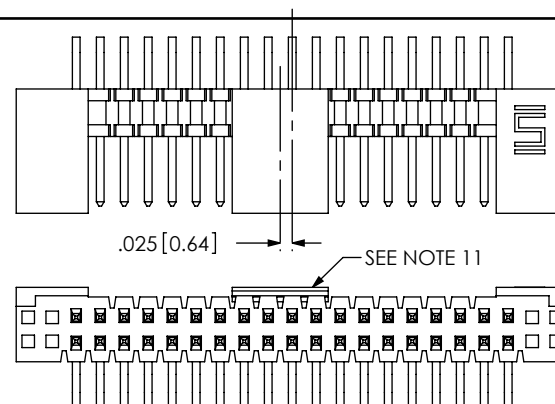


FIG 4
FSH-119-XX-XX-RA-XX
SHOWN

F:\DWG\MISC\MKTG\FSH-1XX-XX-XXX-XX-XX-X-XX-MKT.SLDDRW

PROPRIETARY NOTE

THIS DOCUMENT CONTAINS INFORMATION CONFIDENTIAL AND PROPRIETARY TO SAMTEC, INC. AND SHALL NOT BE REPRODUCED OR TRANSFERRED TO OTHER DOCUMENTS OR DISCLOSED TO OTHERS OR USED FOR ANY PURPOSE OTHER THAN THAT WHICH IT WAS OBTAINED WITHOUT THE EXPRESSED WRITTEN CONSENT OF SAMTEC, INC.

DO NOT SCALE DRAWING

SHEET SCALE: 2.5:1



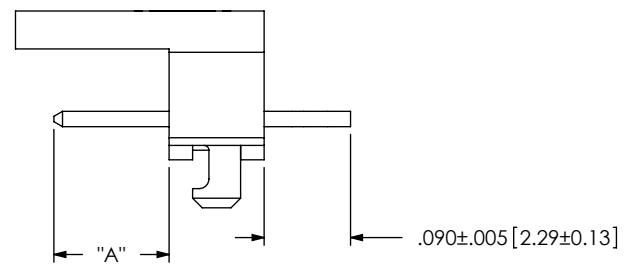
520 PARK EAST BLVD, NEW ALBANY, IN 47150
PHONE: 812-944-6733 FAX: 812-948-5047
e-Mail: info@SAMTEC.com code: 55322

DESCRIPTION:
.050 SHROUDED TERMINAL ASSEMBLY

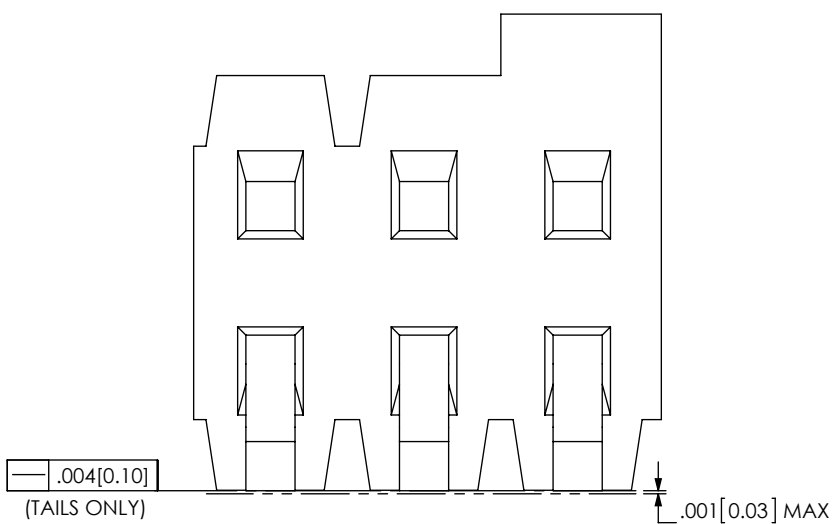
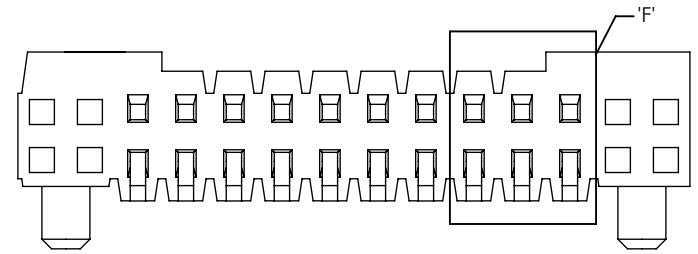
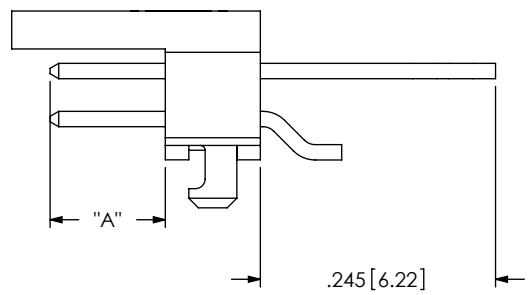
DWG. NO.
FSH-1XX-XX-XXX-XX-XX-X-XX

BY: DEANP 9/8/1999 SHEET 2 OF 4

IN-PROCESS 1



IN-PROCESS 2
(AFTER FIRST ROW FORMED)



.001 [0.03] MAX
(SEE NOTE 7)

DETAIL 'F'
SCALE 16:1

PROPRIETARY NOTE

THIS DOCUMENT CONTAINS INFORMATION CONFIDENTIAL AND PROPRIETARY TO SAMTEC, INC. AND SHALL NOT BE REPRODUCED OR TRANSFERRED TO OTHER DOCUMENTS OR DISCLOSED TO OTHERS OR USED FOR ANY PURPOSE OTHER THAN THAT WHICH IT WAS OBTAINED WITHOUT THE EXPRESSED WRITTEN CONSENT OF SAMTEC, INC.



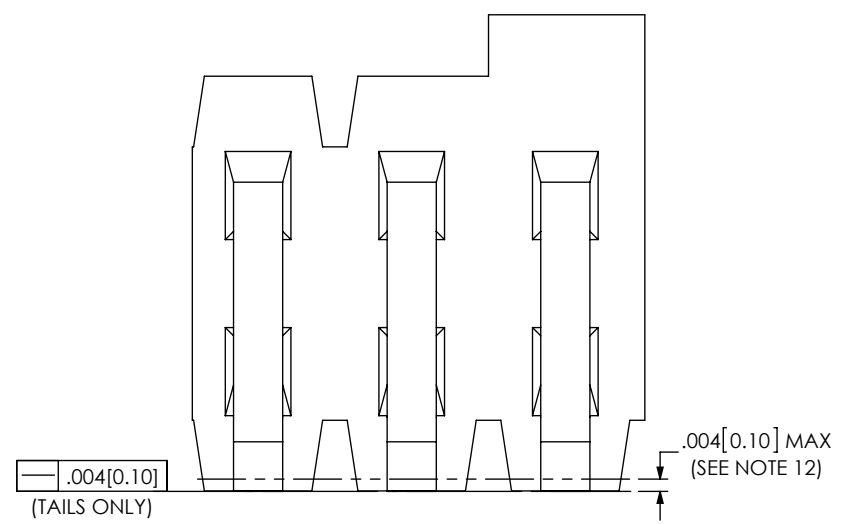
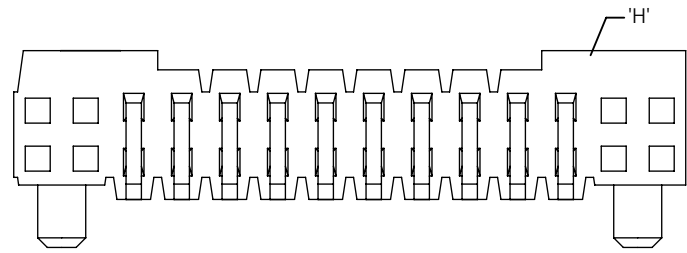
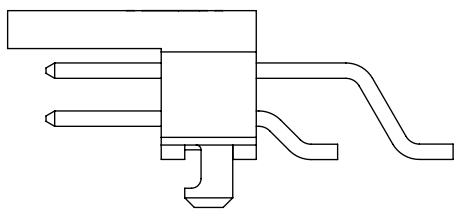
520 PARK EAST BLVD, NEW ALBANY, IN 47150
PHONE: 812-944-6733 FAX: 812-948-5047
e-Mail: info@SAMTEC.com code: 55322

SHEET SCALE: 2.5:1

DESCRIPTION:
.050 SHROUDED TERMINAL ASSEMBLY

DWG. NO.
FSH-1XX-XX-XXX-XX-XX-X-XX

BY: DEANP 9/8/1999 SHEET 3 OF 4



DETAIL 'H'
SCALE 16:1

PROPRIETARY NOTE
 THIS DOCUMENT CONTAINS INFORMATION
 CONFIDENTIAL AND PROPRIETARY TO
 SAMTEC, INC. AND SHALL NOT BE REPRODUCED
 OR TRANSFERRED TO OTHER DOCUMENTS OR
 DISCLOSED TO OTHERS OR USED FOR ANY
 PURPOSE OTHER THAN THAT WHICH IT WAS
 OBTAINED WITHOUT THE EXPRESSED WRITTEN
 CONSENT OF SAMTEC, INC.



520 PARK EAST BLVD, NEW ALBANY, IN 47150
 PHONE: 812-944-6733 FAX: 812-948-5047
 e-Mail: info@SAMTEC.com code: 55322

SHEET SCALE: 2.5:1

DESCRIPTION:
 .050 SHROUDED TERMINAL ASSEMBLY

DWG. NO.
 FSH-1XX-XX-XXX-XX-XX-X-XX

BY: DEANP 9/8/1999 SHEET 4 OF 4