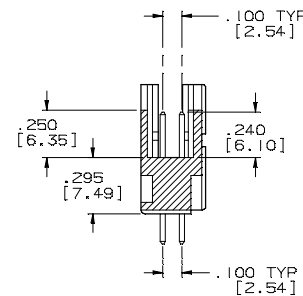
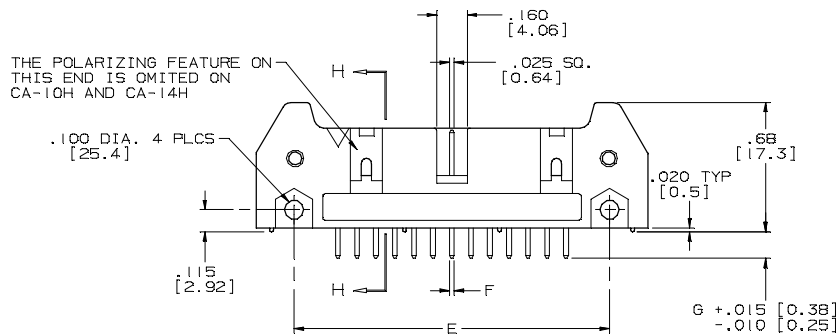
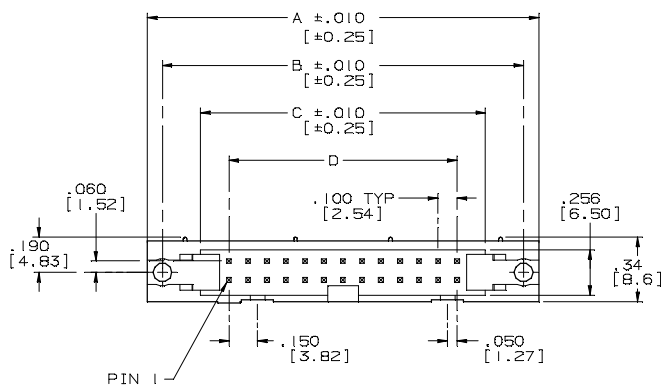
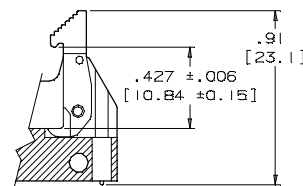


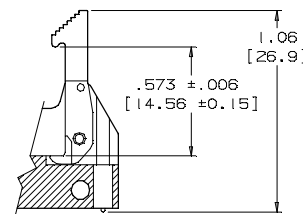
LTR	DESCRIPTION	DATE	APPROVED
A	RELEASE TO PRODUCTION	02-22-83	J.McA.
B	SEE ECO 546	11-08-83	J.McA.
C	SEE ECO 576	01-20-84	J.McA.
D	SEE ECO 1093	7-27-88	A. J.
E	SEE DO 4122	C.P. 08-16-00	A. J.
F	SEE DO 5492	C.P. 05-21-04	A. J.
G	SEE DO 5798	C.P. 07-01-05	L.F.
H	SEE DO 6398	C.P. 04-17-07	A. J.
J	SEE DO 6495	C.P. 08-03-07	A. J.



SECTION H-H
SCALE 2:1

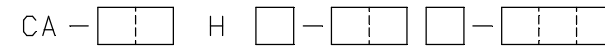


-S SOCKET LATCH
USE WITH IDS2



-SR STRAIN RELIEF LATCH
USE WITH IDS2
WITH STRAIN RELIEF

ORDERING NOMENCLATURE:



NUMBER OF
PIN POSITIONS
HEADER

TAIL TYPE: (F DIM.)

BLANK = .025 [0.64] SQUARE PIN
(B PLATING)
M = .028 [0.71] ROUND PIN
(F & C PLATING)
SOLDER TAILS ONLY
(CONFORMS TO MIL-C-83503/20B)

PIN LENGTH: (G DIM.)

1 = .120 [3.05] (SHORT SOLDER TAIL)
2 = .160 [4.06] (LONG SOLDER TAIL)
3W = .610 [15.49] (3 LEVEL WRAP TAIL)

PLATING:

B = .000010 [.00025] GOLD OVER .000075 [.00190] NICKEL
C = CONTACT AREA: .000015 [.00038] GOLD
TAIL AREA: .000100 [.00254] TIN
UNDERPLATE: .000040 [.00102] NICKEL
F = CONTACT AREA: .000030 [.00076] GOLD
TAIL AREA: .000150 [.00381] TIN
UNDERPLATE: .000075 [.00190] NICKEL

ADD IF REQUIRED:

BLANK = NO LATCHES
S = SOCKET LATCH
(USE WITH ISD2)
SR = STRAIN RELIEF LATCH
(USE WITH ISD2
WITH STRAIN RELIEF)
SPT = 10 POSITION ONLY
(SEE NOTE 6)

TABULATION:

NO. OF POSITIONS	A		B		C		D		E	
	IN	MM	IN	MM	IN	MM	IN	MM	IN	MM
10	1.26	32.0	1.100	27.94	.700	17.78	.400	10.16	.860	21.84
14	1.46	37.1	1.300	33.02	.900	22.86	.600	15.24	1.060	26.92
16	1.56	39.6	1.400	35.56	1.000	25.40	.700	17.78	1.160	29.46
20	1.76	44.7	1.600	40.64	1.200	30.48	.900	22.86	1.360	34.54
26	2.06	52.3	1.900	48.26	1.500	38.10	1.200	30.48	1.660	42.16
34	2.46	62.5	2.300	58.42	1.900	48.26	1.600	40.64	2.060	52.32
40	2.76	70.1	2.600	66.04	2.200	55.88	1.900	48.26	2.360	59.94
50	3.26	82.8	3.100	78.74	2.700	68.58	2.400	60.96	2.860	72.64
60	3.76	95.5	3.600	91.44	3.200	81.28	2.900	73.66	3.360	85.34

8. MEETS THE REQUIREMENTS OF DIRECTIVE 2002/95/EC OF THE EUROPEAN PARLIAMENT AND OF THE COUNCIL OF 27 JANUARY 2003 ON THE RESTRICTION OF THE USE OF CERTAIN HAZARDOUS SUBSTANCES IN ELECTRICAL AND ELECTRONIC EQUIPMENT. (ROHS)

AVAILABLE ON -3W PIN ONLY

6. POLARIZING SLOTS:

- NO SLOT ON CA-10H, 1 POLARIZING FEATURE
- SINGLE SLOT ON CA-10H-SPT, NO POLARIZING FEATURES
- SINGLE SLOT ON CA-14H THRU CA-40H
- 3 SLOTS ON CA-50H AND CA-60H

5. LATCHES ARE RETAINED WITH A STAINLESS STEEL ROLL PIN

4. FOR DETAIL SPECIFICATIONS, REFER TO SPECIFICATION NO. CA-100025

3. PLATING: SEE ORDERING NOMENCLATURE

2. CONTACT MATERIAL: PHOSPHOR BRONZE

1. INSULATOR MATERIAL: GLASS FILLED POLYESTER, GRAY UL94V-0

NOTES:

DIMENSIONS ARE IN INCHES		APPROVALS		DATE
TOLERANCES ARE:		DRAWN	S. CABRERA 7-27-88	
DECIMALS	ANGLES	CHECKED	A. JOCHEN 7-27-88	
.XX ± .010	± 3°	THE INFORMATION AND DESIGN DISCLOSED HEREIN WAS ORIGINATED BY AND IS THE PROPERTY OF CIRCUIT ASSEMBLY CORPORATION. CIRCUIT ASSEMBLY CORPORATION RESERVES ALL PATENT, PROPRIETARY, DESIGN, MANUFACTURING, REPRODUCTION, USE AND SALES RIGHTS THEREIN, AND TO ANY ARTICLE DISCLOSED HEREIN EXCEPT TO THE EXTENT RIGHTS ARE EXPRESSLY GRANTED TO OTHERS. THE FOREGOING DOES NOT APPLY TO VENDOR PROPRIETARY RIGHTS.		
DECIMALS	ANGLES	SIZE	CODE IDENT NO.	DRAWING NO.
.X ± .25	± 3°	C	52072	620054
.XX ± .13		SCALE: 2:1		SHEET 1 OF 1
DO NOT SCALE DRAWING				

CA CIRCUIT ASSEMBLY CORP. 18 THOMAS ST., IRVINE, CALIFORNIA 92618-2777	
ASSEMBLY - HEADER CA-XXH "ROHS COMPLIANT"	
REV. J	