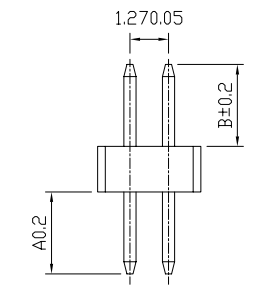
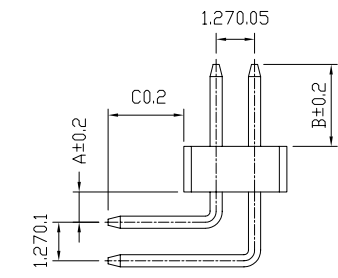
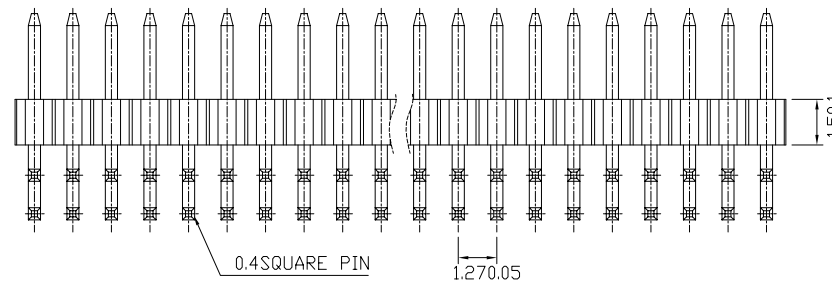
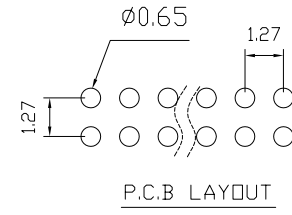
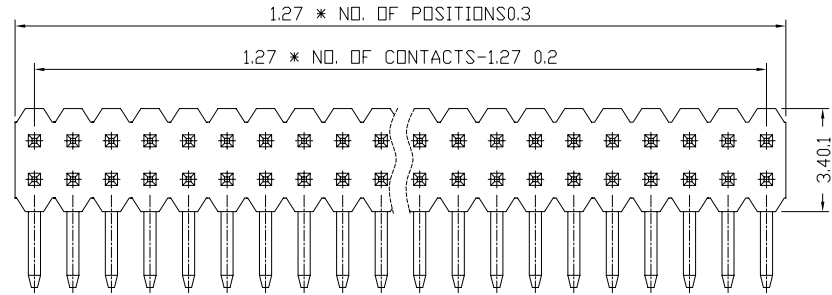


1.27MM PIN HEADER, DUAL ROW, STRAIGHT OR RIGHT ANGLE

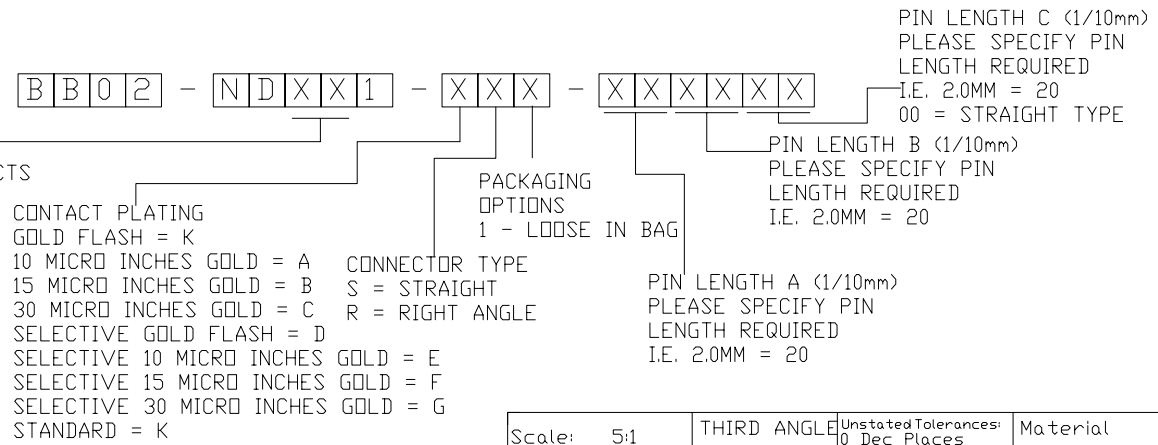
SPECIFICATIONS

CURRENT RATING : 1AMP  
 INSULATOR RESISTANCE : 5000 MEGOHMS MIN  
 CONTACT RESISTANCE : 20 MLLIOHMS MAX  
 DIELECTRIC WITHSTANDING : AC 500V  
 OPERATING TEMPERATURE : -40°C~+105°C  
 MAX PROCESSING TEMP : 230°C FOR 30~60 SECONDS  
 (260°C FOR 10 SECONDS)  
 CONTACT MATERIAL : BRASS  
 INSULATOR MATERIAL : POLYESTER , UL 94V-0  
 STANDARD : NYLON-6T  
 CONTACT PLATED : FULL GOLD FLASH



RIGHT ANGLE TYPE

STRAIGHT TYPE



Scale: 5:1	THIRD ANGLE		Unstated Tolerances: 0 Dec Places 1 Dec Places 2 Dec Places 3 Dec Places	Material SEE NOTE
Drawn: NJR				
App'd: XXXX	PIN HEADER		NOT TO SCALE	
Date: 24 FEB 04				



Type: BB02-ND  
 BB02-ND  
 Drawing Number:  
 Sheet 1 of 1