

FEATURES AND SPECIFICATIONS

Features and Benefits

- Sizes 4 to 50 circuits
- Designed to mate with industry standard headers utilizing short latch/eject levers

Physical

Housing: Black glass-filled polyester, UL 94V-0
 Operating Temperature: -40 to +105°C



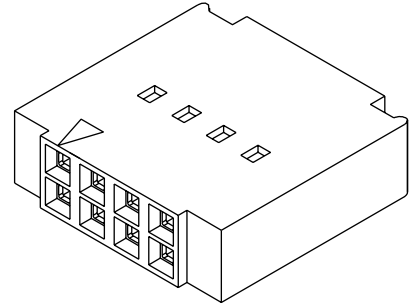
2.54mm (.100") Pitch

SL™

Crimp Housing

70450

Dual Row Version D



Reference Information

Product Specification: PS-70058

Packaging: Bag

UL File No.: E29179

CSA File No.: LR19980

Mates With: QF-50 Headers

Use With: 70058 and 71851 crimp terminals

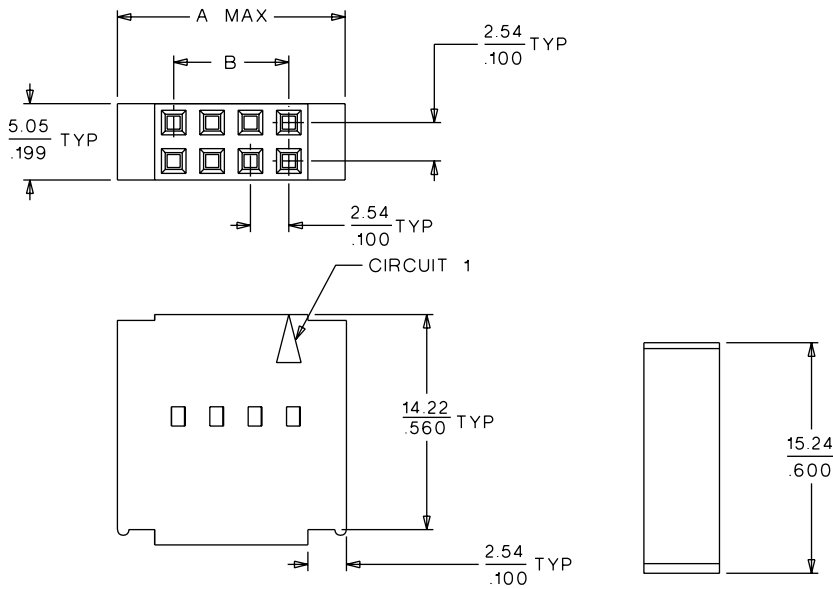
Designed In: Inches



2.54mm (.100") Pitch

CATALOG DRAWING (FOR REFERENCE ONLY)

Not For Use With C-Grid III™ Components



Delivered on a carrier with 20 pieces per strip.
Actual Size **Universal Polarizing Pin 40713-1**
 Order No. 15-04-0292

ORDERING INFORMATION AND DIMENSIONS

Circuits	Order No.	Dimension	
		A	B
4	• 22-55-3040	10.13 (.399)	2.54 (.100)
6	• 22-55-3060	12.67 (.499)	5.08 (.200)
8	• 22-55-3080	15.21 (.599)	7.62 (.300)
10	• 22-55-3100	17.75 (.699)	10.16 (.400)
12	• 22-55-3120	20.29 (.799)	12.70 (.500)
14	• 22-55-3140	22.83 (.899)	15.24 (.600)
16	• 22-55-3160	25.37 (.999)	17.78 (.700)
18	• 22-55-3180	27.91 (1.099)	20.32 (.800)
20	• 22-55-3200	30.45 (1.199)	22.86 (.900)
22	• 22-55-3220	32.99 (1.299)	25.40 (1.000)
24	• 22-55-3240	35.53 (1.399)	27.94 (1.100)
26	• 22-55-3260	38.07 (1.499)	30.48 (1.200)

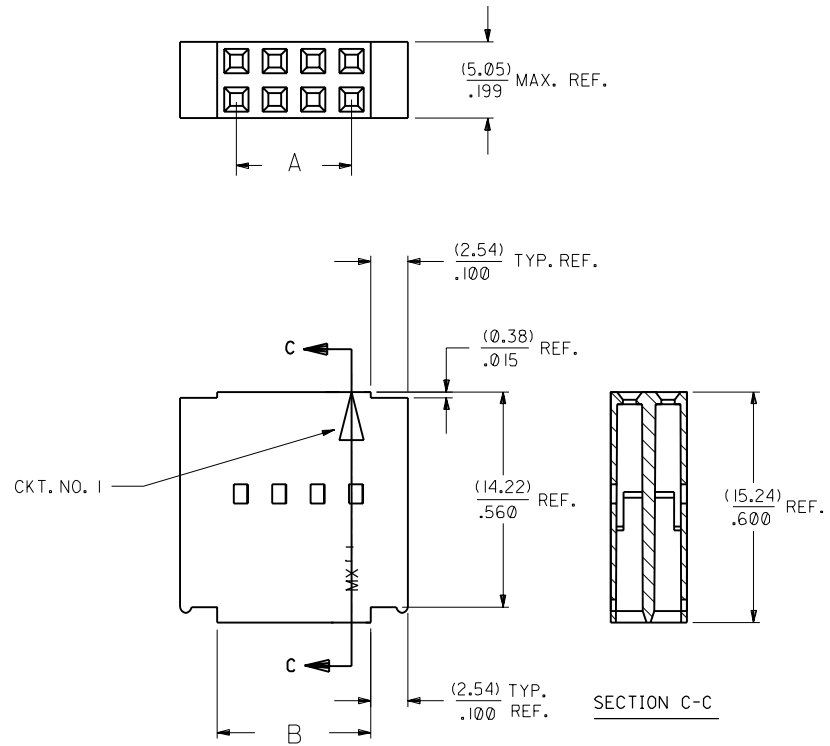
Circuits	Order No.	Dimension	
		A	B
28	• 22-55-3280	40.61 (1.599)	33.02 (1.300)
30	• 22-55-3300	43.15 (1.699)	35.56 (1.400)
32	• 22-55-3320	45.69 (1.799)	38.10 (1.500)
34	• 22-55-3340	48.23 (1.899)	40.64 (1.600)
36	• 22-55-3360	50.77 (1.999)	43.18 (1.700)
38	• 22-55-3380	53.31 (2.099)	45.72 (1.800)
40	• 22-55-3400	55.85 (2.199)	48.26 (1.900)
42	• 22-55-3420	58.39 (2.299)	50.80 (2.000)
44	• 22-55-3440	60.93 (2.399)	53.34 (2.100)
46	• 22-55-3460	63.47 (2.499)	55.88 (2.200)
48	• 22-55-3480	66.01 (2.599)	58.42 (2.300)
50	• 22-55-3500	68.55 (2.699)	60.96 (2.400)

• US Standard Product, available through Molex franchised distributors

NOTES:

- 1) MATERIAL: G.F. POLYESTER
- 2) HOUSING TO BE USED WITH TERMINALS
PT. NO. 70058-**** & 70028-****
- 3) TO BE USED WITH (0.64)/.025 SQ. OR RD. PINS.
- 4) REFER TO PRODUCT SPECIFICATION PS-70058.
- 5) PACKAGE PER PK-70450-100.

-OPTION "D"-



CKT. SIZE	EDP. NO.	ENG. NO.	A	B
4	022-55-3040	70450-0150	$(2.54) / .100$	$(5.05) / .199$
6	022-55-3060	70450-0151	$(5.08) / .200$	$(7.59) / .299$
8	022-55-3080	70450-0152	$(7.62) / .300$	$(10.13) / .399$
10	022-55-3100	70450-0153	$(10.16) / .400$	$(12.67) / .499$
12	022-55-3120	70450-0154	$(12.70) / .500$	$(15.21) / .599$
14	022-55-3140	70450-0155	$(15.24) / .600$	$(17.75) / .699$
16	022-55-3160	70450-0156	$(17.78) / .700$	$(20.29) / .799$
18	022-55-3180	70450-0157	$(20.32) / .800$	$(22.83) / .899$
20	022-55-3200	70450-0158	$(22.86) / .900$	$(25.37) / .999$
22	022-55-3220	70450-0159	$(25.40) / 1.000$	$(27.91) / 1.099$
24	022-55-3240	70450-0160	$(27.94) / 1.100$	$(30.45) / 1.199$
26	022-55-3260	70450-0161	$(30.48) / 1.200$	$(32.99) / 1.299$
28	022-55-3280	70450-0162	$(33.02) / 1.300$	$(35.53) / 1.399$
30	022-55-3300	70450-0163	$(35.56) / 1.400$	$(38.07) / 1.499$
32	022-55-3320	70450-0164	$(38.10) / 1.500$	$(40.61) / 1.599$
34	022-55-3340	70450-0165	$(40.64) / 1.600$	$(43.15) / 1.699$
36	022-55-3360	70450-0166	$(43.18) / 1.700$	$(45.69) / 1.799$
38	022-55-3380	70450-0167	$(45.72) / 1.800$	$(48.23) / 1.899$
40	022-55-3400	70450-0168	$(48.26) / 1.900$	$(50.77) / 1.999$
42	022-55-3420	70450-0169	$(50.80) / 2.000$	$(53.31) / 2.099$
44	022-55-3440	70450-0170	$(53.34) / 2.100$	$(55.85) / 2.199$
46	022-55-3460	70450-0171	$(55.88) / 2.200$	$(58.39) / 2.299$
48	022-55-3480	70450-0172	$(58.42) / 2.300$	$(60.93) / 2.399$
50	022-55-3500	70450-0173	$(60.96) / 2.400$	$(63.47) / 2.499$

DIMENSIONS SHOWN (METRIC) INCH UNLESS OTHERWISE SPECIFIED TOLERANCES: ANGULAR ± 1/2°		REVISIONS LTR. REVISIONS	
3 PLACE ± .010 2 PLACE ± .014 ± 0.25 1 PLACE --- ± 0.35	REVISIONS LTR. REVISIONS	REVISIONS LTR. REVISIONS	REVISIONS LTR. REVISIONS
DRAFT WHERE APPLICABLE MUST REMAIN WITHIN DIMENSIONS	DRWG. NO. SD-70450-0150-0173 FILE NAME S70450X4.DWG	DRWG. NO. SD-70450-0150-0173 U.S.A.	SHEET NO. 1 OF 1 DATE 10/22/86
DRWG. BY: MJM APP'D. BY: WAZ	CHK'D. BY: MJM SCALE: 4:1	REVISED PER U21702 92/11/20 RB REVISED PER ECN# U00293 8-15-90 MCB REVISED PER ECN UDT1999-0722 R.S.FOX 99/03/09 REVISED ECR NO. U00182 02-22-90 AAB	ADD PKG NOTE PER UDT2000-0468 SCHAFFER 99/12/1 REVISED PER ECN U00293 8-15-90 MCB REVISED ECR NO. U00182 02-22-90 AAB