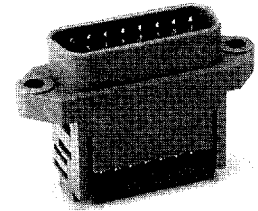


PLASTIC SHELL "D" CONNECTORS 9-37 POSITION PINS



PHYSICAL PROPERTIES

INSULATION MATERIAL: Glass filled thermoplastic rated UL 94V-0

COLOR: Blue

CONTACT MATERIAL: Beryllium copper; 30μ inches min. gold over 50μ inches min. nickel in contact zone; tin/lead over nickel in termination area.

ELECTRICAL PROPERTIES

CURRENT RATING: 1 Amp

INSULATION RESISTANCE: >1000 Megohms

DIELECTRIC STRENGTH: >1000 VRMS at sea level

ENVIRONMENTAL PROPERTIES

TEMPERATURE RATING: -55°C TO 125°C

APPLICATION TOOLING

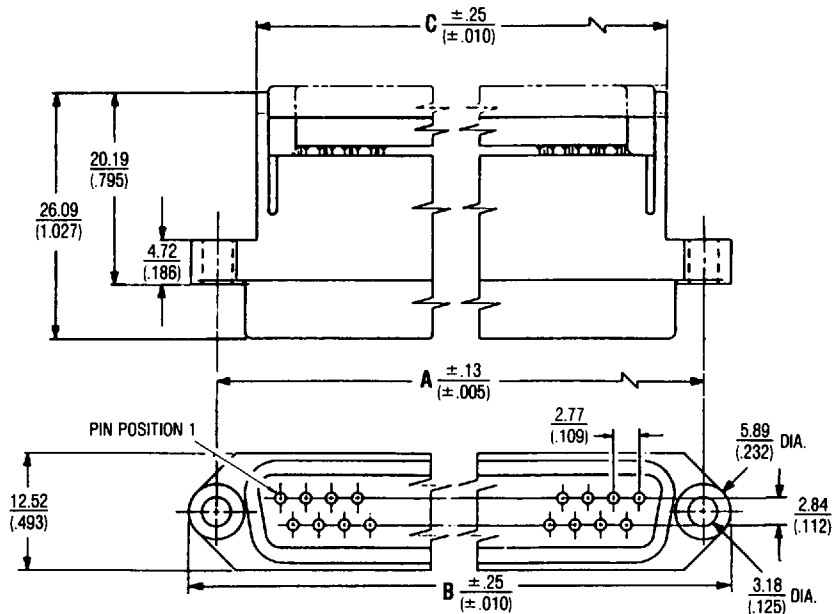
HAND TOOL	779-2166(9-37)
with Die	779-2167(50)
BENCH PRESS (MANUAL)	779-3200
with Platen	779-3139(9-37)
with Base Plate	779-3130(50)
BENCH PRESS (PNEUMATIC)	779-3500XT
with Platen	779-3166(9-37)
with Base Plate	779-3160(50)

ACCESSORIES

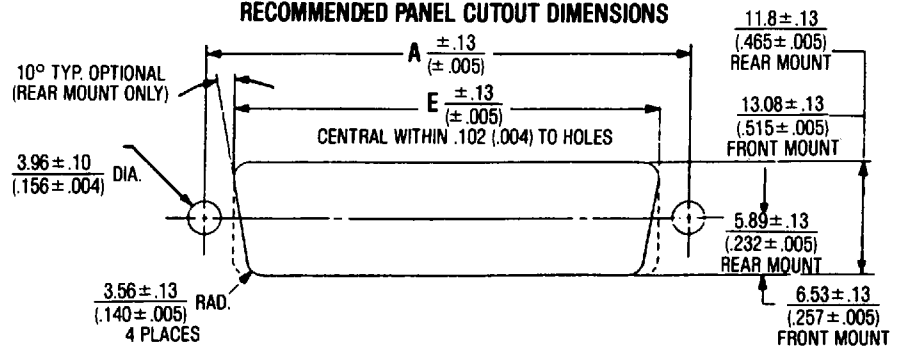
See page 80

CABLE

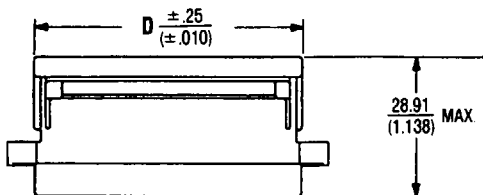
See pages 102-110



RECOMMENDED PANEL CUTOUT DIMENSIONS



CONNECTOR ASSEMBLY WITH STRAIN RELIEF



Ordering Information

CATALOG NUMBERS	NO. OF POS.	DIMENSIONS IN MM (INCHES)				
		A	B	C	D	E
609-9P	9	24.99 (.984)	30.89 (1.216)	16.23 (.639)	18.95 (.746)	19.46 (.766)
609-15P	15	33.32 (1.312)	39.22 (1.544)	24.54 (.966)	27.25 (1.073)	27.76 (1.093)
609-25P	25	47.04 (1.852)	52.93 (2.084)	38.38 (1.511)	41.02 (1.615)	41.61 (1.638)
609-37P	37	63.50 (2.500)	69.39 (2.732)	54.99 (2.165)	57.61 (2.268)	58.09 (2.287)