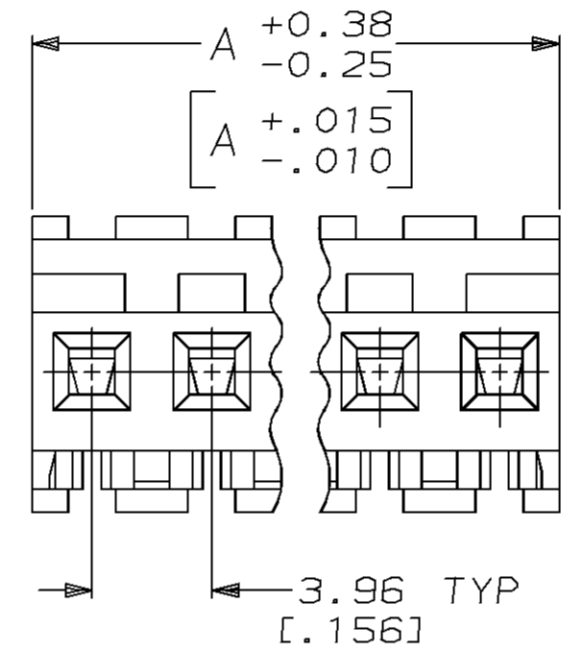
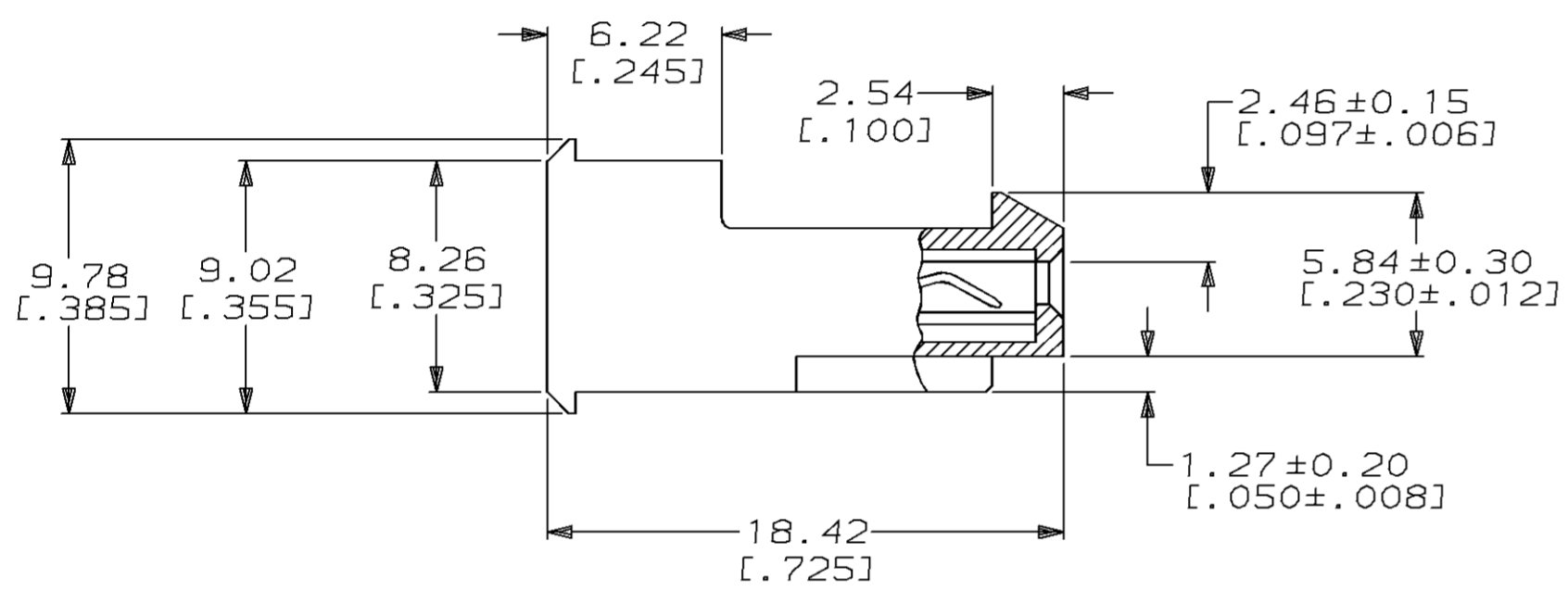
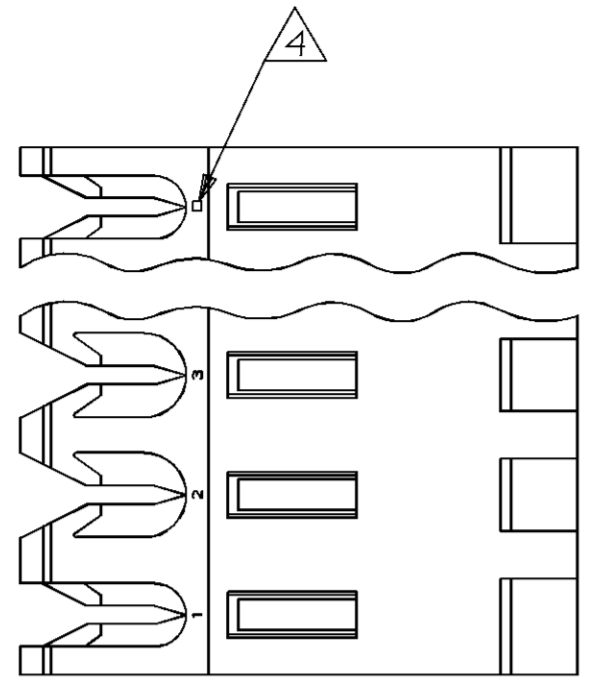


THIS DRAWING IS UNPUBLISHED. RELEASED FOR PUBLICATION, 19 .  
 © COPYRIGHT 19 BY AMP INCORPORATED. ALL INTERNATIONAL RIGHTS RESERVED.

LOC	DIST	P	F	ZONE	LTR	REVISIONS	DATE	APPD
CM	54				F	REACT -2 THRU -24 AND REV PER EC 0730-0242-95	3-11-96	BL RS



DIM A	NO OF CIRCUITS	PART NO	
95.10	[3.744]	24	2-641172-4
91.14	[3.588]	23	2-641172-3
87.17	[3.432]	22	2-641172-2
83.21	[3.276]	21	2-641172-1
79.25	[3.120]	20	2-641172-0
75.29	[2.964]	19	1-641172-9
71.32	[2.808]	18	1-641172-8
67.36	[2.652]	17	1-641172-7
63.40	[2.496]	16	1-641172-6
59.44	[2.340]	15	1-641172-5
55.47	[2.184]	14	1-641172-4
51.51	[2.028]	13	1-641172-3
47.55	[1.872]	12	1-641172-2
43.59	[1.716]	11	1-641172-1
39.62	[1.560]	10	1-641172-0
35.66	[1.404]	9	641172-9
31.70	[1.248]	8	641172-8
27.74	[1.092]	7	641172-7
23.77	[.936]	6	641172-6
19.81	[.780]	5	641172-5
15.85	[.624]	4	641172-4
11.89	[.468]	3	641172-3
7.92	[.312]	2	641172-2

- 1 MATERIAL: CONNECTOR - NYLON UL94V-2 (BLUE).  
CONTACTS - 0.30[.012] THICK COPPER ALLOY  
(0.00038 [.000015] GOLD)
- 2. CONTACTS ACCEPT 26 AWG WIRE WITH 2.41[.095] MAX INSULATION DIAMETER.
- 3. CONTACTS MUST ACCEPT 1.14±0.03[.045±.001] SQUARE POST AND REMAIN LOCKED IN POSITION.
- 4 IDENTIFICATION NUMBER FOR LAST CIRCUIT MAY NOT APPEAR ON ALL ASSEMBLIES.
- 5. DIMENSIONS IN BRACKETS ARE IN INCHES.
- 6. HOUSING FEATURES ARE: FEED-THRU WITH LOCKING RAMP.

**METRIC**

DO NOT SCALE PRINT. UNLESS SPECIFIED DIMENSIONS IN mm [INCHES] TOLERANCES ON : 2 PLC DEC ± - 3 PLC DEC ± 0.13 [.005] ANGLES ± -	DR 3-11-96 B. LEWIS CHK 3-11-96 R. SWING APPD 3-11-96 D. CLARK APPD 3-11-96 D. CLARK	<b>AMP</b> AMP Incorporated Harrisburg, PA 17105-3608	
MATERIAL	PRODUCT SPEC 108-1051	NAME MTA-156 CONNECTOR ASSEMBLY, 26 AWG, STANDARD	
FINISH	APPLICATION SPEC 114-1020	SIZE C	CAGE CODE 00779
	WEIGHT -	SCALE 4:1	DRAWING NO 641172
			SHEET 1 OF 1