

REVISION CA

DO NOT SCALE THIS DRAWING

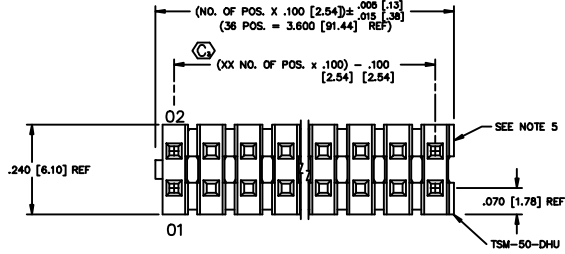
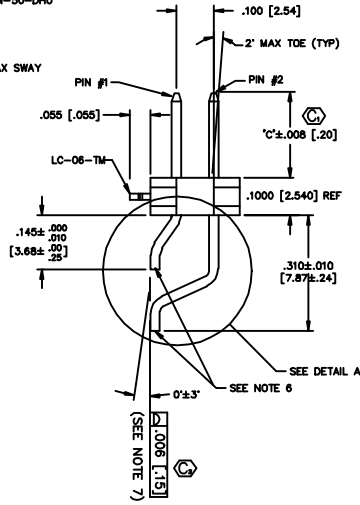
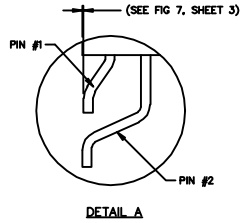


FIG. 1
-LC: LOCKING CLIP OPTION
CLIPS N/A WITH -A OPTION.

ROW OPTION	LEAD STYLE	BOTTOM ROW PIN #1	TOP ROW PIN #2	"C"
-DH	-01	T-156-09-X-2	T-156-20-X-2	.230 [5.84]
-DH	-02	T-156-09-X-2	T-156-20-X-2	.320 [8.13]
-DH	-03	T-156-09-X-2	T-156-20-X-2	.420 [10.67]
-DH	-04 (SEE NOTE 11)	T-156-09-X-2	T-156-20-X-2	.120 [3.05]
-MT	-01	T-156-08-X-2	T-156-20-X-2	.230 [5.84]
-MT	-02	T-156-15-X-2	T-156-20-X-2	.320 [8.13]
-MT	-03	T-156-09-X-2	T-156-20-X-2	.420 [10.67]



NOTES:

- ⊕ REPRESENTS A CRITICAL DIMENSION.
- DELETED
- DELETED
- DELETED
- .005 [.13] MAX CUT FLASH.
- .002 [.51] MAX BURR. MUST BE AWAY FROM SMT BOARD SIDE.
- DELETED
- CUT TO POSITION BODIES TO BE MULTI-CUT OR ROTO-CUT ONLY, NEVER AIR CUT.
- TUBE POSITIONS 5-36, BULK PACKAGE POSITIONS 2-4.
- 3 LBS. MIN PUSHOUT FORCE.
- 04 LEAD STYLE DOES NOT MATE WITH SSM-DH.
- ORIENTATION OF PART IN TAPE AND REEL TO BE CONTROLLED BY POCKET DESIGN.
- DUE TO THE HIGH AMOUNT OF INSERTION FORCE NEEDED, THE -LC OPTION IS NOT COMPATIBLE WITH AUTO PLACEMENT. SAMTEC RECOMMENDS MANUAL PLACEMENT FOR ALL ASSEMBLIES WITH THE -LC OPTION.
- SS OPTION ONLY AVAILABLE IN LEAD STYLE -01 AND CAN ONLY MATE WITH SSW, SSO, SSM, ESW, ESQ AND BCS.

ONE PLACE DECIMALS ± .1 [3] TWO PLACE DECIMALS ± .01 [3]	THREE PLACE DECIMALS ± .005 [0.13] FOUR PLACE DECIMALS ± .0020 [0.051]	ANGLES ± 2'	TITLE: TERMINAL SRTP DOUBLE SURFACE MOUNT	DWG NO.: TSM-1XX-XX-XXX-XX-XX-XXX-XX
---	---	-------------	---	--------------------------------------

TSM-1XX-XX-XXX-XX-XX-XXX-XX

NO. OF POSITIONS
-02 THRU -36

LEAD STYLE
(SEE TABLE 1)

PLATING SPEC.

- T: MATTE TIN, CONTACT AND TAIL
- S: SELECTIVE, 30 Au / 50 NI MIN ON CONTACT, MATTE TIN TAIL
- L: LIGHT SELECTIVE, 10 Au / 50 NI MIN ON CONTACT, MATTE TIN TAIL
- F: FLASH SELECTIVE, 3 Au / 50 NI MIN ON CONTACT, MATTE TIN TAIL
- H: HEAVY GOLD, 30 Au 50 NI MIN ON CONTACT, 3 Au / 50 NI MIN ON TAIL
- TL: TIN/LEAD (90/10+/-5%) CONTACT AND TAIL
- STL: SELECTIVE, 30 Au / 50 NI MIN ON CONTACT, TIN/LEAD (90/10+/-5%) TAIL
- SM: SELECTIVE, 30 Au / 50 NI MIN ON CONTACT, MATTE TIN TAIL
- LM: LIGHT SELECTIVE, 10 Au / 50 NI MIN ON CONTACT, MATTE TIN TAIL
- FM: FLASH SELECTIVE, 3 Au / 50 NI MIN ON CONTACT, MATTE TIN TAIL
- TM: MATTE TIN CONTACT AND TAIL
- SS: STRIPED SELECTIVE, 30 Au / 50 NI MIN ON CONTACT, MATTE TIN TAIL (SEE NOTE 14)

ROW OPTION

- DH: DOUBLE HORIZONTAL (USE TSM-50-DHU)
- MT: MIXED TECHNOLOGY (SEE FIG. 4 & TABLE 1) (NOT AVAILABLE WITH -LC, -SL, -TR OR -A OPTIONS)

OPTION #1

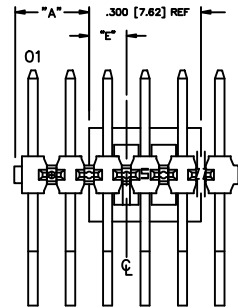
- LC: LOCKING CLIP (USE LC-06-TM - SEE FIG. 1) (SEE NOTE 13) (03-36 POS USE 2 PER STRIP, 02 POS USE 1 PER STRIP) (USE TSM-XX-DHU) (NOT AVAILABLE WITH -A OR -SL OPTIONS)
- A: ALIGNMENT PIN (SEE FIG. 2, SHT. 2) (STAKED: 4 POS MIN) (MOLDED: 2 POS MIN) (NOT AVAILABLE WITH -LC OR -SL OPTIONS) (LEAVE BLANK FOR NO HOLD DOWN OPTION.)
- SL: SOLDER LOCK (SEE FIG. 6, SHT. 2) (2 POSITION MINIMUM) (NOT AVAILABLE WITH -LC OR -A OPTIONS)

NO OF POS	S/S BOW
02 - 10	.0030 [0.080]
11 - 20	.0050 [0.127]
21 - 30	.0070 [0.178]
31 - 36	.0080 [0.203]

DIFFERENT AS SHOWN, OTHERWISE SAME AS FIG. 1.

FOR EVEN: "A" = $\frac{(\text{NO. OF POS.} \times .100 [2.54]) - .300 [7.62]}{2} + .050 [1.27]$

FOR ODD: "A" = $\frac{(\text{NO. OF POS.} \times .100 [2.54]) - .300 [7.62]}{2}$



POS.	"E"
ODD	.150 [3.81]
EVEN	.100 [2.54]

FIG. 3
-P: PICK & PLACE PAD
PLACE PPP-08 ON ⊕ AS SHOWN

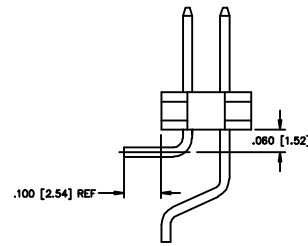
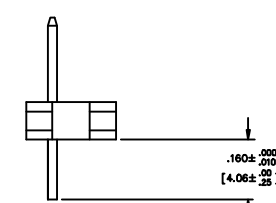
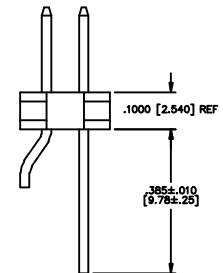


FIG. 4
-MT: MIXED TECHNOLOGY
DIFFERENT AS SHOWN,
OTHERWISE SAME AS FIG. 1
(SEE NOTE 7)

IN-PROCESS 1



IN-PROCESS 2



PROPRIETARY NOTE
THIS DRAWING IS THE PROPERTY OF SAMTEC CORPORATION AND IS NOT TO BE REPRODUCED OR TRANSMITTED IN ANY FORM OR BY ANY MEANS, ELECTRONIC OR MECHANICAL, INCLUDING PHOTOCOPYING, RECORDING, OR BY ANY INFORMATION STORAGE AND RETRIEVAL SYSTEM. SAMTEC CORPORATION IS NOT RESPONSIBLE FOR ANY DAMAGE TO PROPERTY OR PERSONS ARISING FROM THE USE OF THIS DRAWING.

MATERIAL:
INSULATOR:
LIQUID CRYSTAL POLYMER
COLOR: BLACK
TERMINALS:
PHOSPHOR BRONZE

EXISPROD\ASSEMBLY\100 TSM0H
samtec
520 PARK EAST BLDG. NEW ALBANY, INDIANA 47150
PHONE (812) 944-8733 P.O. BOX 1147
CODE 56322

DATE: BRATCHER 7-27-95 TSM-1XX-XX-XXX-XX-XX-XXX-XX SHEET 1 OF 3

NOTE: "R" = USED MEASURED DIMENSION (REF)
 "S" = $\{("R" - .1969 [5.000]) / 2\} \pm .020 [51]$

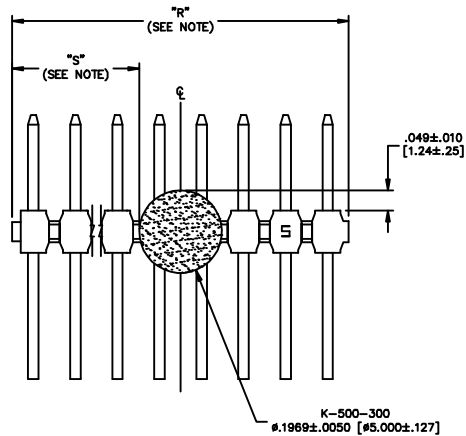
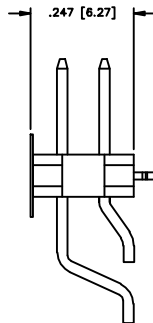
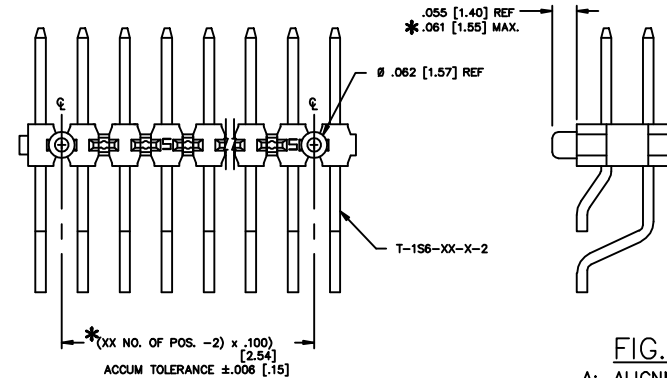


FIG. 5
 -K: POLYIMIDE FILM
 DIFFERENT AS SHOWN, OTHERWISE
 SAME AS FIG. 1.



DIMENSIONS ARE IN INCHES		UNLESS OTHERWISE NOTED		TOLERANCES ARE:		TITLE	DWG NO:
ONE PLACE DECIMALS ± .1 [3]	THREE PLACE DECIMALS ± .005 [13]	ANGLES	± 2°			TERMINAL STRIP DOUBLE SURFACE MOUNT	TSM-XX-XX-XX-XX-XX-XX SHEET 2 OF 3
TWO PLACE DECIMALS ± .01 [3]	FOUR PLACE DECIMALS ± .0020 [51]						



DIFFERENT AS SHOWN, OTHERWISE
 SAME AS FIG. 1.

FIG. 2

-A: ALIGNMENT PIN
 ALIGNMENT PINS APPEAR ON -A OPTION ONLY.
 * STAKED: USE (2) SM-A10H AND TSM-50-DHU
 (CAN BE CUT TO POSITION)
 NOT STAKED: USE TSM-XX-DHU-XX
 (CAN BE CUT TO POSITION)

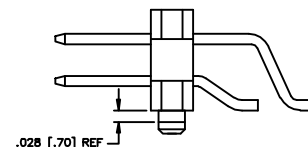
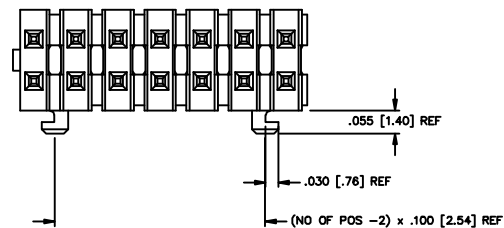
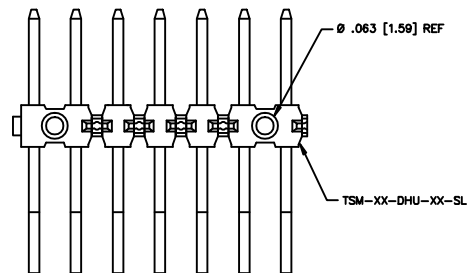


FIG. 6

-SL: SOLDER LOCK

DIFFERENT AS SHOWN, OTHERWISE
 SAME AS FIG. 1.



PROPRIETARY NOTE
 THE INFORMATION CONTAINED
 HEREIN IS THE PROPERTY OF
 SAMTEC CORPORATION AND IS
 TO BE USED ONLY FOR THE
 PURPOSES SPECIFIED IN THE
 ORDER. IT IS NOT TO BE
 REPRODUCED OR TRANSMITTED
 IN ANY FORM OR BY ANY
 MEANS, ELECTRONIC OR
 MECHANICAL, INCLUDING
 PHOTOCOPYING, RECORDING,
 OR BY ANY INFORMATION
 STORAGE AND RETRIEVAL
 SYSTEMS, WITHOUT THE
 WRITTEN PERMISSION OF
 SAMTEC CORPORATION.

EXISPROD\ASSEMBLY\100
 TSM2H2

samtec

520 PARK EAST BLDG. NEW ALBANY, INDIANA 47150
 PHONE (812) 944-6733 P.O. BOX 1147
 CODE 65322

MADE BY: BRATONER 7-27-95

TSM-XX-XX-XX-XX-XX-XX
 SHEET 2 OF 3

REV. CA

DIMENSIONS ARE IN INCHES		UNLESS OTHERWISE NOTED	TOLERANCES ARE:	TITLE	DWG. NO.
ONE PLACE DECIMALS ± .1 [.3]	TWO PLACE DECIMALS ± .01 [.3]	THREE PLACE DECIMALS ± .005 [.13]	FOUR PLACE DECIMALS ± .0020 [.051]	TERMINAL STRIP DOUBLE SURFACE MOUNT	TSM-XX-XX-XX-XX-XX-XX SHEET 3 OF 3
			ANGLES		
			± 2°		

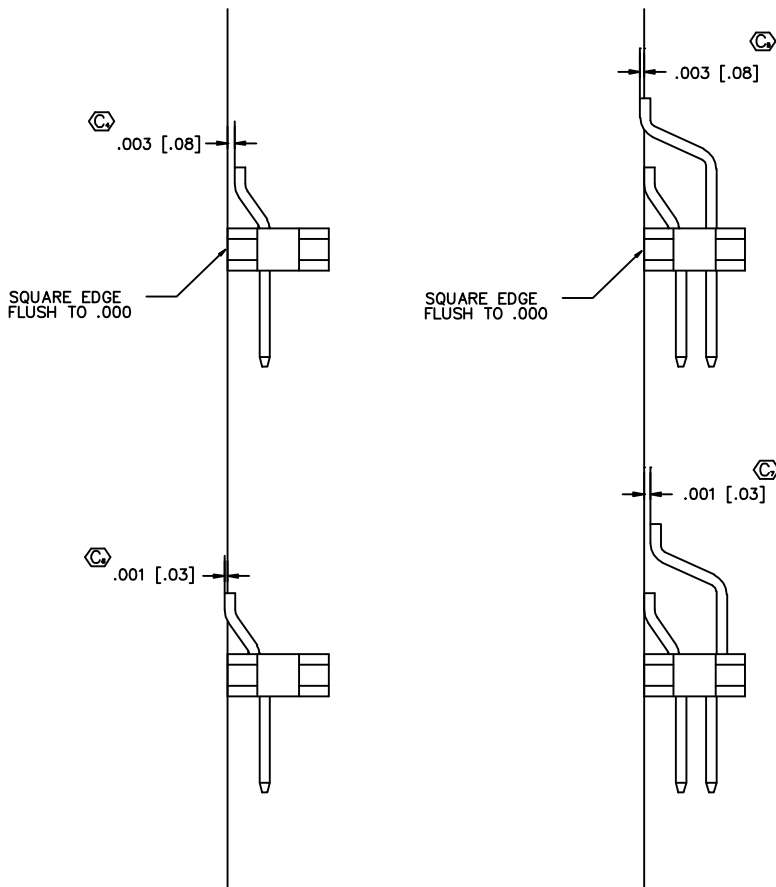
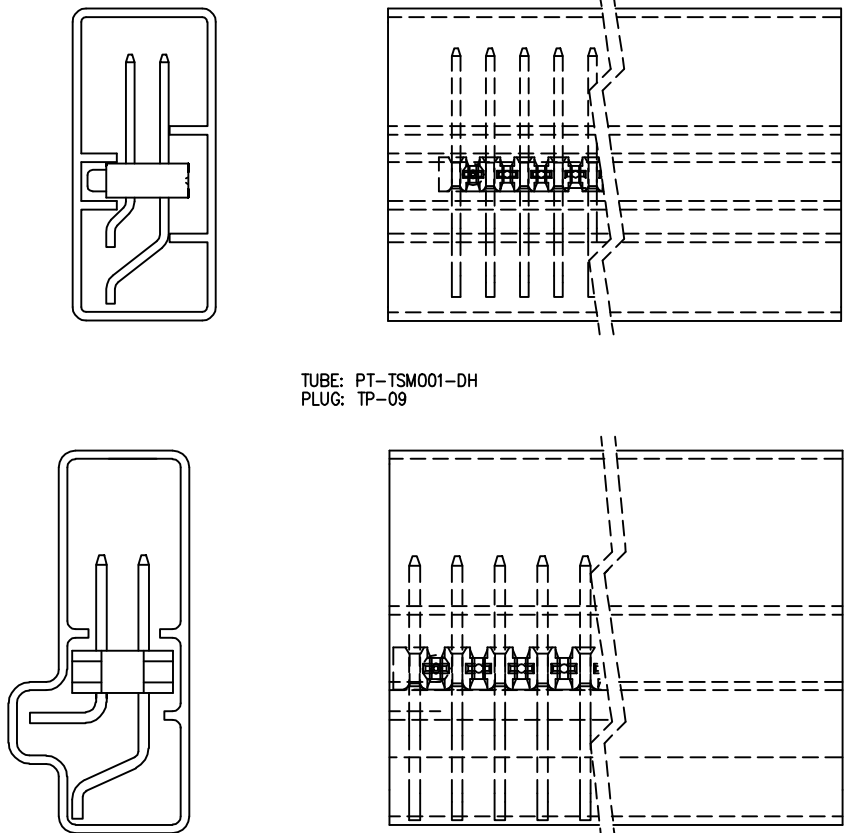


FIG. 7
-DH SURFACEMOUNT DIAGRAM

PROPRIETARY NOTE
THIS DOCUMENT CONTAINS PROPRIETARY INFORMATION OF SAMTEC. IT IS THE PROPERTY OF SAMTEC AND IS NOT TO BE REPRODUCED, COPIED, OR DISSEMINATED IN ANY MANNER WITHOUT THE WRITTEN PERMISSION OF SAMTEC.

PACKAGE AS SHOWN
SCALE .75



TUBE: PT-TSM001-DH
PLUG: TP-09

-MT OPTION
TUBE: PT-TSM005-DH-MT
PLUG: TP-29

EXISPROD\ASSEMBLY\100
TSM0H3

samtec

520 PARK EAST BLDG. NEW ALBANY, INDIANA 47150
PHONE (812) 944-8733 P.O. BOX 1147
CODE 68322

DATE BY: BRATCHER 7-27-95

TSM-XX-XX-XX-XX-XX-XX
SHEET 3 OF 3