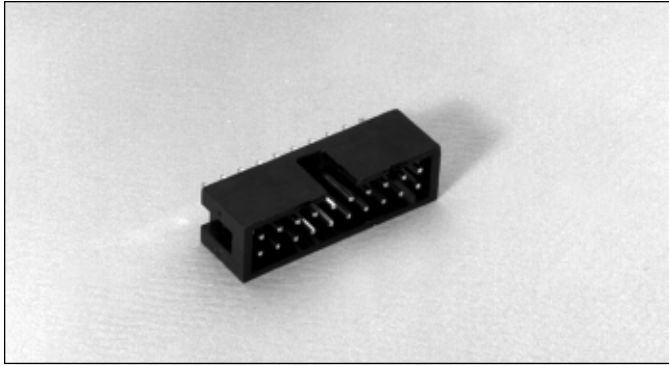


.100" (2.54mm) Dual Row, Through Hole, Vertical Polarizing Shrouded Header



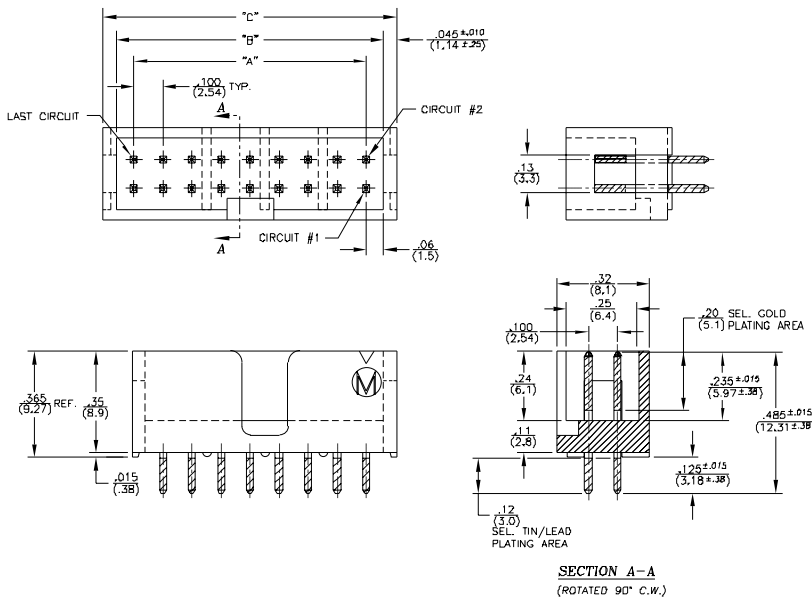
9100 SERIES ("POST/BOXE")

PART NUMBER LEGEND

91XX-40-2XX-01

- NUMBER OF POSITIONS (SEE TABLE)
- PIN PLATING (SEE NOTE 2)
- INSULATOR MATERIAL (SEE NOTE 1)

MATING CONNECTORS: 9000 SERIES & 9300-6XX/7XX SERIES



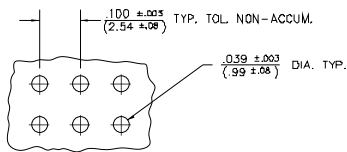
NOTES:

1) MATERIALS

- INSULATOR
- 9100-40-2XX-01: POLYESTER (PBT), 30% CLASS FILLED, UL94V-0
- 9110-40-2XX-01: POLYESTER (PCT), 30% CLASS FILLED, UL94V-0
- PINS: PHOSPHOR BRONZE

2) PIN FINISH:

- 91X0-40-2XX-01: BRUTE TIN OVER NICKEL PLATE
- 91X8-40-2XX-01: .000050 NICKEL PLATE ALL OVER; .000030 SEL. GOLD IN MATING AREA; .0001-.0002 SEL. TIN/LEAD ON SOLDER TAIL
- 91X9-40-2XX-01: .000050 NICKEL PLATE ALL OVER; .000015 SEL. GOLD IN MATING AREA; .0001-.0002 SEL. TIN/LEAD ON SOLDER TAIL



RECOMMENDED P.C. BOARD LAYOUT

PART NUMBER	NO. OF POSITIONS	DIM "A"	DIM "B"	DIM "B"
91XX-40-222-01	4	.100 (2.54)	.220 (5.59)	.310 (7.87)
↑ -203	6	.200 (5.08)	.320 (8.13)	.410 (10.41)
-204	8	.300 (7.62)	.420 (10.67)	.510 (12.95)
-205	10	.400 (10.16)	.520 (13.21)	.610 (15.49)
-206	12	.500 (12.70)	.620 (15.75)	.710 (18.03)
-207	14	.600 (15.24)	.720 (18.29)	.810 (20.57)
-208	16	.700 (17.78)	.820 (20.83)	.910 (23.31)
-209	18	.800 (20.32)	.920 (23.37)	1.010 (25.65)
-210	20	.900 (22.86)	1.020 (25.91)	1.110 (28.19)
-211	22	1.000 (25.40)	1.120 (28.45)	1.210 (30.73)
-212	24	1.100 (27.94)	1.220 (30.99)	1.310 (33.27)
-213	26	1.200 (30.48)	1.320 (33.53)	1.410 (35.81)
-214	28	1.300 (33.02)	1.420 (36.07)	1.510 (38.35)
-215	30	1.400 (35.56)	1.520 (38.61)	1.610 (40.89)
-216	32	1.500 (38.10)	1.620 (41.15)	1.710 (43.43)
-217	34	1.600 (40.64)	1.720 (43.69)	1.810 (45.97)
-218	36	1.700 (43.18)	1.820 (46.23)	1.910 (48.51)
-219	38	1.800 (45.72)	1.920 (48.77)	2.010 (51.05)
↑ -220	40	1.900 (48.26)	2.020 (51.31)	2.110 (53.59)
91XX-40-221-01	42	2.000 (50.80)	2.120 (53.85)	2.210 (56.13)

PART NUMBER	NO. OF POSITIONS	DIM "A"	DIM "B"	DIM "B"
91XX-40-222-01	44	.100 (2.54)	.220 (5.59)	.310 (7.87)
↑ -223	46	.200 (5.08)	.320 (8.13)	.410 (10.41)
-224	48	.300 (7.62)	.420 (10.67)	.510 (12.95)
-225	50	.400 (10.16)	.520 (13.21)	.610 (15.49)
-226	52	.500 (12.70)	.620 (15.75)	.710 (18.03)
-227	54	.600 (15.24)	.720 (18.29)	.810 (20.57)
-228	56	.700 (17.78)	.820 (20.83)	.910 (23.31)
-229	58	.800 (20.32)	.920 (23.37)	1.010 (25.65)
-230	60	.900 (22.86)	1.020 (25.91)	1.110 (28.19)
-231	62	1.000 (25.40)	1.120 (28.45)	1.210 (30.73)
-232	64	1.100 (27.94)	1.220 (30.99)	1.310 (33.27)
-233	66	1.200 (30.48)	1.320 (33.53)	1.410 (35.81)
-234	68	1.300 (33.02)	1.420 (36.07)	1.510 (38.35)
-235	70	1.400 (35.56)	1.520 (38.61)	1.610 (40.89)
-236	72	1.500 (38.10)	1.620 (41.15)	1.710 (43.43)
-237	74	1.600 (40.64)	1.720 (43.69)	1.810 (45.97)
-238	76	1.700 (43.18)	1.820 (46.23)	1.910 (48.51)
↑ -239	78	1.800 (45.72)	1.920 (48.77)	2.010 (51.05)
91XX-40-240-01	80	1.900 (48.26)	2.020 (51.31)	2.110 (53.59)