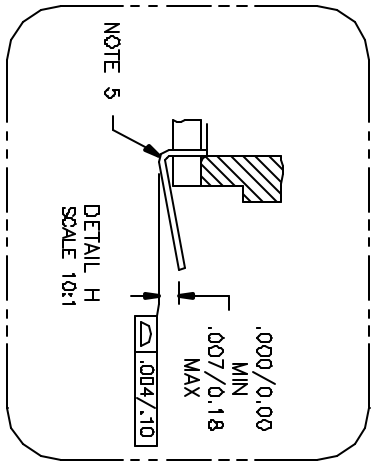
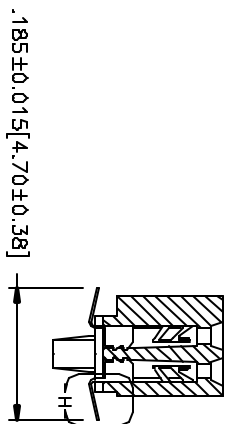
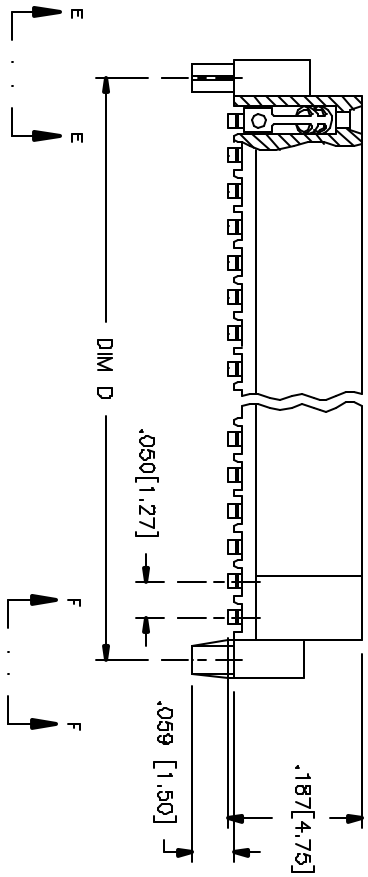
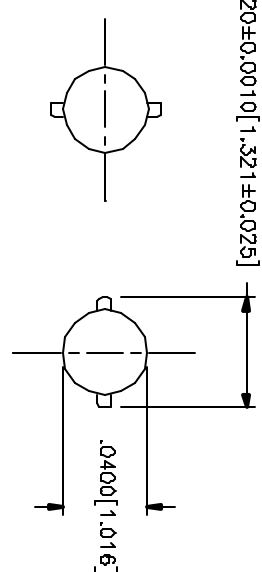
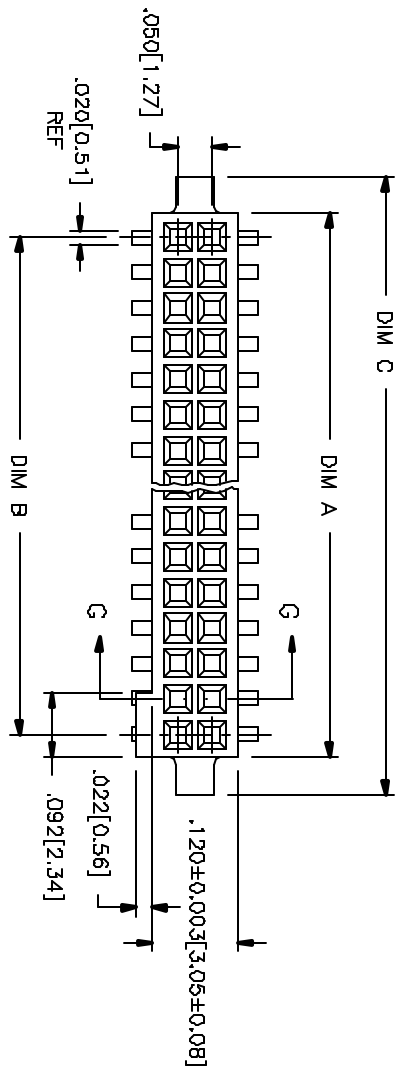




PRODUCT NUMBER
SEE TABLE



mat'l. code	dr	date	tolerances unless otherwise specified	CUSTOMER COPY	title	product family	code
A	V81341	EPK	7/28/98	linear	.XX ±.01 / .XX ±.3	INCH/MM	4:1
B	V80004	GAH	1/7/98	linear	.XXX ±.005 / .XX ±.13	INCH/MM	4:1
C	V02780	DLW	12/1/00	angles	0° ± 2°	INCH/MM	4:1
D	V1D984	DLW	3/9/01	dr	E. KR3PLEMCK7/28/98	INCH/MM	4:1
E	V11674	CRG	6/22/01	eng	D. WHITING 7/28/98	INCH/MM	4:1
				chr	D. WHITING 7/28/98	INCH/MM	4:1
				appr	D. WHITING 7/28/98	INCH/MM	4:1
sheet	revision	E	E				
index	sheet	1	2				

ACAD

3

page code
22526

4



PRODUCT NUMBER	SIZE	DIM A	DIM B	DIM C	DIM D	TAPE WIDTH / PITCH	PIECES PER REEL	NOTE
84899-605	2 X 6	.266/8.76	.200/5.08	.370/9.40	.3200/8.128			
-610	2 X 10	.516/13.11	.450/11.43	.820/15.75	.5700/14.478			NOTE 6
-615	2 X 15	.766/19.46	.700/17.78	.870/22.10	.8200/20.828			
-620	2 X 20	1.016/25.81	.950/24.13	1.120/28.45	1.0700/27.178	44mm/12mm	500	NOTE 7
-625	2 X 25	1.266/32.16	1.200/30.48	1.370/34.80	1.3200/33.528	56mm/12mm		
-630	2 X 30	1.516/38.51	1.450/36.83	1.820/41.15	1.5700/39.878			
-635	2 X 35	1.766/44.86	1.700/43.18	1.870/47.50	1.8200/46.228			
-640	2 X 40	2.016/51.21	1.950/49.53	2.120/53.85	2.0700/52.578			
-645	2 X 45	2.266/57.56	2.200/55.88	2.370/60.20	2.3200/58.928			NOTE 6
84899-650	2 X 50	2.516/63.91	2.450/62.23	2.820/71.88	2.5700/65.278			

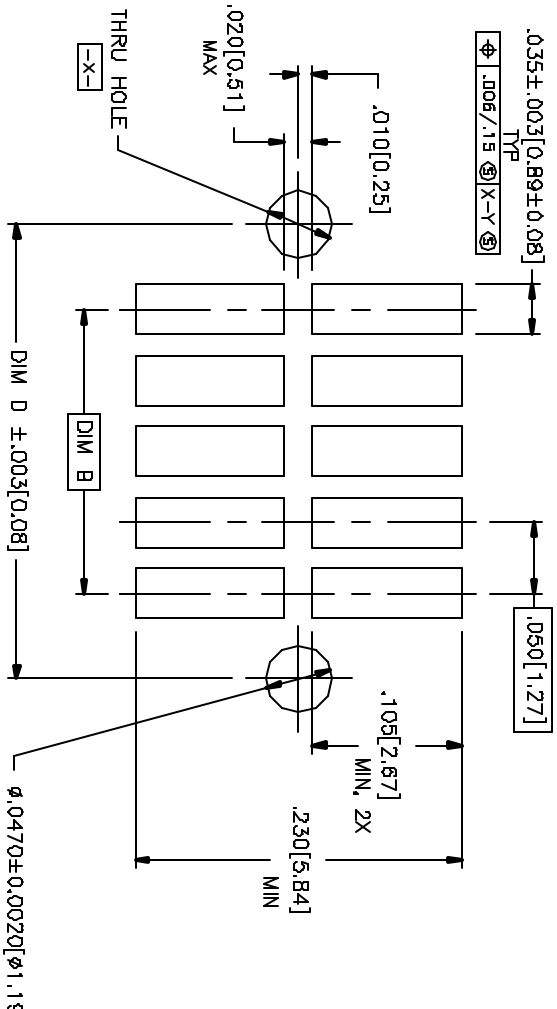


FIGURE A
RECOMMENDED
P.C.B. LAYOUT

NOTES:

- HOUSING MATERIAL : GLASS FILLED, THERMOPLASTIC FLAME RETARDANT PER UL 94V-0 COLOR: BLACK
- TERMINAL MATERIAL : BeCu
- TERMINAL PLATING : MIN HARD GOLD OVER Ni ON CONTACT ZONES. 6XX *30u/.76u MIN TIN LEAD OVER Ni IN SOLDERING ZONES. 100u/.254u MIN TIN LEAD OVER Ni IN SOLDERING ZONES. OTHERWISE GOLD FLASH OR UNPLATED.
- APPLICATION INFORMATION :
 - RECOMMENDED MOUNTING PAD PATTERN IS SHOWN IN FIGURE "A".
 - MATING PINS TO BE .0176/.447 TO .0181/.459 THICK.
 - MATING PIN TIPS TO BE IN TRUE POSITION TO MATING GRID WITHIN .006/.15 DIA.
 - SUGGESTED MATING PIN LENGTH: 1.30/3.30 ±.010/.25.
- LEAD TIPS TO BE ABOVE HEEL UP TO .007/.18 MAX. COMPLIANT TO BE MEASURED AT LOWEST POINT (HEEL).
- ADD "CT" TO END OF DASH NUMBER FOR CONNECTOR WITH VACUUM CAP IN TUBE.
- ADD "TR" TO END OF DASH NUMBER FOR CONNECTOR IN TAPE AND REEL WITH CAP. TOOLED ONLY FOR NOTED CONNECTORS.

mat'l. code		tolerances unless otherwise specified		CUSTOMER COPY		FCI Electronics	
ht	ser no	dr	date	linear	projection	title	www.fciconsult.com
E				.XX ±.01 / .XX ±.3	φ	050/1.27 cc V.C.C. SURFACE MT.	
				.XXX ±.005 / .XXX ±.13	⊖	W/ SPECIAL HOLLOWDOWN	
				.xxx ±.000 / .xxx ±.051	⊕	product family: RIBCAGE	
				angles 0° ±Z	INCH/MM	size dwg no: 84899	
				dr E. KRÖPPLIN/KK/7/28/98	scale B:1	code	
				eng D. WHITING 7/28/98		sheet 2 of	
				chr D. WHITING 7/28/98			
				appr D. WHITING 7/28/98			
sheet	revision						
index	sheet						