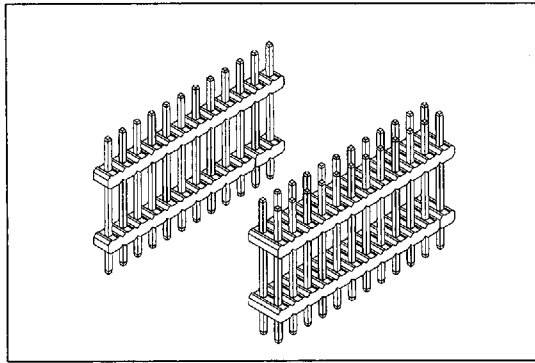


2113 SERIES

PIN HEADER 2.0mmX2.0mm(0.079"X0.079")



Material:

Housing: High temperature housing withstands IR and VPR soldering methods.

Contacts: Brass

Plating: Gold plated: $5\mu''$ over $50\mu''$ nickel.
Tin plated: $150\mu''$ over $70\mu''$ nickel.

Electrical Characteristics:

Current Rating: 1 AMP

Insulator Resistance: $5000M \Omega$ min. at DC 500V

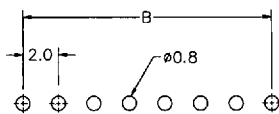
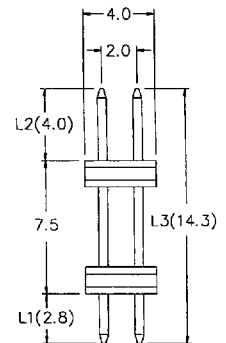
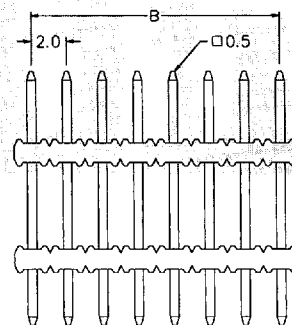
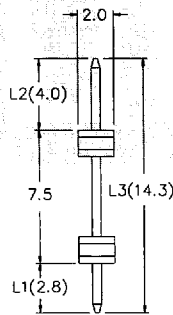
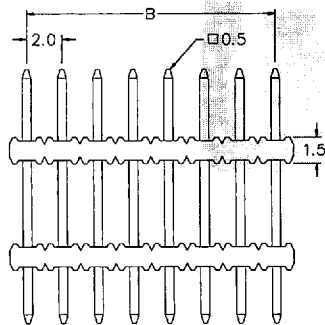
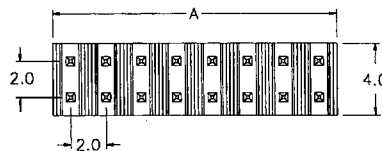
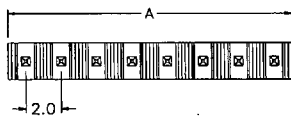
Contact Resistance: $20m \Omega$ max. at DC 100mA

Operating Temperature: $-65^{\circ}C \sim +125^{\circ}C$

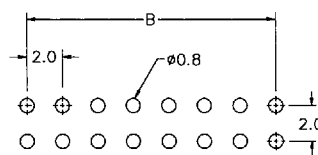
Features:

- * Low profile insulator 1.50mm (0.059")
- * Available in both Single and Double row.
- * Available in Straight.
- * Dual insulators offer high versatility and strength.

Mates with: 1101,2106,2141,2142,2143,2144,2148.



P.C. Board Layout



P.C. Board Layout

Position	2 Thru 40
Dimension	4 Thru 80
A	2.0 X No. of Positions
B	2.0 X No. of Positions - 2.0

Ordering information

2113-1 X 40 G S
 Series Single Row No. of G: Gold Plated S: Straight
 Double Row Pin Per Row T: Tin Plated

Custom Design: Straight (i.e. 2113- 1 X 40 G S / L1 / L2/ L3)

- L1: Dip Length
- L2: Mating length
- L3: Overall length