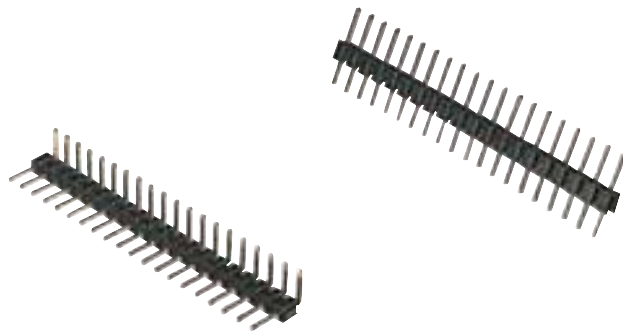


### Stifflisten, Raster 2.00, Einreihig Pin Header, Pitch 2.00, Single Row


**Isolierkörper**

Polyester, UL 94V-0

**Kontakte**

Messing

**Strombelastbarkeit**

1A

**Isolationswiderstand**

min 5000 MΩ

**Spannungsfestigkeit**

500 V AC

**Betriebstemperatur**

-40°C bis +105°C

**Insulator**

Polyester, UL 94V-0

**Contacts**

Brass

**Current rating**

1A

**Insulation resistance**

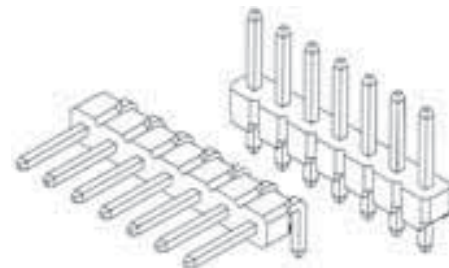
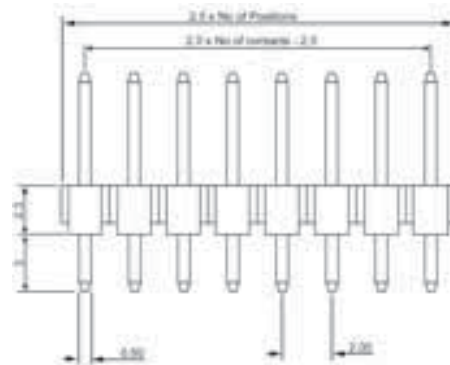
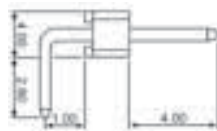
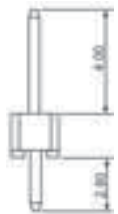
min 5000 MΩ

**Tensile strength**

500 V AC

**Operating temperature**

-40°C bis +105°C


 Bestellcode: **A** - **SL200** - **E** - **x** - **x** - **x** - **D**  
 Ordercode :

 Bitte „x“ durch die unten geeignete Option ersetzen  
 Please replace „x“ with appropriate option listed below

1. 2. 3.

1.

**Ausführung**

 G -gerade  
 A -abgewinkelt

**Version**

 G -straight  
 A -right angled

2.

**Oberfläche**

 G -flash vergoldet \*  
 Z -verzinkt  
 S -selektiv

**Contact plating**

 G -gold flash \*  
 Z -tinned  
 S -selective

3.

**Polzahl**

02 - 40

**Number of contacts**

02 - 40

\* Standard