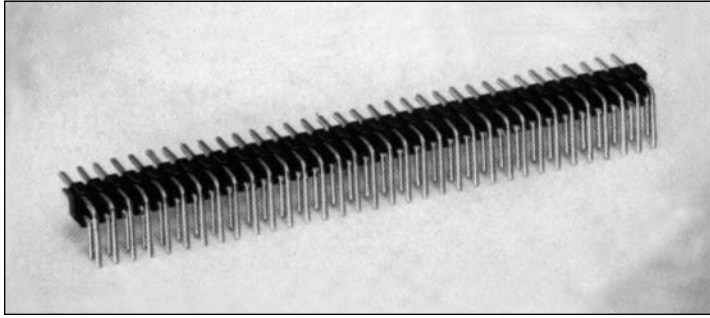


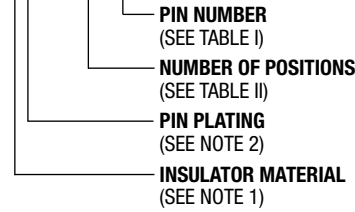
.100" (2.54mm) Single Row, Through Hole, Right Angle Header



9100 SERIES ("POST/BOXE")

PART NUMBER LEGEND

91XX-3-1XX-XX



MATING CONNECTORS: 9000 SERIES

NOTES:

- INSULATOR MAT'L:
910X- POLYESTER (PET), 30% C/R, UL 94V-0
COLOR: BLACK
911X- POLYESTER (PCT), 30% G/R, UL 94V-0
COLOR: BLACK
PIN MAT'L: PHOSPHOR BRONZE
- PIN FINISH:
91XQ- .000150/.0003 BRITTE TIN PLATE OVER .000050/.000100 NICKEL PLATE.
91X2- .000015 MIN. GOLD PLATE OVER .000050/.000150 NICKEL PLATE.
91X8- .000030 SELECTIVE GOLD PLATE IN CONTACT AREA OVER .000050/.000150 NICKEL PLATE ALL OVER;
.0001-.0002 SEL. 90/10 TIN LEAD ON SOLDER TAILS AS INDICATED.
91XE- .000150/.000250 90/10 TIN/LEAD OVER .00005/.000150 NICKEL PLATE.
91XF- .000015 SELECTIVE GOLD PLATE IN CONTACT AREA OVER .000050/.000150 NICKEL PLATE ALL OVER;
.0001-.0002 SEL. 90/10 TIN LEAD ON SOLDER TAILS AS INDICATED.
- ALL DIMENSIONS ARE IN IN./ (MM)
- PIN RETENTION: 2 LB. MINIMUM.

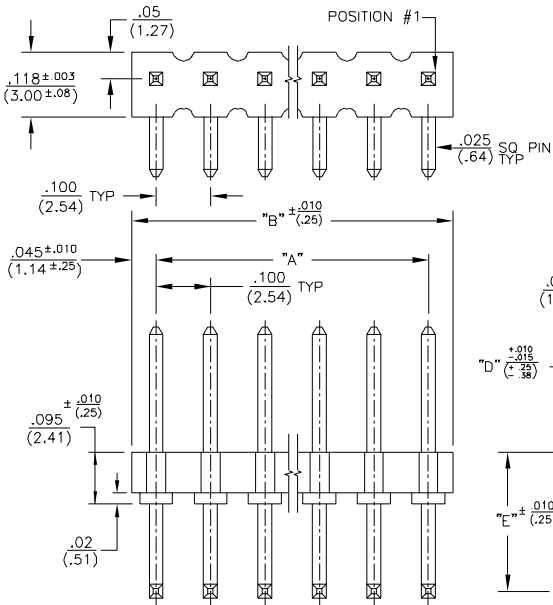


FIGURE I
(FOR OVERALL PLATED PINS ONLY)
P/N'S 91XQ AND 91X2-3-1XX-XX

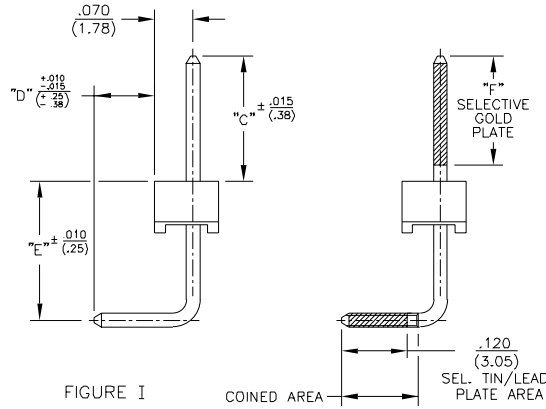
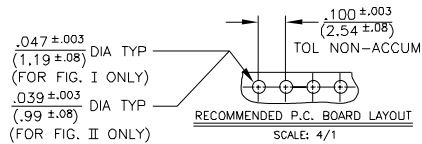


FIGURE II
(FOR SEL PLATED PINS ONLY)
P/N'S 91X8 AND 91XF-3-1XX-XX
(OTHERWISE SAME AS FIGURE I)



PART NUMBER	NO. OF POSITIONS	DIM. "A"	DIM. "B"
91XX-3-102-XX	2	.100/(2.54)	.190/(4.83)
↑ -103- ↓	3	.200/(5.08)	.290/(7.37)
↑ -104- ↓	4	.300/(7.62)	.390/(9.91)
↑ -105- ↓	5	.400/(10.16)	.490/(12.45)
↑ -106- ↓	6	.500/(12.70)	.590/(14.99)
↑ -107- ↓	7	.600/(15.24)	.690/(17.53)
↑ -108- ↓	8	.700/(17.78)	.790/(20.07)
↑ -109- ↓	9	.800/(20.32)	.890/(22.61)
↑ -110- ↓	10	.900/(22.86)	.990/(25.15)
↑ -111- ↓	11	1.000/(25.40)	1.090/(27.69)
↑ -112- ↓	12	1.100/(27.94)	1.190/(30.23)
↑ -113- ↓	13	1.200/(30.48)	1.290/(32.77)
↑ -114- ↓	14	1.300/(33.02)	1.390/(35.31)
↑ -115- ↓	15	1.400/(35.56)	1.490/(37.85)
↑ -116- ↓	16	1.500/(38.10)	1.590/(40.39)
↑ -117- ↓	17	1.600/(40.64)	1.690/(42.93)
↑ -118- ↓	18	1.700/(43.18)	1.790/(45.47)
↑ -119- ↓	19	1.800/(45.72)	1.890/(48.01)
↑ -120- ↓	20	1.900/(48.26)	1.990/(50.55)
↑ -121- ↓	21	2.000/(50.80)	2.090/(53.09)
↑ -122- ↓	22	2.100/(53.34)	2.190/(55.63)
↑ -123- ↓	23	2.200/(55.88)	2.290/(58.17)
↑ -124- ↓	24	2.300/(58.42)	2.390/(60.71)
↑ -125- ↓	25	2.400/(60.96)	2.490/(63.25)
↑ -126- ↓	26	2.500/(63.50)	2.590/(65.79)
↑ -127- ↓	27	2.600/(66.04)	2.690/(68.33)
↑ -128- ↓	28	2.700/(68.58)	2.790/(70.87)
↑ -129- ↓	29	2.800/(71.12)	2.890/(73.41)
↑ -130- ↓	30	2.900/(73.66)	2.990/(75.95)
↑ -131- ↓	31	3.000/(76.20)	3.090/(78.49)
↑ -132- ↓	32	3.100/(78.74)	3.190/(81.03)
↑ -133- ↓	33	3.200/(81.28)	3.290/(83.57)
↑ -134- ↓	34	3.300/(83.82)	3.390/(86.11)
↑ -135- ↓	35	3.400/(86.36)	3.490/(88.65)
↑ -136- ↓	36	3.500/(88.90)	3.590/(91.19)
↑ -137- ↓	37	3.600/(91.44)	3.690/(93.73)
↑ -138- ↓	38	3.700/(93.98)	3.790/(96.27)
↑ -139- ↓	39	3.800/(96.52)	3.890/(98.81)
↑ 91XX-3-140-XX ↓	40	3.900/(99.06)	3.990/(101.35)

PART No.	DIM "C"	DIM "D"	DIM "E"	DIM "F"
91XX-3-1XX-01	.230 (5.84)	.110 (2.79)	.155 (3.94)	.200 (5.08)
↑ -02 ↓	.300 (7.62)	.110 (2.79)	.155 (3.94)	.200 (5.08)
↑ -03 ↓	.370 (9.40)	.110 (2.79)	.155 (3.94)	.200 (5.08)
↑ -04 ↓	.440 (11.18)	.110 (2.79)	.155 (3.94)	.200 (5.08)
↑ -05 ↓	.510 (12.95)	.110 (2.79)	.155 (3.94)	.200 (5.08)
↑ -06 ↓	.580 (14.73)	.110 (2.79)	.155 (3.94)	.200 (5.08)
↑ -07 ↓	.650 (16.51)	.110 (2.79)	.155 (3.94)	.200 (5.08)
↑ 91XX-3-1XX-09 ↓	.720 (18.29)	.110 (2.79)	.155 (3.94)	.200 (5.08)
↑ 91XX-3-1XX-10 ↓	.790 (20.07)	.110 (2.79)	.155 (3.94)	.200 (5.08)