

**FEATURES AND SPECIFICATIONS**

**Features and Benefits**

- 10 to 64 circuits
- Tin plated on solder tail
- Complies with industry standard DIN 41654
- Polarized
- Selective Gold plating options for contacts
- Eject levers allow end-to-end stacking with or without strain relief with no loss of board space

**Reference Information**

Packaging: Tray  
 Mates With: [5320](#)  
 Designed In: Millimeters

**Electrical**

Voltage: 250V  
 Current: 1.0A  
 Contact Resistance: 20mΩ max.  
 Dielectric Withstanding Voltage: 500V  
 Insulation Resistance: 1000 MΩ min.

**Physical**

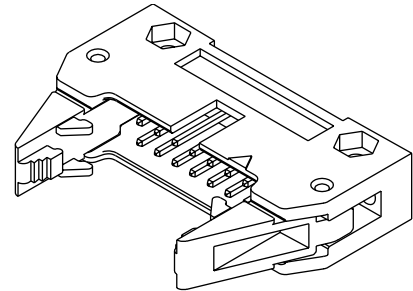
Housing: Glass-filled PBTP  
 Contact: Brass  
 Operating Temperature: -40 to +105°C



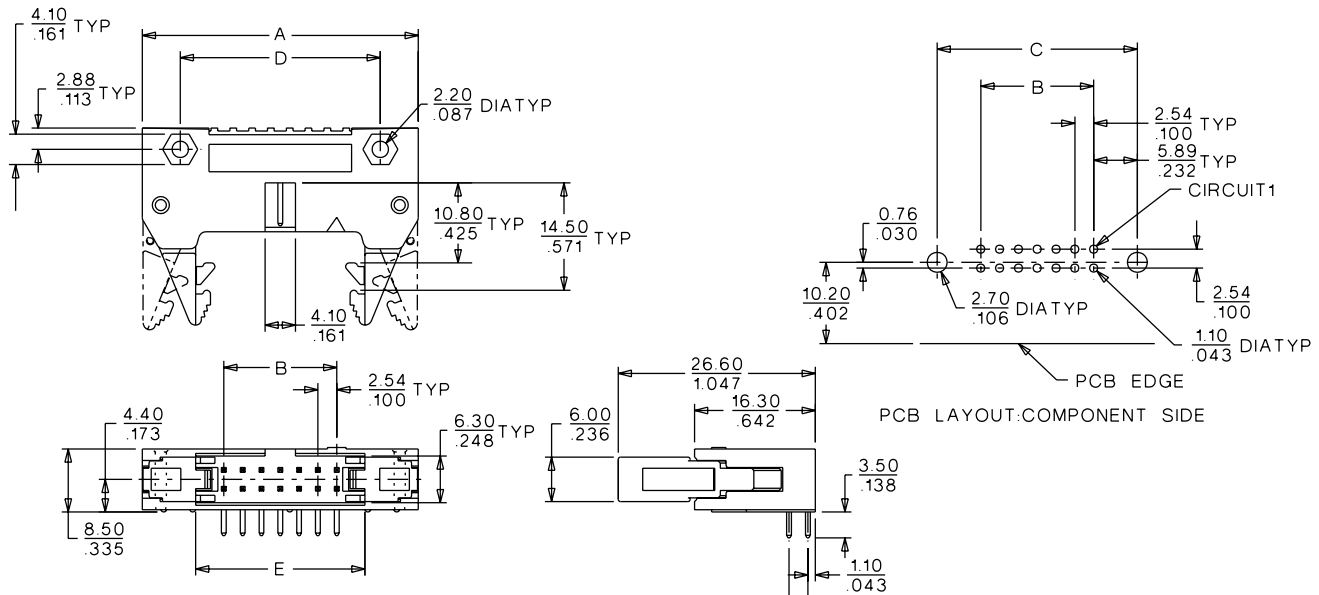
**2.54mm (.100") Pitch  
 QF 50™  
 Shrouded Header**

**5578**

**Right Angle  
 With Eject Levers**



**CATALOG DRAWING (FOR REFERENCE ONLY)**



**ORDERING INFORMATION AND DIMENSIONS**

Circuits	Order No.			Dimension				
	Plating NBGS1	Plating NBGS2	Plating NBT2	A	B	C	D	E
10	39-27-1106	39-27-1107	39-28-5106	32.16 (1.266)	10.16 (.400)	28.04 (1.104)	21.94 (.864)	17.76 (.700)
14	39-27-1146	39-27-1147	39-28-5146	37.24 (1.466)	15.24 (.600)	33.12 (1.304)	27.02 (1.064)	22.84 (.900)
16	39-27-1166	39-27-1167	39-28-5166	39.78 (1.566)	17.78 (.700)	35.66 (1.404)	29.56 (1.164)	25.38 (1.000)
20	39-27-1206	39-27-1207	39-28-5206	44.86 (1.766)	22.86 (.900)	40.74 (1.604)	34.64 (1.364)	30.46 (1.200)
26	39-27-1266	39-27-1267	39-28-5266	52.48 (2.066)	30.48 (1.200)	48.36 (1.904)	42.26 (1.664)	38.08 (1.500)
30	39-27-1306	39-27-1307	39-28-5306	57.56 (2.266)	35.56 (1.400)	53.44 (2.104)	47.34 (1.864)	43.16 (1.700)
34	39-27-1346	39-27-1347	39-28-5346	62.64 (2.466)	40.64 (1.600)	58.52 (2.304)	52.42 (2.064)	48.24 (1.900)
40	39-27-1406	39-27-1407	39-28-5406	70.26 (2.766)	48.26 (1.900)	66.14 (2.604)	60.04 (2.364)	55.86 (2.200)
50	39-27-1506	39-27-1507	39-28-5506	82.96 (3.266)	60.96 (2.400)	78.84 (3.104)	72.74 (2.864)	68.56 (2.700)
60	39-27-1606	39-27-1607		95.66 (3.766)	73.66 (2.900)	91.54 (3.604)	85.44 (3.364)	81.26 (3.200)
64	39-27-1646	39-27-1647		100.74 (3.966)	78.74 (3.100)	96.62 (3.804)	90.52 (3.564)	86.34 (3.400)

Plating NBGS1: 39µ" (1µm) min. Nickel underplate. Contact area: 0.1µm min. Gold.  
 Solder area: 3µm min. Tin/Lead.  
 Plating NBGS2: 39µ" (1µm) min. Nickel underplate. Contact area: 0.76µm min. Gold.  
 Solder area: 3µm min. Tin/Lead.  
 Plating NBT2: 20µ" (0.5µm) min. Nickel underplate. Contact and solder area: 39µ" (1µm) min. Tin.



ENG. NO. SHEET 2 OF 2  
 SD-5578-NB\*-\*\*  
 EDP NO. SEE CHART  
 DIMENSIONS IN METRIC DO NOT SCALE DRAWING

8 7 6 5 4 3 2 1

39-27-3644	5578-64BGS3-GY	39-27-1648	5578-64BGS3	64
▲ -3604	▲ -60BGS3-GY	▲ -1608	▲ -60BGS3	60
-3504	-50BGS3-GY	-1508	-50BGS3	50
-3404	-40BGS3-GY	-1408	-40BGS3	40
-3344	-34BGS3-GY	-1348	-34BGS3	34
-3304	-30BGS3-GY	-1308	-30BGS3	30
-3264	-26BGS3-GY	-1268	-26BGS3	26
-3204	-20BGS3-GY	-1208	-20BGS3	20
-3164	-16BGS3-GY	-1168	-16BGS3	16
▼ -3144	▼ -14BGS3-GY	▼ -1148	▼ -14BGS3	14
39-27-3104	5578-10BGS3-GY	39-27-1108	5578-10BGS3	10
EDP NO.	ENG. NO.	EDP NO.	ENG. NO.	NO. OF CKTS.
5578-NBGS3-GY		5578-NBGS3		
39-27-3643	5578-64BGS2-GY	39-27-1647	5578-64BGS2	64
▲ -3603	▲ -60BGS2-GY	▲ -1607	▲ -60BGS2	60
-3503	-50BGS2-GY	-1507	-50BGS2	50
-3403	-40BGS2-GY	-1407	-40BGS2	40
-3343	-34BGS2-GY	-1347	-34BGS2	34
-3303	-30BGS2-GY	-1307	-30BGS2	30
-3263	-26BGS2-GY	-1267	-26BGS2	26
-3203	-20BGS2-GY	-1207	-20BGS2	20
-3163	-16BGS2-GY	-1167	-16BGS2	16
▼ -3143	▼ -14BGS2-GY	▼ -1147	▼ -14BGS2	14
39-27-3103	5578-10BGS2-GY	39-27-1107	5578-10BGS2	10
EDP NO.	ENG. NO.	EDP NO.	ENG. NO.	NO. OF CKTS.
5578-NBGS2-GY		5578-NBGS2		
39-27-3642	5578-64BGS1-GY	39-27-1646	5578-64BGS1	64
▲ -3602	▲ -60BGS1-GY	▲ -1606	▲ -60BGS1	60
39-28-5506	5578-50BT2	-1506	-50BGS1	50
▲ -5406	▲ -40BT2	-1406	-40BGS1	40
-5346	-34BT2	-1346	-34BGS1	34
-5306	-30BT2	-1306	-30BGS1	30
-5266	-26BT2	-1266	-26BGS1	26
-5206	-20BT2	-1206	-20BGS1	20
-5166	-16BT2	-1166	-16BGS1	16
▼ -5146	▼ -14BT2	▼ -1146	▼ -14BGS1	14
39-28-5106	5578-10BT2	39-27-3102	5578-10BGS1-GY	10
EDP NO.	ENG. NO.	EDP NO.	ENG. NO.	NO. OF CKTS.
5578-NBT2		5578-NBGS1-GY		5578-NBGS1

材料 MATERIAL	SEE SHEET 1 OF 2	MOLEX MOLEX-JAPAN CO.,LTD. 日本モレックス株式会社
仕上げ FINISH	SEE SHEET 1 OF 2	EDP. NO. SEE CHART
適用電線範囲 WIRE RANGE	— —	ENG. NO. SHEET 2 OF 2 SD-5578-NB*-**
被覆外径 INS. RANGE	— —	REV F
DRAWN BY 09/12/4 H.HIRAMOTO	CHK'D BY	TITLE 名称 OIK FLECS HEADER ASS'Y R.A. WITH DIN EJECT LEVER
APP'D BY	尺度 SCALE 2 - 1	

角度 ANGLE	+3°
30 以上 OVER	+0.3
10 以上 30 未満 UNDER	+0.25
10 未満 UNDER	+0.2
一般公差 GENERAL TOLERANCES	

記号 LTR  
 変更内容 REVISION RECORD  
 日付 DATE  
 89/12/4  
 H.H.  
 SEE SHEET 1 OF 2  
**REVISE ONLY ON CAD SYSTEM**

5578-522