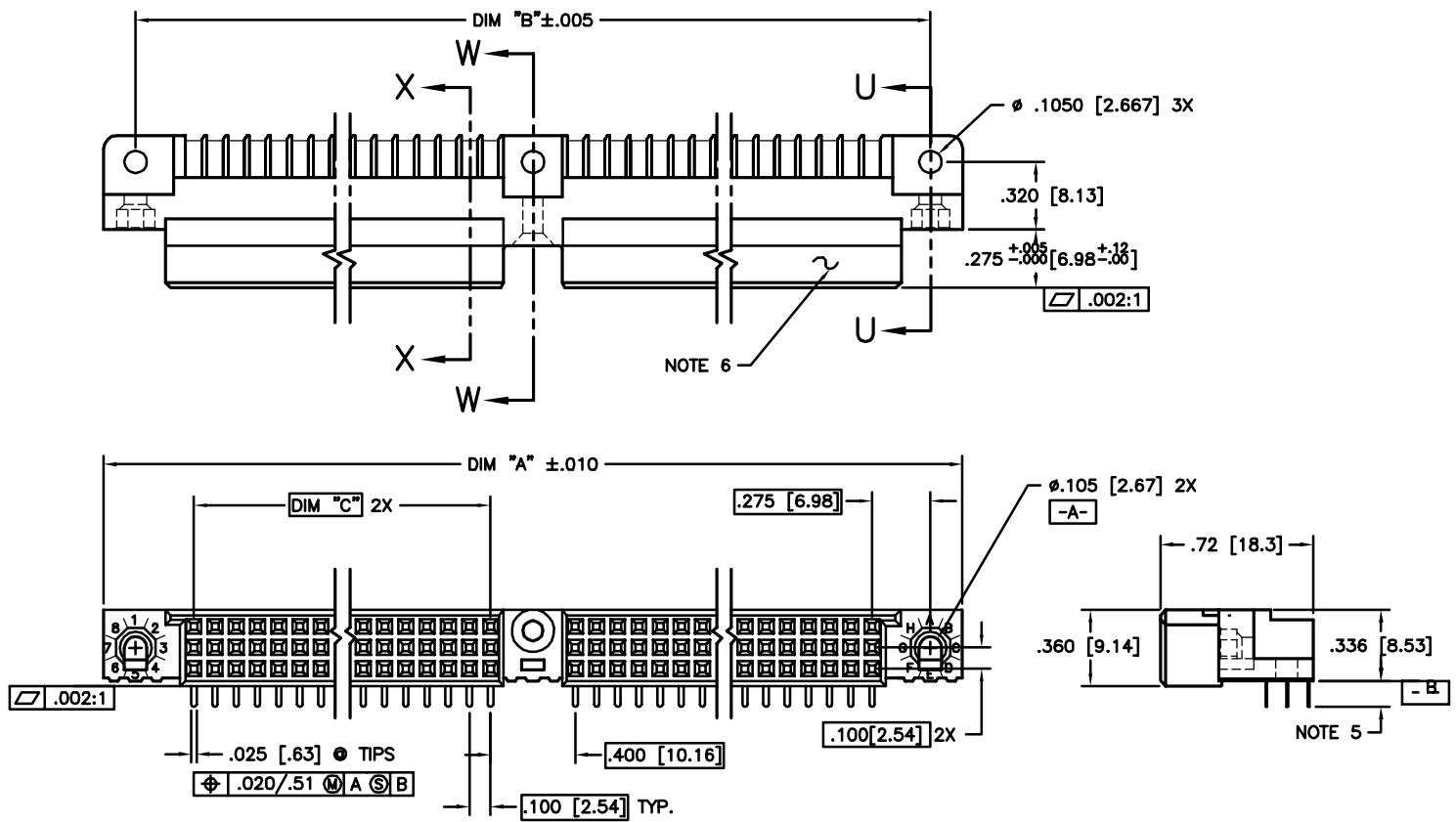


Tous droits strictement réservés. Reproduction ou communication à des tiers interdite sous quelque forme que ce soit sans autorisation écrite du propriétaire. Propriété de FCI. Droits de reproduction FCI.

All rights strictly reserved. Reproduction or issue to third parties in any form whatever is not permitted without written authority from the proprietor. Property of FCI. Copyright FCI.

PRODUCT NUMBER  
SEE NOTE 1



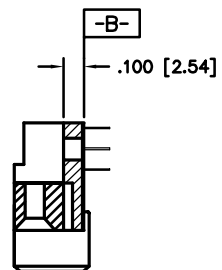
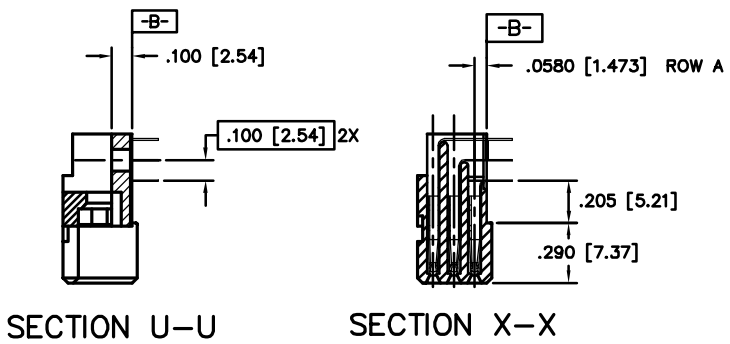
mat'l. code				tolerances unless otherwise specified			CUSTOMER COPY		Electronics www.fciconnect.com		
NOTE 3											
ltr	ecn no	dr	date	linear	.XX±.01/.X±.3			projection	title		
A	V40979	GAH	6/8/94		.XXX±.005/.XX±.13				3 ROW R/A RECEPTACLES		
B	V00294	JWS	2/7/00		.XXX±.0020/.XXX±.051				1 G.P., NO-RIB, GENERIC MNT.		
C	V20646	MEM	5/24/02	angles	0° ±2'			INCH/MM scale 1:1	product family HPC code 213		
				dr	G. HULL	7/28/94	size		sheet 1 of 2		
				engr	D. HORCHLER	6/8/94	size				
				chr	D. HORCHLER	7/28/94	size				
				appd	S. CLARK	8/5/94	size				
sheet index	revision sheet	C	C								
		1	2								
							cage code		22526		

ACAD

Tous droits strictement réservés. Reproduction ou communication à des tiers interdite sous quelque forme que ce soit sans autorisation écrite du propriétaire. Propriété de c FCI. Droits de reproduction FCI.

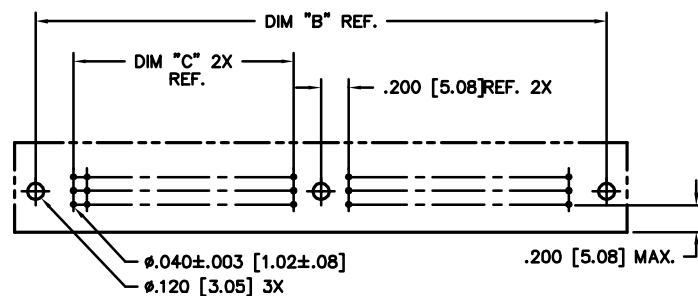
All rights strictly reserved. Reproduction or issue to third parties in any form whatever is not permitted without written authority from the proprietor. Property of FCI. Copyright FCI.

PRODUCT NUMBER	DIM.	LENGTH FORMULAS
SEE NOTE 1	DIM A	.100/2.54 X NO. OF COLUMNS + 1.05/26.7
	DIM B	.100/2.54 X NO. OF COLUMNS + .750/19.05
	DIM C	.100/2.54 X NO. OF COLUMNS DIVIDED BY 2 - .100/2.54



SECTION W-W

- NOTES:
- PRODUCT NUMBERING CODE:  
50829 - X YYY Z  
TAIL LENGTH(NOTE 5)  
NO. OF POSITIONS(NOTE 2)  
PLATING(NOTE 4)  
BASE NUMBER
  - THIS PRODUCT IS CONFIGURED IN SIZES OF 20 THRU 122 COLUMNS IN INCREMENTS OF TWO.  
i.e.: 20,22,24,26.....118,120,122.
  - HOUSING MATERIAL: GLASS AND MINERAL FILLED HIGH TEMP. THERMOPLASTIC. FLAME RETARDANT PER UL94V-0. COLOR: BLACK.  
CONTACT MATERIAL: BeCu
  - PLATING CONTACT AREA OPTIONS:  
1 = 30u"/.76u GOLD  
3 = 50u"/1.27u GOLD  
5 = 30u"/.76u GXT  
ALL SOLDER TAILS TIN/LEAD
  - TAIL LENGTH OPTIONS:  
E = .125±.010 / 3.18±.25  
F = .145±.010 / 3.68±.25  
H = .180±.010 / 4.57±.25
  - MANUFACTURE'S NAME, PART NUMBER AND LOT CODE TO APPEAR ON THIS SURFACE PER BUS-12-108.
  - FOR DOCUMENTATION MENU, SEE SPECIFICATION BUS-01-057.



RECOMMENDED PCB LAYOUT  
(ALL HOLES LOCATED ON .100 [2.54] GRID UNLESS OTHERWISE SPECIFIED)

mat'l. code		tolerances unless otherwise specified		CUSTOMER COPY		Electronics www.fciconnect.com	
ltr	ecn no	dr	date	linear	.XX±.01/.X±.3	projection	title
C					.XXX±.005/.XX±.13		3 ROW R/A RECEPTACLES
				angles	.XXX±.0020/.XXX±.051		1 G.P., NO-RIB, GENERIC MNT.
				dr	G. HULL 7/28/94	INCH/MM	product family HPC
				engr	D. HORCHLER 6/8/94	scale	code 213
				chr	D. HORCHLER 7/28/94	1:1	size dwg no
				appd	S. CLARK 8/5/94	A	50829
sheet index	revision sheet						sheet 2 of

cage code 22526

ACAD