

S1F78101Y Series Technical Manual

NOTICE

No part of this material may be reproduced or duplicated in any form or by any means without the written permission of Seiko Epson. Seiko Epson reserves the right to make changes to this material without notice. Seiko Epson does not assume any liability of any kind arising out of any inaccuracies contained in this material or due to its application or use in any product or circuit and, further, there is no representation that this material is applicable to products requiring high level reliability, such as, medical products. Moreover, no license to any intellectual property rights is granted by implication or otherwise, and there is no representation or warranty that anything made in accordance with this material will be free from any patent or copyright infringement of a third party. This material or portions thereof may contain technology or the subject relating to strategic products under the control of the Foreign Exchange and Foreign Trade Law of Japan and may require an export license from the Ministry of Economy, Trade and Industry or other approval from another government agency.

All other product names mentioned herein are trademarks and/or registered trademarks of their respective companies.

Configuration of product number

● DEVICES

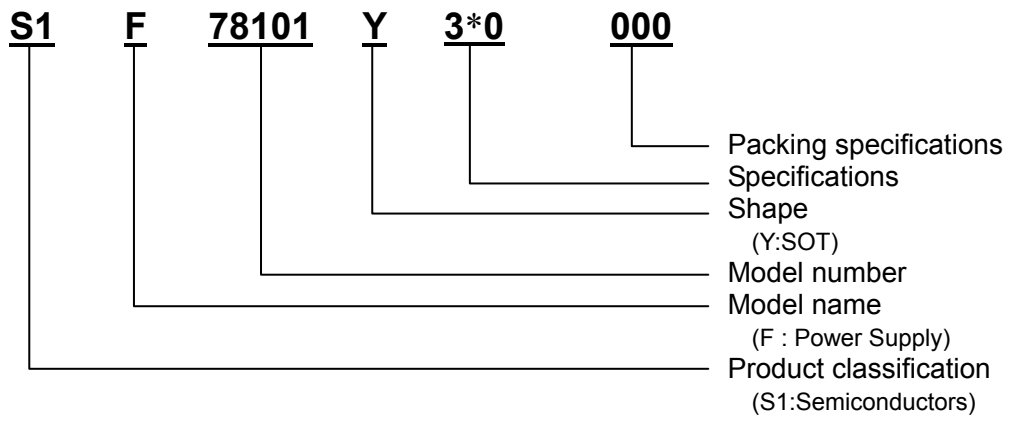


Table of Contents

1. DESCRIPTION	1
2. FEATURES.....	1
3. BLOCK DIAGRAM	1
4. PIN DESCRIPTION	2
4.1 Pin Functions	2
4.2 Pin Assignment.....	2
5. FUNCTIONAL DESCRIPTION	3
6. SERIES PRODUCT NAME LIST	4
7. ABSOLUTE MAXIMUM RATINGS	4
8. RECOMMENDED OPERATING CONDITIONS.....	4
9. ELECTRICAL CHARACTERISTICS	5
10. EXTERNAL CONNECTION SAMPLES	8
11. EXTERNAL DIMENSIONS DRAWINGS	8

1. DESCRIPTION

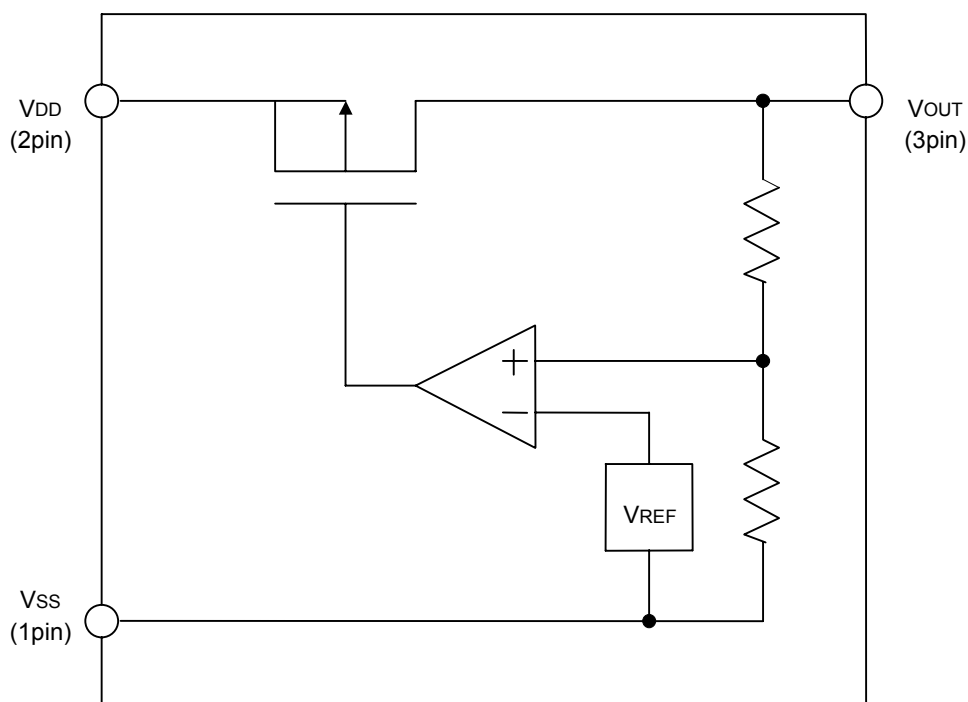
The S1F78101Y3 series is a fixed-level, positive voltage regulator developed using a CMOS silicon gate process and mainly consists of reference voltage circuit with low current consumption, differential amplifier, output control transistor, and voltage setting resistances. The output voltage is fixed inside the IC.

The package is an SOT89-3pin plastic package.

2. FEATURES

- Low current consumption : Typ. $3.0\mu\text{A}$
- Small input-output voltage difference : Typ. 0.11V ($I_{\text{O}} = 10\text{mA}$, $V_{\text{OUT}} = 5.0\text{V}$)
- Highly stable, internal reference voltage source : Typ. 1.0V
- Absolute maximum rated voltage : Max. 22V
- Wide operating voltage range : Max. 15V

3. BLOCK DIAGRAM



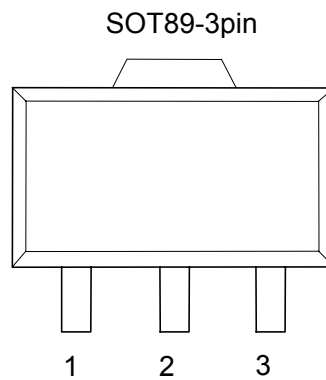
4. PIN DESCRIPTION

4. PIN DESCRIPTION

4.1 Pin Functions

Pin No.	Pin name	Pin function
1	VSS	Input voltage pin (negative side)
2	VDD	Input voltage pin (positive side)
3	VOUT	Output voltage pin

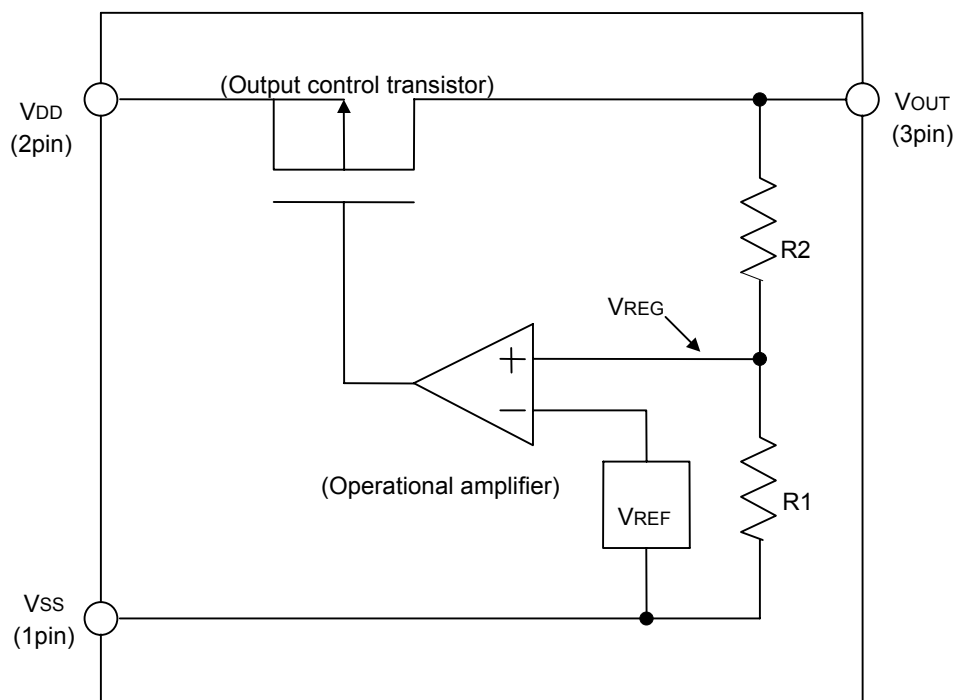
4.2 Pin Assignment



5. FUNCTIONAL DESCRIPTION

The S1F78101Y3 series is a fixed-level, positive output voltage series regulator using an output control MOS transistor between input and output pins, as shown below. It is designed to output stable voltage (V_O) independent of input voltage by feeding the voltage (V_{REG}) divided by internal resistances (R_1 and R_2) connected between the output (V_{OUT}) and V_{SS} pins back to the operational amplifier and comparing it with the reference voltage (V_{REF}) to control the gate voltage of the output control transistor. The output voltage is internally fixed, which is obtained from the formula below.

$$V_{OUT} = \frac{R_1 + R_2}{R_1} \cdot V_{REF}$$



This product has an internal inrush current limiter as a protective function.

The inrush current limiter function is designed to control power current to prevent excessive power current from flowing due to causes such as the load capacity connected to the output pin at power-on.

6. SERIES PRODUCT NAME LIST

6. SERIES PRODUCT NAME LIST

Product name	Output voltage		
	Min.	Typ.	Max.
S1F78101Y3B00	4.90	5.00	5.10
S1F78101Y3K00	3.80	3.90	4.00
S1F78101Y3T00	3.23	3.30	3.37
S1F78101Y3C00	3.13	3.20	3.27

Note: Output voltages not described above are also available.

7. ABSOLUTE MAXIMUM RATINGS

Item	Symbol	Rated value	Unit
Input voltage	VDD - VSS	22	V
Output voltage	VOUT	VDD+0.3 to VSS-0.3	
Output current	IOUT	100	mA
Allowable dissipation	Pd	200	mW
Operating temperature	T _{opr}	-40 to +85	°C
Storage ambient temperature	T _{stg}	-65 to +150	
Soldering time	T _{sol}	260°C	—
Soldering temperature		10 sec. (lead part)	

8. RECOMMENDED OPERATING CONDITIONS

Item	Symbol	Min.	Typ.	Max.	Unit
Input voltage	VDD - VSS	—	—	15	V
Output current	IOUT	0.01	—	—	mA

9. ELECTRICAL CHARACTERISTICS

●S1F78101Y3B00

(If not specified, Ta = -40 to +85°C)

Item	Symbol	Condition (V _{SS} = 0.0V)	Min.	Typ.	Max.	Unit
Input voltage	V _I		—	—	15	V
Output voltage	V _O	V _{DD} = 7.0V, I _O = -10mA T _a = 25°C	4.90	5.00	5.10	V
Current consumption	I _{OP}	V _{DD} = 5.0V to 15.0V Unloaded	—	3.0	6.2	μA
Input-output voltage difference	V _I - V _O	V _{OUT} = 5.0V, I _O = -10mA	—	0.11	0.22	V
Output voltage temperature characteristics	$\frac{\Delta V_{OUT}}{V_{OUT}}$		-320	-100	+40	ppm/°C
Input stability	$\frac{dV_O}{dV_I \cdot V_O}$	T _a = -30°C to +85°C (same temperature condition) V _{DD} = 6.0V to 15.0V I _O = -10mA	—	0.1	—	%/V
Load stability	ΔV _O	T _a = -30°C to +85°C (same temperature condition) V _{DD} = 7.0V I _O = -1mA to -50mA	—	22	—	mV
Power supply rejection ratio	PSRR	V _{DD} = 7.0V, f _{in} = 40kHz C _L = 10μF, I _{OUT} = -5mA	—	-40	—	dB

●S1F78101Y3K00

(If not specified, Ta = -40 to +85°C)

Item	Symbol	Condition (V _{SS} = 0.0V)	Min.	Typ.	Max.	Unit
Input voltage	V _I		—	—	15	V
Output voltage	V _O	V _{DD} = 6.0V, I _O = -10mA T _a = 25°C	3.80	3.90	4.00	V
Current consumption	I _{OP}	V _{DD} = 3.9V to 15.0V Unloaded	—	3.0	6.2	μA
Input-output voltage difference	V _I - V _O	V _{OUT} = 3.9V, I _O = -10mA	—	0.14	0.28	V
Output voltage temperature characteristics	$\frac{\Delta V_{OUT}}{V_{OUT}}$		-320	-100	+40	ppm/°C
Input stability	$\frac{dV_O}{dV_I \cdot V_O}$	T _a = -30°C to +85°C (same temperature condition) V _{DD} = 5.0V to 15.0V I _O = -10mA	—	0.1	—	%/V
Load stability	ΔV _O	T _a = -30°C to +85°C (same temperature condition) V _{DD} = 6.0V I _O = -1mA to -40mA	—	19	—	mV
Power supply rejection ratio	PSRR	V _{DD} = 6.0V, f _{in} = 40kHz C _L = 10μF, I _{OUT} = -5mA	—	-40	—	dB

9. ELECTRICAL CHARACTERISTICS

●S1F78101Y3T00

(If not specified, Ta = -40 to 85°C)

Item	Symbol	Condition (Vss = 0.0V)	Min.	Typ.	Max.	Unit
Input voltage	V _I		—	—	15	V
Output voltage	V _O	V _{DD} = 5.0V, I _O = -10mA Ta = 25°C	3.23	3.30	3.37	V
Current consumption	I _{OP}	V _{DD} = 3.3V to 15.0V Unloaded	—	3.0	6.2	μA
Input-output voltage difference	V _I - V _O	V _{OUT} = 3.3V, I _O = -10mA	—	0.16	0.32	V
Output voltage temperature characteristics	$\frac{\Delta V_{OUT}}{V_{OUT}}$		-320	-100	+40	ppm/°C
Input stability	$\frac{dV_O}{dV_I \cdot V_O}$	Ta = -30°C to +85°C (same temperature condition) V _{DD} = 4.0V to 15.0V I _O = -10mA	—	0.1	—	%/V
Load stability	ΔV _O	Ta = -30°C to +85°C (same temperature condition) V _{DD} = 5.0V I _O = -1mA to -30mA	—	17	—	mV
Power supply rejection ratio	PSRR	V _{DD} = 5.0V, f _{in} = 40kHz CL = 10μF, I _{OUT} = -5mA	—	-40	—	dB

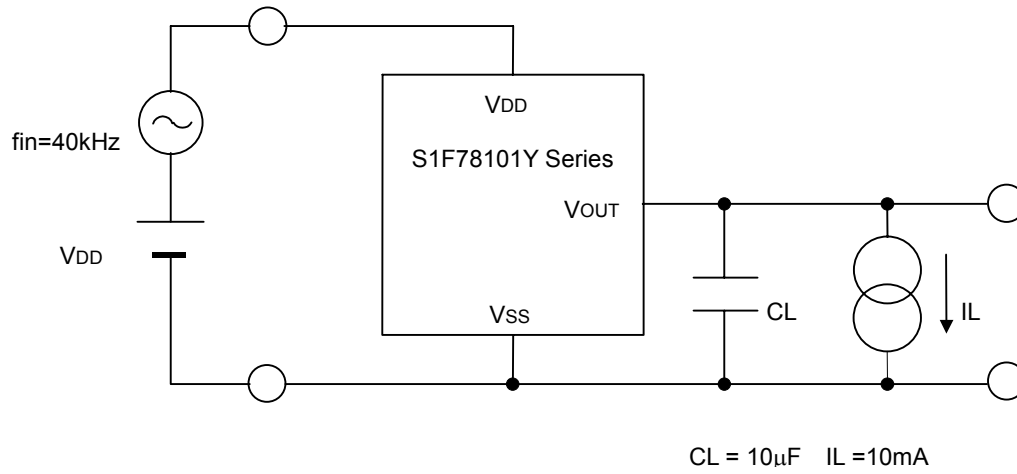
●S1F78101Y3C00

(If not specified, Ta = -40 to 85°C)

Item	Symbol	Condition (Vss = 0.0V)	Min.	Typ.	Max.	單位
Input voltage	V _I		—	—	15	V
Output voltage	V _O	V _{DD} = 5.0V, I _O = -10mA Ta = 25°C	3.13	3.20	3.27	V
Current consumption	I _{OP}	V _{DD} = 3.2V to 15.0V Unloaded	—	3.0	6.2	μA
Input-output voltage difference	V _I - V _O	V _{OUT} = 3.2V, I _O = -10mA	—	0.16	0.32	V
Output voltage temperature characteristics	$\frac{\Delta V_{OUT}}{V_{OUT}}$		-320	-100	+40	ppm/°C
Input stability	$\frac{dV_O}{dV_I \cdot V_O}$	Ta = -30°C to +85°C (same temperature condition) V _{DD} = 4.0V to 15.0V I _O = -10mA	—	0.1	—	%/V
Load stability	ΔV _O	Ta = -30°C to +85°C (same temperature condition) V _{DD} = 5.0V I _O = -1mA to -30mA	—	16	—	mV
Power supply rejection ratio	PSRR	V _{DD} = 5.0V, f _{in} = 40kHz CL = 10μF, I _{OUT} = -5mA	—	-40	—	dB

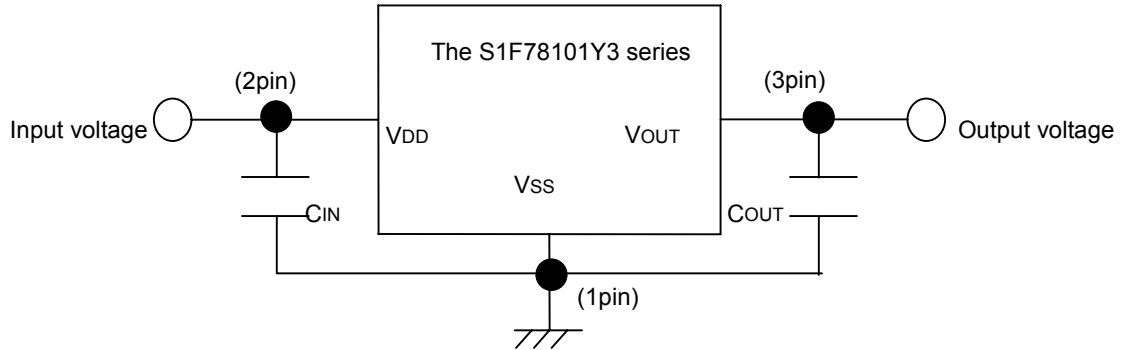
9. ELECTRICAL CHARACTERISTICS

Note: Schematic diagram for measuring power supply rejection ratio characteristics



10. EXTERNAL CONNECTION SAMPLES

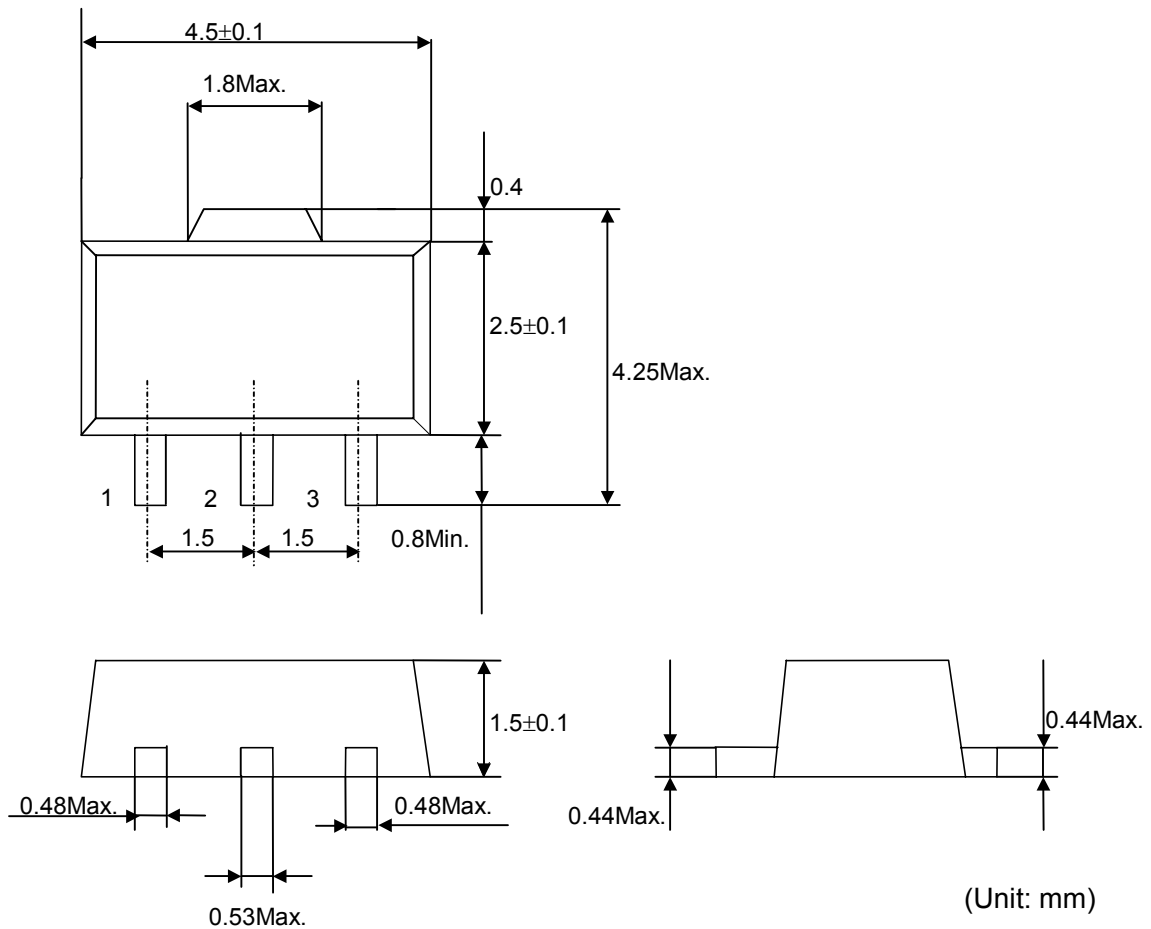
10. EXTERNAL CONNECTION SAMPLES



11. EXTERNAL DIMENSIONS DRAWINGS

Reference

SOT89-3pin



Note: The contents may be altered without prior notice according to the continual improvement.

AMERICA

EPSON ELECTRONICS AMERICA, INC.

HEADQUARTERS

2580 Orchard Parkway
San Jose , CA 95131,USA
Phone: +1-800-228-3964 FAX: +1-408-922-0238

SALES OFFICES

Northeast

301 Edgewater Place, Suite 210
Wakefield, MA 01880, U.S.A.
Phone: +1-800-922-7667 FAX: +1-781-246-5443

EUROPE

EPSON EUROPE ELECTRONICS GmbH

HEADQUARTERS

Riesstrasse 15
80992 Munich, GERMANY
Phone: +49-89-14005-0 FAX: +49-89-14005-110

ASIA

EPSON (CHINA) CO., LTD.

23F, Beijing Silver Tower 2# North RD DongSanHuan
ChaoYang District, Beijing, CHINA
Phone: +86-10-6410-6655 FAX: +86-10-6410-7320

SHANGHAI BRANCH

7F, High-Tech Bldg., 900, Yishan Road,
Shanghai 200233, CHINA
Phone: +86-21-5423-5522 FAX: +86-21-5423-5512

EPSON HONG KONG LTD.

20/F., Harbour Centre, 25 Harbour Road
Wanchai, Hong Kong
Phone: +852-2585-4600 FAX: +852-2827-4346
Telex: 65542 EPSCO HX

EPSON Electronic Technology Development (Shenzhen) LTD.

12/F, Dawning Mansion, Keji South 12th Road,
Hi- Tech Park, Shenzhen
Phone: +86-755-2699-3828 FAX: +86-755-2699-3838

EPSON TAIWAN TECHNOLOGY & TRADING LTD.

14F, No. 7, Song Ren Road,
Taipei 110
Phone: +886-2-8786-6688 FAX: +886-2-8786-6660

EPSON SINGAPORE PTE., LTD.

1 HarbourFront Place,
#03-02 HarbourFront Tower One, Singapore 098633
Phone: +65-6586-5500 FAX: +65-6271-3182

SEIKO EPSON CORPORATION

KOREA OFFICE

50F, KLI 63 Bldg., 60 Yoido-dong
Youngdeungpo-Ku, Seoul, 150-763, KOREA
Phone: +82-2-784-6027 FAX: +82-2-767-3677

GUMI OFFICE

2F, Grand B/D, 457-4 Songjeong-dong,
Gumi-City, KOREA
Phone: +82-54-454-6027 FAX: +82-54-454-6093

SEIKO EPSON CORPORATION

SEMICONDUCTOR OPERATIONS DIVISION

IC Sales Dept.

IC International Sales Group

421-8, Hino, Hino-shi, Tokyo 191-8501, JAPAN
Phone: +81-42-587-5814 FAX: +81-42-587-5117