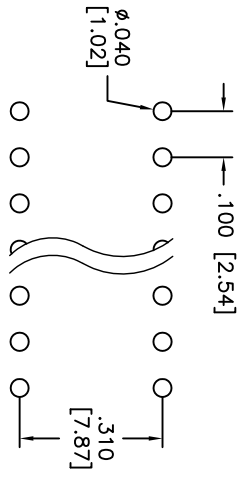
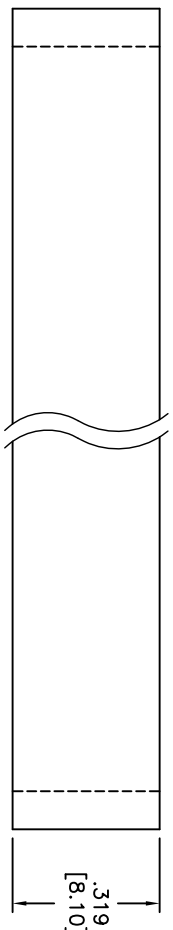
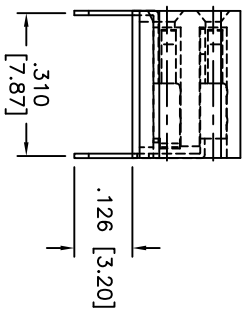
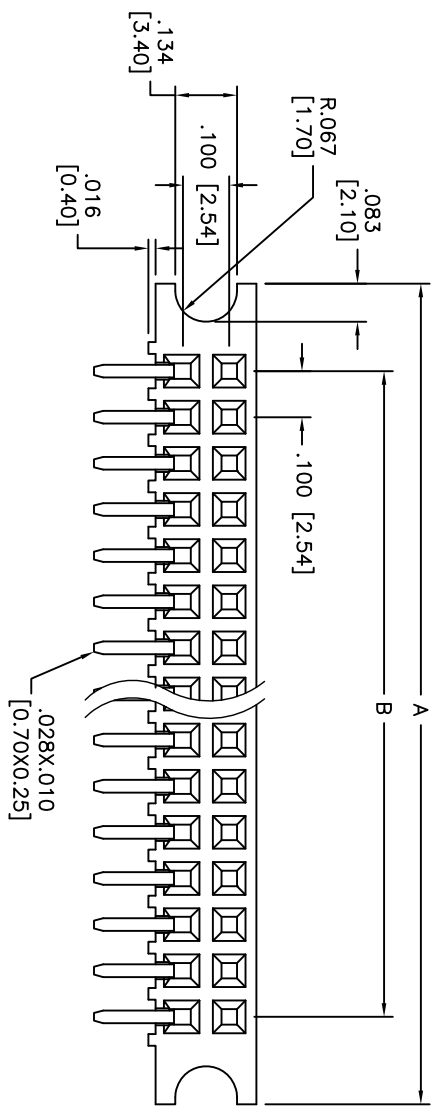


Rev	AWO #	Description	Date	Appr
-		RELEASED	5/11/10	

APPROVED: _____
 DATE: _____ TITLE: _____



RECOMMENDED PCB LAYOUT



SPECIFICATIONS:

Material: PBT, glass reinforced, rated UL 94V-0
 Insulator color: Black
 Contacts: Phosphor Bronze
 Plating: 15u" Gold over Nickel underplate overall.

Electrical:

Current rating: 3 Amps max
 Contact Resistance: 20m Ohms Max.
 Insulation resistance: 1000 Mohms min @ 500 VDC
 Dielectric withstanding voltage: 600 VAC for 1 minute
 Temperature Rating: Operating temperature: -40°C to +105°C

Environmental: Lead free, RoHS compliant.
 Recommended soldering temp: 235°C for 5 sec.

Positions: 1 thru 20 per row
 A = .100 [2.54] x No. of Positions+ .280 [7.10]
 B = .100 [2.54] x No. of Spaces

UNLESS OTHERWISE SPECIFIED
 ALL DIMENSIONS ARE INCHES [MM]
 TOLERANCES: EXCEPT AS NOTED
 INCHES: .X ± .10 ØXX ± .10
 .XX ± .020 .XXX ± .015
 .XXX ± .015 ØXXX ± .010

ADAM TECH

909 Rahway Avenue, Union, NJ 07083
 Phone: 908-687-5000 Fax: 908-687-5710

RECEPTACLE STRIP, .100 DUAL ROW
 SIDE ENTRY, 15u" GOLD PLATED

DRAWN	DY	5/11/10	SIZE	PART NO.	REV.
CHECKED			X	RS2BR-XX-G-E-15	-
APPROVED			REF:	S00092T	SHEET 1 OF 1