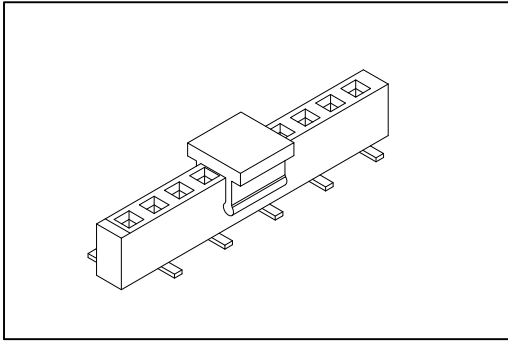


# 2143-A Series

## P.C.B. Socket 2.0mm(0.079")



### Material:

Housing: High Temperature Plastic UL94V-0.

Contacts: Copper Alloy.

### Electrical Characteristics:

Current Rating: 1 A.

Dielectric Withstanding Voltage: AC 500V.

Insulator Resistance: 1000MΩ min.

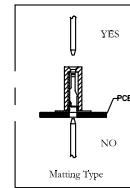
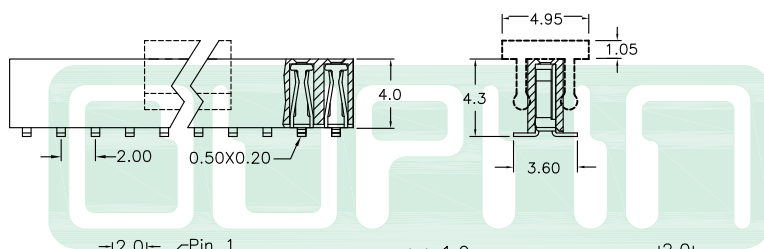
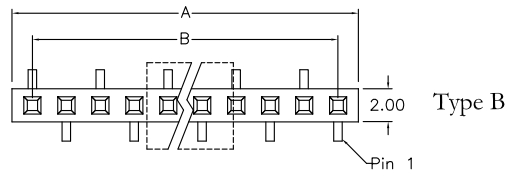
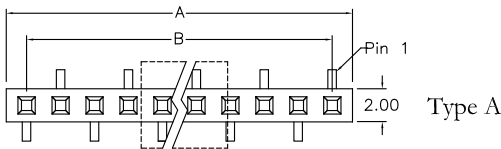
Contact Resistance: 20mΩ max.

Operating Temperature: -65°C~+125°C.

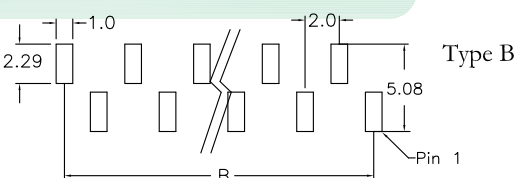
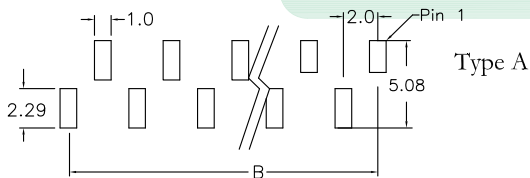
### Features:

- \* Surface Mount.
- \* Low profile 4.0mm(0.161").
- \* Two choices of foot print.
- \* Mates with 0.5mm(0.02") square pin.
- \* Pass through or Top Entry.

Mates with: 2111,2112,2113,2114,2115

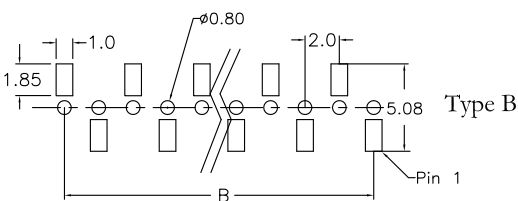
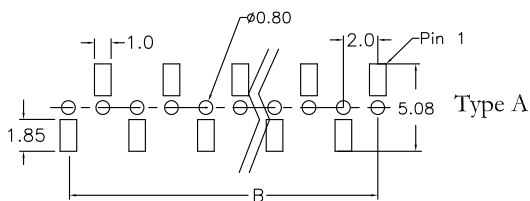


Pass through only available from top side



P.C.Board Layout

P.C.Board Layout



P.C. Board Layout for Pass Through Optional

P.C. Board Layout for Pass Through Optional

Position Dimension	2 Thru 40
A	2.0 X No. of Positions
B	2.0 X No. of Positions -2.0

## Ordering information

2143-A	1	X	40	G	00	D	A	T	-	P
Series	Single Row	No. of Pin Per Row	G: Gold Plated	00: G/F	D: SMD Type	A: Type A B: Type B	T: Tape & Reel Package U: Tube Package	Blank: W/O Pad P: Plastic Pad M: Metal Pad S: Tape Seal Pad		