



RoHS  
RoHS2,  
Lead,  
Reach  
Compliant

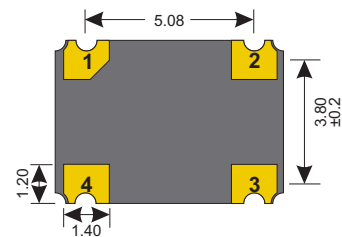
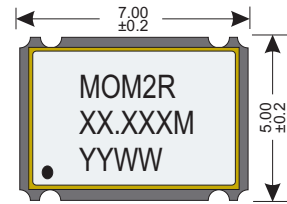


Free Of  
DRC  
Conflict  
Minerals

### Specifications

Part Number	MOM2R	
Frequency (fo)	1.000MHz ~ 125.000MHz	
Logic Family	HCMOS	
Freq. Stability (Df/fo)	±100 ppm	
Temp. Range	Operating (TOPR)	-10°C ~ +70°C
	Storage (TSTG)	-55°C ~ +125°C
RMS Phase Jitter	1pS Max RMS	

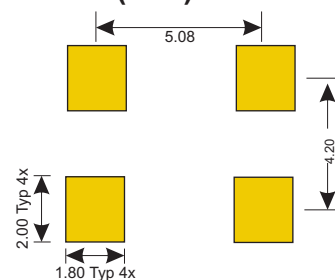
### Dimensions (mm)



### Electrical

Power Supply	Voltage (VDD)	5.0 VDC ±10%
	Current (Icc)	
	1.0MHz - 15.0MHz	25mA Max
	15.1MHz - 32.0MHz	30mA Max
	32.1MHz - 50.0MHz	45mA Max
	50.0MHz - 125.0MHz	70mA Max
Stand-by current		10uA Max
Output	Load	
	1.0 - 50.0MHz	50pF Max
	50.1 - 100.0MHz	25pF Max
	100.1 - 125.0MHz	15pF Max
	Voltage (VOL Max.)	10% Vdd
	Voltage (VOH Min.)	90% Vdd
Start Time		
	1.0MHz - 32.0MHz	5mS Max
	32.1MHz - 80.0MHz	10mS Max
Rise (TR) & Fall (TF) Time		
	1.0MHz - 20.0MHz	6nS Typ. 8ns Max
	20.1MHz - 80.0MHz	3nS Typ. 5ns Max
Duty Cycle		40/60% @ 50% Level (HCMOS) 45/55% @ 50% Level (TTL)

### Land Pattern (mm)



### Tri-State

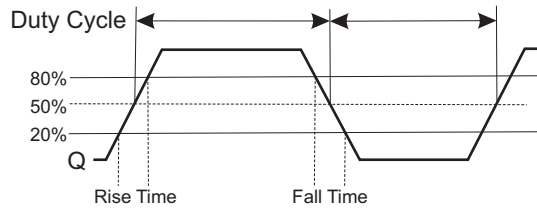
U Option (Page 2)	Default	U2
70%Vcc Min (Pin 1)	Enabled Active (Pin 3)	Disabled High Z (Pin 3)
N/C or Open (Pin 1)	Enabled Active (Pin 3)	Disabled High Z (Pin 3)
30%Vcc Max (Pin 1)	Disabled High Z (Pin 3)	Enabled Active (Pin 3)
Enable Time	10mS Max	10mS Max
Disable Time	150nS Max	150nS Max

### Connections

Pin 1	Tri-State
Pin 2	Ground
Pin 3	Output
Pin 4	Vcc



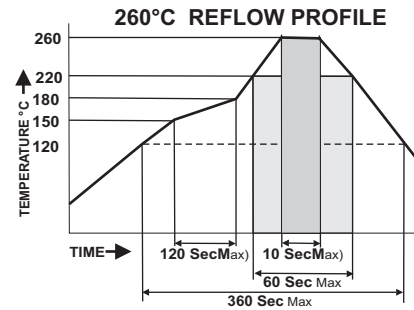
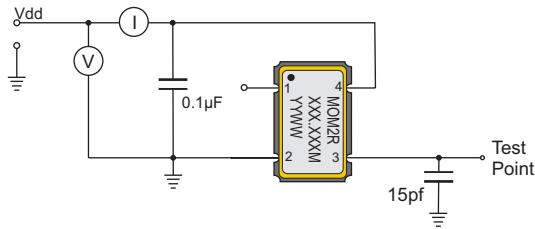
### Waveform



### Environmental And Mechanical

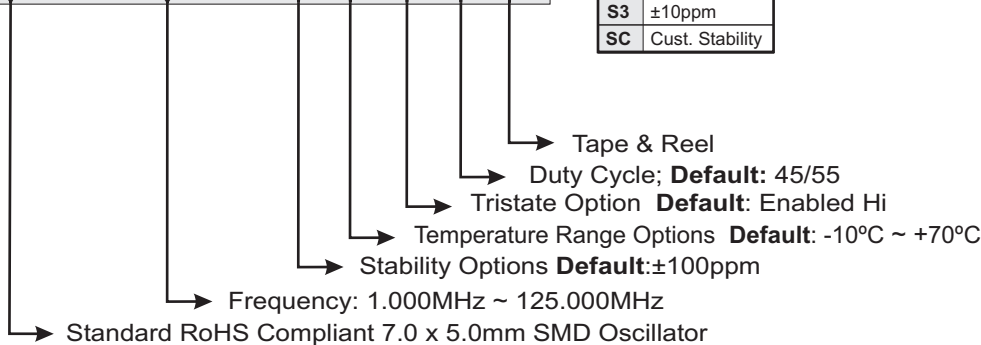
<b>Temperature</b>	10 Cycles of -30°C (30Mins), Normal (1Hr), 85°C (30Mins), Normal (1Hr)
<b>Shock</b>	Accelerated at 1000G for 1mS in each perpendicular axis.
<b>Vibration</b>	4 Cycles of 20G acceleration at 20 - 2,000Hz within 4 Minutes in each perpendicular axis.
<b>Solder</b>	Peak Temperature of 260°C Max for 10 Seconds with preheat of 160°C for 90±10% for 10 Seconds for a Maximum of 2 Cycles.

### HCMOS Test Circuit



### Part Number

**MOM2R- XX.XXXM - SX RX UX QX-T**



<b>Stability</b>	<b>Temp Range</b>	<b>Tri-State Enable</b>
S1 ±50ppm	R6 -40 ~ +85°C	U2 Tristate Lo En.
S2 ±25ppm	RC Custom Temp.	
S3 ±10ppm		<b>Duty Cycle</b>
SC Cust. Stability		Q2 47.5/52.5 Duty
		QC Cust. Duty Cycle

Options not specified default to the values indicated on the data sheet.

Example: **MOM2R-50.000M--T** is a MOM2R Package, 50.000MHz, 5.0Vdc, Operating at ±100ppm stability from -10°C ~ +70°C, Delivered on Tape & Reel

Example: **MOM2R -50.000M-S2R6-T** is a MOM2R Package, 50.000MHz, 5.0Vdc, operating at ±25ppm stability from -40°C ~ +85°C, Delivered on Tape & Reel

### Tape & Reel

