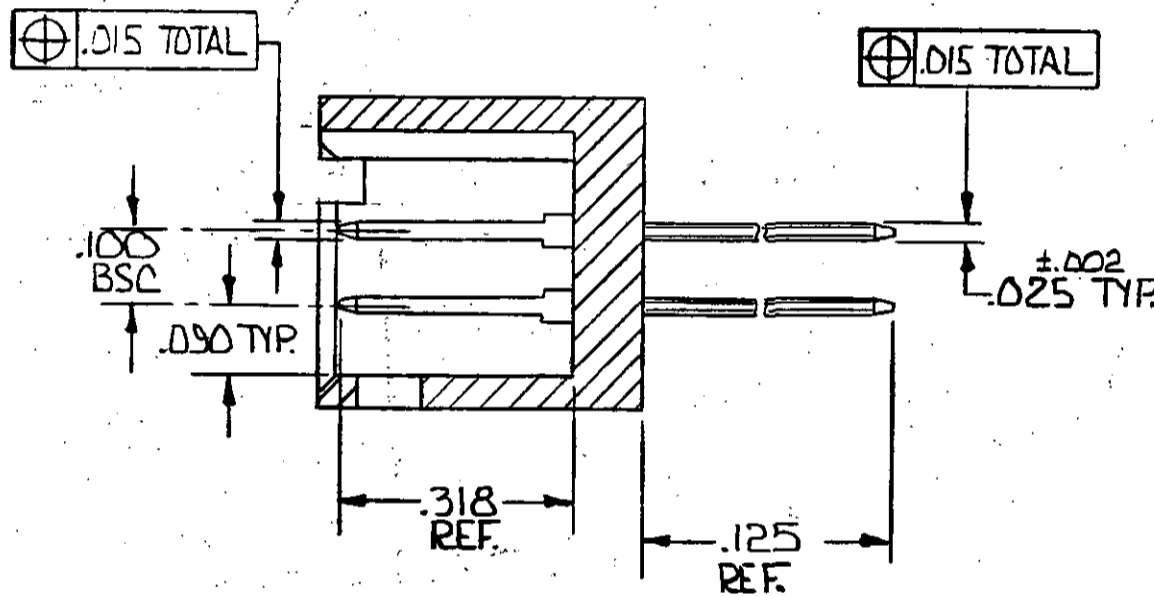
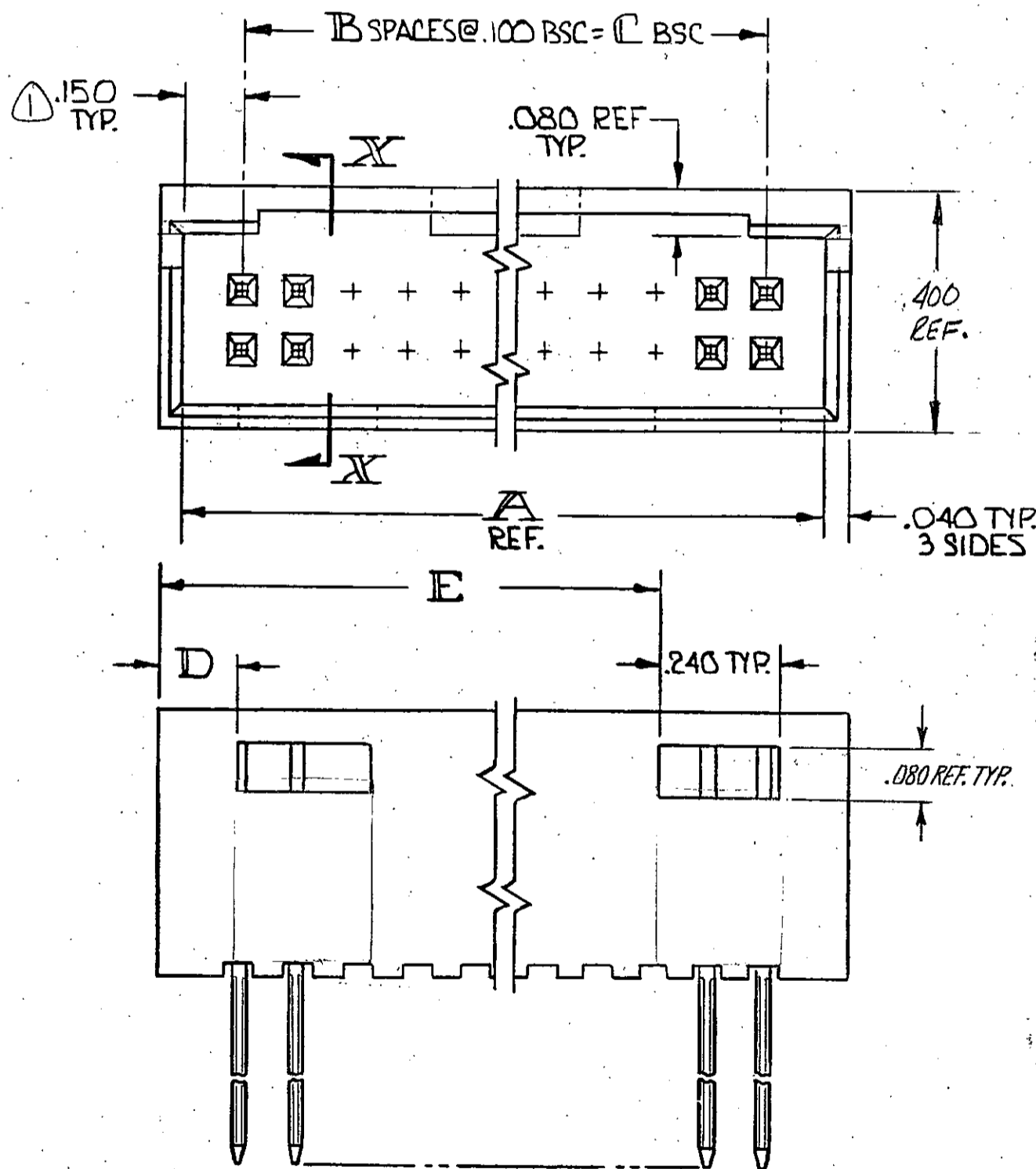
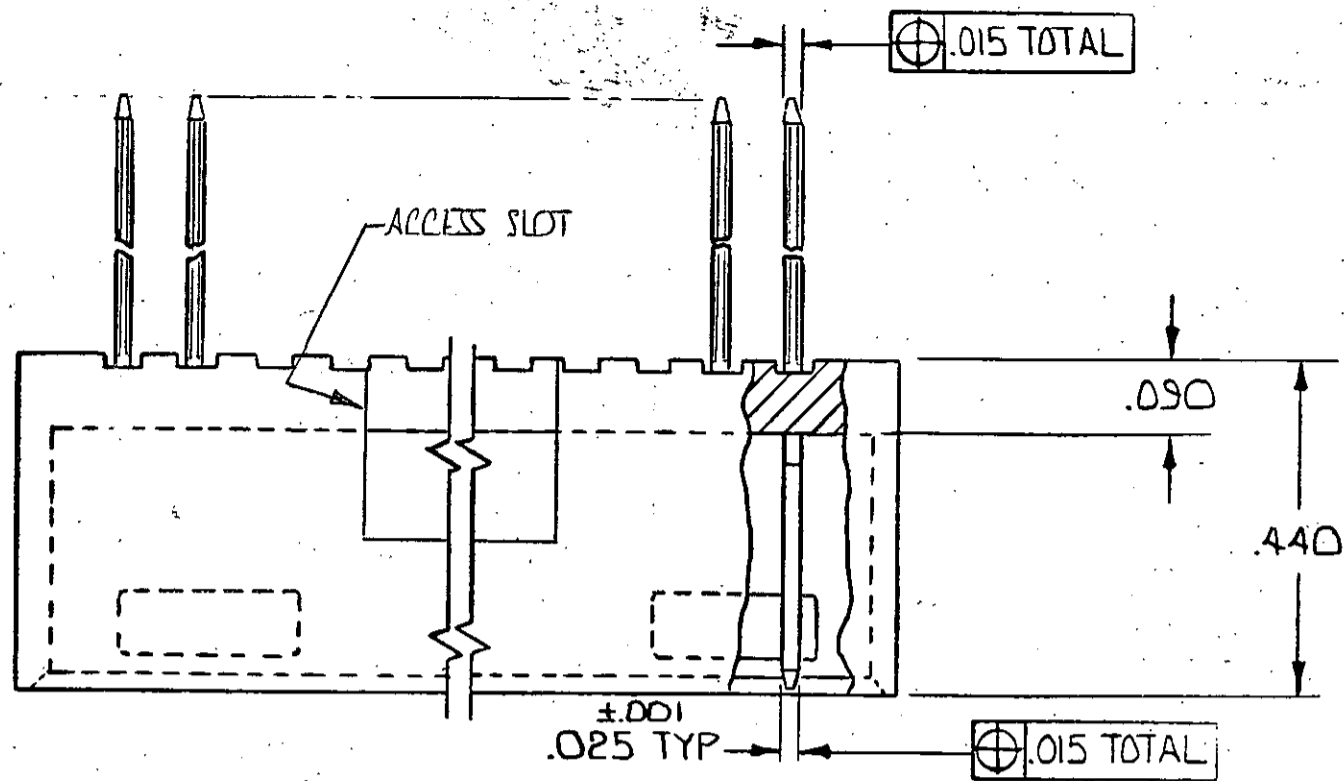


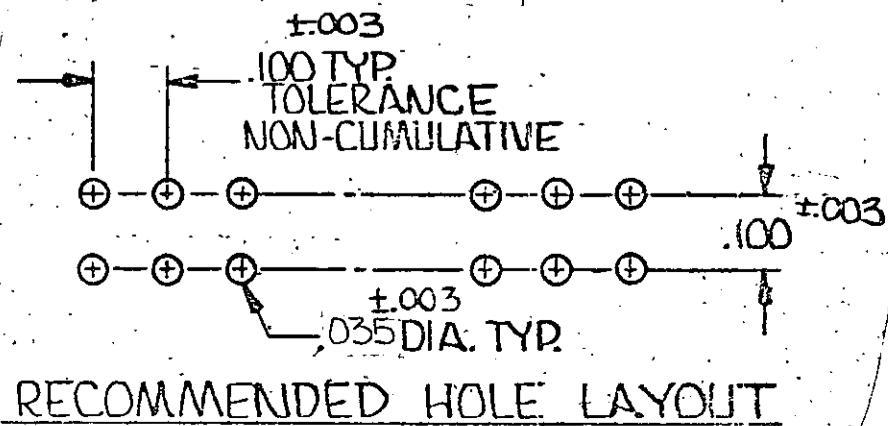
© COPYRIGHT 1975-83 BY AMP INCORPORATED, HARRISBURG, PA.
 ALL INTERNATIONAL RIGHTS RESERVED. AMP INCORPORATED PRODUCTS
 COVERED BY U. S. AND FOREIGN PATENTS AND/OR PATENTS PENDING.

REVISIONS					
P	F	ZONE	LTR	DESCRIPTION	DATE APPROVED
			OI	ADD OPT. SLOT # TITLE BLOCK COMMENT ECN-1732 BAW	1-6-76 BAW
			A	REV. PORT ABOVE ACCESS SLOT ECN 1480	7-13-76 BAW
			A1	REV. PER ECN 4620	2-25-83 RD
			B	REV-ECN 179	5-8-84 WJ
			C	OBSELETE DASH NOS. - ECN AR2295 WWP	4-11-87
			D	REV. LOC & DIST AD-4171	11-27-89 BF
			E	ELN AD-4707	8-23-90 JLG
			F	REV PER 6010-0581-93	9-23 JJA
			G	REV PER 0010-1230-94	8-5-94 JK
			H	EC. 0010-0051-95	3/10/95 T.H. J.K.
			J	EC. 0010-0159-95	4-27-95 T.H. J.K.
			K	REV PER 0310-0146-96	2-27-97 EB SAS
			L	REV PER 0310-0429-97	4-14-97 SAS



—	.190	.300	3	.600	8	3-87587-4
—	.190	.200	2	.500	6	3-87587-3
3.490	.190	3.500	35	3.800	72	3- -2
3.390		3.400	34	3.700	70	3- -1
3.290		3.300	33	3.600	68	3- -0
3.190		3.200	32	3.500	66	2- -9
3.090		3.100	31	3.400	64	2- -8
2.990		3.000	30	3.300	62	2- -7
2.890		2.900	29	3.200	60	2- -6
2.790		2.800	28	3.100	58	2- -5
2.690		2.700	27	3.000	56	2- -4
2.590		2.600	26	2.900	54	2- -3
2.490		2.500	25	2.800	52	2- -2
2.390		2.400	24	2.700	50	2- -1
2.290		2.300	23	2.600	48	2- -0
2.190		2.200	22	2.500	46	1- -9
2.090		2.100	21	2.400	44	1- -8
1.990		2.000	20	2.300	42	1- -7
1.890		1.900	19	2.200	40	1- -6
1.790		1.800	18	2.100	38	1- -5
1.690		1.700	17	2.000	36	1- -4
1.590		1.600	16	1.900	34	1- -3
1.490		1.500	15	1.800	32	1- -2
1.390		1.400	14	1.700	30	1- -1
1.290		1.300	13	1.600	28	1- -0
1.190		1.200	12	1.500	26	-9
1.090		1.100	11	1.400	24	-8
.990		1.000	10	1.300	22	-7
.890	.190	.900	9	1.200	20	-6
—	.490	.800	8	1.100	18	-5
—	.390	.700	7	1.000	16	-4
—	.390	.600	6	.900	14	-3
—	.290	.500	5	.800	12	-2
—	.290	.400	4	.700	10	87587 -1

⚠ WILL ALSO MATE W/OTHER CONNECTORS WHICH ARE COMPATIBLE WITH THE $.150$ END DIM.
 — WILL MATE W/MOD IV HAVING FOUR EXTRA EMPTY CIRCUITS (TWO EACH END -- EX: 20 POS. POST HDR. WILL MATE W/24 POS. MOD IV HSG.)



UNLESS OTHERWISE SPECIFIED DIMENSIONS ARE IN INCHES. TOLERANCES ON: DECIMALS $\pm .005$ ANGLES \pm	CONTRACT NO	AMP INCORPORATED Harrisburg, Pa.	
	DR <i>D. Jones</i> 9/12/75		NAME
	CHK <i>D. Witt</i> 9/12/75		HEADER ASSEMBLY MOD II .100 & .025 SQUARE POST, W/DETENT (MATES WITH AMP LATCH OR FFC)
	APPD <i>Bennett</i> 9-15-75		SIZE CODE IDENT NO DRAWING NO
MATERIAL	APPD <i>C. Losinski</i> 9/16/75	C 00779 87587	
HSG. - GLASS FILLED NYLON COLOR: BLACK	DSGN APPD		
CONTACT - PHOS. BRONZE	OTHER APPD	SCALE	
FINISH		SHEET 1 of 1	
CONTACT - .000100 - .000200 BRIGHT TIN-LEAD OVER .000050 NICKEL			

- [Home](#)
- [Part Number Search](#)
- [Text Search](#)
- [Alternate Part Search](#)
- [Multiple Part Comparison](#)
- [Alphabetical Search](#)
- [Brand Search](#)
- [Industry Product Search](#)
- [Product Type Search](#)
- [Product Family Search](#)
- [Competitor Cross Reference](#)
- [Document Number Search](#)
- [Lead Free Solutions](#)
- [Help/Glossary](#)

Current Brand View

AMP

[View All Tyco Electronics Brands](#)

Click to activate links to all other products

AMPMODU

.100 Centerline Through Hole Headers

AMP

3-87587-3 -- 4 of 5 products

Active

[Active](#)

(Tyco Electronics P/N: 3-87587-3)

Previous	Next	Sales Information	AMP ACES	Step Search Screen
		Related CAD Geometry	Related Documents	General Information
			Pricing	Product Availability

Please use the customer drawing for all design activity.

- **Customer Drawing: 87587, Rev. L**
 Document Title: HEADER ASSEMBLY MOD II .100CL .025 SQUARE POST, WITH DETENT (MATES WITH AMP LATCH OR FFC)

[189468.pdf](#) [189468.pdf](#) (131K)

The photographs and/or line drawings below are representative images of a product for viewing purposes only.

[Product Photo](#)

Searchable Features:

Brand:	AMP
Header Type:	Shrouded
No. of Rows:	Dual
No. of Positions:	6
Profile:	Standard
Shrouded End Dimension (mm [in]):	3.81 [.150]
Mount Angle:	Vertical
PCB Retention Feature:	Without
Surface Mount Compatible:	No
Contact Mating Area Plating:	Bright Tin-Lead
Board Standoff:	Without
Mounting Ears:	Without
Panel Attachment:	No
Mating Connector Lock:	With
Mating Connector Lock Type:	Detent Windows
High Temperature Housing:	No
Housing Style:	4-Sided
High Speed Serial Data Connector:	No
Termination Post Length (mm [in]):	3.18 [.125]

Other Properties:

Centerline Spacing (mm [in]):	2.54 x 2.54 [.100 x .100]
Post Size (mm [in]):	0.64 [.025] Sq.
Mating Post Length (mm [in]):	8.08 [.318]
Contact Material:	Phosphor Bronze
Solder Tail Plating:	Bright Tin-Lead over Nickel
Housing Material:	Glass-Filled Nylon
Housing Color:	Black

[Copyright](#) and [Privacy Statement](#)

Visit [Tyco International, Ltd.](#)

[Products](#) | [Brands](#) | [Industries](#) | [Customer Service](#) | [About](#) | [Home](#)