

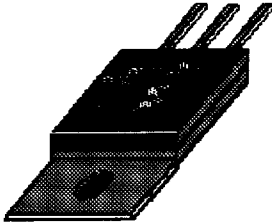
Preliminary Data Sheet

10 AMP HIGH VOLTAGE SCHOTTKY BARRIER RECTIFIERS

3/93

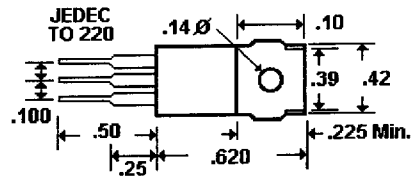
Description

SR 1030...45, C, A & D Series



Mechanical Dimensions

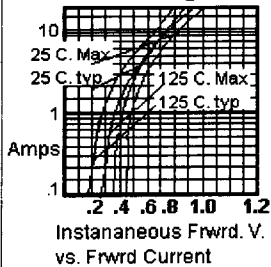
SR 1030...45, C, A & D Series



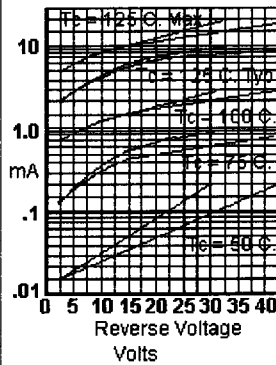
Features

- High Surge Voltage and Transient Protection
- Meets or Exceeds UL Flammability Specification 94V-0
- High Efficiency with Low Power Loss
- High Current Capability with Low Vf

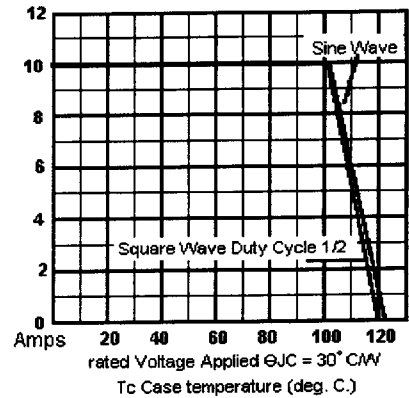
Forward Voltage Pulse Test @ Tc



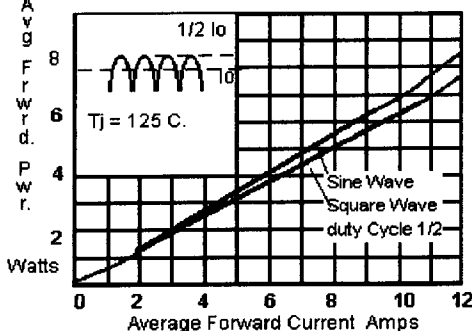
Typical Reverse Characteristics



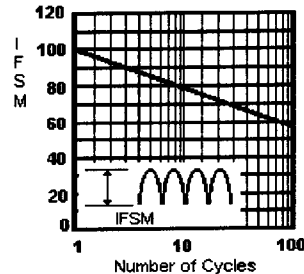
Forward Current Derating Curve



Forward Power Disipation



Maximum Surge Capability



FCI Semiconductor Preliminary Data Sheet SR 1030...45, C, A & D Series

10 AMP HIGH VOLTAGE SCHOTTKY BARRIER RECTIFIERS

193

Maximum Ratings and Electrical Characteristics (@25 Deg. C)

SR 1030...45, C, A & D Series			
SR1030	SR1035	SR1040	SR1045
30	35	40	45
35	35	45	45
100	100	100	100
10	10	10	10
----- -40 to 125 -----			
----- + 125 -----			
3.0	3.0	3.0	3.0
.55	.55	.55	.55
5	5	5	5

DC Blocking Voltage.....VRM

Maximum Repetitive Reverse Voltage...VRRSM

Pulse Test 0.5 ms, Duty Cycle 1/40

Non Repetitive Peak Forward Surge Current...IFSM

Sinusoidal Wave, 60HZ, 1 Cycle, Tj=125 Deg. C.

Average Rectified Forward Current, (Tc=104 Deg. C.)...Io

Maximum Operating Junction Temperature.....Tj

Maximum Storage Temperature.....Tstg

Thermal Resistance, Junction to case...qjc

Maximum Instantaneous Forward Voltage (@If = 5A)...Vf

Maximum Instantaneous Reverse Current (@ Vr=VRM)...Ir

Volts

Volts

Amps

Deg. C/W

Deg. C

Deg. C/W

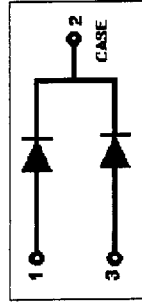
Volts Max.

mA

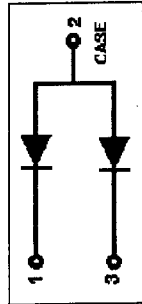
SR 1030...45, C, A & D Series 10 AMP HIGH VOLTAGE SCHOTTKY BARRIER RECTIFIERS

Electrical Description

Common Cathode Suffix "C"



Common Anode Suffix "A"



Double Suffix "D"

