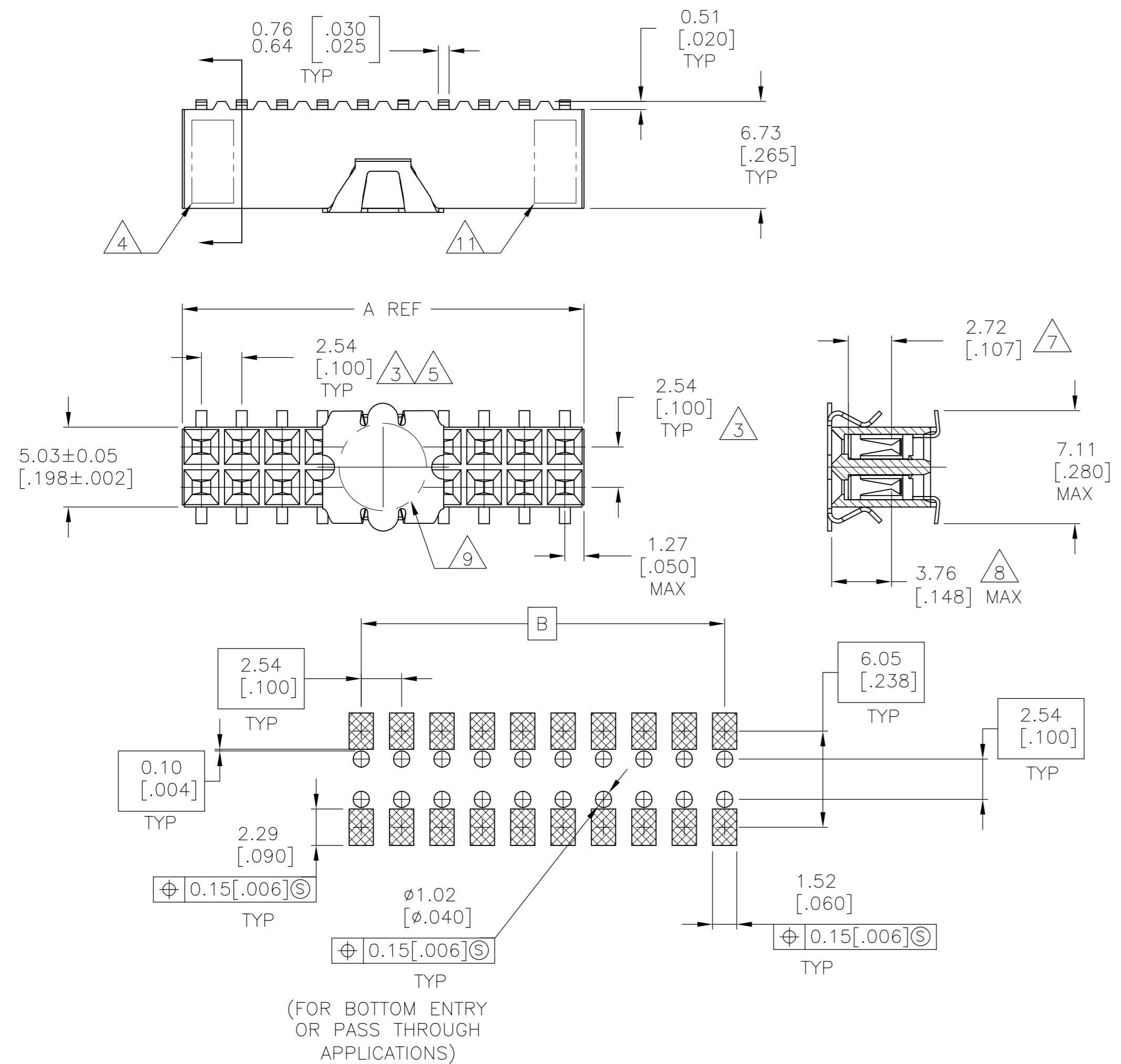


THIS DRAWING IS UNPUBLISHED. RELEASED FOR PUBLICATION  
 © COPYRIGHT BY TYCO ELECTRONICS CORPORATION. ALL RIGHTS RESERVED.

LOC	DIST	REVISIONS					
		P	LTR	DESCRIPTION	DATE	DWN	APVD
AD	00	J1		ECO 05 007253	14APR06	BSV	JO
		J2		REVISED PER ECO-09-020932	03SEP09	KK	AEG

FOR PART NUMBERS 5-147104-1 THRU 9-147104-0  
 SEE SHEET 2



RECOMMENDED PC BOARD LAYOUT  
 0.20[.008] THICK STENCIL

FINISH	EIA TAPE WIDTH	B	A	NO.OF POSN.	PART NUMBER	
OBSOLETE	2	120mm	99.06 [3.900]	101.60 [4.000]	80	4-147104-0 $\Delta 15$
			96.52 [3.800]	99.06 [3.900]	78	3-147104-9 $\Delta 15$
			93.98 [3.700]	96.52 [3.800]	76	3-147104-8 $\Delta 15$
			91.44 [3.600]	93.98 [3.700]	74	3-147104-7 $\Delta 15$
			88.90 [3.500]	91.44 [3.600]	72	3-147104-6 $\Delta 15$
			86.36 [3.400]	88.90 [3.500]	70	3-147104-5 $\Delta 15$
			83.82 [3.300]	86.36 [3.400]	68	3-147104-4 $\Delta 15$
			81.28 [3.200]	83.82 [3.300]	66	3-147104-3 $\Delta 15$
			78.74 [3.100]	81.28 [3.200]	64	3-147104-2 $\Delta 15$
			76.20 [3.000]	78.74 [3.100]	62	3-147104-1 $\Delta 15$
			73.66 [2.900]	76.20 [3.000]	60	3-147104-0 $\Delta 15$
			71.12 [2.800]	73.66 [2.900]	58	2-147104-9 $\Delta 15$
		68.58 [2.700]	71.12 [2.800]	56	2-147104-8 $\Delta 15$	
		66.04 [2.600]	68.58 [2.700]	54	2-147104-7 $\Delta 15$	
		63.50 [2.500]	66.04 [2.600]	52	2-147104-6 $\Delta 15$	
		60.96 [2.400]	63.50 [2.500]	50	2-147104-5 $\Delta 15$	
		58.42 [2.300]	60.96 [2.400]	48	2-147104-4 $\Delta 15$	
		55.88 [2.200]	58.42 [2.300]	46	2-147104-3 $\Delta 15$	
		53.34 [2.100]	55.88 [2.200]	44	2-147104-2 $\Delta 15$	
		50.80 [2.000]	53.34 [2.100]	42	2-147104-1 $\Delta 15$	
		48.26 [1.900]	50.80 [2.000]	40	2-147104-0 $\Delta 15$	
		45.72 [1.800]	48.26 [1.900]	38	1-147104-9 $\Delta 15$	
		43.18 [1.700]	45.72 [1.800]	36	1-147104-8 $\Delta 15$	
		40.64 [1.600]	43.18 [1.700]	34	1-147104-7 $\Delta 15$	
38.10 [1.500]	40.64 [1.600]	32	1-147104-6 $\Delta 15$			
35.56 [1.400]	38.10 [1.500]	30	1-147104-5 $\Delta 15$			
33.02 [1.300]	35.56 [1.400]	28	1-147104-4 $\Delta 15$			
30.48 [1.200]	33.02 [1.300]	26	1-147104-3 $\Delta 15$			
27.94 [1.100]	30.48 [1.200]	24	1-147104-2 $\Delta 15$			
25.40 [1.000]	27.94 [1.100]	22	1-147104-1 $\Delta 15$			
22.86 [.900]	25.40 [1.000]	20	1-147104-0 $\Delta 15$			
20.32 [.800]	22.86 [.900]	18	147104-9 $\Delta 15$			
17.78 [.700]	20.32 [.800]	16	147104-8 $\Delta 15$			
15.24 [.600]	17.78 [.700]	14	147104-7 $\Delta 15$			
12.70 [.500]	15.24 [.600]	12	147104-6 $\Delta 15$			
10.16 [.400]	12.70 [.500]	10	$\Delta 12$ 147104-5 $\Delta 15$			
7.62 [.300]	10.16 [.400]	8	$\Delta 12$ 147104-4 $\Delta 15$			
5.08 [.200]	7.62 [.300]	6	$\Delta 12$ 147104-3 $\Delta 15$			
2.54 [.100]	5.08 [.200]	4	$\Delta 12$ 147104-2 $\Delta 15$			
		2	$\Delta 12$ $\Delta 6$ 147104-1 $\Delta 15$			

THIS DRAWING IS A CONTROLLED DOCUMENT.

DWN M.BINNER 06NOV02  
 CHK J.OLSON 06NOV02  
 APVD J.OLSON 06NOV02  
 PRODUCT SPEC

APPLIC. SPEC: 108-25022  
 WEIGHT: 114-25018  
 CUSTOMER DRAWING

**tyco Electronics** Tyco Electronics Corporation  
 Harrisburg, Pa 17105-3608

NAME: RECEPTACLE ASSEMBLY, MOD IV, DOUBLE ROW, DUAL ENTRY, .100X.100CL, SURFACE MOUNT, AMPMODU

SIZE: A2 CAGE CODE: 00779 DRAWING NO: C-147104 RESTRICTED TO: -  
 SCALE: 4:1 SHEET: 1 OF 2 REV: J2

THIS DRAWING IS UNPUBLISHED. RELEASED FOR PUBLICATION  
 © COPYRIGHT BY TYCO ELECTRONICS CORPORATION. ALL RIGHTS RESERVED.

LOC		DIST		REVISIONS			
P	LTR	DESCRIPTION		DATE	DWN	APVD	
		SEE SHEET 1					

- 1 HOUSING: FLAME RETARDANT, GLASS FILLED, POLYESTER, COLOR: BLACK.  
CONTACT: PHOSPHOR BRONZE  
VACUUM COVER: STAINLESS STEEL
- 2 CONTACT: DUPLEX PLATED 0.25µm[.000010] GOLD IN CONTACT AREA, 3.81-7.62µm[.000150-.000300] BRIGHT TIN-LEAD ON, LEADS, ALL OVER 1.27µm[.000050] MINIMUM NICKEL
- 3 THESE DIMENSIONS PERTAIN TO CAVITY CENTERLINES ONLY NOT TO CONTACT LOCATIONS
- 4 TYCO PART NUMBER AND DATE CODE ARE MARKED IN APPROXIMATE LOCATION SHOWN.
- 5 TOLERANCE IS NON-CUMULATIVE.
- 6 2 POSITION DATE CODE IS MARKED OPPOSITE SIDE OF TYCO LOGO.
- 7 POINT OF MEASUREMENT DIMENSION FOR PLATING THICKNESS (INSIDE CONTACT BEAM).
- 8 POINT-OF-CONTACT DIMENSION.
- 9 ø5.51[.217] MIN TARGET AREA FOR VACUUM PICK UP. COVER TO BE REMOVED AFTER SOLDERING.
- 10. PACKAGED IN TAPE & REEL PER EIA 481 SPECIFICATION..
- 11 TYCO TRADEMARK AND CSA LOGO ARE MOLDED INTO HOUSING.
- 12 NO PART NUMBER REQUIRED ON THIS PART.
- 13 CONTACT: DUPLEX PLATED 0.25µm[.000010] GOLD IN CONTACT AREA, 3.81-7.62µm[.000150-.000300] MATTE TIN ON LEADS, ALL OVER 1.27µm[.000050] MINIMUM NICKEL.
- 14 ROHS 2002/95/EC COMPLIANT.
- 15 OBSOLETE PARTS: OBSOLETE CIS STREAMLINING PER D.RENAUD/D.SINISI

120mm	99.06[3.900]	101.60[4.000]	80	15	9-147104-0
	96.52[3.800]	99.06[3.900]	78	15	8-147104-9
	93.98[3.700]	96.52[3.800]	76	15	8-147104-8
	91.44[3.600]	93.98[3.700]	74	15	8-147104-7
	88.90[3.500]	91.44[3.600]	72	15	8-147104-6
	86.36[3.400]	88.90[3.500]	70	15	8-147104-5
	83.82[3.300]	86.36[3.400]	68	15	8-147104-4
	81.28[3.200]	83.82[3.300]	66	15	8-147104-3
	78.74[3.100]	81.28[3.200]	64	15	8-147104-2
	76.20[3.000]	78.74[3.100]	62	15	8-147104-1
	73.66[2.900]	76.20[3.000]	60	15	8-147104-0
	71.12[2.800]	73.66[2.900]	58	15	7-147104-9
	68.58[2.700]	71.12[2.800]	56	15	7-147104-8
	66.04[2.600]	68.58[2.700]	54	15	7-147104-7
	88mm	63.50[2.500]	66.04[2.600]	52	15
60.96[2.400]		63.50[2.500]	50	15	7-147104-5
58.42[2.300]		60.96[2.400]	48	15	7-147104-4
55.88[2.200]		58.42[2.300]	46	15	7-147104-3
53.34[2.100]		55.88[2.200]	44	15	7-147104-2
72mm	50.80[2.000]	53.34[2.100]	42	15	7-147104-1
	48.26[1.900]	50.80[2.000]	40	15	7-147104-0
	45.72[1.800]	48.26[1.900]	38	15	6-147104-9
	43.18[1.700]	45.72[1.800]	36	15	6-147104-8
	40.64[1.600]	43.18[1.700]	34	15	6-147104-7
	38.10[1.500]	40.64[1.600]	32	15	6-147104-6
	35.56[1.400]	38.10[1.500]	30	15	6-147104-5
	33.02[1.300]	35.56[1.400]	28	15	6-147104-4
	30.48[1.200]	33.02[1.300]	26	15	6-147104-3
	27.94[1.100]	30.48[1.200]	24	15	6-147104-2
44mm	25.40[1.000]	27.94[1.100]	22	15	6-147104-1
	22.86[.900]	25.40[1.000]	20	15	6-147104-0
	20.32[.800]	22.86[.900]	18	15	5-147104-9
	17.78[.700]	20.32[.800]	16	15	5-147104-8
	15.24[.600]	17.78[.700]	14	15	5-147104-7
	12.70[.500]	15.24[.600]	12	15	5-147104-6
	10.16[.400]	12.70[.500]	10	15	5-147104-5
	7.62[.300]	10.16[.400]	8	15	5-147104-4
	5.08[.200]	7.62[.300]	6	15	5-147104-3
	2.54[.100]	5.08[.200]	4	15	5-147104-2
24mm	-	2.54[.100]	2	15	5-147104-1
FINISH	EIA TAPE WIDTH	B	A	NO.OF POSN.	PART NUMBER

THIS DRAWING IS A CONTROLLED DOCUMENT.		DWN M.BINNER 06NOV02	Tyco Electronics Corporation Harrisburg, Pa 17105-3608
DIMENSIONS: mm [INCHES]		CHK J.OLSON 06NOV02	
TOLERANCES UNLESS OTHERWISE SPECIFIED:		APVD J.OLSON 06NOV02	NAME RECEPTACLE ASSEMBLY, MOD IV, DOUBLE ROW, DUAL ENTRY, .100X.100CL, SURFACE MOUNT, AMPMODU
0 PLC ± - 1 PLC ± - 2 PLC ± .005[0.13] 3 PLC ± - 4 PLC ± - ANGLES ± -		PRODUCT SPEC -	
MATERIAL 1		FINISH SEE TABLE	SIZE CAGE CODE DRAWING NO RESTRICTED TO WEIGHT 114-25018 A2 00779 C=147104 - CUSTOMER DRAWING SCALE 1:1 SHEET 2 OF 2 REV J2