

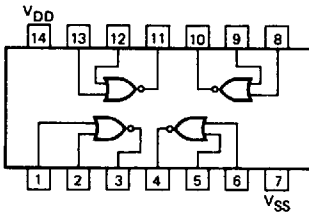
GD4001B

GD4002B

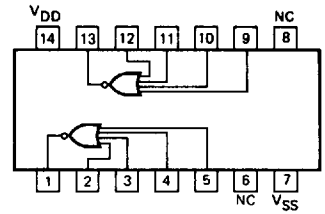
QUAD 2-INPUT NOR GATE • DUAL 4-INPUT NOR GATE

DESCRIPTION — These CMOS logic elements provide the positive input NOR function. The outputs are fully buffered for highest noise immunity and pattern insensitivity of output impedance.

4001B
LOGIC AND CONNECTION DIAGRAM
DIP (TOP VIEW)



4002B
LOGIC AND CONNECTION DIAGRAM
DIP (TOP VIEW)



NOTE:
The SO Package have the same pinouts
(Connection Diagram) as the Dual In-line
Package.

DC CHARACTERISTICS: V_{DD} as shown, $V_{SS} = 0$ V

SYMBOL	PARAMETER	LIMITS									UNITS	TEMP	TEST CONDITIONS See Note 1	
		$V_{DD} = 5$ V			$V_{DD} = 10$ V			$V_{DD} = 15$ V						
		MIN	TYP	MAX	MIN	TYP	MAX	MIN	TYP	MAX				
I_{DD}	Quiescent Power Supply Current	XC			1			2			4	μ A	MIN, 25°C	All inputs at 0 V or V_{DD}
					7.5			15			30		MAX	
	XM			0.25			0.5			1	μ A	MIN, 25°C		
				7.5			15			30		MAX		

AC CHARACTERISTICS: V_{DD} as shown, $V_{SS} = 0$ V, $T_A = 25^\circ$ C, 4001B only (See Note 2)

SYMBOL	PARAMETER	LIMITS									UNITS	TEST CONDITIONS See Note 2
		$V_{DD} = 5$ V			$V_{DD} = 10$ V			$V_{DD} = 15$ V				
		MIN	TYP	MAX	MIN	TYP	MAX	MIN	TYP	MAX		
t_{PLH}	Propagation Delay		60	110		25	60		20	48	ns	$C_L = 50$ pF, $R_L = 200$ k Ω Input Transition Times ≤ 20 ns
t_{PHL}			60	110		25	60		20	48		
t_{TLH}	Output Transition Time		60	135		30	70		20	45	ns	
t_{THL}			60	135		30	70		20	45		

AC CHARACTERISTICS: V_{DD} as shown, $V_{SS} = 0$ V, $T_A = 25^\circ$ C, 4002B only

SYMBOL	PARAMETER	LIMITS									UNITS	TEST CONDITIONS See Note 2
		$V_{DD} = 5$ V			$V_{DD} = 10$ V			$V_{DD} = 15$ V				
		MIN	TYP	MAX	MIN	TYP	MAX	MIN	TYP	MAX		
t_{PLH}	Propagation Delay		65	110		30	60		20	48	ns	$C_L = 50$ pF, $R_L = 200$ k Ω Input Transition Times ≤ 20 ns
t_{PHL}			70	110		30	60		23	48		
t_{TLH}	Output Transition Time		75	135		40	70		30	45	ns	
t_{THL}			60	135		23	70		15	45		

- NOTES:**
- Additional DC Characteristics are listed in this section under 4000B Series CMOS Family Characteristics.
 - Propagation Delays and Output Transition Times are graphically described in this section under 4000B Series CMOS Family Characteristics.

4028757 0004341 T37

TYPICAL ELECTRICAL CHARACTERISTICS

