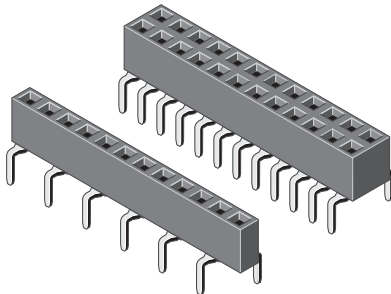


FEMALE HEADER „DUAL ENTRY“

ID: 097

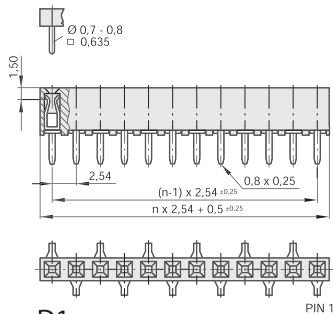
BL 1-50DX / BL 2-50DX

Series 401



TECHNICAL DATA

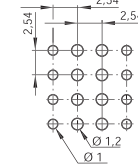
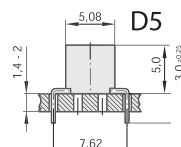
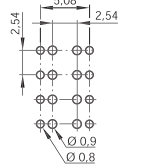
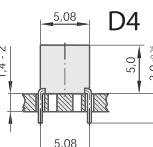
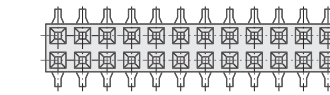
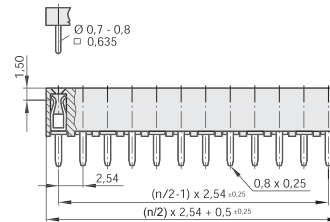
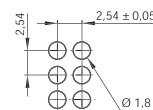
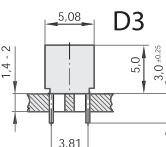
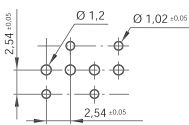
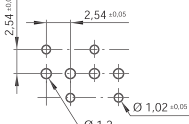
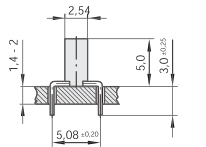
Pitch	2,54 mm
Insulating Material	high temp. thermoplast UL94V-0
Contact Material	phosphor bronze
Rated Current	3 Amp.
Rated Voltage	250 V _{AC/DC}
Withstanding Voltage	1000 V _{AC} for one minute
Operating Temperature	-40°C to +105°C
Maximum Soldering Temperature	260°C for 10 seconds



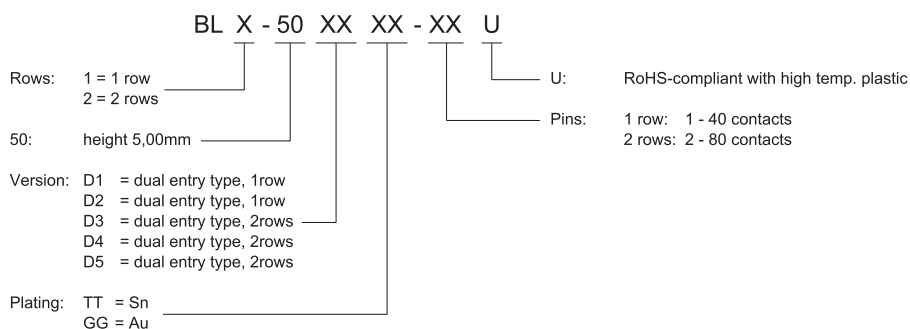
D1



D2



All dimensions in mm.
Other dimensions upon request.



7 | 2,54 mm