

## ULTRA FAST RECOVERY RECTIFIERS

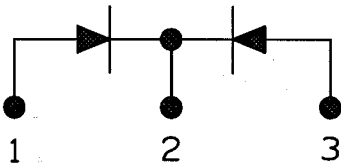
400V, 8A, 50ns  
 500V, 8A, 50ns  
 600V, 8A, 50ns

SDR08400 JAA, JAB  
 SDR08500 JAA, JAB  
 SDR08600 JAA, JAB

### FEATURES

- RUGGED PACKAGE
- HI-REL CONSTRUCTION
- CERAMIC EYELETS
- LEAD BENDING OPTIONS
- COPPER CORED 52 ALLOY PINS
- LOW IR LOSSES
- LOW THERMAL RESISTANCE
- OPTIONAL MIL-S-19500 SCREENING

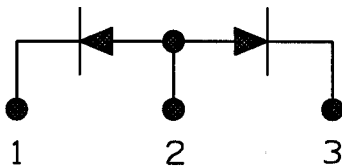
#### "K" SCHEMATIC



#### TERMINAL CONNECTIONS

- 1 = ANODE  
 2 = COMMON  
 3 = ANODE

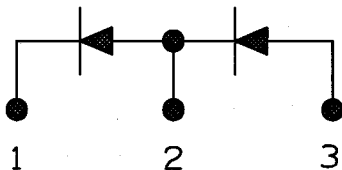
#### "L" SCHEMATIC



#### TERMINAL CONNECTIONS

- 1 = CATHODE  
 2 = COMMON  
 3 = CATHODE

#### "M" SCHEMATIC



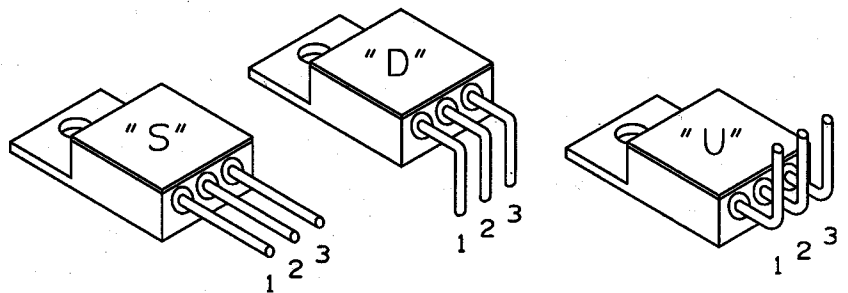
#### TERMINAL CONNECTIONS

- 1 = CATHODE  
 2 = COMMON  
 3 = ANODE

### MAXIMUM RATINGS PER DIODE

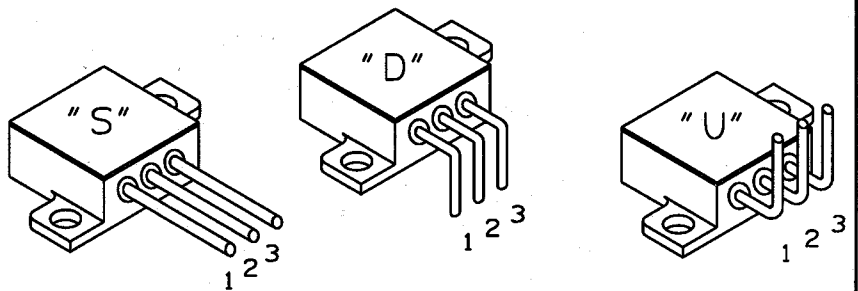
PARAMETER	SYMBOL	SDR 08400	SDR 08500	SDR 08600	UNITS
WORKING PEAK REVERSE VOLTAGE	VRRM	400	500	600	V
AVERAGE FORWARD CURRENT	IF(AV)	8			A
PEAK ONE CYCLE NON-REPETITIVE, SURGE CURRENT	IFSM	100			A
PEAK REPETITIVE REVERSE CURRENT	IRRM	2.2			A
OPERATING JUNCTION TEMPERATURE RANGE	TJ	+150			°C
STORAGE TEMPERATURE RANGE	Tstg	-55 TO +150			°C
THERMAL RESISTANCE JUNCTION TO CASE	RtJc	2.5			°C/W

### STANDARD BEND CONFIGURATIONS JAA



(CUSTOM BEND OPTIONS AVAILABLE)

### STANDARD BEND CONFIGURATIONS JAB



(CUSTOM BEND OPTIONS AVAILABLE)

### ELECTRICAL CHARACTERISTICS T<sub>c</sub> = 25°C (UNLESS OTHERWISE SPECIFIED)

PARAMETER	SYMBOL	TEST CONDITIONS			UNITS
MAX. PEAK FORWARD VOLTAGE ①	VF	TJ=25°C	IFM=8.0A	1.6	V
MAX. PEAK REVERSE CURRENT ①	IRM	TJ=25°C	VR=VRRM	60	μA
		TJ=125°C		1.5	mA
REVERSE RECOVERY	trr	IF=0.5A, IREC=0.25A	IR=1A	50	ns