

# HIGH VOLTAGE TRANSISTORS



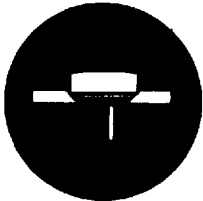
TO-36

TYPE NO.	PT @ 25°C	Ic MAX	@ Ic SUS		@ Vceo Iceo		@ VceX Ic (125°C)		hfe		@ Ic Vce		@ Vebo Iebo		@ Vce Ic (SAT)		VBE	ft MHz
	Watts	A	V	MA	V	MA	V	MA	MIN	MAX	A	V	V	MA	V	A	V	MIN
	2N2580	150	10	325	100	400	5			10	40	5*	5	5	50	.7	5	1.5
2N2580M	150	10	325	100	400	5			10	40	5*	5	5	50	.7	5	1.5	2
2N2581	150	10	325	100	400	5			25	65	5**	5	5	50	.7	5	1.7	2
2N2582	150	10	325	100	500	5			10	40	5*	5	5	50	.7	5	1.5	2
2N2583	150	10	325	100	500	5			25	65	5**	5	5	50	1.0	10	1.7	2
2N3079	150	10	325	100	200	5			10	50	5	5	5	50	.7	5	1.5	2
2N3080	150	10	325	100	300	5			10	50	5	5	5	50	.7	5	1.5	2

\*hfe min = 4 @ 10A

\*\*hfe min = 10 @ 10A

# HIGH VOLTAGE TRANSISTORS



TO-3

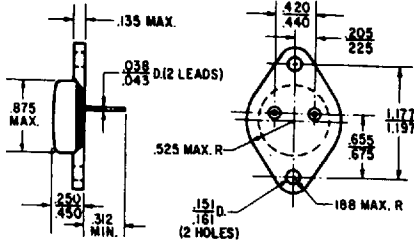
TYPE NO.	PT @ 25°C Watts	MAXIMUM RATINGS				hfe				Sat Voltages				Test Conditions		Iebo ma
		BVcbo	BVceo	BVebo	Ic	@		@		Vce	Vbe	Ic	Ib			
		V	V	V	A	MIN	MAX	A	V	V	V	A	A			
2N5838	100	275	275	6	3	8	40	2	2	1.0	2.0	3.0	.375	1		
2N5839	100	300	300	6	3	10	50	2	3	1.5	2.0	2.0	.2	1		
2N5840	100	375	375	6	3	10	50	2	3	1.5	2.0	2.0	.2	1		
2N5466	80	500	400	8	3.0	15	60	3.0	5	.5	1.5	3.0	.6			
2N5467	80	700	400	8	3.0	15	60	3.0	5	.5	1.5	3.0	.6			
2N6306	125	500	250	8	8.0	15	75	3.0	5	.8	1.2	3.0	.6			
2N6307	125	600	300	8	8.0	15	75	3.0	5	1.0	1.2	3.0	.6			
2N6308	125	700	350	8	8.0	12	60	3.0	5	1.0	1.2	3.0	.6			
SPC430	125	400	300	5	5.0	15	45	2.5	5	.9	1.5	2.5	.5	20		
SPC431	125	400	325	5	5.0	15	35	2.5	5	.7	1.5	2.5	.5	2		
SPC431M	125	400	325	5	5.0	15	35	2.5	5	.7	1.5	2.5	.5	2		

# Solid Power Corporation

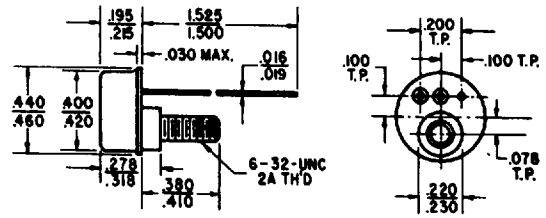
0043592 0000422 252

# CASE OUTLINES

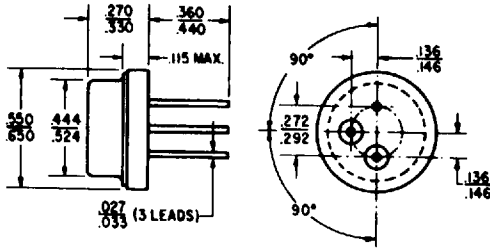
TO-3



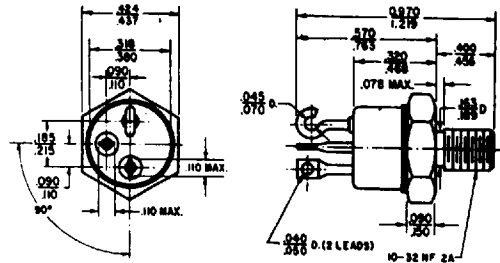
TO-57



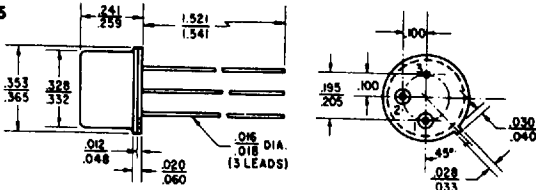
TO-8



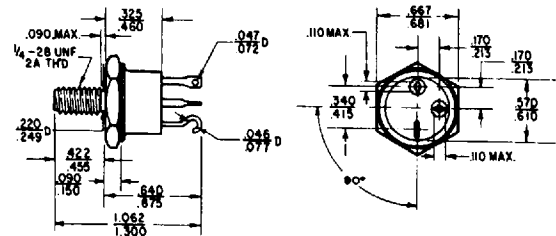
TO-9



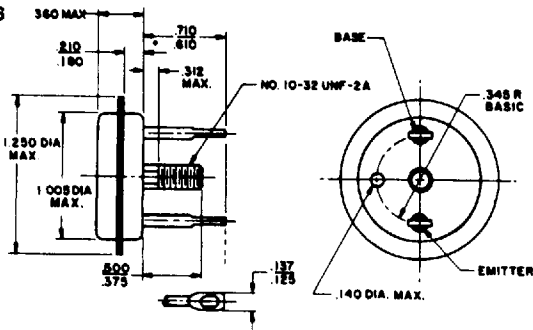
TO-5



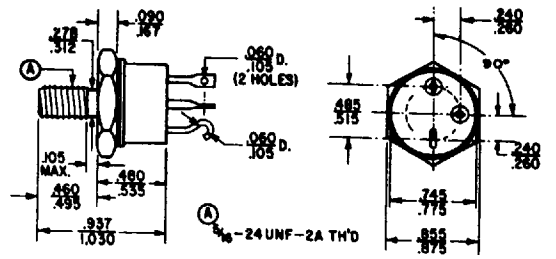
TO-81



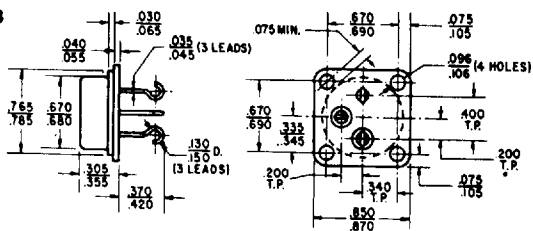
TO-36



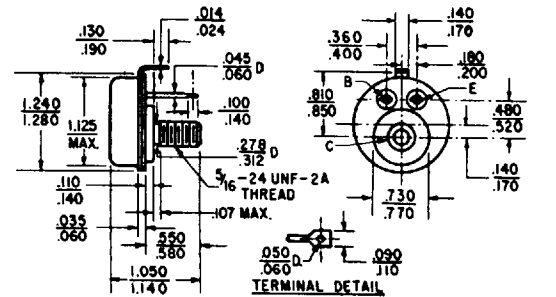
TO-63



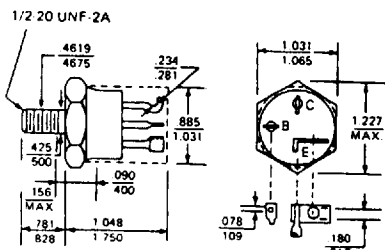
TO-53



TO-82



TO-114



31