

**FLEXPAC®  
LOCKING HEADER  
DOUBLE ROW  
STRAIGHT CONTACTS  
2MM (.079") x 2MM (.079")  
CENTER SPACING**



**PHYSICAL PROPERTIES**

INSULATION MATERIAL: Glass reinforced thermoplastic rated 94V-0  
COLOR: Black  
CONTACT MATERIAL: Copper alloy  
CONTACT PLATING: .000150 tin/lead alloy over .000050 nickel all over

**ELECTRICAL PROPERTIES**

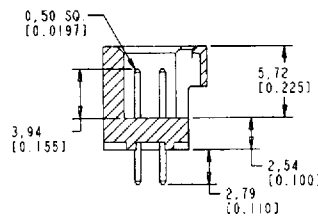
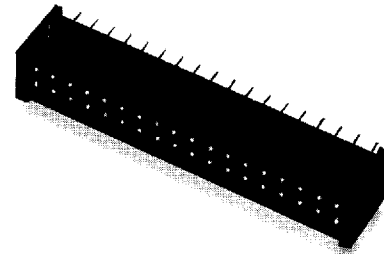
CURRENT RATING: 2.5 amps  
INSULATION RESISTANCE: >1 x 10<sup>9</sup> Ohms @ 500 VDC  
DWV: >500 VRMS at sea level

**ENVIRONMENTAL PROPERTIES**

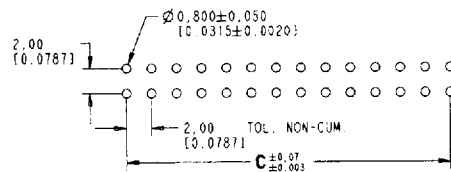
TEMPERATURE RATING:  
Processing: 2 min. @ 250° C max.  
Operating: -55° to 105° C

**MATING CONNECTOR**

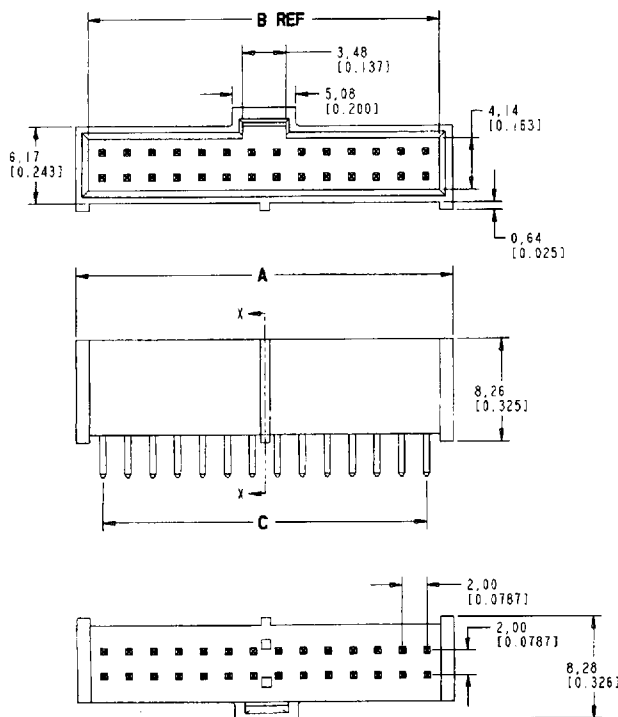
See page 154



SECTION X-X



\*NOTE: Latches not available on 8- 14 positions; positions 16 - 64 are with latches.



**Ordering Information**

| GOLD CONTACT PLATING | TIN CONTACT PLATING | NO. OF POS. | A             | DIMENSIONS B  | C             |
|----------------------|---------------------|-------------|---------------|---------------|---------------|
| F2H-08DSG            | F2H-08DST           | *8          | 10.31 (.406)  | 8.19 (.322)   | 6.00 (.236)   |
| F2H-10DSG            | F2H-10DST           | *10         | 12.32 (.485)  | 10.19 (.401)  | 8.00 (.315)   |
| F2H-12DSG            | F2H-12DST           | *12         | 14.33 (.564)  | 12.19 (.480)  | 10.00 (.394)  |
| F2H-14DSG            | F2H-14DST           | *14         | 16.31 (.642)  | 14.19 (.558)  | 12.00 (.472)  |
| F2H-16DSG            | F2H-16DST           | 16          | 18.31 (.721)  | 16.19 (.637)  | 14.00 (.551)  |
| F2H-18DSG            | F2H-18DST           | 18          | 20.32 (.800)  | 18.19 (.716)  | 16.00 (.630)  |
| F2H-20DSG            | F2H-20DST           | 20          | 22.30 (.878)  | 20.19 (.795)  | 18.00 (.709)  |
| F2H-22DSG            | F2H-22DST           | 22          | 24.30 (.957)  | 22.19 (.873)  | 20.00 (.787)  |
| F2H-24DSG            | F2H-24DST           | 24          | 26.31 (1.036) | 24.19 (.952)  | 22.00 (.866)  |
| F2H-26DSG            | F2H-26DST           | 26          | 28.32 (1.115) | 26.19 (1.031) | 24.00 (.945)  |
| F2H-28DSG            | F2H-28DST           | 28          | 30.33 (1.194) | 28.19 (1.110) | 26.00 (1.024) |
| F2H-30DSG            | F2H-30DST           | 30          | 32.33 (1.273) | 30.19 (1.189) | 28.00 (1.102) |
| F2H-32DSG            | F2H-32DST           | 32          | 34.34 (1.352) | 32.19 (1.268) | 30.00 (1.181) |
| F2H-34DSG            | F2H-34DST           | 34          | 36.32 (1.430) | 34.19 (1.346) | 32.00 (1.260) |
| F2H-36DSG            | F2H-36DST           | 36          | 38.33 (1.509) | 36.19 (1.425) | 34.00 (1.339) |
| F2H-38DSG            | F2H-38DST           | 38          | 40.34 (1.588) | 38.19 (1.504) | 36.00 (1.417) |
| F2H-40DSG            | F2H-40DST           | 40          | 42.32 (1.666) | 40.19 (1.582) | 38.00 (1.496) |
| F2H-42DSG            | F2H-42DST           | 42          | 44.32 (1.745) | 42.19 (1.661) | 40.00 (1.575) |
| F2H-44DSG            | F2H-44DST           | 44          | 46.33 (1.824) | 44.19 (1.740) | 42.00 (1.654) |
| F2H-46DSG            | F2H-46DST           | 46          | 48.31 (1.902) | 46.19 (1.818) | 44.00 (1.732) |
| F2H-48DSG            | F2H-48DST           | 48          | 50.32 (1.981) | 48.19 (1.897) | 46.00 (1.811) |
| F2H-50DSG            | F2H-50DST           | 50          | 52.30 (2.059) | 50.19 (1.975) | 48.00 (1.890) |
| F2H-52DSG            | F2H-52DST           | 52          | 54.33 (2.139) | 52.19 (2.055) | 50.00 (1.969) |
| F2H-54DSG            | F2H-54DST           | 54          | 56.31 (2.217) | 54.19 (2.133) | 52.00 (2.047) |
| F2H-56DSG            | F2H-56DST           | 56          | 58.32 (2.296) | 56.19 (2.212) | 54.00 (2.126) |
| F2H-58DSG            | F2H-58DST           | 58          | 60.33 (2.375) | 58.19 (2.291) | 56.00 (2.205) |
| F2H-60DSG            | F2H-60DST           | 60          | 62.31 (2.453) | 60.19 (2.369) | 58.00 (2.283) |
| F2H-62DSG            | F2H-62DST           | 62          | 64.31 (2.532) | 62.19 (2.448) | 60.00 (2.362) |
| F2H-64DSG            | F2H-64DST           | 64          | 66.32 (2.611) | 64.19 (2.527) | 62.00 (2.441) |