

FEATURES AND SPECIFICATIONS

Features and Benefits

- Radial taping enables high volume automatic placement of through hole components
- Sizes 7 to 14 circuits

Reference Information

Packaging: Radial tape
 Mates With: [52565](#)
 Designed In: Millimeters

Electrical

Voltage: 125V
 Current: 1.5A
 Contact Resistance: 30mΩ max.
 Dielectric Withstanding Voltage: 500V AC/1 min.
 Insulation Resistance: 1000 MΩ min.

Physical

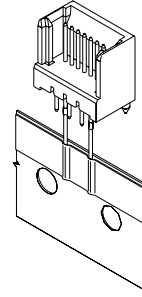
Housing: Glass-filled 6/6 nylon, UL 94V-0
 Contact: Brass
 Plating: Tin
 Operating Temperature: -40 to +105°C



1.25mm (.049") Pitch Board-to-Board Header

53339

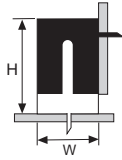
Radial Taping



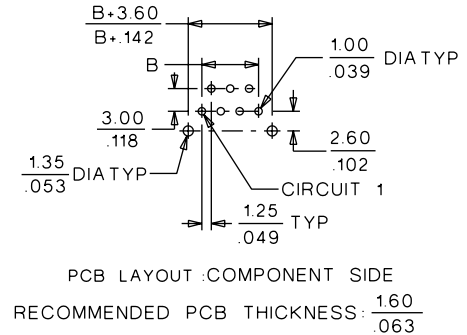
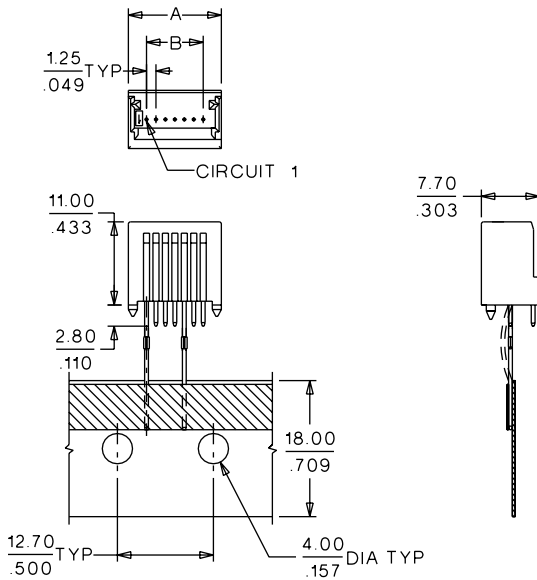
0.40 to 1.60mm (.016 to .063") Pitch

A

Mating Dimensions
 53339 • 52565
 H=7.8mm W=11.0mm



CATALOG DRAWING (FOR REFERENCE ONLY)



ORDERING INFORMATION AND DIMENSIONS

| Circuits | Order No. | Dimension | |
|----------|------------|--------------|--------------|
| | | A | B |
| 7 | 53339-0790 | 12.30 (.484) | 7.50 (.295) |
| 8 | 53339-0890 | 13.55 (.533) | 8.75 (.344) |
| 9 | 53339-0990 | 14.80 (.582) | 10.00 (.393) |
| 10 | 53339-1090 | 16.05 (.631) | 11.25 (.442) |
| 11 | 53339-1190 | 17.30 (.681) | 12.50 (.492) |
| 12 | 53339-1290 | 18.55 (.730) | 13.75 (.541) |
| 13 | 53339-1390 | 19.80 (.779) | 15.00 (.590) |
| 14 | 53339-1490 | 21.05 (.828) | 16.25 (.639) |