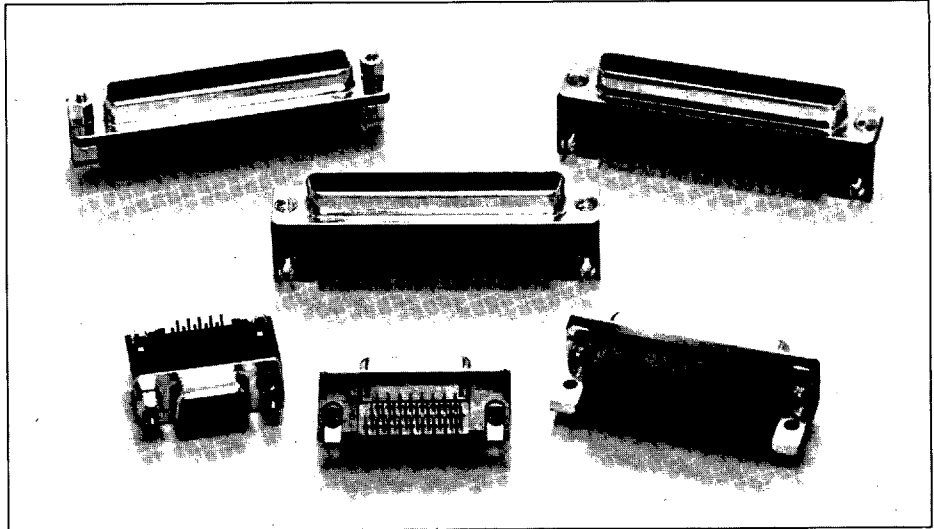


# DOUBLE DENSITY METAL SHELL RECEPTACLES

15, 26, 44 AND 62 POSITION RIGHT ANGLE P.C. MOUNT CONNECTORS

## GENERAL DESCRIPTION

Viking's Double Density D-Subminiature receptacles offer approximately 70% higher density than standard D-Subminiatures. With four configurations of 15, 26, 44, and 62 positions, these three-row, metal-shell, right-angle connectors provide significant space and cost savings to the packaging engineer. Higher density is achieved by putting 15 positions in a 9-position size, 26 in a 15-position size, etc. Viking's Double-Density D-Subminiature Connectors are designed and manufactured to provide maximum reliability and economy.



## PRODUCT FEATURES

### DESIGN FLEXIBILITY

- Fully intermateable with all other high-density D-Subminiatures
- Generous lead-in and chamfered edges make these connectors ideal for blind mating applications
- 15, 26, 44, 62 contact configurations
- Metal shell provides high level of EMI/RFI shielding

- 3 choices of selective gold plating (flash, 10 or 30 microinches)
- 3 ground styles permit best choice for specific application
- 3 mounting options available with any grounding style

### SPACE SAVERS

- Permit smaller board size
- Permit increased number of components

- .350 footprint

### RUGGED CONSTRUCTION

- Metal shell is bright nickel plated, cold-rolled steel
- Insulator is high-quality, U.L. 94V-0 approved, flame-retardant thermoplastic
- Rigid U-channel contact tails for fast, easy insertion into P.C. boards
- U.L. listed

## ORDERING INFORMATION

<b>DD</b>	<b>Z</b>	<b>2</b>	<b>F</b>	<b>R</b>	<b>5</b>	<b>4</b>
-----------	----------	----------	----------	----------	----------	----------

### SERIES ORDER CODE:

**DD:** Double Density Receptacle Series

### CONTACT PLATING CODES:

- H:** selective gold flash over nickel
- S:** .000010 selective gold plating over nickel
- Z:** .000030 selective gold plating over nickel

### NUMBER OF CONTACTS CODES:

- 2:** 15 position
- 3:** 26 position
- 4:** 44 position
- 5:** 62 position

### GROUNDING STYLE CODES:

- 1:** Bottom Ground
- 3:** Top Ground
- 4:** Compliant Ground

### MOUNTING STYLE CODES:

- 1:** Thru Hole
- 5:** Threaded Insert
- 7:** Hex Standoff

### PROFILE CODE:

- R:** Right Angle

### PART IDENTIFIER CODE:

- F:** Receptacle

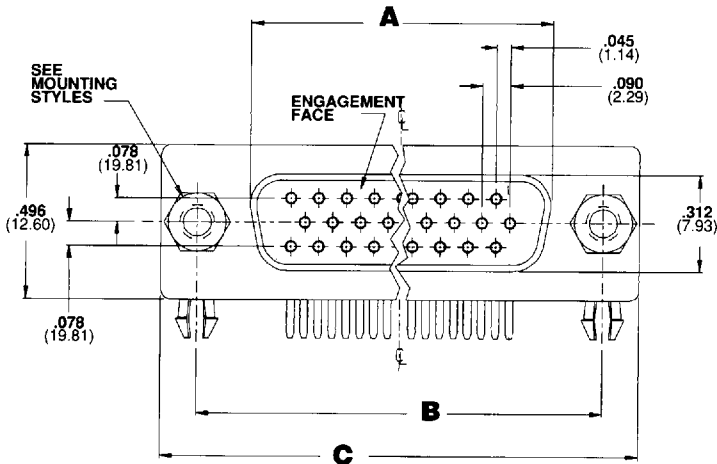
# DOUBLE DENSITY METAL SHELL RECEPTACLES

.590 RIGHT ANGLE P.C. MOUNT CONNECTORS

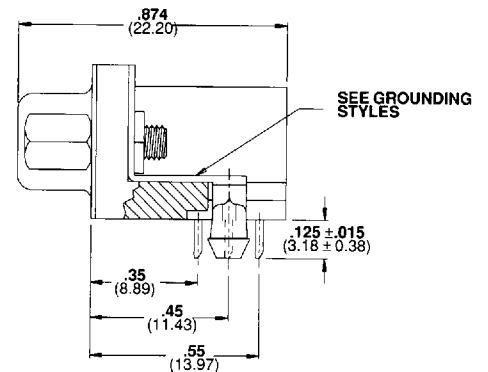
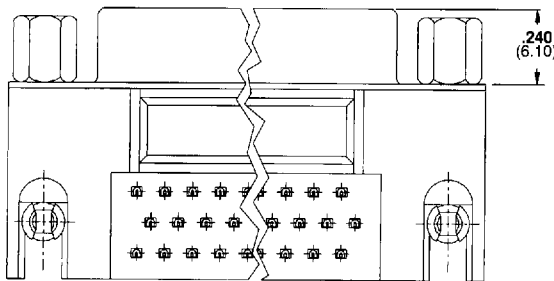
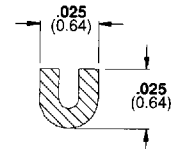
## DESIGN INFORMATION

15, 26, 44 AND 62 POSITION ASSEMBLIES

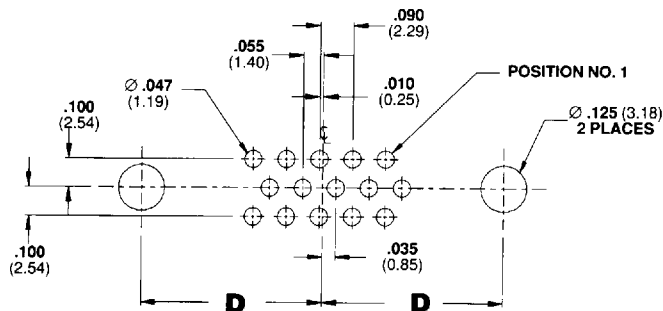
### RIGHT ANGLE FOOTPRINT (ORDER CODE: R)



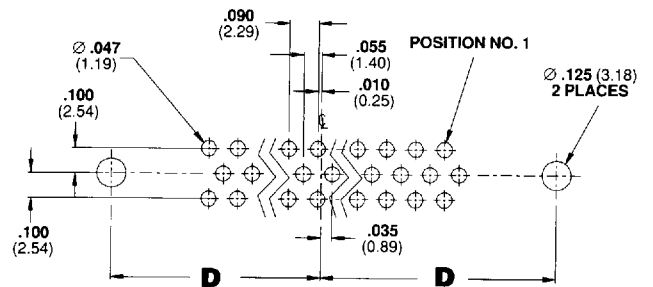
### CONTACT TERMINAL CROSS SECTION



### RECOMMENDED P.C.B. HOLE PATTERN FOR 15 POSITION RECEPTACLE ONLY



### RECOMMENDED P.C.B. HOLE PATTERN FOR 26, 44, AND 62 POSITION RECEPTACLES



### TABLE OF DIMENSIONS: Receptacles

NUMBER OF POSITIONS	A ± .010 (0.25)	B ± .010 (0.25)	C ± .015 (0.38)	D ± .005 (0.13)
15	.640 (16.26)	.984 (24.99)	1.214 (30.84)	.492 (12.50)
26	.967 (24.56)	1.312 (33.32)	1.545 (39.24)	.656 (16.66)
44	1.508 (38.30)	1.852 (47.04)	2.088 (53.04)	.926 (23.52)
62	2.156 (54.76)	2.500 (63.50)	2.730 (69.34)	1.250 (31.75)

NOTE: Dimensions are in inches and (millimeters). Tolerance ± .010 (0.25) unless otherwise specified.

# DOUBLE DENSITY METAL SHELL RECEPTACLES

.590 RIGHT ANGLE P.C. MOUNT CONNECTORS

## SPECIFICATIONS

### ELECTRICAL

**Current Rating:** 1.5 amps max.  
**Insulation Resistance:**  
 5000 megohms min.  
**Contact Resistance:**  
 10 milliohms max., mated  
**Dielectric Withstanding Voltage:**  
 1000 VAC min.

### MECHANICAL

**Contact Retention:** 3 lbs. min.  
**Durability, Mating Cycles:**  
 CODE H: 25 cycles  
 CODE S: 100 cycles  
 CODE Z: 500 cycles  
**Ambient Temperature Range:**  
 -67°F to +257°F (-55° C to +125° C)

### ENGAGEMENT & SEPARATION FORCES

**Insertion:** 12 oz. max. per contact  
**Withdrawal:** 0.7 oz. min. per contact

### MATERIALS AND FINISHES

#### INSULATOR:

Glass-filled thermoplastic, U.L. 94V-0;  
 Color, black

#### CONTACT: Copper Alloy

#### CONTACT FINISH:

**Underplate**  
 Nickel all over (.000050 min. thick)  
**Engagement Area:**  
 CODE H: gold flash  
 CODE S: .000010 gold  
 CODE Z: .000030 gold  
**Termination Area:** .000150 min. thick  
 tin-lead

#### CONNECTOR SHELL:

Steel, nickel plated

#### MOUNTING HARDWARE:

Brass with nickel plate

#### GROUNDING BRACKET:

Brass with tin-lead plating.

### APPROVALS, CERTIFICATIONS



All D-Subminiature connectors are listed under the component program of Underwriters Laboratories, Inc., File E 74125.

Specifications contained herein are subject to change without notice. Consult Viking for current data.

## PRODUCT OPTIONS

### NUMBER OF CONTACTS

**ORDER CODE 2:** 15 contacts  
**ORDER CODE 3:** 26 contacts  
**ORDER CODE 4:** 44 contacts  
**ORDER CODE 5:** 62 contacts

### CONTACT PLATING

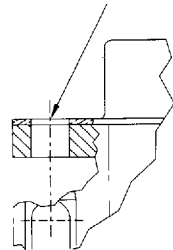
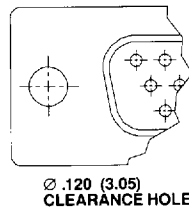
**ORDER CODE H:** selective gold flash  
**ORDER CODE S:** .000010 selective gold  
**ORDER CODE Z:** .000030 selective gold

### MOUNTING STYLES:

Viking offers three mounting styles for these connectors: Code 1, Thru Hole; Code 5, 4-40 UNC-2B threaded insert; Code 7, 4-40 UNC-2B Hex Stand-off. Key performance characteristics include 15 lbs. minimum axial force and torque retention of 6 inch-pounds.

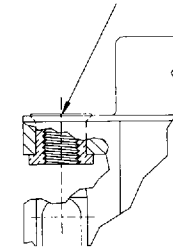
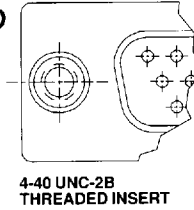
#### THRU HOLE

**ORDER CODE:**  
 1



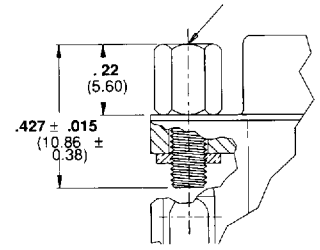
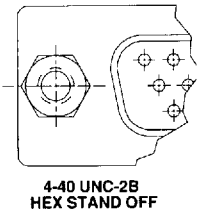
#### THREADED INSERT

**ORDER CODE:**  
 5



#### HEX STAND-OFF

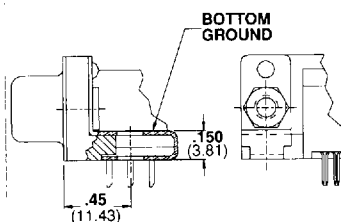
**ORDER CODE:**  
 7



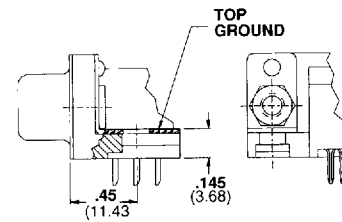
### GROUNDING STYLES:

Viking offers metal shells for EMI/RFI shielding with several methods of grounding to the P.C. board, for electrical ground path continuity. These grounding options are available with all of Viking's mounting styles.

**ORDER CODE:**  
 1



**ORDER CODE:**  
 3



**ORDER CODE:**  
 4

