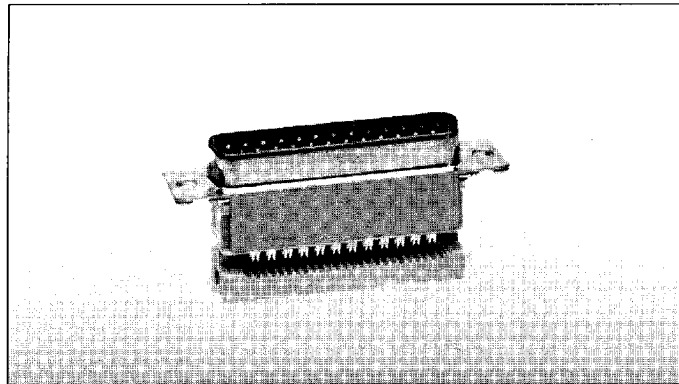
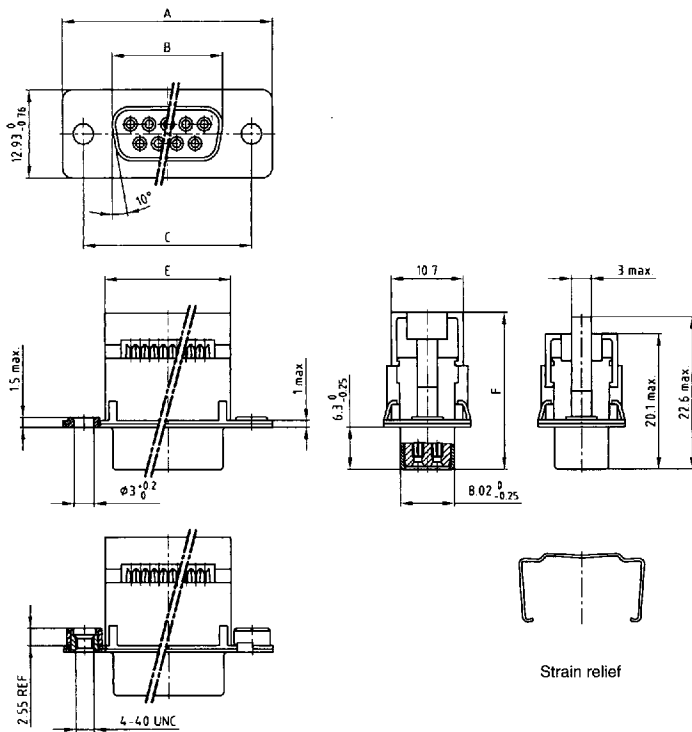


D-Subminiature connectors

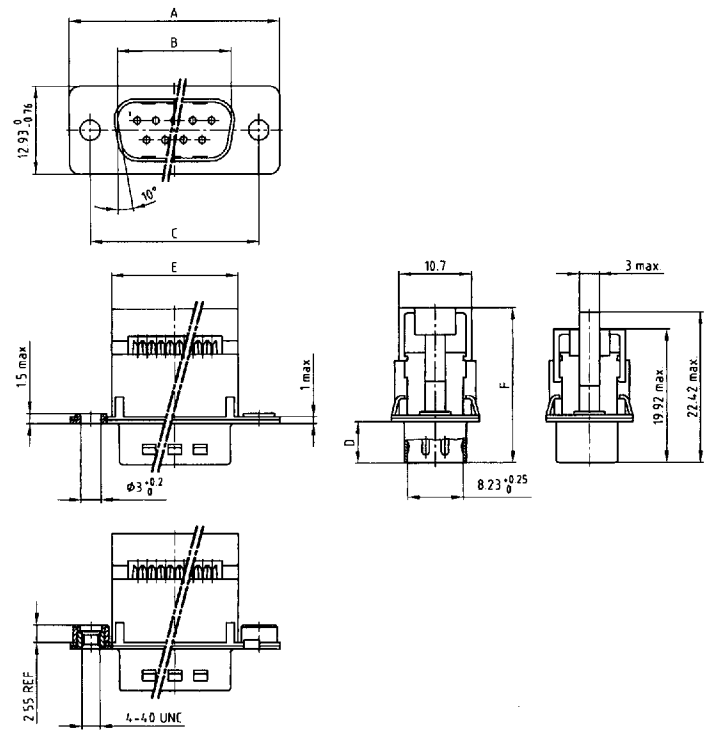


IDC connector for flat cable

Socket connector



Stiftleiste – Plug connector



Kat 1 i O2A

No. of pos.	A - 0,76	B - 0,25	C	E - 0,1	F max.
9	31,19	16,46	25,00 ^{+0,12} _{-0,13}	18,73	23,3
15	39,52	24,79	33,30 ^{+0,15} _{-0,16}	26,86	22,6
25	53,42	38,50	47,04 ^{±0,13}	40,78	23,3
37	69,70	55,96	63,50 ^{±0,13}	57,04	22,6

Kat 1 i O3A

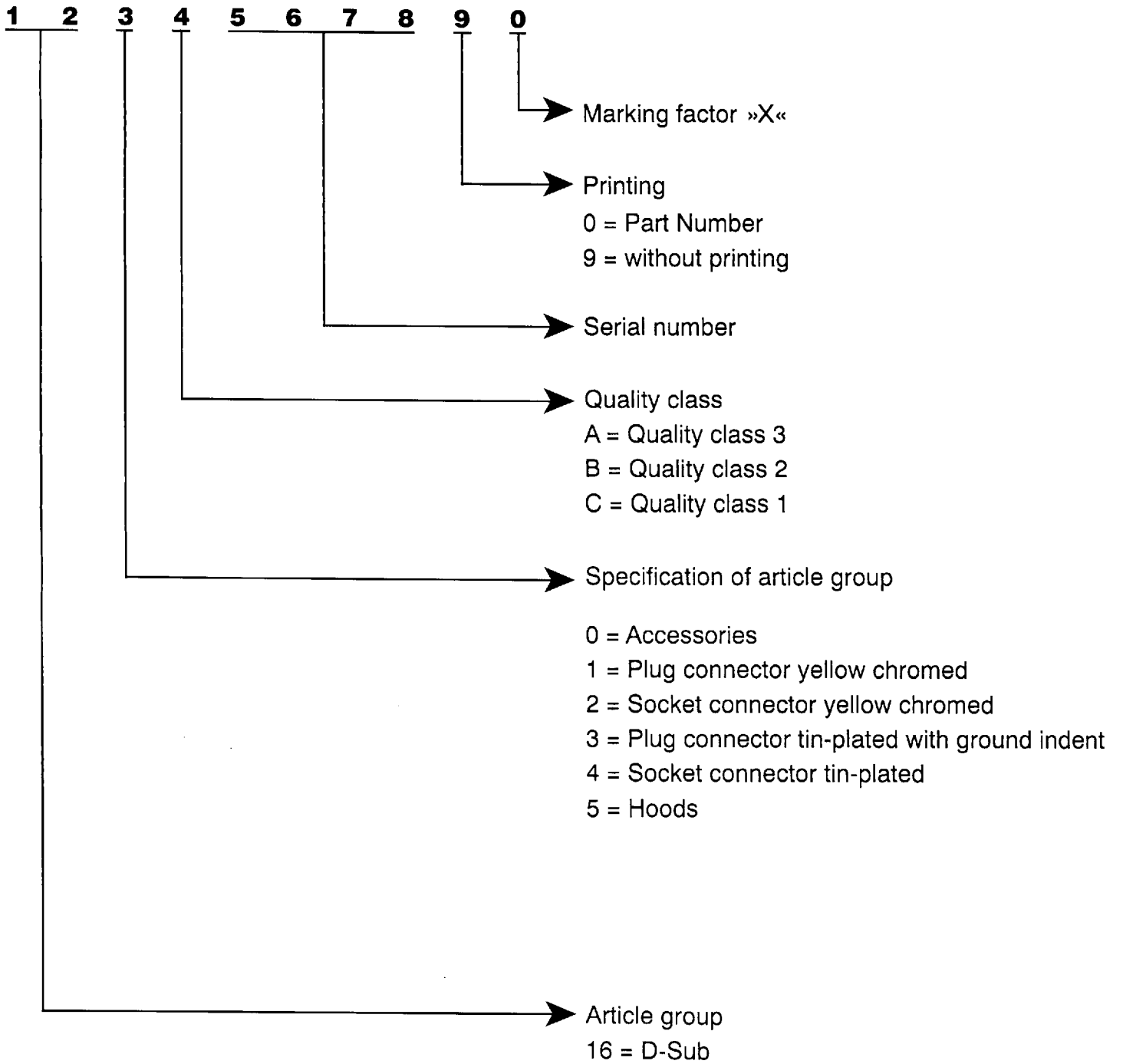
No. of pos.	A - 0,76	B + 0,25	C	D - 0,3	E - 0,1	F max.
9	31,19	16,79	25,00 ^{+0,12} _{-0,13}	6,12	18,73	23,2
15	39,52	25,12	33,30 ^{+0,15} _{-0,16}	6,12	26,86	22,5
25	53,42	38,84	47,04 ^{±0,13}	5,99	40,78	23,2
37	69,70	55,30	63,50 ^{±0,13}	5,99	57,04	22,5

Part numbers

No. of Pos.	Socket connector tin plated		
	Ø 3	4-40 UNC	strain relief
9	CDF 09 S 162 A 11899 X	CDF 09 SUN 162 A 18669 X	CDZ 09 S 160 X 10019 X
15	CDF 15 S 162 A 11909 X	CDF 15 SUN 162 A 18679 X	CDZ 15 S 160 X 10029 X
25	CDF 25 S 162 A 11919 X	CDF 25 SUN 162 A 18689 X	CDZ 25 S 160 X 10039 X
37	CDF 37 S 162 A 11929 X	CDF 37 SUN 162 A 18699 X	CDZ 37 S 160 X 10049 X

No. of Pos.	Plug connector tin plated with ground indent	
	Ø 3	4-40 UNC
9	CDS 09 SF 161 A 13499 X	CDS 09 SFUN 161 A 18259 X
15	CDS 15 SF 161 A 13509 X	CDS 15 SFUN 161 A 18269 X
25	CDS 25 SF 161 A 13519 X	CDS 25 SFUN 161 A 18279 X
37	CDS 37 SF 161 A 13529 X	CDS 37 SFUN 161 A 18289 X

Part Number



Order example

Plug connector Solder bucket 25 pos. without printing	
Quality class	Part Number
3	CDS 25 L 161 A 10039 X
2	CDS 25 L 161 B 10039 X
1	CDS 25 L 161 C 10039 X

9017935 0000071 237

Technical Data	D-Sub Standard	D-Sub High Density
Initial contact resistance	≤ 10 mΩ	≤ 10 mΩ
Initial insulation resistance	Quality class 1 ≥ 5GΩ Quality class 2 ≥ 5GΩ Quality class 3 ≥ 5GΩ	Quality class 1 ≥ 5GΩ Quality class 2 ≥ 5GΩ Quality class 3 ≥ 5GΩ
Clearance distance	contact–contact ≥ 1.0 mm contact–ground ≥ 1.2 mm	≥ 0.6 mm
Creepage distance	contact–contact ≥ 1.0 mm contact–ground ≥ 1.2 mm	≥ 0.6 mm
Test voltage V. r. m. s./NM	1000 V	1000 V
Working voltage/Insulation group* * nach SEV 50 V – acc. to SEV 50 V	125 V ≈	60 V ≈
Working current 20° C	5 A max.	25 A max.
Operating temperature	- 55° C – + 125° C	- 55° C – + 125° C
Moulding material	Polyester GF UL 94 V-O	PA 6.6 GF 25 UL 94 V-O
Contact material	Copper alloy	Copper alloy
Contact finish	hard-gold-plated over nickel	hard-gold-plated over nickel
Shell	Sheet steel, zinc lined and yellow chromate Sheet steel, nickel underneath and tin-plated	Sheet steel, nickel underneath and tin-plated
Insertion and withdrawal forces	9-polig/way 30 N 15-polig/way 50 N 25-polig/way 83 N 37-polig/way 123 N 50-polig/way 167 N	15-polig/way 50 N 26-polig/way 84 N 44-polig/way 120 N 62-polig/way 170 N 78-polig/way 200 N
Quality classes	Quality class 1 Quality class 2 Quality class 3	500 mating cycles 200 mating cycles 50 mating cycles