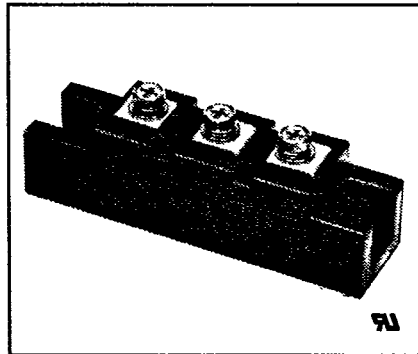
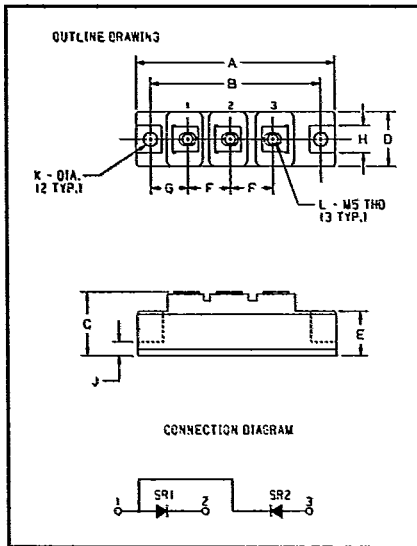




CD410460
CD410860

Powerex, Inc., Hillis Street, Youngwood, Pennsylvania 15697 (412) 925-7272
Powerex Europe, S.A., 428 Avenue G. Durand, BP107, 72003 Le Mans, France (43) 72.75.15

Dual Diode
POW-R-BLOK™ Modules
60 Amperes/400-800 Volts



CD410460, CD410860
Dual Diode
POW-R-BLOK™ Modules
60 Amperes/400-800 Volts

400-800 Volts CD410460,
CD410860 Outline Drawing

Dimension	Inches	Millimeters
A	3.681 Max.	93.5 Max.
B	3.150	80
C	1.181 Max.	30 Max.
D	1.024 Max.	26 Max.
E	.827	21
F	.787	20
G	.689	17.5
H	.492	12.5
J	.256	6.5
K	.256 Dia.	Dia. 6.5
L	M5 Metric	M5

Description

Powerex Dual Diode POW-R-BLOK™ Modules are designed for use in applications requiring AC to DC rectification in isolated packaging. The modules are isolated for easy mounting with other components on common heatsinks. POW-R-BLOK™ has been tested and recognized by Underwriters Laboratories (QQX2 Power Switching Semiconductors).

Features:

- Isolated Mounting
- Glass Passivated Chips
- Metal Baseplate
- Low Thermal Impedance
- UL Recognized

Applications:

- Battery Supplies
- DC Motor Power Supplies
- AC Motor Power Supplies

Ordering Information

Example: Select the complete eight digit module part number you desire from the table — i.e. CD410860 is an 800 Volt, 60 Ampere Dual Diode POW-R-BLOK™ Module.

Type	V _{RRM} Volts (x100)	Current Rating Amperes (60)
CD41	04	60
	08	



Powerex, Inc., Hillis Street, Youngwood, Pennsylvania 15697 (412) 925-7272

Powerex Europe, S.A., 428 Avenue G. Durand, BP107, 72003 Le Mans, France (43) 72.75.15

CD410460, CD410860
Dual Diode POW-R-BLOK™ Modules
 60 Amperes/400-800 Volts

Absolute Maximum Ratings

Characteristics	Symbol	CD410460	CD410860	Units
Peak Reverse Blocking Voltage	V_{RRM}	400	800	Volts
Transient Peak Reverse Blocking Voltage (Non-Repetitive) $t < 5$ ms	V_{RSM}	480	960	Volts
DC Reverse Blocking Voltage	$V_{R(DC)}$	320	640	Volts
RMS On-State Current	$I_{F(RMS)}$	95	95	Amperes
Average On-State Current, $T_C = 90^\circ\text{C}$	$I_{F(AV)}$	60	60	Amperes
Peak One-Cycle Surge (Non-Repetitive) On-State Current (60Hz)	I_{FSM}	1200	1200	Amperes
Peak One-Cycle Surge (Non-Repetitive) On-State Current (50Hz)	I_{FSM}	1095	1095	Amperes
I^2t (for Fusing), 8.3 milliseconds	I^2t	6000	6000	A^2sec
Storage Temperature	T_{STG}	-40 to 125	-40 to 125	$^\circ\text{C}$
Operating Temperature	T_J	-40 to 125	-40 to 125	$^\circ\text{C}$
Maximum Mounting Torque M6 Mounting Screw	---	26	26	in.-lb.
Maximum Terminal Torque M5 Terminal Screw	---	17	17	in.-lb.
Module Weight (Typical)	---	160	160	Grams
V Isolation	V_{RMS}	2000	2000	Volts



Powerex, Inc., Hillis Street, Youngwood, Pennsylvania 15697 (412) 925-7272

Powerex Europe, S.A., 428 Avenue G. Durand, BP107, 72003 Le Mans, France (43) 72.75.15

CD410460, CD410860
Dual Diode POW-R-BLOK™ Modules
60 Amperes/400-800 Volts

Electrical and Thermal Characteristics, $T_J=25^\circ\text{C}$ unless otherwise specified

Characteristic	Symbol	Test Conditions	CD410460	CD410860	Units
Blocking State Maximums					
Reverse Leakage Current, Peak	I_{RRM}	$T_J = 125^\circ\text{C}$, $V_{RRM} = \text{rated}$	10		mA
Conducting State Maximums					
Peak On-State Voltage	V_{FM}	$I_{FM} = 180\text{A}$	1.25		Volts
Thermal Maximums					
Thermal Resistance, Junction to Case	$R_{\theta JC}$	Per Device	0.5		$^\circ\text{C/Watt}$
Thermal Resistance, Case to Sink Lubricated	$R_{\theta CS}$	Per Device	0.2		$^\circ\text{C/Watt}$



Powerex, Inc., Hillis Street, Youngwood, Pennsylvania 15697 (412) 925-7272
 Powerex Europe, S.A., 428 Avenue G. Durand, BP107, 72003 Le Mans, France (43) 72.75.15

CD410460, CD410860
 Dual Diode POW-R-BLOK™ Modules
 60 Amperes/400-800 Volts

