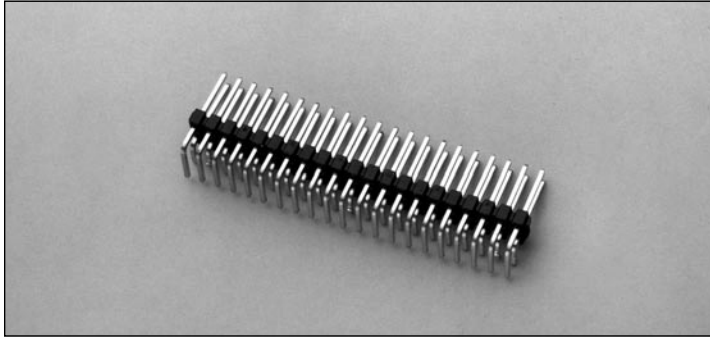
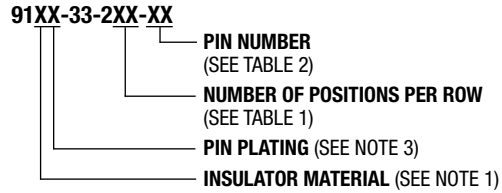


# .100" (2.54mm) Dual Row, Through Hole, Right Angle Header with Retention Tails

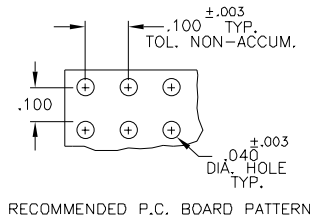
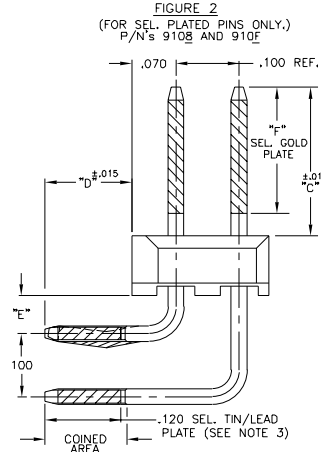
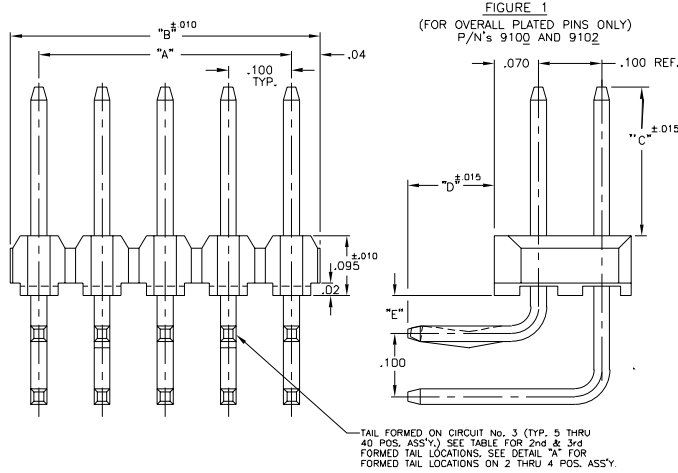
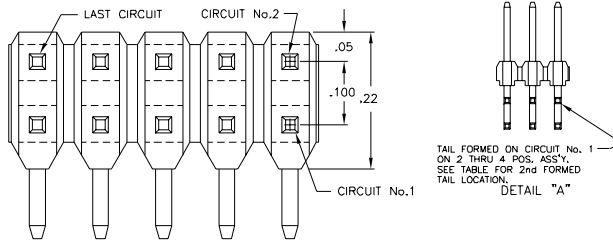


## 9100 SERIES ("POST/BOXE")

PART NUMBER LEGEND



## MATING CONNECTORS: 9000 SERIES



### NOTES:

- INSULATOR MATERIAL : 910X - GLASS FILLED POLYESTER (PET); UL 94V-0; COLOR: BLACK  
911X - GLASS FILLED POLYESTER (PCT); UL 94V-0; COLOR: BLACK
- PIN MATERIAL : PHOSPHOR BRONZE
- PIN FINISH :  
9100 - BRITE TIN OVER NICKEL PLATE.  
9102 - .000015 GOLD OVER NICKEL PLATE.  
9108 - .000050/.000150 NICKEL PLATE ALL OVER; .000030 SEL. GOLD PLATE AS INDICATED; .0001-.0002 SEL. 90/10 TIN/LEAD ON SOLDER TAIL AS INDICATED.  
910E - .000050/.000150 NICKEL PLATE ALL OVER; .000015 SEL. GOLD PLATE AS INDICATED; .0001-.0002 SEL. 90/10 TIN/LEAD ON SOLDER TAIL AS INDICATED.

| PART No. | "C"       | "D"       | "E"  | "F"  |
|----------|-----------|-----------|------|------|
| -01      | .230      | 1.110     | .06  | .200 |
| -02      | .320      | 1.110     | .06  | .200 |
| -03      | .225±.008 | .085±.008 | .035 | .200 |
| -04      | .342±.008 | 1.102     | .06  | .200 |

| PART NUMBER    | NO. OF CIRCUITS | DIM. A | DIM. B | 2nd FORMED TAIL LOCATION |     | CIRCUIT No. |
|----------------|-----------------|--------|--------|--------------------------|-----|-------------|
|                |                 |        |        | "C"                      | "D" |             |
| 910X-33-202-XX | 4               | 1.100  | 1.190  | 3                        | -   | -           |
| -203-          | 6               | 2.200  | 2.290  | 5                        | -   | -           |
| -204-          | 8               | 3.300  | 3.390  | 7                        | -   | -           |
| -205-          | 10              | 4.400  | 4.490  | 7                        | -   | -           |
| -206-          | 12              | 5.500  | 5.590  | 9                        | -   | -           |
| -207-          | 14              | 6.600  | 6.690  | 11                       | -   | -           |
| -208-          | 16              | 7.700  | 7.790  | 13                       | -   | -           |
| -209-          | 18              | 8.800  | 8.890  | 15                       | -   | -           |
| -210-          | 20              | 9.900  | 9.990  | 17                       | -   | -           |
| -211-          | 22              | 11.000 | 11.090 | 19                       | -   | -           |
| -212-          | 24              | 12.100 | 12.190 | 21                       | -   | -           |
| -213-          | 26              | 13.200 | 13.290 | 23                       | -   | -           |
| -214-          | 28              | 14.300 | 14.390 | 25                       | -   | -           |
| -215-          | 30              | 15.400 | 15.490 | 27                       | -   | -           |
| -216-          | 32              | 16.500 | 16.590 | 29                       | -   | -           |
| -217-          | 34              | 17.600 | 17.690 | 31                       | -   | -           |
| -218-          | 36              | 18.700 | 18.790 | 33                       | -   | -           |
| -219-          | 38              | 19.800 | 19.890 | 35                       | -   | -           |
| -220-          | 40              | 20.900 | 20.990 | 37                       | -   | -           |
| -221-          | 42              | 22.000 | 22.090 | 39                       | 21  | -           |
| -222-          | 44              | 23.100 | 23.190 | 41                       | 21  | -           |
| -223-          | 46              | 24.200 | 24.290 | 43                       | 23  | -           |
| -224-          | 48              | 25.300 | 25.390 | 45                       | 23  | -           |
| -225-          | 50              | 26.400 | 26.490 | 47                       | 25  | -           |
| -226-          | 52              | 27.500 | 27.590 | 49                       | 25  | -           |
| -227-          | 54              | 28.600 | 28.690 | 51                       | 27  | -           |
| -228-          | 56              | 29.700 | 29.790 | 53                       | 27  | -           |
| -229-          | 58              | 30.800 | 30.890 | 55                       | 29  | -           |
| -230-          | 60              | 31.900 | 31.990 | 57                       | 29  | -           |
| -231-          | 62              | 33.000 | 33.090 | 59                       | 31  | -           |
| -232-          | 64              | 34.100 | 34.190 | 61                       | 31  | -           |
| -233-          | 66              | 35.200 | 35.290 | 63                       | 33  | -           |
| -234-          | 68              | 36.300 | 36.390 | 65                       | 33  | -           |
| -235-          | 70              | 37.400 | 37.490 | 67                       | 35  | -           |
| -236-          | 72              | 38.500 | 38.590 | 69                       | 35  | -           |
| -237-          | 74              | 39.600 | 39.690 | 71                       | 37  | -           |
| -238-          | 76              | 40.700 | 40.790 | 73                       | 37  | -           |
| -239-          | 78              | 41.800 | 41.890 | 75                       | 39  | -           |
| 910X-33-240-XX | 80              | 42.900 | 42.990 | 77                       | 39  | -           |