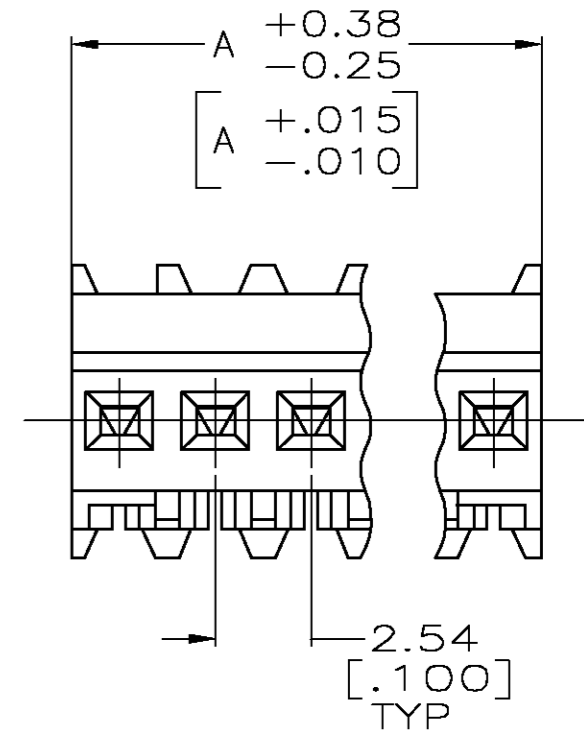
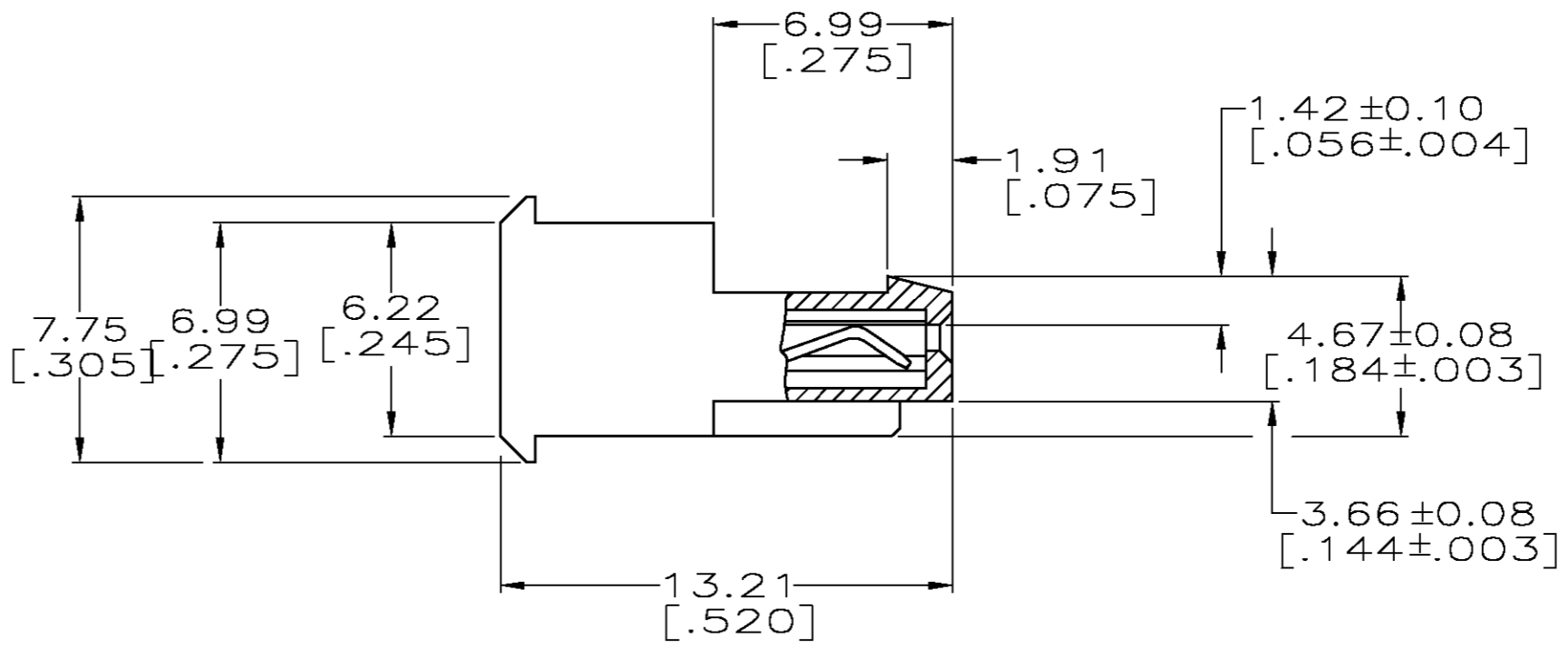
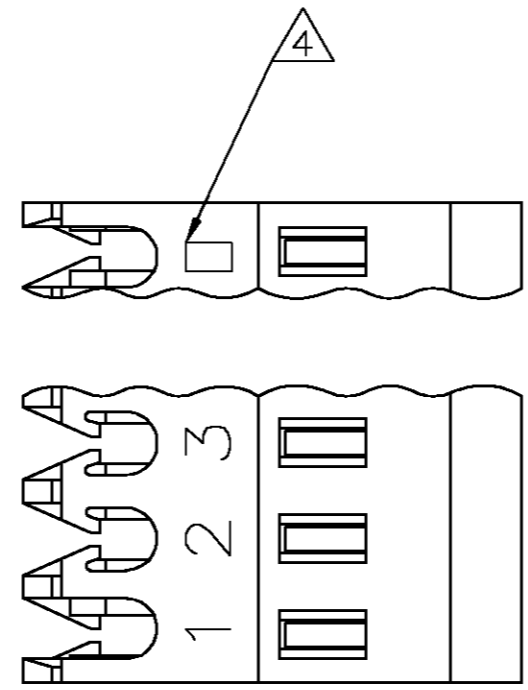


THIS DRAWING IS UNPUBLISHED. RELEASED FOR PUBLICATION
 © COPYRIGHT BY TYCO ELECTRONICS CORPORATION. ALL RIGHTS RESERVED.

LOC	DIST	REVISIONS			
P	LTR	DESCRIPTION	DATE	DWN	APVD
CM	00	REV PER ECN 0G3B-0324-03	11JUN03	SC	DB



YES/NO	DIM A	NO. OF CIRCUITS	PART NO.
YES	71.12 [2.800]	28	5-640620-8
YES	68.58 [2.700]	27	5-640620-7
YES	66.04 [2.600]	26	5-640620-6
YES	63.50 [2.500]	25	5-640620-5
YES	60.96 [2.400]	24	5-640620-4
YES	58.42 [2.300]	23	5-640620-3
YES	55.88 [2.200]	22	5-640620-2
YES	53.34 [2.100]	21	5-640620-1
YES	50.80 [2.000]	20	5-640620-0
YES	48.26 [1.900]	19	4-640620-9
YES	45.72 [1.800]	18	4-640620-8
YES	43.18 [1.700]	17	4-640620-7
YES	40.64 [1.600]	16	4-640620-6
YES	38.10 [1.500]	15	4-640620-5
YES	35.56 [1.400]	14	4-640620-4
YES	33.02 [1.300]	13	4-640620-3
YES	30.48 [1.200]	12	4-640620-2
YES	27.94 [1.100]	11	4-640620-1
YES	25.40 [1.000]	10	4-640620-0
YES	22.86 [.900]	9	3-640620-9
YES	20.32 [.800]	8	3-640620-8
YES	17.78 [.700]	7	3-640620-7
YES	15.24 [.600]	6	3-640620-6
YES	12.70 [.500]	5	3-640620-5
YES	10.16 [.400]	4	3-640620-4
YES	7.62 [.300]	3	3-640620-3
YES	5.08 [.200]	2	3-640620-2
NO	71.12 [2.800]	28	2-640620-8
NO	68.58 [2.700]	27	2-640620-7
NO	66.04 [2.600]	26	2-640620-6
NO	63.50 [2.500]	25	2-640620-5
NO	60.96 [2.400]	24	2-640620-4
NO	58.42 [2.300]	23	2-640620-3
NO	55.88 [2.200]	22	2-640620-2
NO	53.34 [2.100]	21	2-640620-1
NO	50.80 [2.000]	20	2-640620-0
NO	48.26 [1.900]	19	1-640620-9
NO	45.72 [1.800]	18	1-640620-8
NO	43.18 [1.700]	17	1-640620-7
NO	40.64 [1.600]	16	1-640620-6
NO	38.10 [1.500]	15	1-640620-5
NO	35.56 [1.400]	14	1-640620-4
NO	33.02 [1.300]	13	1-640620-3
NO	30.48 [1.200]	12	1-640620-2
NO	27.94 [1.100]	11	1-640620-1
NO	25.40 [1.000]	10	1-640620-0
NO	22.86 [.900]	9	640620-9
NO	20.32 [.800]	8	640620-8
NO	17.78 [.700]	7	640620-7
NO	15.24 [.600]	6	640620-6
NO	12.70 [.500]	5	640620-5
NO	10.16 [.400]	4	640620-4
NO	7.62 [.300]	3	640620-3
NO	5.08 [.200]	2	640620-2
LEADFREE	DIM A	NO. OF CIRCUITS	PART NO.

1 MATERIAL: CONNECTOR - NYLON UL94V-2 (RED).
 CONTACTS - 0.30 [.012] THICK COPPER ALLOY
 BRIGHT TIN-LEAD .00203 [.000080] MIN THICKNESS
 FOR 640620-2 THRU 2-640620-8.
 BRIGHT TIN .00305 [.000120] MIN THICKNESS
 FOR 3-640620-2 THRU 5-640620-8.

- 2. CONTACTS ACCEPT 22 AWG WIRE WITH 1.52 [.060] MAX INSULATION DIAMETER.
- 3. CONTACTS MUST ACCEPT 0.64 ± 0.03 [.025] POST AND REMAIN LOCKED IN POSITION.
- 4 IDENTIFICATION NUMBER FOR LAST CIRCUIT MAY NOT APPEAR ON ALL ASSEMBLIES.
- 5. DIMENSIONS IN BRACKETS ARE IN INCHES.
- 6. HOUSING FEATURES ARE: FEED THRU WITH LOCKING RAMP.

METRIC

THIS DRAWING IS A CONTROLLED DOCUMENT.		DWN S. CARPENTER 11JUN2003	Tyco Electronics Corporation Harrisburg, PA 17105	
DIMENSIONS: INCHES		CHK D. BOSSI 11JUN2003	NAME D. BOSSI 11JUN2003	
TOLERANCES UNLESS OTHERWISE SPECIFIED: 0 PLC ± 1 PLC ± 2 PLC ± 3 PLC ± 0.13 [.005] 4 PLC ± ANGLES ± FINISH 1		PRODUCT SPEC 108-1050		RESTRICTED TO -
MATERIAL 1		APPLICATION SPEC 114-1019		SIZE A2
		WEIGHT		CAGE CODE 00779
		CUSTOMER DRAWING		DRAWING NO C=640620
		SCALE 5:1		SHEET 1 OF 1
				REV P

A/C BUSINESS GROUP 3323 177-34 'NICK GANNON'

640620

A