

Dual Channel

T-41-85

General Purpose

Part Number	Features	Current Transfer Ratio I _F = 10mA MIN (%)	Isolation B'kdown Voltage V DC	Continuous Forward Current MAX (mA)	PIV LED @ 10 μA MIN (V)	BVCEO @ 1mA MIN (V)	ICEO (Dark) VCE = 10V MAX (nA)	VCE Sat I _F = 16mA I _C = 2mA MAX (V)	Package
ISD-1	Two Isolators in one Package Independently Isolated from each other	20	2500	60	3.0	30	50	0.5 (I _C = 1.6mA)	21
ISD-5		50							
ISD-74		12.5 (I _F = 16mA)	1500						
MCT 6 §		20	2500						

High Voltage, High CTR, High Sensitivity

§ Replacement for ILCT6.

Part Number	Features	Current Transfer Ratio I _F = 10mA MIN MAX (%)	Current Transfer Ratio I _F = 1.0mA MIN (%)	Isolation B'kdown Voltage V DC	Continuous Forward Current MAX (mA)	PIV LED @ 10 μA MIN (V)	BVCEO @ 1mA MIN (V)	ICEO (Dark) VCE = 10V MAX (nA)	VCE Sat I _F = 10mA I _C = 2mA MAX (V)	Package
ISD 201	Two Isolators in one Package Independently Isolated from each other	75 min.	10	5000	60	3.0	30	50	0.4	21
ISD202		125-250	30							
ISD203		225-450	50							

Quad Channel**General Purpose**

Part Number	Features	Current Transfer Ratio I _F = 10mA MIN (%)	Isolation B'kdown Voltage V DC	Continuous Forward Current MAX (mA)	PIV LED @ 10 μA MIN (V)	BVCEO @ 1mA MIN (V)	ICEO (Dark) VCE = 10V MAX (nA)	VCE Sat I _F = 16mA I _C = 1.6mA MAX (V)	Package
ISQ1	Four Isolators in one Package Independently Isolated from each other	20	2500	60	3.0	30	50	0.5	22
ISQ5		50							
ISQ74		12.5 (I _F = 16mA)	1500						

High Voltage, High CTR, High Sensitivity

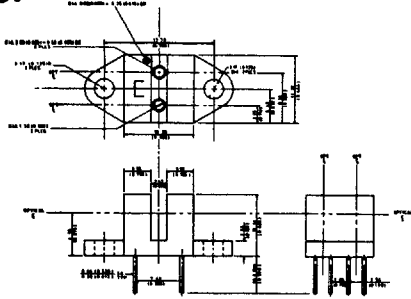
Part Number	Features	Current Transfer Ratio I _F = 10mA MIN MAX (%)	Current Transfer Ratio I _F = 1mA VCE = 10V MIN (%)	Isolation B'kdown Voltage V DC	Continuous Forward Current MAX (mA)	PIV LED @ 10 μA MIN (V)	BVCEO @ 1mA MIN (V)	ICEO (Dark) VCE = 10V MAX (nA)	VCE Sat I _F = 10mA I _C = 2mA MAX (V)	Package
ISQ201	Four Isolators in one Package Independently Isolated from each other	75 min.	10	5000	60	3.0	30	50	0.4	22
ISQ202		125-250	30							
ISQ203		225-450	50							

Photo Darlington**With Base Connection**

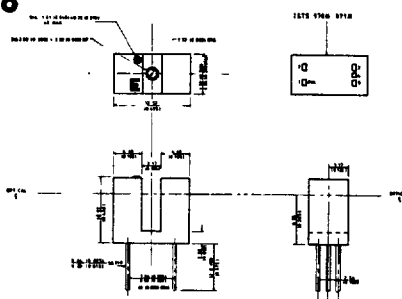
Part Number	Features	Current Transfer Ratio I _F = 10mA MIN (%)	Isolation B'kdown Voltage V DC	Continuous Forward Current MAX (mA)	PIV LED @ 10 μA MIN (V)	BVCEO @ 1mA MIN (V)	ICEO (Dark) VCE = 10V MAX (nA)	VCE Sat I _F = 8mA I _C = 2mA MAX (V)	Package
4N29	Optically Coupled Pair with Infrared Emitter and Photo Darlington Transistor	100	2500	60	3.0 (@ 100 μA)	30	100	1.0	23
4N30			1500						
4N31		50						1.0	
4N32		500	2500						
4N33			1500						
H11B1		500 (I _F = 1mA)	2500					3.0	
MCA2-55*	100	3550	55	1.0 [I _F = 50mA I _C = 50mA]					
H24B1	Optically Coupled Pair with internal distance between Emitter and Detector of 4mm min. Housed in a 4 pin plastic package without base connection "G" denotes lead spread tp 10mm.	1000 (I _F = 5mA)	5300	60	3.0	30	100	1.0	4
H24B2		400 (I _F = 5mA)	(Peak)						
IS2100		1000 (I _F = 5mA)	11000						
IS2060		600 (I _F = 5mA)							
IS2040		400 (I _F = 5mA)	(Peak)						
IS2100G		1000	11000						
IS2060G		600 (I _F = 5mA)							
IS2040G	400	(Peak)							

* REPLACEMENT FOR ILCA 2-55

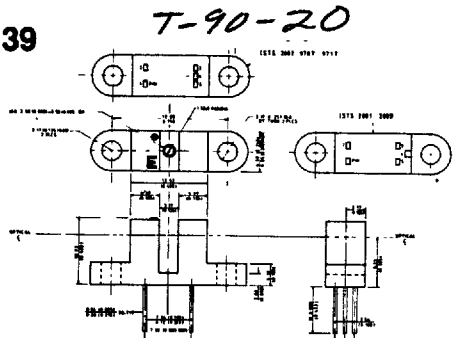
37



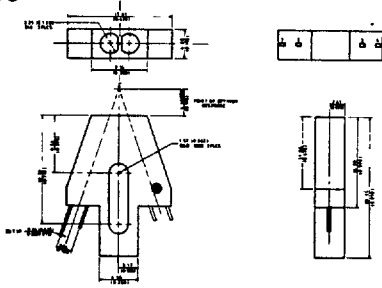
38



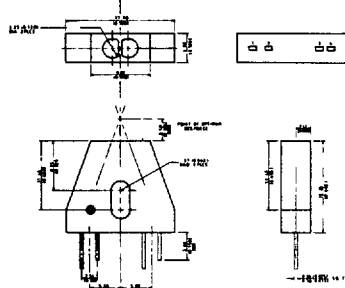
39



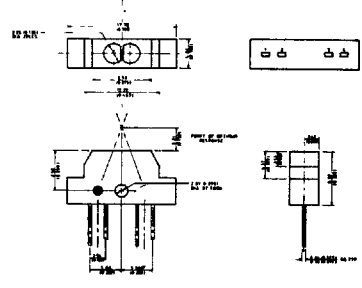
40



41



42



SCHEMATICS

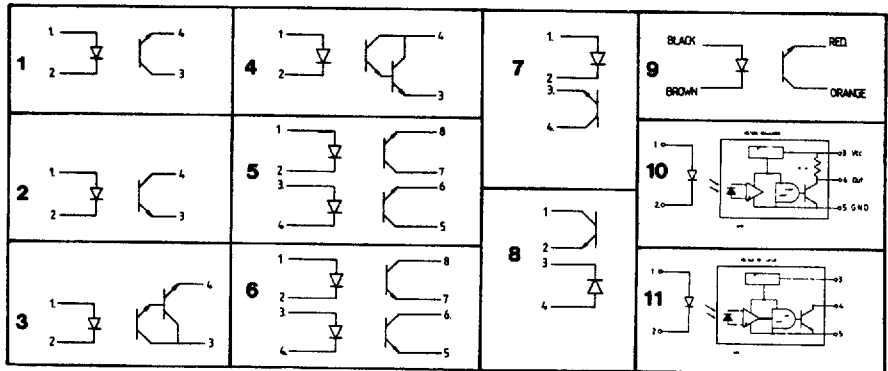
NOTES COVERING SWITCHES

Lead Spacing – the standard interruptor switches are available with two standard lead spacings:

- 1. 0.320 (8.13)
- 0.290 (7.37)

- 2. 0.230 (5.84)
- 0.210 (5.33)

Housing material – Polycarbonate



ALPHANUMERIC INDEX

Part	Page	Part	Page	Part	Page	Part	Page	Part	Page
4N25	5	H11D4	5	IS1050G	2	ISD-5	6	ISTS823A	9
4N26	5	H11F1	3	IS1020	2	ISD-74	6	ISTS824A	9
4N27	5	H11F2	3	IS1020G	2	ISD201	6	ISTS832S	9
4N28	5	H11G1	7	IS1100	2	ISD202	6	ISTS832SD	9
4N29	6	H11G2	7	IS1100G	2	ISD203	6	ISTS870A/B	8
4N30	6	H11G3	7	IS201	5	ISPD60	7	ISTS871A/B	8
4N31	6	H11J1	2	IS202	5	ISPD61	7	ISTS875A/B	8
4N32	6	H11J2	2	IS203	5	ISPD62	7	ISTS876A/B	8
4N33	6	H11J3	2	IS204	5	ISPD63	7	ISTS904	8
4N35	5	H11J4	2	IS205	3	ISPD64	7	ISTS970TN	10
4N36	5	H11J5	2	IS206	3	ISPD65	7	ISTS971TN	10
4N37	5	H11L1	3	IS2040	6	ISQ1	6	MCA2-55	6
4N38	5	H11L2	3	IS2040G	6	ISQ201	6	MCS2400	4
4N38A	5	H21A1	8	IS2060	6	ISQ202	6	MCT 2	4
4N39	4	H21A2	8	IS2060G	6	ISQ203	6	MCT 2E	4
4N40	4	H21B1	10	IS2100	6	ISQ5	6	MCT 6	6
4N45	4	H21B2	10	IS2100G	6	ISQ74	6	MOC3009	2
4N46	4	H21B3	10	IS3020	2	ISTS100	8	MOC3010	2
6N135	3	H22A1	8	IS3021	2	ISTS101	8	MOC3011	2
6N136	3	H22A2	8	IS604	4	ISTS149	10	MOC3030	2
6N137	3	H22B1	10	IS605	4	ISTS150	9	MOC3031	2
6N138	4	H22B2	10	IS606	4	ISTS151	9	MOC3032	2
6N139	4	H22B3	10	IS607	2	ISTS200	8	MOC3040	2
CNY17-1	5	H24A1	2	IS608	2	ISTS2001	10	MOC3041	2
CNY17-2	5	H24A2	2	IS609	3	ISTS2002	10	MOC3042	2
CNY17-3	5	H24B1	6	IS610	3	ISTS2003	10	MOC8050	7
CNY17-4	5	H24B2	6	IS611	3	ISTS201	8	SFH600-0	5
CNY17-5	5	ICPL2502	3	IS620	2	ISTS250	9	SFH600-1	5
CNY30	4	ICPL2503	3	IS621	2	ISTS251	9	SFH600-2	5
CNY34	4	ICPL2530	3	IS622	2	ISTS300	9	SFH600-3	5
CNY35	4	ICPL2531	3	IS623	2	ISTS301	9	SFH600-4	5
H11AA1	4	ICPL2533	3	IS654A	7	ISTS400	9	SFH601-1	5
H11AV1	2	ICPL2601	3	IS655A	7	ISTS401	9	SFH601-2	5
H11AV2	2	ICPL2630	3	IS656A	7	ISTS703A	10	SFH601-3	5
H11AV3	2	ICPL2631	3	IS657A	7	ISTS708	10	SFH601-4	5
H11B1	6	ICPL2730	4	IS657B	7	ISTS804	8	SFH601-5	5
H11C4	4	ICPL2731	4	IS658A	7	ISTS805	8	SFH609-1	5
H11C5	4	ICPL3700	3	IS659	7	ISTS813S3	9	SFH609-2	5
H11C6	4	IS-1	4	IS660	7	ISTS813S5	9	SFH609-3	5
H11D1	5	IS-5	4	IS661	7	ISTS813S7	9	TIL 111	4
H11D2	5	IS-74	4	IS662	7	ISTS822S	9	TIL119	7
H11D3	5	IS1050	2	ISD-1	6	ISTS822SD	9		

All information contained within this catalogue is believed to be accurate and reliable. However, Isocom Components Ltd. and its affiliates can accept no liability for any errors or omissions, and reserve the right to change specifications without notice.

45E D 4886510 000244 J ISO

ISOCOM COMPONENTS LTD