

REVISION BD

UNLESS OTHERWISE NOTED TOLERANCES ARE:  
 DIMENSIONS ARE IN INCHES ONE PLACE DECIMALS ± .1 [2.54mm] THREE PLACE DECIMALS ± .005 [0.13mm] ANGLES ± 5°  
 TWO PLACE DECIMALS ± .01 [0.25mm] FOUR PLACE DECIMALS ± .0020 [0.05mm]

TITLE: HIGH TEMP 2mm TERMINAL STRIP (BOARD STACKING)  
 DWG NO: TW-XX-XX-X-X-XXX-XXX-XXX-XX SHEET 1 OF 3

LEAD STYLE	TERMINAL	OVERALL LENGTH 'L'	
		INCHES	MILLIMETERS
-01	T-1S13-20-X-2	.3228	8.2 mm
-02	T-1S13-02-X-2	.3770	9.6 mm
-03	T-1S13-03-X-2	.5347	13.6 mm
-04	T-1S13-06-X-2	.5550	14.1 mm
-05	T-1S13-09-X-2	.5940	15.1 mm
-06	T-1S13-10-X-2	.6730	17.10 mm
-07	T-1S13-11-X-2	.7510	19.10 mm
-08	T-1S13-12-X-2	.8300	21.10 mm
-09	T-1S13-13-X-2	.4560	11.60 mm
-10	T-1S13-14-X-2	.6140	15.60 mm
-11	T-1S13-05-X-2	.3970	10.08 mm
-12	T-1S13-16-X-2	1.110	28.19 mm

NOTE: LEAD STYLE -08 & -12 NOT AVAILABLE IN -T, -Q-5 & 6 ROW OPTION.

TW-XX-XX-X-X-XXX-XXX-XXX-XX

No. OF POSITIONS EXPRESSED IN # OF POS. -01 THRU -50  
 "XX" = No. OF POS. X .07874 [2.00]

LEAD STYLE (SEE TABLE 1) (SEE \*NOTE)

PLATING  
 -G: GOLD, 20 Au / 50 Ni MIN ON CONTACT, 3 Au / 50 Ni MIN ON TAIL  
 -T: MATTE TIN CONTACT AND TAIL  
 -S: SELECTIVE, 30 Au / 50 Ni MIN ON CONTACT, MATTE TIN TAIL  
 -L: LIGHT SELECTIVE, 15 Au / 50 Ni MIN ON CONTACT, MATTE TIN TAIL  
 -TL: TIN/LEAD (90/10+/-5%) CONTACT AND TAIL  
 -F: FLASH SELECTIVE, 3 Au / 50 Ni MIN ON CONTACT, MATTE TIN TAIL  
 -H: HEAVY GOLD, 30 Au / 50 Ni MIN ON CONTACT, 3 Au / 50 Ni MIN ON TAIL  
 -STL: SELECTIVE, 30 Au / 50 Ni MIN ON CONTACT, TIN/LEAD (90/10+/-5%) TAIL (-08 & -12 LEAD STYLES ONLY)  
 -TM: MATTE TIN CONTACT AND TAIL  
 -LM: LIGHT SELECTIVE, 15 Au / 50 Ni MIN ON CONTACT, MATTE TIN TAIL  
 -FM: FLASH SELECTIVE, 3 Au / 50 Ni MIN ON CONTACT, MATTE TIN TAIL  
 -SM: SELECTIVE, 30 Au / 50 Ni MIN ON CONTACT, MATTE TIN TAIL

OPTION  
 \*\* -MW: METAL WASHER (NOT AVAILABLE IN -12 LEAD STYLE) (NOT AVAILABLE FOR -S VERSION) (SEE FIG. 2, SHT. 3) (.090 [2.29] MIN TAIL) (.300 [7.62] MAX TAIL ONLY FOR -T & -TL OPTIONS.) (ALL -MW OPTIONS ARE TO BE TUBED)

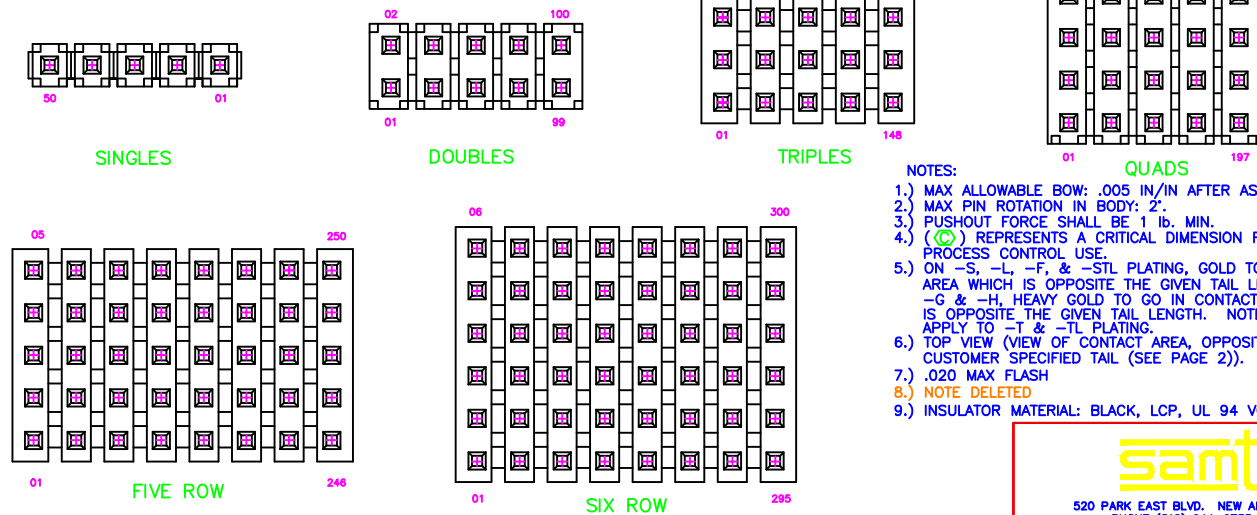
POLARIZATION OPTION  
 SPECIFY POS. TO BE REMOVED (SEE FIGURE 1)

TAIL LENGTH

SPACE OPTION  
 -S, -D, -Q: (.120 MIN.)  
 -T, -5, -6: (.160 MIN.)  
 MAX = 1" - .050

ROW OPTION  
 -S: SINGLE (USE BODY TMM-50-S)  
 -D: DOUBLE (USE BODY TMM-50-D) (.120-.1599 BOARD SPACE) (ABOVE .160 MIN USE BODY TMMC-50-D) (CAN SUB TMMH-50-D OR TMMH-50-D-LC FOR TMMC-50-D)  
 -T: TRIPLE ( USE BODY TMMH-50-T)  
 -Q: QUAD (USE BODY TMM-50-Q)  
 -5: FIVE ROW (USE BODY TMMH-50-5)  
 -6: SIX ROW (USE BODY TMMH-50-6)

FIG. 1  
 SCALE: .75x  
 (SEE NOTE 6)



\*\* - MW OPTION, DO NOT DESIGN IN. SAMTEC WILL ONLY SUPPORT EXISTING BUSINESS 2/07/02.

- NOTES:
- 1.) MAX ALLOWABLE BOW: .005 IN/IN AFTER ASSEMBLY.
  - 2.) MAX PIN ROTATION IN BODY: 2°.
  - 3.) PUSHOUT FORCE SHALL BE 1 lb. MIN.
  - 4.) (⊕) REPRESENTS A CRITICAL DIMENSION FOR STATISTICAL PROCESS CONTROL USE.
  - 5.) ON -S, -L, -F, & -STL PLATING, GOLD TO GO IN CONTACT AREA WHICH IS OPPOSITE THE GIVEN TAIL LENGTH. FOR -G & -H, HEAVY GOLD TO GO IN CONTACT AREA WHICH IS OPPOSITE THE GIVEN TAIL LENGTH. NOTE DOES NOT APPLY TO -T & -TL PLATING.
  - 6.) TOP VIEW (VIEW OF CONTACT AREA, OPPOSITE VIEW OF CUSTOMER SPECIFIED TAIL (SEE PAGE 2)).
  - 7.) .020 MAX FLASH
  - 8.) NOTE DELETED
  - 9.) INSULATOR MATERIAL: BLACK, LCP, UL 94 VO

**PROPRIETARY NOTE**  
 THIS DOCUMENT CONTAINS INFORMATION CONFIDENTIAL AND PROPRIETARY TO SAMTEC INC. AND SHALL NOT BE REPRODUCED OR TRANSMITTED IN ANY FORM OR BY ANY MEANS, ELECTRONIC OR MECHANICAL, INCLUDING PHOTOCOPYING, RECORDING, OR BY ANY INFORMATION STORAGE AND RETRIEVAL SYSTEM, WITHOUT THE EXPRESS WRITTEN CONSENT OF SAMTEC INC.

EMISPROD\ASSEMBLY\2MM TW-ASM

**samtec**

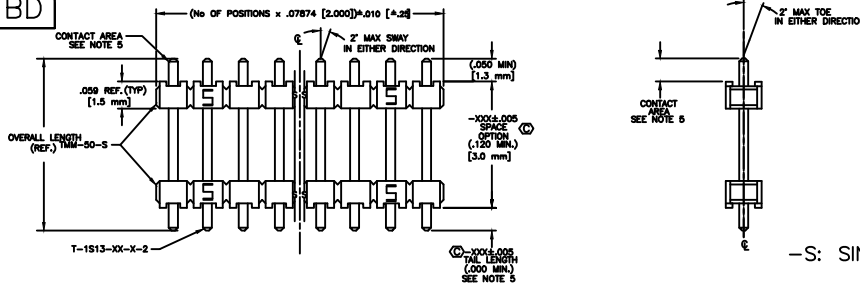
520 PARK EAST BLVD. NEW ALBANY, INDIANA 47150  
 PHONE (812) 944-6733 P.O. BOX 1147  
 CODE 55322

MADE BY: MATT CARTER 6-19-98

TW-XX-XX-X-X-XXX-XXX-XXX-XX SHEET 1 OF 3

FIG. 1

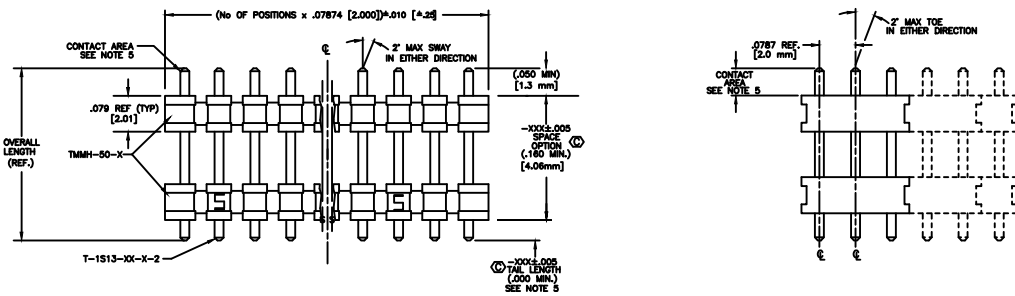
REV. BD



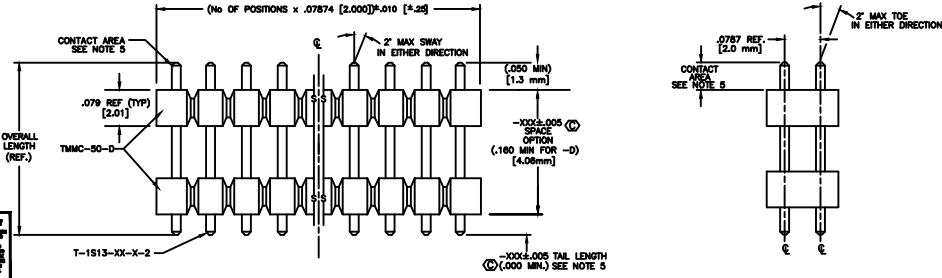
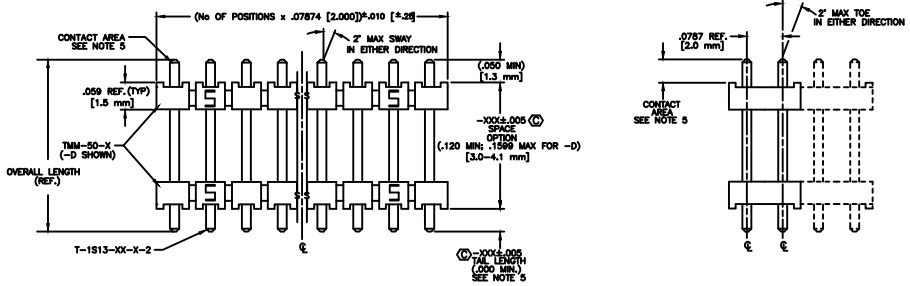
-S: SINGLES

DESIGNER AND IN CHARGE	DATE ENGINEERING CHECKED	DATE DRAWING REV.	TITLE: HIGH TEMP 2mm TERMINAL STRIP (BOARD STACKING)	DWG NO: TII-XX-XX-XX-XX-XX-XX SHEET 2 OF 3
ONE PLACE DECIMALS ± .031mm	THREE PLACE DECIMALS ± .0013mm	ANGLES ± 5'		
TWO PLACE DECIMALS ± .0127mm	FOUR PLACE DECIMALS ± .00025mm			

-T: TRIPLE  
-5: FIVE ROW  
-6: SIX ROW



-D: DOUBLE  
-Q: QUAD



**IMPORTANT NOTE**  
THIS DRAWING IS THE PROPERTY OF SAMTEC CORPORATION. IT IS TO BE USED ONLY FOR THE PURPOSE AND QUANTITY SPECIFIED IN THE ORDER. IT IS NOT TO BE REPRODUCED OR TRANSMITTED IN ANY FORM OR BY ANY MEANS, ELECTRONIC OR MECHANICAL, INCLUDING PHOTOCOPYING, RECORDING, OR BY ANY INFORMATION STORAGE AND RETRIEVAL SYSTEM, WITHOUT THE WRITTEN PERMISSION OF SAMTEC CORPORATION.

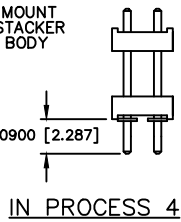
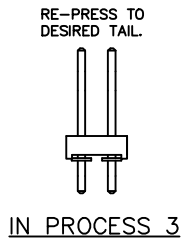
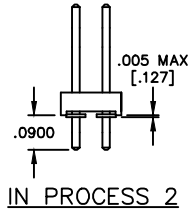
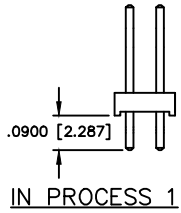
PLUG HOLES 1-11

**samtec**  
EXDPROD/ASSEMBLY/3MM  
TII-AS2

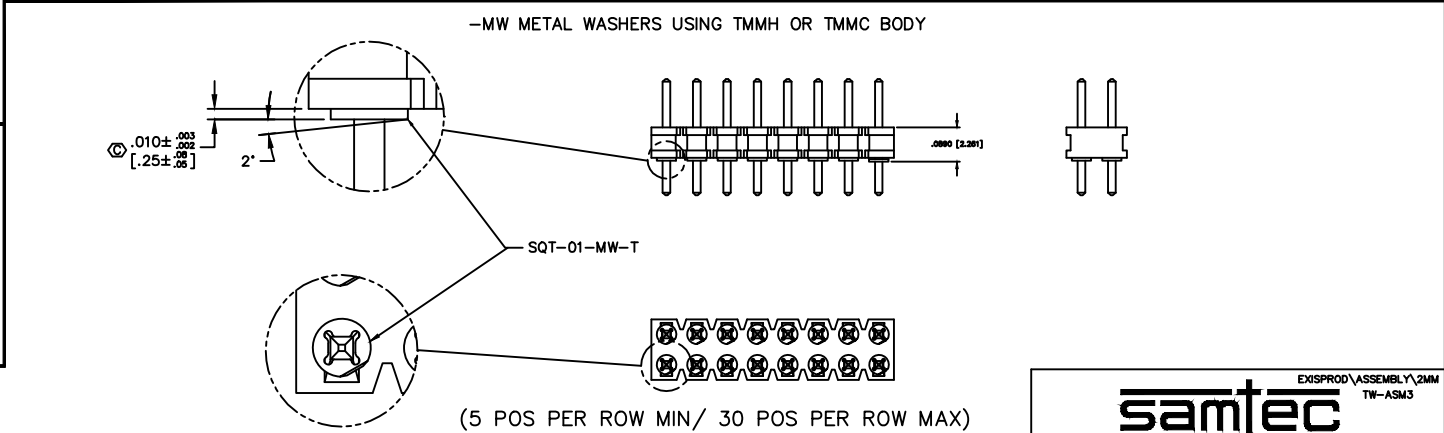
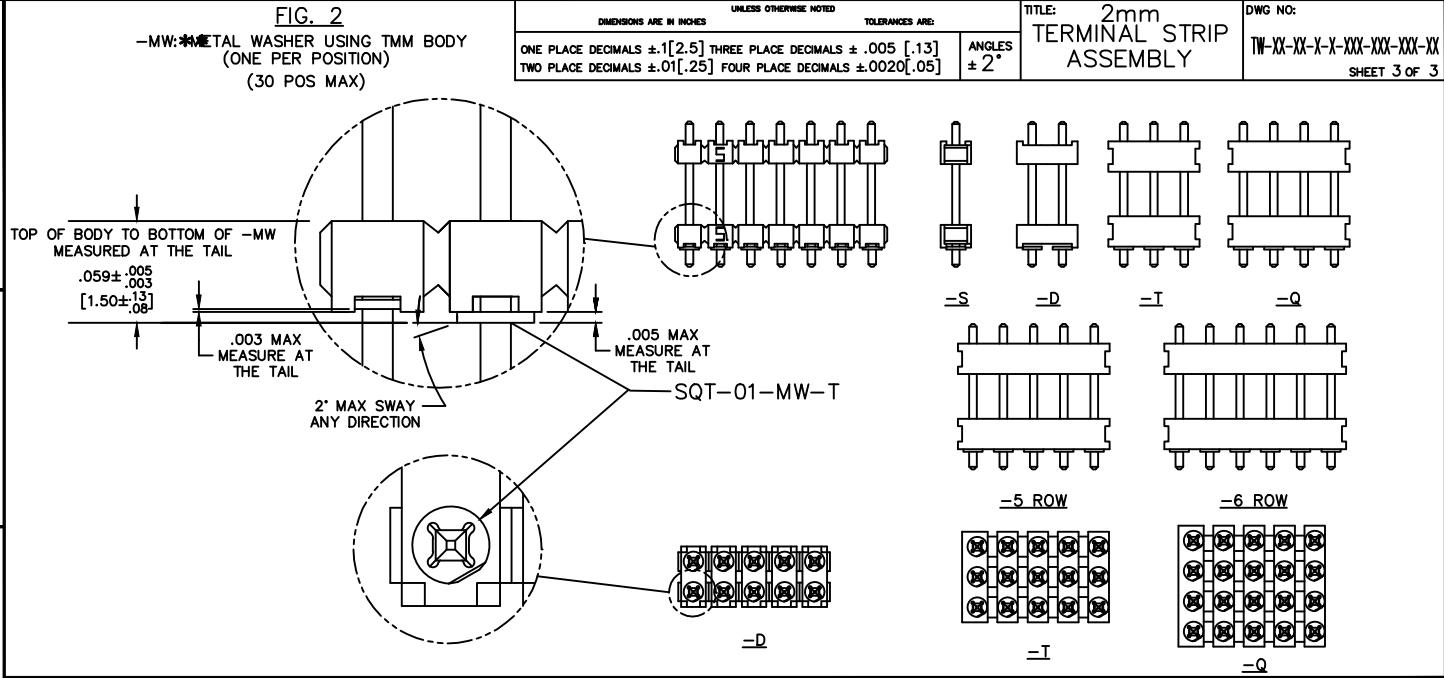
500 PARK EAST BLVD. NEW ALBANY, INDIANA 47150  
PHONE (317) 944-8725 FAX (317) 944-1147  
CODE 0322

MADE IN U.S.A. © WATT CARTER 6-10-98 TII-XX-XX-XX-XX-XX SHEET 2 OF 3

REV. BD



**PROPRIETARY NOTE**  
 THIS DOCUMENT CONTAINS INFORMATION CONFIDENTIAL AND PROPRIETARY TO SAMTEC INC. AND SHALL NOT BE REPRODUCED OR TRANSMITTED TO OTHER DOCUMENTS OR DISCLOSED TO OTHERS OR USED FOR ANY PURPOSE OTHER THAN THAT FOR WHICH IT WAS OBTAINED WITHOUT THE EXPRESS WRITTEN CONSENT OF SAMTEC INC.



**\*\* - MW OPTION, DO NOT DESIGN IN. SAMTEC WILL ONLY SUPPORT EXISTING BUSINESS 2/07/02.**

EXISPROD\ASSEMBLY\2MM  
 TW-ASM3

**samtec**

520 PARK EAST BLVD. NEW ALBANY, INDIANA 47150  
 PHONE (812) 944-6733 P.O. BOX 1147  
 CODE 55322

MADE BY: REIDINGER 11-2-90  
 TW-XX-XX-X-X-XXX-XXX-XX  
 SHEET 3 OF 3