

| MAXIMUM RATINGS PER DIODE | | | |
|---|--------|-------------|-------|
| PARAMETER | SYMBOL | | UNITS |
| WORKING PEAK REVERSE VOLTAGE | VRRM | 100 | V |
| AVERAGE FORWARD CURRENT | IF(AV) | 70 | A |
| PEAK ONE CYCLE NON-REPETITIVE SURGE CURRENT | IFSM | 600 | A |
| PEAK REPETITIVE REVERSE CURRENT | IRRM | 1.0 | A |
| OPERATING JUNCTION TEMPERATURE RANGE | TJ | -65 TO +175 | °C |
| STORAGE TEMPERATURE RANGE | Tstg | -55 TO +150 | °C |
| THERMAL RESISTANCE JUNCTION TO CASE | RθJc | 1.0 | °C/W |

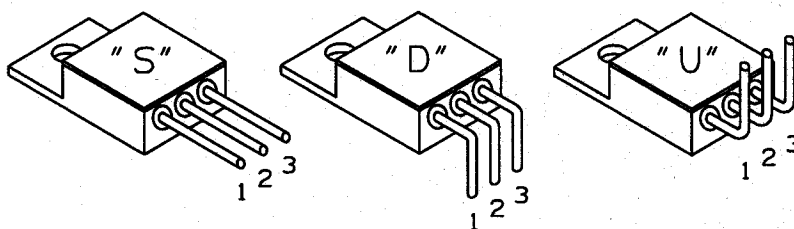
100V, 60A, 1.15V

SDR60100 JAA
SDR60100 JAB

FEATURES

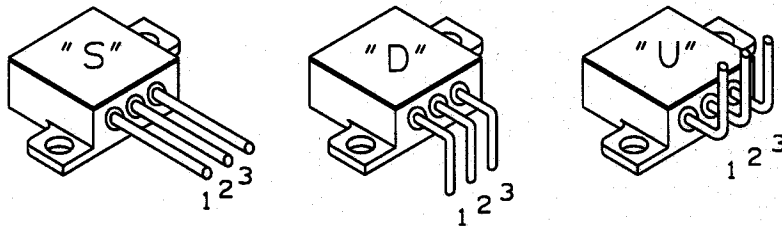
- RUGGED PACKAGE
- HI-REL CONSTRUCTION
- CERAMIC EYELETS
- LEAD BENDING OPTIONS
- COPPER CORED 52 ALLOY PINS
- LOW IR LOSSES
- LOW THERMAL RESISTANCE
- OPTIONAL MIL-S-19500 SCREENING

STANDARD BEND CONFIGURATIONS JAA



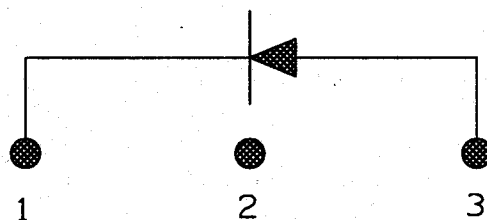
(CUSTOM BEND OPTIONS AVAILABLE)

STANDARD BEND CONFIGURATIONS JAB



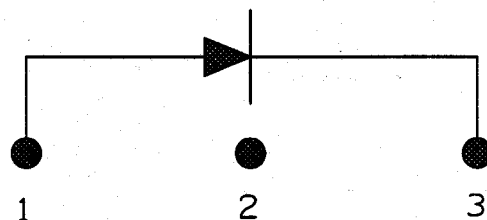
(CUSTOM BEND OPTIONS AVAILABLE)

"J" SCHEMATIC



TERMINAL CONNECTIONS
1 = CATHODE
2 = NO CONN.
3 = ANODE
CASE = NO CONNECTION

"N" SCHEMATIC



TERMINAL CONNECTIONS
1 = ANODE
2 = NO CONN.
3 = CATHODE
CASE = NO CONNECTION

| ELECTRICAL CHARACTERISTICS T _c = 25°C (UNLESS OTHERWISE SPECIFIED) | | | | | |
|---|-----------------|--|-------------------------|------|-------|
| PARAMETER | SYMBOL | TEST CONDITIONS | | | UNITS |
| MAX. PEAK FORWARD VOLTAGE ① | V _F | T _J = 25°C | I _F = 60A | 1.15 | V |
| MAX. PEAK REVERSE CURRENT ① | I _{RM} | T _J = 25°C | V _{RWM} = 100V | 20 | μA |
| | | T _J = 125°C | | 45 | mA |
| CAPACITANCE | C _f | T _c = 25°C, f = 100KHZ TO 1 MHZ | V _R = 5VDC | 1800 | Pf |

(1) PULSE TEST: PULSE WIDTH 300μS, DUTY CYCLE 2%.