

SPECIFICATIONS

VGA Connector

Mechanical

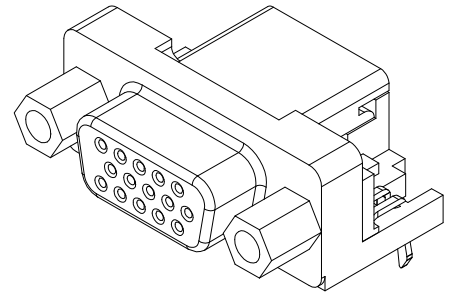
Contact Retention Force: 1.82kg (4.04Lb) min.
Contact Engagement Force: 0.34kg (0.75Lb) max.
Contact Separation Force: 0.021kg (0.05Lb) min.
Durability: 500 Cycles

Electrical

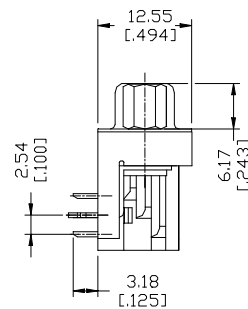
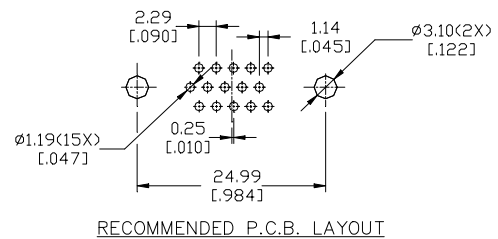
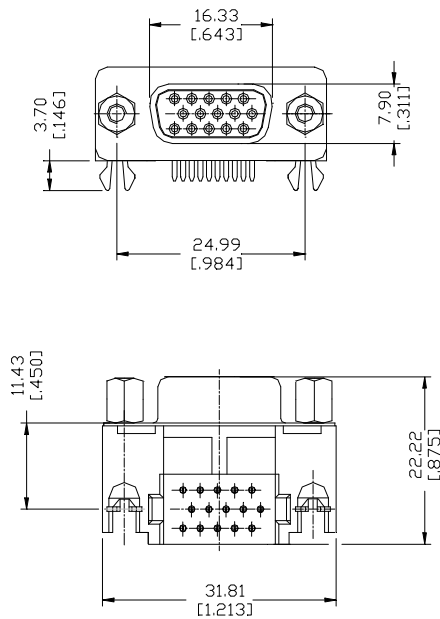
Current Rating: 2A
Contact Resistance: 25mW max.
Dielectric Withstanding Voltage: 1000V AC/1min min.
Insulation Resistance: 5000MW min.

Physical

Housing: Thermoplastic, UL 94V-0 rated in Black Color
Contact: Copper alloy
Plating: See "ORDERING INFORMATION"
Operating Temperature: -55 to +105
Recommended Thickness of PCB: 1.57[.062]



DRAWING



ORDERING INFORMATION

PRODUCT NO.: DV 1 1 2 0 7 - H4R5 - 4F

VGA Series _____

Body Type _____

1=Right Angle PCB Mount

Termination Type _____

1=Female

NO. of Pos. _____

2= 15 Pos.

Body Length _____

0=8.89mm

Lead Free Part Number

Extension Code

Contact Area Plating

7= 15u"Gold Plating