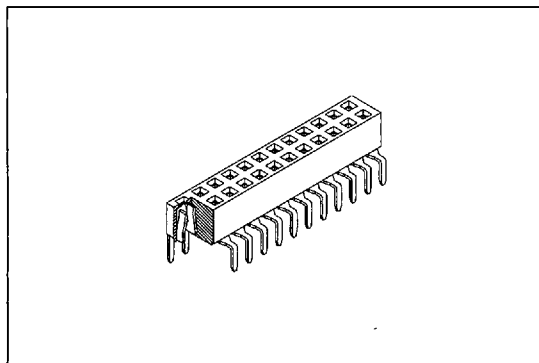


2148 SERIES

P.C.B. SOCKET

2.00mm X 2.00mm (0.079" X 0.079")



Features:

- * Bottom entry, Pass through or Top Entry.
- * Low profile 4.30mm (0.169").
- * Choice of two different foot print..
- * Mates with 0.5mm (0.02") sq. pin

Mates with: 2111,2112,2113,2114,2115.

Material:

Housing: High temperature housing withstands IR and VPR soldering methods.

Contacts: Phosphor Bronze.

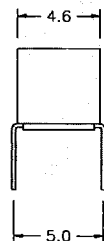
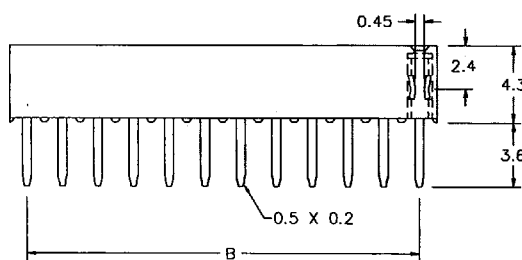
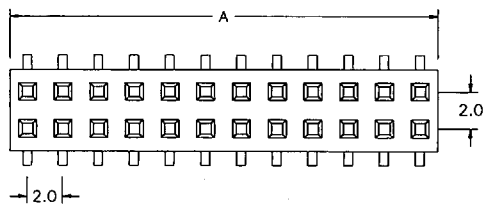
Plating: Gold plated: 5 μ " over 50 μ " nickel.
 Tin plated: 150 μ " over 70 μ " nickel.
 Selective gold plated: Standard gold on mating area and tin plated on solder tail.

Electrical Characteristics:

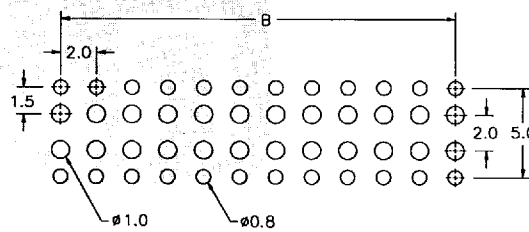
Current Rating: 1 AMP
 Insulator Resistance: 5000M Ω min. at DC 500V
 Contact Resistance: 20m Ω max. at DC 100mA
 Operating Temperature: -55°C ~ +105°C

Mechanical Characteristics:

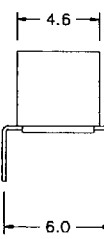
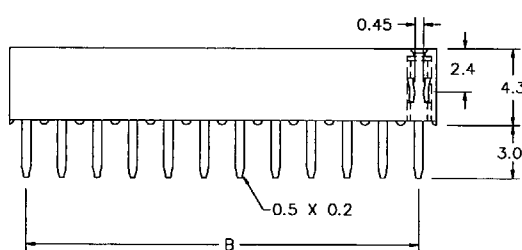
Insertion Force: 128g avg.(0.50mm sq. pin)
 Withdrawal Force: 85g avg.(0.50mm sq. pin)



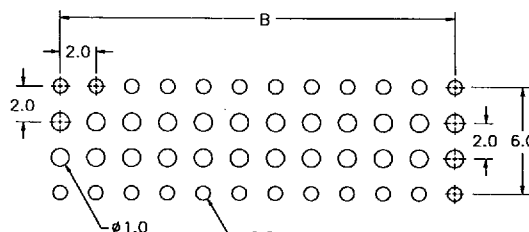
Type A



P.C. Board Layout



Type B



P.C. Board Layout

Position	6 Thru 80
Dimension	
A	2.0 X No. of Positions +0.4
B	2.0 X No. of Positions -2.0

Ordering information

2148-2 X

30

G

A

Series Double Row

No. of

G: Gold Plated

A: 2.0mm X 5.0mm

Pin Per Row

T: Tin Plated

B: 2.0mm X 6.0mm

C: Selective Gold Plated