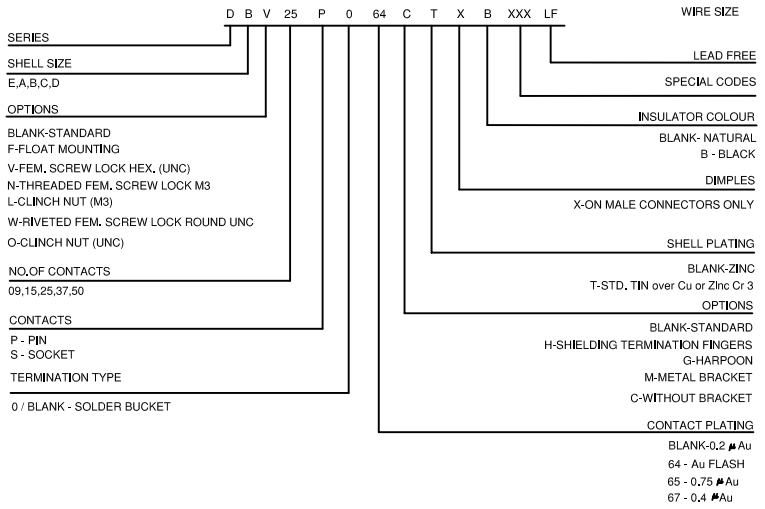


Part No. & Date code printing

**TECHNICAL SPECIFICATIONS**

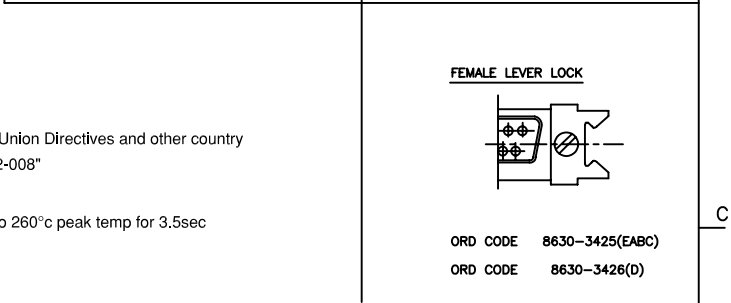
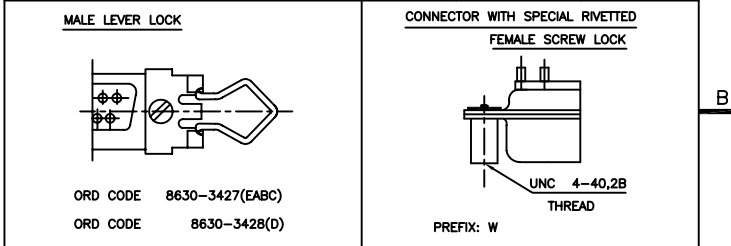
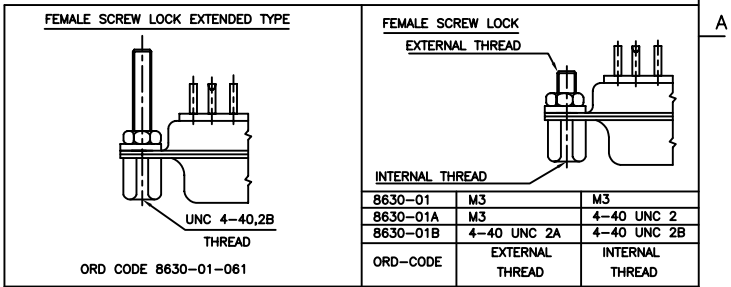
- SHELLS : TIN/CADMIUM/ZINC PLATED STEEL
- INSULATOR MATERIAL : SELF EXTINGUISHING THERMOPLASTIC TO UL CLASS 94 V0
- THE HOUSING WILL WITHSTAND EXPOSURE TO 260-265°C
- IF WE USE PROTECTIVE ADHESIVE (type Kapton or Teflon)
- OR PROTECTIVE METALLIC DEVICE
- CONTACTS DIA ON ACTIVE AREA : Ø1 MM,
- CONTACTS MATERIAL : COPPER ALLOY
- CONTACT PLATING : GOLD OVER NICKEL (ACTIVE ZONE)
- TINLEAD OVER NICKEL (TERMINATION ZONE)
- FOR LEAD FREE PLATING : 2 µMIN.MATTE TIN TOP OVER
- 1.27µMIN.NICKEL UNDER PLATE(ON TERMINATION ZONE)
- OPERATING TEMPERATURE : -55°C +125°C
- OPERATING CURRENT : 5 A PER CONTACT
- CONTACT RESISTANCE : ≤10m Ω
- INSULATION RESISTANCE : ≥5000M Ω
- MAXIMUM VOLTAGE : 1000 V<sub>r.m.s</sub>
- MECHANICAL ENDURANCE : 200 MATINGS.
- DAMP HEAT : 21 DAYS.
- WIRE SIZE : 0.6 MM<sup>2</sup> (AWG 20) MAX.

**ORDERING INFORMATION**



50	P	66.65	52.68	61.11	11.08	14.99	11.09	5.85	55.07	13.31	1.50	1.0
	S	66.65	52.30	61.11	10.62	14.99	11.21	6.05	55.07	13.31	1.10	0.8
37	P	68.94	55.30	63.50	8.23	12.17	11.09	5.85	57.45	10.46	1.50	1.0
	S	68.94	54.71	63.50	7.77	12.17	11.21	6.05	57.45	10.46	1.10	0.8
25	P	52.65	38.84	47.04	8.23	12.17	11.07	5.85	41.02	10.46	1.10	0.8
	S	52.65	38.25	47.04	7.77	12.17	11.21	6.05	41.02	10.46	1.10	0.8
15	P	38.76	25.12	33.32	8.23	12.17	10.99	5.85	27.25	10.46	1.10	0.8
	S	38.76	24.54	33.32	7.77	12.17	11.21	6.05	27.25	10.46	1.10	0.8
09	P	30.43	16.79	24.99	8.23	12.17	10.99	5.85	19.02	10.46	1.10	0.8
	S	30.43	16.21	24.99	7.77	12.17	11.21	6.05	19.02	10.46	1.10	0.8
SHELL SIZE	A	+0,76	+0,25	±0,12	+0,25	+0,76	F MAX	+0,15	+0,51	+0,51	±0,2	+0,22
	O				D	E		G	H	J	K	L

NOTE:- INSIDE DIMENSIONS OF THE MALE AND OUTSIDE DIMENSIONS OF THE FEMALE CONNECTOR



"This LF product meets European Union Directives and other country regulations as described in GS-22-008"  
Packaging as per GS-14-920  
Housing will withstand exposure to 260°C peak temp for 3.5sec

mat'l. code		SEE NOTE 4		surface	tolerance	projection	product family	
ISO 1302		ISO 406 ISO 1101		tolerances unless otherwise specified		D-SUB		
ltr	ecn no	dr	date	angles	linear	title		
F	106-0074	GVJ	2006-06-08	.00±0.1		D- SUB SOLDER BUCKET CONNECTOR		
G	107-0088	RKV	2007-07-14	.000±.00X		(WITH ASSEMBLY OPTIONS)		
H	107-0175	MRA	2007-12-17	0°±1°		dwg no		
sheet index		revision sheet	H	dr	enr	sheet 1 of 1		
		1		GEORGE.V.JOSEPH	1999-03-20	size		
				enr	1999-03-20	A3		
				chr	2007-07-14	C-DSUB-0064		
				appd	2007-07-14	type Product Customer Drawing		



Copyright FCI