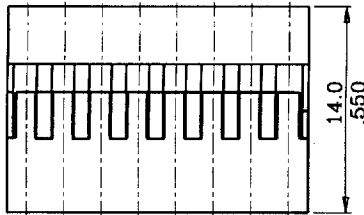
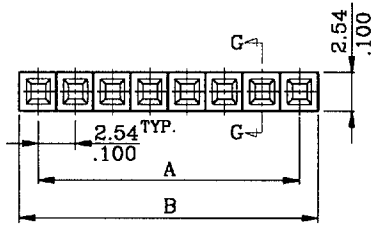


# 2665 Series 2.54mm(.100") Crimp Type Socket



Unit :  $\frac{\text{mm}}{\text{inch}}$



SECTION G-G

## Ordering Information:

2665S 40 0000  
1 2 3

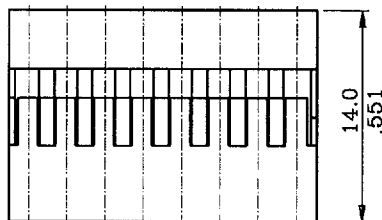
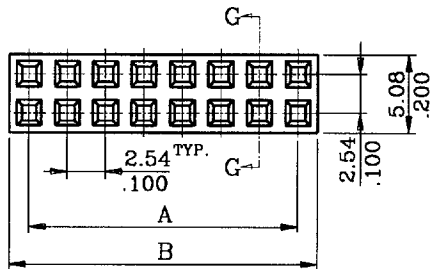
1. Series No.
2. No. of circuits
3. Special options

A = 2.54mm \* No. of spaces  
B = A + 2.54mm

# 2655 Series 2.54mm(.100") Dual Row Crimp Type Socket



Unit :  $\frac{\text{mm}}{\text{inch}}$



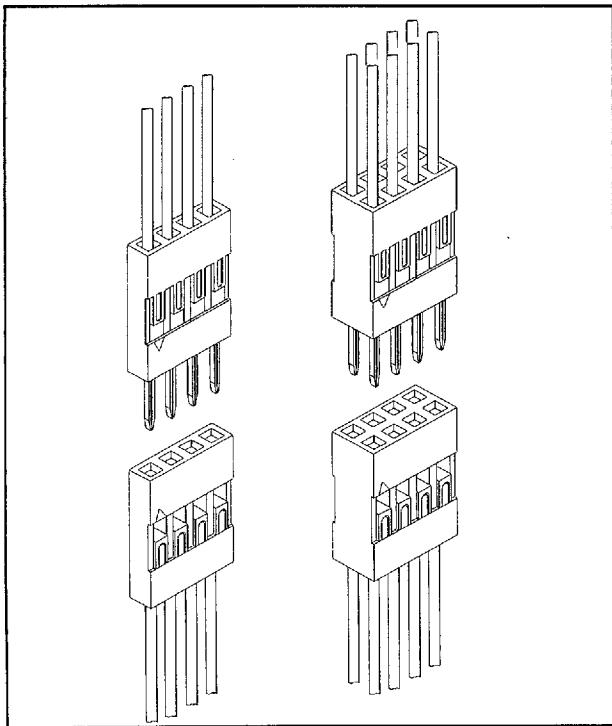
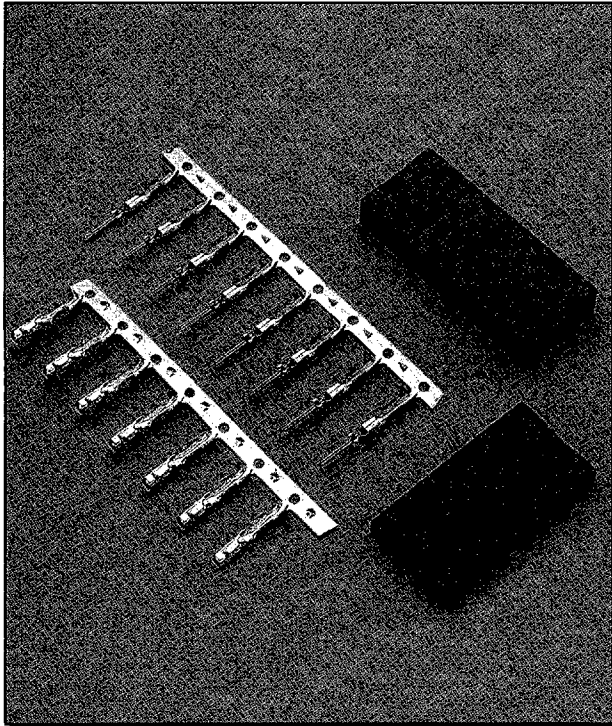
SECTION G-G

## Ordering Information:

2655S 72 0000  
1 2 3

1. Series No.
2. No. of circuits
3. Special options

A = 2.54mm \* No. of spaces  
B = A + 2.54mm



## Features

- ◆ 2655 and 2665 Housing:
  - 2655 Available in 4 through 72 circuits
  - 2665 Available in 2 through 40 circuits
  - Can be used Leoco 6001 Polarizing Key
  - Glass filled Nylon 6/6 UL94V-2
  - Color: Black
  - Accepts Leoco 2653,2663 crimp terminal
  - 2655 Mates with Leoco 2558,2559,2568,2569 and 2666 header
  - 2665 Mates with Leoco 2556,2557,2566 and 2567 header
- ◆ 2653 Terminal:
  - Twin leaf box shaped terminal
  - Use in Leoco 2655 and 2665 socket
  - Mates with 0.64mm(.025") square pin
  - Tin or selective gold plated
  - Material: Phosphor bronze
- ◆ 2663 Terminal:
  - Use in Leoco 2655 and 2665 socket
  - Mates with Leoco 2653 crimp terminal
  - Material: Pre-tinned copper alloy

## Specifications

- ◆ Current rating: 3A DC,AC
- ◆ Voltage rating: 250V DC,AC
- ◆ Temperature rating: -25°C ~ +105°C
- ◆ Contact resistance:
  - Initial:20mΩ max.
  - After environmental test:40mΩ max.
- ◆ Insulation resistance:
  - Initial:1,000MΩ min.
  - After humidity and thermal shock test:500MΩ min.
- ◆ Withstanding voltage: 1,000V AC /minute
- ◆ Applicable wire: AWG 22 to 28
- ◆ Applicable PC board thickness: 1.6mm

## Standards

Recognized No. E82349