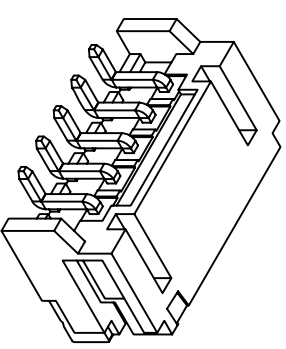
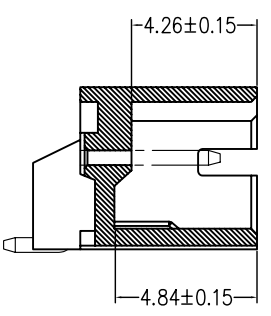
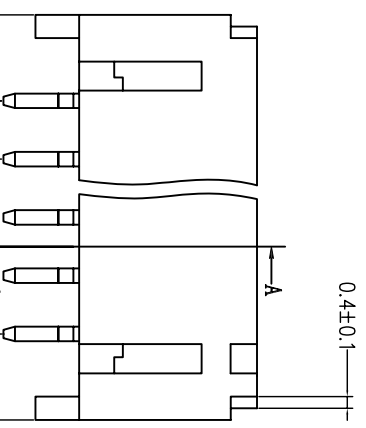
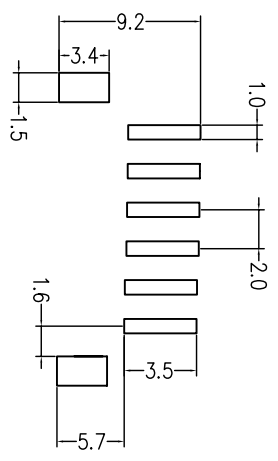
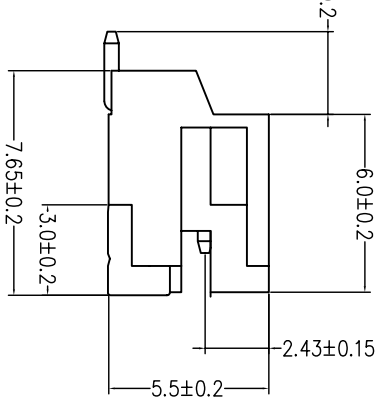
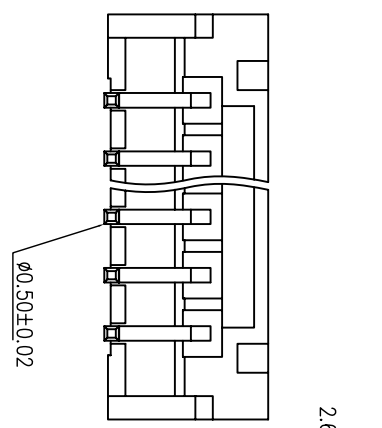


REV.	DESCRIPTION	DATE



剖視圖 A-A

- Note:**
Material:
 1. Housing: Nylon-6T, UL94V-0.
 2. Terminal: Copper alloy, Tin-plated.
- Electrical:**
 1. Current rating: 2A AC,DC
 2. Voltage: 100V AC,DC
 3. Contact resistance: 30mΩ Max
 4. Insulation resistance: 1000MΩ Min
 5. Withstanding voltage: 800V AC/min.
 6. Temperature: -25°C ~ +85°C



PCB Hole Layout

Circuits	Part No	Dimension mm	
		A	B
02	WTB-P20R-SMT-02	2.0	8.0
03	WTB-P20R-SMT-03	4.0	10.0
04	WTB-P20R-SMT-04	6.0	12.0
05	WTB-P20R-SMT-05	8.0	14.0
06	WTB-P20R-SMT-06	10.0	16.0
07	WTB-P20R-SMT-07	12.0	18.0
08	WTB-P20R-SMT-08	14.0	20.0
09	WTB-P20R-SMT-09	16.0	22.0
10	WTB-P20R-SMT-10	18.0	24.0
11	WTB-P20R-SMT-11	20.0	26.0
12	WTB-P20R-SMT-12	22.0	28.0
13	WTB-P20R-SMT-13	24.0	30.0
14	WTB-P20R-SMT-14	26.0	32.0
15	WTB-P20R-SMT-15	28.0	34.0
16	WTB-P20R-SMT-16	30.0	36.0

DRAWER <i>Chiu Chiu Siu</i>		TOLERANCE X ±.20 XX ±.15 XXX ±.10	
CHECK <i>Shi Jung Siu</i>		UNITS : mm	
DESIGNED <i>Chiu Chiu Siu</i>		SCALE FREE	
APPROVAL <i>Shiu Teng Siu</i>		DATE 12 / 10 / 2010	
NAME 2.0mm Pin Water 90° SMT type Ø=0.50		PART NO. WTB-P20R-SMT-XX	
DRAWING NO. WTB-P20R-SMT		SHEET 1 OF 1	
REV.		A	

SynLight 日亮電子科技有限公司
Sun-light Electronic Technologies Inc.