

RoHS COMPLIANT

Material:

Contact: brass

Insulator material : PA46 UL 94V-0

Applicable PC board thickness :1.6mm

* Plating : Matte tin plated 80µ ” min over 30µ ”
min. nickel overall

A=2.0*No.of circuit/2-2.0

B=2.0*No.of circuits/2+1.9

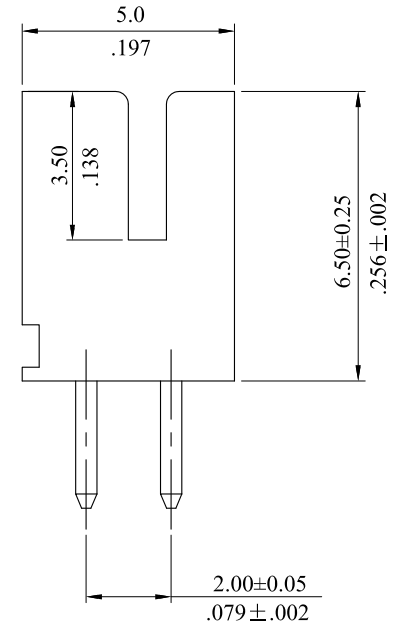
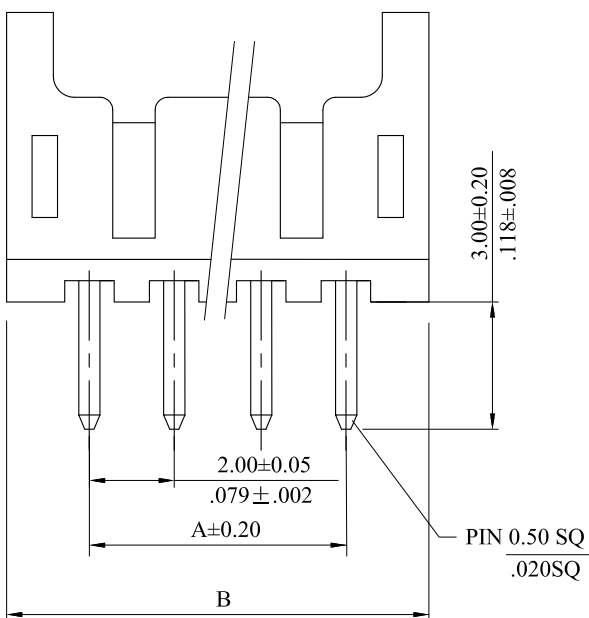
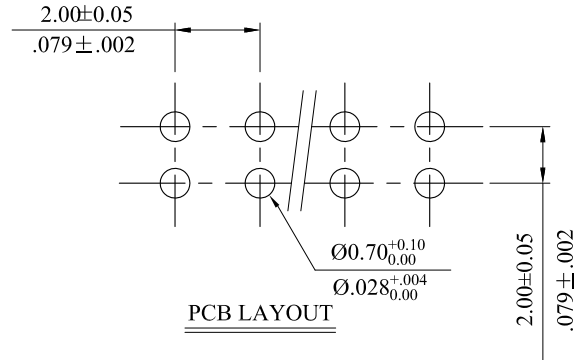
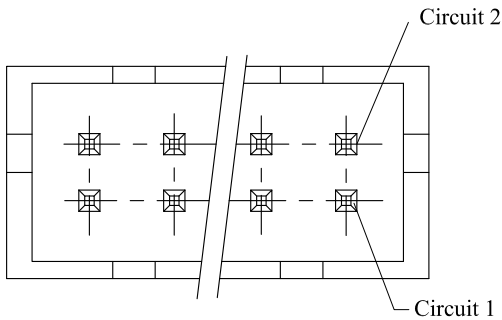
2020P**V0T*
1 2

1. No. of circuits

2. Color

1=Black 3=Red 5=Yellow 7=Blue 0=Natural

POLES	DIMENSION.	
	A	B
4	2.00(.079)	5.90±0.20(.232±.008)
6	4.00(.157)	7.90±0.20(.311±.008)
8	6.00(.236)	9.90±0.20(.390±.008)
10	8.00(.315)	11.90±0.20(.469±.008)
12	10.00(.394)	13.90±0.25(.547±.010)
14	12.00(.472)	15.90±0.25(.626±.010)
16	14.00(.551)	17.90±0.25(.705±.010)
18	16.00(.630)	19.90±0.25(.783±.010)
20	18.00(.709)	21.90±0.25(.862±.010)
22	20.00(.787)	23.90±0.25(.941±.010)
24	22.00(.866)	25.90±0.25(1.020±.010)
26	24.00(.945)	27.90±0.25(1.098±.010)
28	26.00(1.024)	29.90±0.25(1.177±.010)
30	28.00(1.102)	31.9±0.30(1.256±.012)
32	30.00(1.181)	33.9±0.30(1.335±.012)
34	32.00(1.260)	35.9±0.30(1.413±.012)



				LEOCO CORPORATION	APPROVED: BRADY	PART NO.: 2020P**V0T*				
					GENERAL TOLERANCES: (UNLESS SPECIFIED)	DATE:	TITLE: 2.00mm PITCH 180°WAFER			
C	ES111207				CHECKED: CHARD	DRAWING NO.: 202008S				
B	ES110629				DATE:					
A	DWG REL				DRAWN: SAM					
REV.	ECO. NO.	CHG.	APP.		DATE: 12.01.12					
				mm	inch	UNITS	SCALE	SIZE	SHEET	REV.
				1 PLACE ± 0.30 ± --	± --	mm	5:1	A4	1/1	C
				2 PLACES ± 0.20 ± .012	± .012	inch				
				3 PLACES ± 0.10 ± .008	± .008					
				4 PLACES ± -- ± .004	± .004					
				ANGULAR ± (1°)						